

FOR SALE

2500 FOLSOM RD EXECUTIVE SUMMARY

GAUT · WHITTENBURG · EMERSON

Commercial Real Estate



OFFERING SUMMARY

Sale Price: \$452,400

Building Size: 4,524 SF

Year Built: 2010

Lot Size: 22,651 SF

Zoning: GR - General Retail

PROPERTY OVERVIEW

This property, previously used as a daycare and then an event center, is suitable for a range of uses. The building includes a kitchen with a vent hood and the potential for a grease trap system, ADA-compliant restrooms, and a fire suppression system. The property also has a fenced yard and parking in the front, providing functionality for various purposes. Its layout and location outside the city's loop make it suitable for commercial or community uses.

LOCATION OVERVIEW

Located just north of Highway 60 on Folsom Road, this property offers an accessible location outside the city's loop, away from the activity of Amarillo's urban core. It is minutes from I-40, Rick Husband Amarillo International Airport, the Amazon distribution center, the new Buc-ee's location, and Route 66 Motor Speedway. The property provides proximity to key destinations without being in the center of the city.

SHERIL BLACKBURN | sheril@gwamarillo.com | 806.373.3111

Gaut Whittenburg Emerson Commercial Real Estate

600 S. Tyler | Amarillo, TX 79101 | 806.373.3111

GWAMARILLO.COM

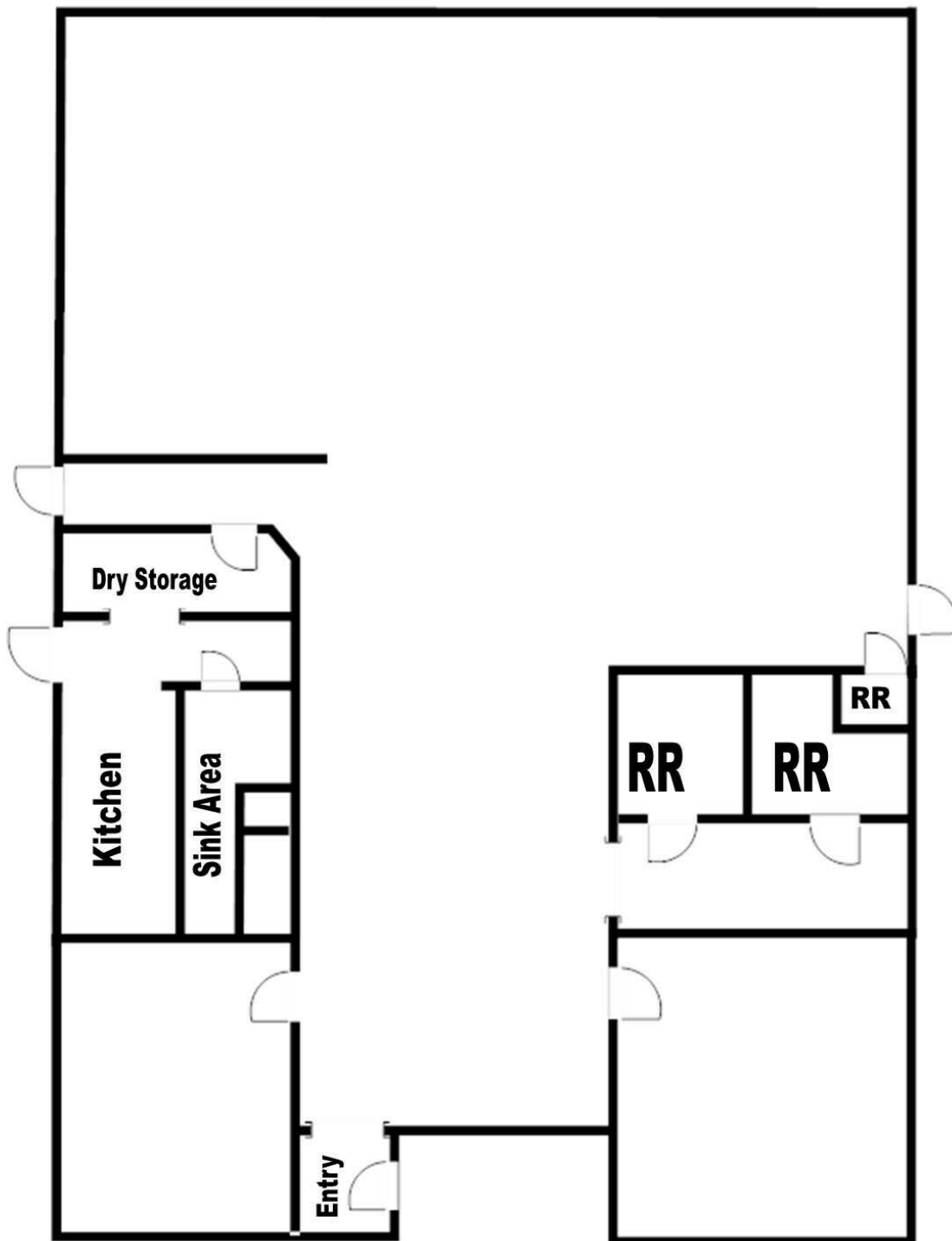
This information has been secured from sources we believe to be reliable, but we make no representation or warranties, expressed or implied, as to the accuracy of the information. References to measurements are approximate. Buyer must verify the information and bears all risks for inaccuracies.

FOR SALE

2500 FOLSOM RD
FLOOR PLAN

GAUT·WHITTENBURG·EMERSON

Commercial Real Estate



SHERIL BLACKBURN | sheril@gwamarillo.com | 806.373.3111

Gaut Whittenburg Emerson Commercial Real Estate

600 S. Tyler | Amarillo, TX 79101 | 806.373.3111

GWAMARILLO.COM

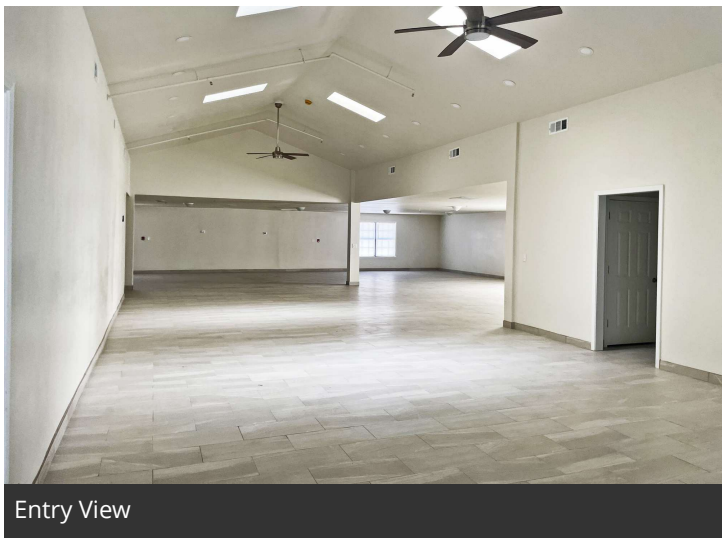
This information has been secured from sources we believe to be reliable, but we make no representation or warranties, expressed or implied, as to the accuracy of the information. References to measurements are approximate. Buyer must verify the information and bears all risks for inaccuracies.

FOR SALE

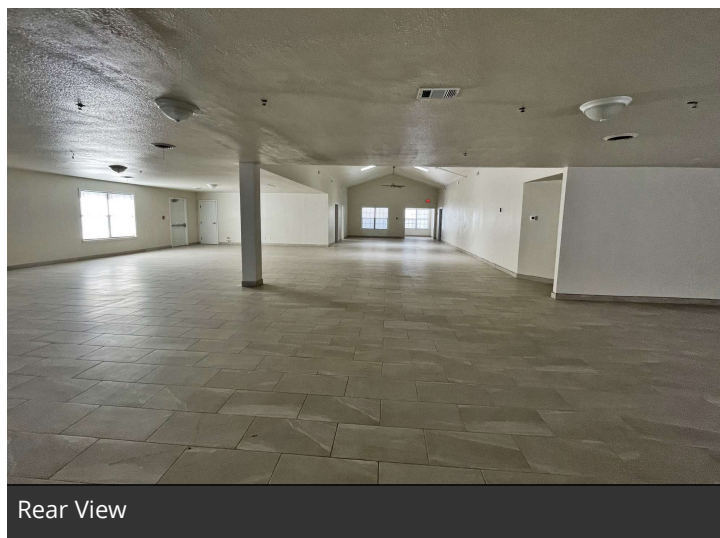
2500 FOLSOM RD
ADDITIONAL PHOTOS

GAUT·WHITTENBURG·EMERSON

Commercial Real Estate



Entry View



Rear View



Front Room 1



Front Room 2

SHERIL BLACKBURN | sheril@gwamarillo.com | 806.373.3111

Gaut Whittenburg Emerson Commercial Real Estate

600 S. Tyler | Amarillo, TX 79101 | 806.373.3111

GWAMARILLO.COM

This information has been secured from sources we believe to be reliable, but we make no representation or warranties, expressed or implied, as to the accuracy of the information. References to measurements are approximate. Buyer must verify the information and bears all risks for inaccuracies.

FOR SALE

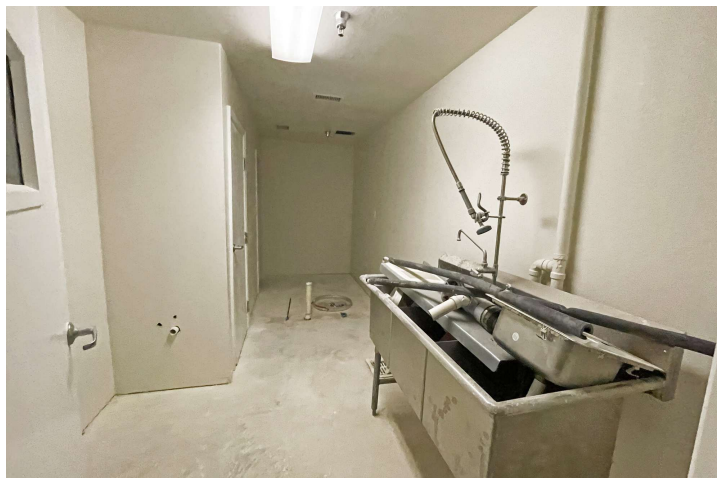
2500 FOLSOM RD
ADDITIONAL PHOTOS

GAUT·WHITTENBURG·EMERSON

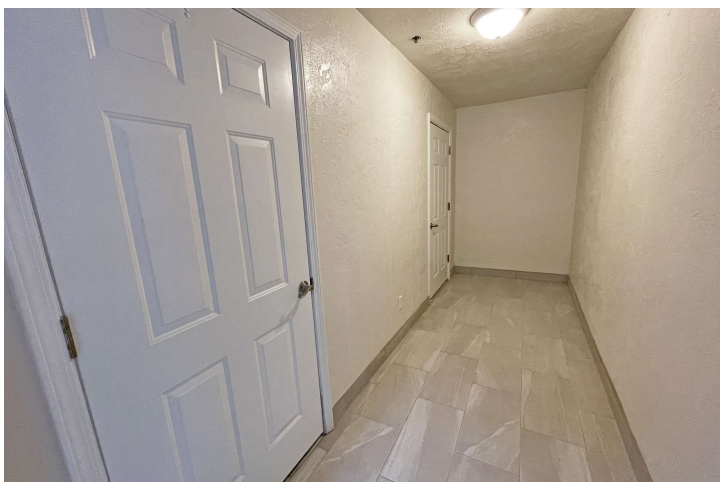
Commercial Real Estate



Kitchen



3 Compartment Sink Area



Restrooms



Fenced Side Yard

SHERIL BLACKBURN | sheril@gwamarillo.com | 806.373.3111

Gaut Whittenburg Emerson Commercial Real Estate

600 S. Tyler | Amarillo, TX 79101 | 806.373.3111

GWAMARILLO.COM

This information has been secured from sources we believe to be reliable, but we make no representation or warranties, expressed or implied, as to the accuracy of the information. References to measurements are approximate. Buyer must verify the information and bears all risks for inaccuracies.

FOR SALE

2500 FOLSOM RD RETAILER MAP

GAUT · WHITTENBURG · EMERSON

Commercial Real Estate



SHERIL BLACKBURN | sheril@gwamarillo.com | 806.373.3111

Gaut Whittenburg Emerson Commercial Real Estate
600 S. Tyler | Amarillo, TX 79101 | 806.373.3111

GWAMARILLO.COM

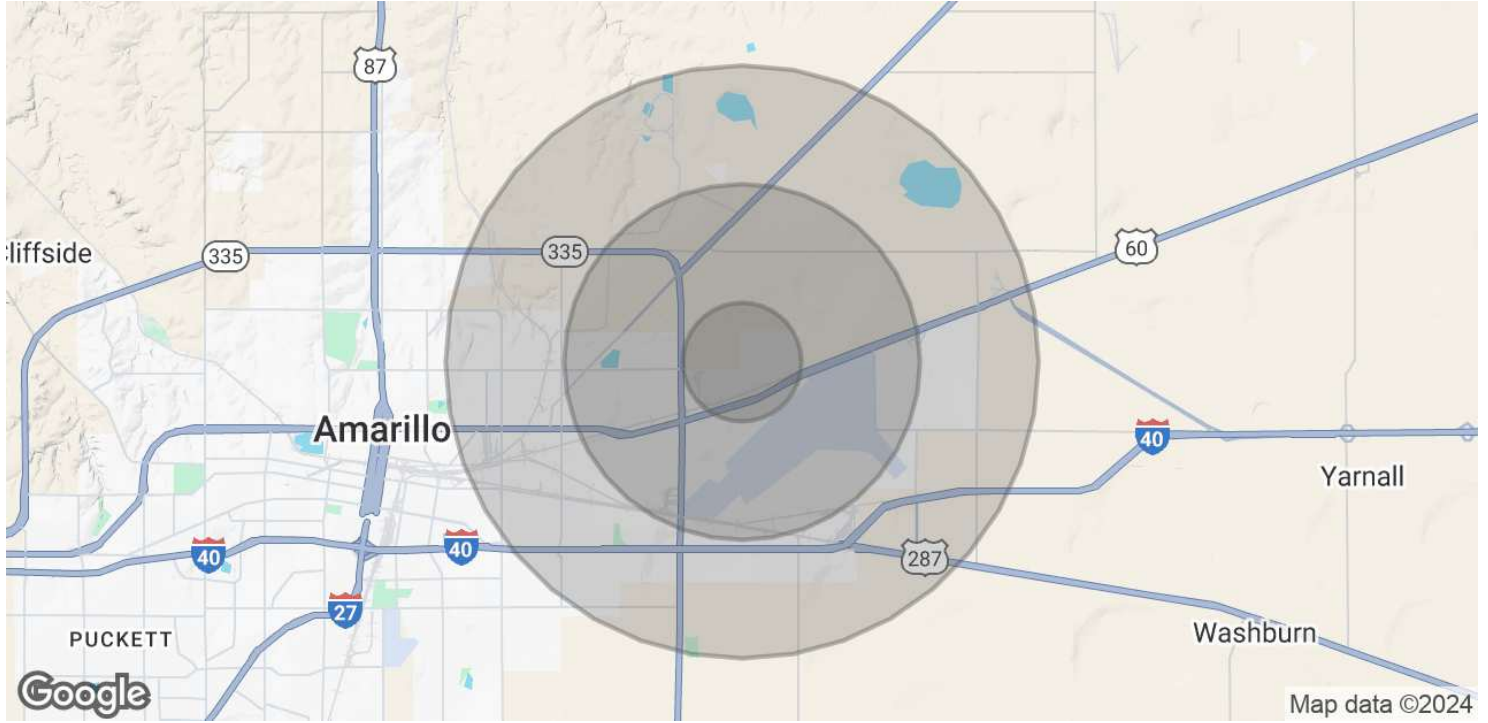
This information has been secured from sources we believe to be reliable, but we make no representation or warranties, expressed or implied, as to the accuracy of the information. References to measurements are approximate. Buyer must verify the information and bears all risks for inaccuracies.

FOR SALE

2500 FOLSOM RD DEMOGRAPHICS MAP & REPORT

GAUT · WHITTENBURG · EMERSON

Commercial Real Estate



POPULATION	1 MILE	3 MILES	5 MILES
Total Population	5,587	10,504	34,757
Average Age	42	39	36
Average Age (Male)	43	39	36
Average Age (Female)	39	37	36

HOUSEHOLDS & INCOME	1 MILE	3 MILES	5 MILES
Total Households	90	1,535	9,547
# of Persons per HH	62.1	6.8	3.6
Average HH Income	\$120,160	\$91,384	\$66,719
Average House Value	\$268,537	\$203,517	\$176,247

Demographics data derived from AlphaMap

SHERIL BLACKBURN | sheril@gwamarillo.com | 806.373.3111

Gaut Whittenburg Emerson Commercial Real Estate

600 S. Tyler | Amarillo, TX 79101 | 806.373.3111

GWAMARILLO.COM

This information has been secured from sources we believe to be reliable, but we make no representation or warranties, expressed or implied, as to the accuracy of the information. References to measurements are approximate. Buyer must verify the information and bears all risks for inaccuracies.



Information About Brokerage Services

Texas law requires all real estate licensees to give the following information about brokerage services to prospective buyers, tenants, sellers and landlords.

TYPES OF REAL ESTATE LICENSE HOLDERS:

- **A BROKER** is responsible for all brokerage activities, including acts performed by sales agents sponsored by the broker.
- **A SALES AGENT** must be sponsored by a broker and works with clients on behalf of the broker.

A BROKER'S MINIMUM DUTIES REQUIRED BY LAW (A client is the person or party that the broker represents):

- Put the interests of the client above all others, including the broker's own interests;
- Inform the client of any material information about the property or transaction received by the broker;
- Answer the client's questions and present any offer to or counter-offer from the client; and
- Treat all parties to a real estate transaction honestly and fairly.

A LICENSE HOLDER CAN REPRESENT A PARTY IN A REAL ESTATE TRANSACTION:

AS AGENT FOR OWNER (SELLER/LANDLORD): The broker becomes the property owner's agent through an agreement with the owner, usually in a written listing to sell or property management agreement. An owner's agent must perform the broker's minimum duties above and must inform the owner of any material information about the property or transaction known by the agent, including information disclosed to the agent or subagent by the buyer or buyer's agent.

AS AGENT FOR BUYER/TENANT: The broker becomes the buyer/tenant's agent by agreeing to represent the buyer, usually through a written representation agreement. A buyer's agent must perform the broker's minimum duties above and must inform the buyer of any material information about the property or transaction known by the agent, including information disclosed to the agent by the seller or seller's agent.

AS AGENT FOR BOTH - INTERMEDIARY: To act as an intermediary between the parties the broker must first obtain the written agreement of each party to the transaction. The written agreement must state who will pay the broker and, in conspicuous bold or underlined print, set forth the broker's obligations as an intermediary. A broker who acts as an intermediary:

- Must treat all parties to the transaction impartially and fairly;
- May, with the parties' written consent, appoint a different license holder associated with the broker to each party (owner and buyer) to communicate with, provide opinions and advice to, and carry out the instructions of each party to the transaction.
- Must not, unless specifically authorized in writing to do so by the party, disclose:
 - o that the owner will accept a price less than the written asking price;
 - o that the buyer/tenant will pay a price greater than the price submitted in a written offer; and
 - o any coincidental information or any other information that a party specifically instructs the broker in writing not to disclose, unless required to do so by law.

AS SUBAGENT: A license holder acts as a subagent when aiding a buyer in a transaction without an agreement to represent the buyer. A subagent can assist the buyer but does not represent the buyer and must place the interests of the owner first.

TO AVOID DISPUTES, ALL AGREEMENTS BETWEEN YOU AND A BROKER SHOULD BE IN WRITING AND CLEARLY ESTABLISH:

- The broker's duties and responsibilities to you, and your obligations under the representation agreement.
- Who will pay the broker for services provided to you, when payment will be made and how the payment will be calculated.

LICENSE HOLDER CONTACT INFORMATION: This notice is being provided for information purposes. It does not create an obligation for you to use the broker's services. Please acknowledge receipt of this notice below and retain a copy for your records.

GAUT WHITTENBURG EMERSON CRE	475878		(806)373-3111
Licensed Broker /Broker Firm Name or Primary Assumed Business Name	License No.	Email	Phone
Aaron Emerson, CCIM, SIOR	477647	aaron@gwamarillo.com	(806)373-3111
Designated Broker of Firm	License No.	Email	Phone
Aaron Emerson, CCIM, SIOR	477647	aaron@gwamarillo.com	(806)373-3111
Licensed Supervisor of Sales Agent/ Associate	License No.	Email	Phone
_____	_____	_____	_____
Sales Agent/Associate's Name	License No.	Email	Phone

Buyer/Tenant/Seller/Landlord Initials

Date

Regulated by the Texas Real Estate Commission

Information available at www.trec.texas.gov