

36

WEST 34TH STREET

BETWEEN 5TH & 6TH AVENUES

HERALD SQUARE | MIDTOWN



36

WEST 34TH STREET

BETWEEN 5TH & 6TH AVENUES


HERALD SQUARE | MIDTOWN

SIZE: 2,119 SF Ground Floor
2,019 SF Basement

FRONTAGE: 20'

POSSESSION: Arranged

ASKING RENT: Upon Request

TRANSPORTATION:  AMTRAK N TRANSIT Long Island Rail Road

HIGHLIGHTS:

- Prime QSR opportunity in the heart of Herald Square/Midtown
- Steps away from Empire State Building Observatory door
- High foot traffic area
- Blade signage potential
- 1/2 block from the Herald Square station which sees 21M riders annually
- Neighboring tenants include:
Chipotle, Starbucks, Foot Locker, Zara, Fossil, Aldo, Superdry, Zumiez, Lush, Pandora, UGG, H&M, Target, Macy's, Portabella, Timberland, Build a Bear, Bank of America, & many more!

MSG

LOS TACOS No. 1

PENN STATION

citibank

SEVENTH AVENUE

SBARRO **McDonald's** **FOREVER 21** **crocs**

OLD NAVY

kidsfoot Locker

VANS

KAY JEWELERS

SKECHERS FOOTWEAR

HOLLISTER

7-ELEVEN

TARGET

SEPHORA

Foot Locker

PANDORA

verizon

H&M

BANK OF AMERICA **HEYTEA**

SIXTH AVENUE

BROADWAY

UGG

Timberland

Build-A-Bear Workshop

TACOMBI

CHOPT

CHIRARDELLI

juice press

at&t

CHIPOTLE

Starbucks

THE EMPIRE STATE BUILDING

FIFTH AVENUE

WELLS FARGO

AÉROPOSTALE

CHOPT

NAYA

DUNKIN'

WEST 34TH STREET

MACYS

Capital One

ULTA BEAUTY

Levi's

STEVE MADDEN

ZARA

ALDO

Superdry

BANANA REPUBLIC

Foot Locker

Lindt

LENSCRAFTERS

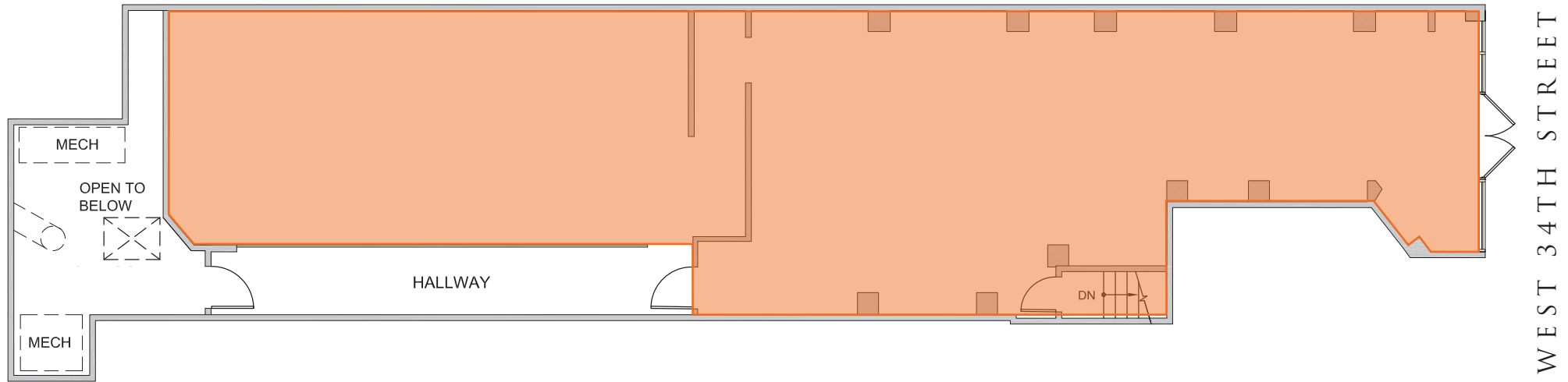
BANK OF AMERICA

CVS

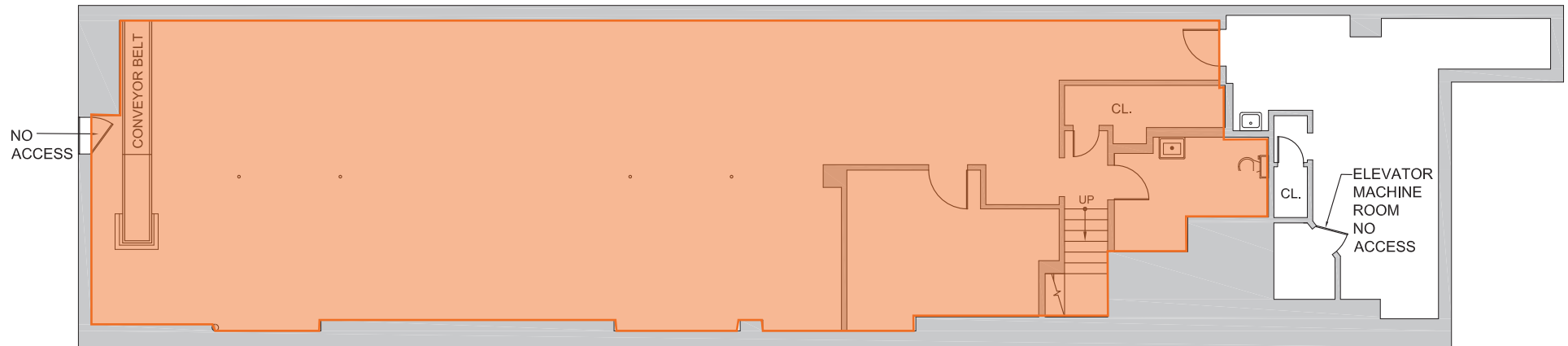
36

WEST 34TH STREET

FLOOR PLAN:
GROUND FLOOR - 2,119 SF



BASEMENT - 2,019 SF



All information supplied in this marketing presentation and/or flyer is from sources deemed reliable and is furnished subject to errors, omissions, modifications, removal of listings from sale/lease and to any listing condition. Any square footage, dimensions, floor plans and/or technical data set forth are approximations and are subject to further elaboration/confirmation.

36

WEST 34TH STREET

BETWEEN 5TH & 6TH AVENUES
MIDTOWN



36 West 34th Street is situated in the heart of Midtown Manhattan's major commercial hub known as Herald Square.

Formed by the intersection of Broadway, Sixth Avenue (officially Avenue of the Americas), and 34th Street, Herald Square is named for the New York Herald newspaper, whose building was located on 35th Street from 1893 to the 1920s.

The square's most prominent feature is the elaborate Bennett Clock, named for Herald publisher James Gordon Bennett Jr. The monument features the Bellringers, dubbed "Guff" and "Stuff," and owls with flashing green eyes. Owls were Bennett's talisman, and the new massive granite gateposts, installed by the Partnership, feature bronze owl figures by sculptor Greg Lefevre.

Herald Square is a wonderful place to take a break from shopping and sightseeing: pull up a chair, enjoy some refreshments from the food kiosk operated by Wafels & Dinges, and rest your eyes on the Partnership's award-winning gardens. And be sure to catch Guff and Stuff ringing their bells every hour on the hour.



19,714
TOTAL POPULATION

\$123K
AVERAGE INCOME

10,465
TOTAL HOUSEHOLDS

62.3K
AVERAGE VISITORS/DAY



BETWEEN 5TH & 6TH AVENUES
HERALD SQUARE | MIDTOWN

FOR MORE INFORMATION,
PLEASE CONTACT:

DOREL MELLOUL

347.922.4563 | DMelloul@ksrny.com

MARC SITT

917.757.8863 | MSitt@ksrny.com

ALBERT MANOPLA

212.380.8369 | AManopla@ksrny.com

