



TURN-KEY OFFICE IN DOWNTOWN ASHEVILLE

FOR LEASE

72 PATTON AVENUE,
SUITE 200
ASHEVILLE, NC 28801



OFFERING SUMMARY

Lease Rate	\$25.00 SF/YR
Available SF	5,939 SF
Lease Type	Full Service
Year Built/Renovated	1920/2018
Zoning	CBD
Market	Downtown



TURN-KEY OFFICE IN DOWNTOWN ASHEVILLE

72 Patton Avenue, Suite 200, Asheville, NC 28801



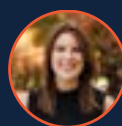
PROPERTY DESCRIPTION

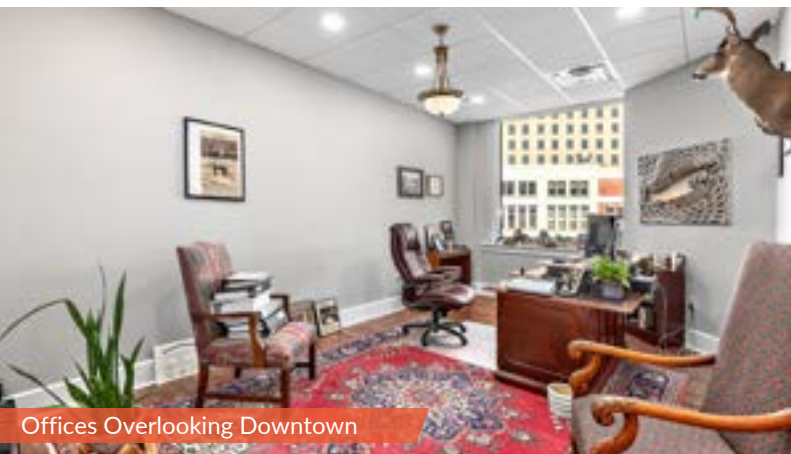
Well-appointed turnkey office located in the center of downtown Asheville and steps away from the region's best restaurants, coffee, and shopping. Efficient layout is conducive to a variety of professional settings, especially law or accounting offices. Historic 1920s-era building with original details throughout but the convenience of modern upgrades.

Entrances from both Patton Ave and Commerce St with secured elevator access that opens directly into the attractive reception area with historic coffered ceilings. Offers 11 spacious private offices including 4 bright executive offices overlooking downtown, cubicle areas for support staff, a small conference room, breakroom with kitchen, lounge area, private restrooms, and file/work room with adjoining office. Impressive conference room immediately off reception with built-ins, hardwood flooring, and coved ceilings.

PROPERTY HIGHLIGHTS

- Walkable downtown location
- Well designed and efficient layout
- Private garage available
- Competitive full service lease rate
- Versatile space for various business needs
- Historically elegant with modern upgrades
- Potential to subdivide





Offices Overlooking Downtown



Large Executive Conference Room



Main Building Lobby



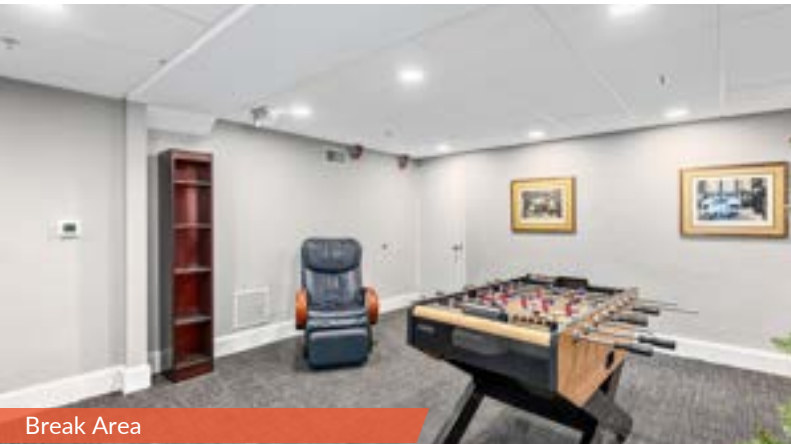
Private Office in Mezzanine Area



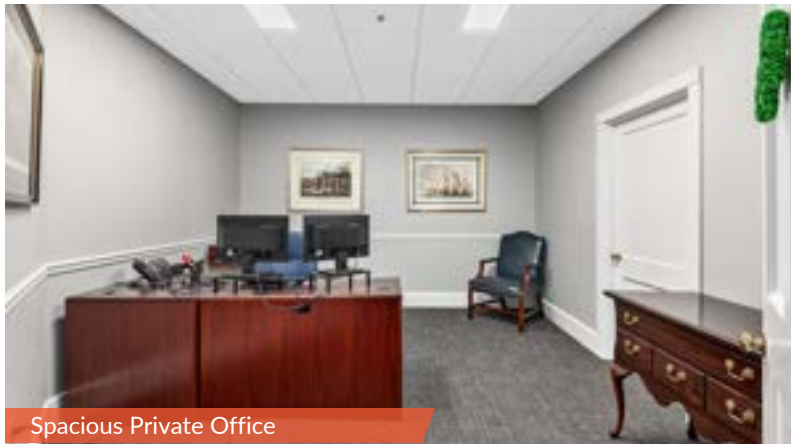
Breakroom with Kitchen



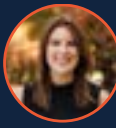
Additional Smaller Conference Room



Break Area



Spacious Private Office



Stephanie West, CCIM
COMMERCIAL BROKER
Cell: 828.712.2828
Office: 828.418.1277
SWEST@WHITNEYCRE.COM

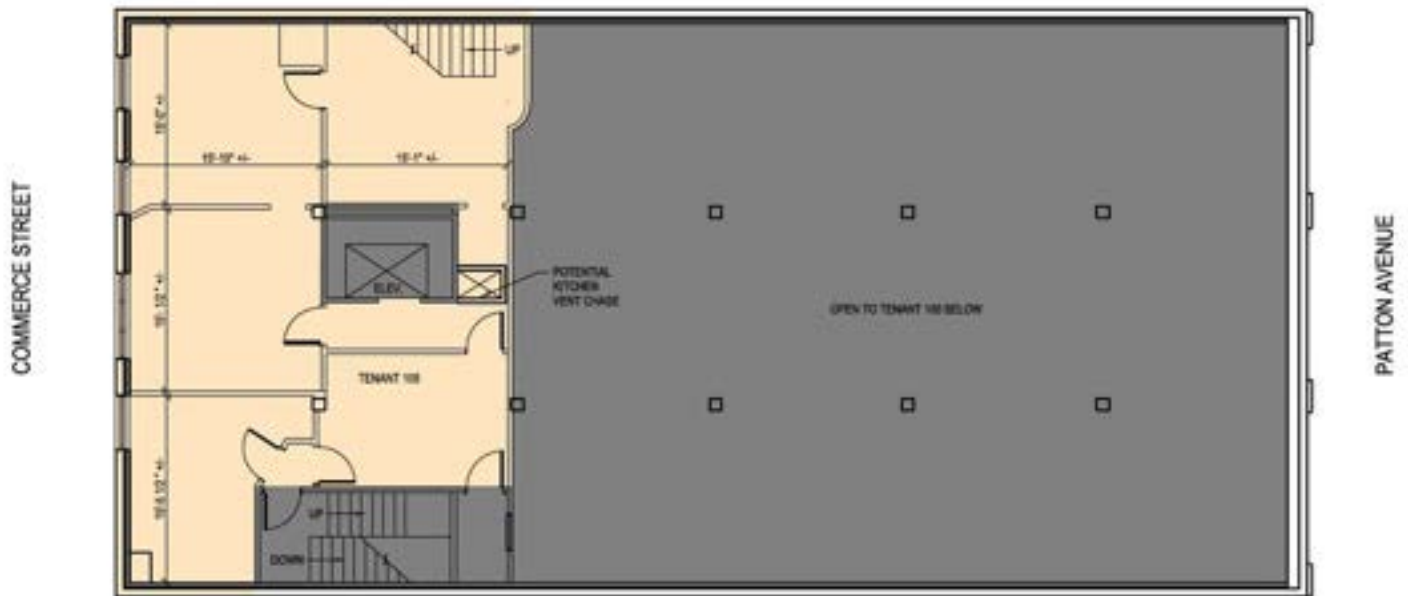
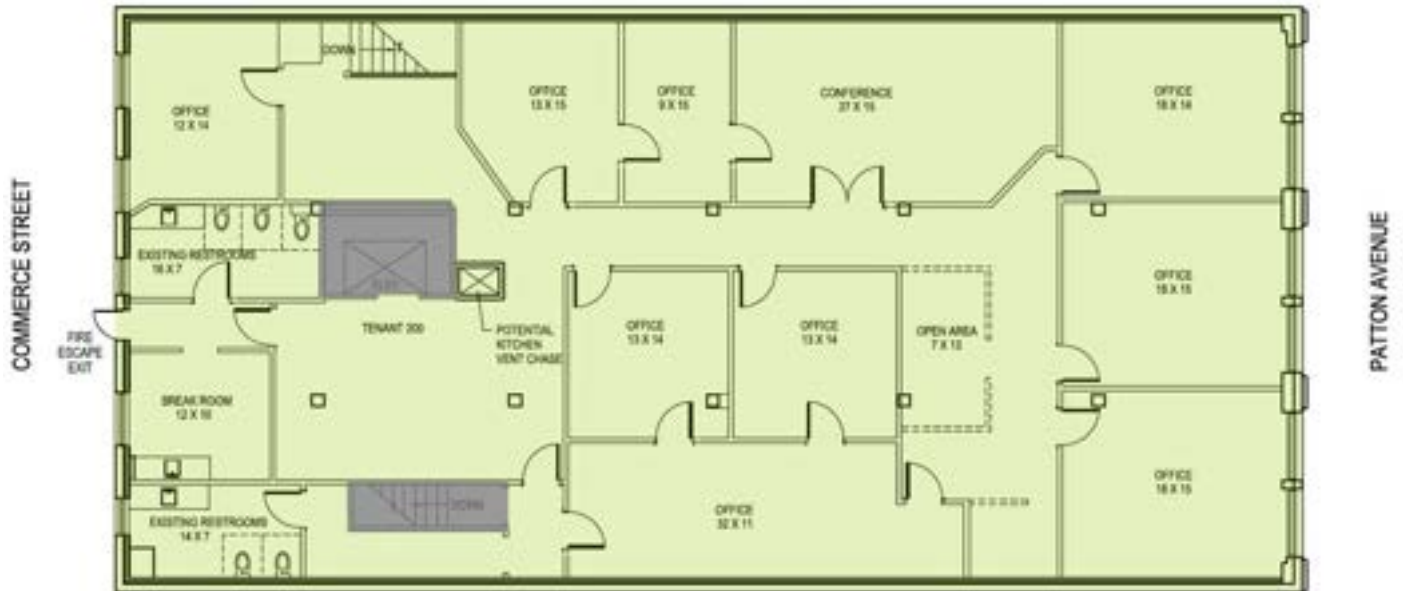


Austin Walker, CCIM, SIOR
COMMERCIAL BROKER
Cell: 828.713.0777
Office: 828.418.1278
AWALKER@WHITNEYCRE.COM

All information herein is obtained from sources deemed reliable but not guaranteed, and may change or be updated without notice.

TURN-KEY OFFICE IN DOWNTOWN ASHEVILLE

72 Patton Avenue, Suite 200, Asheville, NC 28801



*Mezzanine office/lounge area



Stephanie West, CCIM
COMMERCIAL BROKER
Cell: 828.712.2828
Office: 828.418.1277
SWEST@WHITNEYCRE.COM



Austin Walker, CCIM, SIOR
COMMERCIAL BROKER
Cell: 828.713.0777
Office: 828.418.1278
AWALKER@WHITNEYCRE.COM