

±3-4 Acres Left!
Can be leased as a whole or divided

Colliers



Heavy Industrial Space

For Lease

355 S Vasco Road | Livermore, CA

Highlights



±3 - 4 Acres fenced
& graveled yard



±7,000 SF
of office space



Easy access
to I-580

Contact Brokers

Michael Carrigg, SIOR
Executive Managing Director
CA License No. 01298928
michael.carrigg@colliers.com
+1 925 227 6220

Mark Maguire
Executive Vice President
CA License No. 01190597
mark.maguire@colliers.com
+1 510 433 5835

Michael Donnelly, SIOR
Senior Vice President
CA License No. 01402626
michael.donnelly@colliers.com
+1 925 227 6241

Property Overview



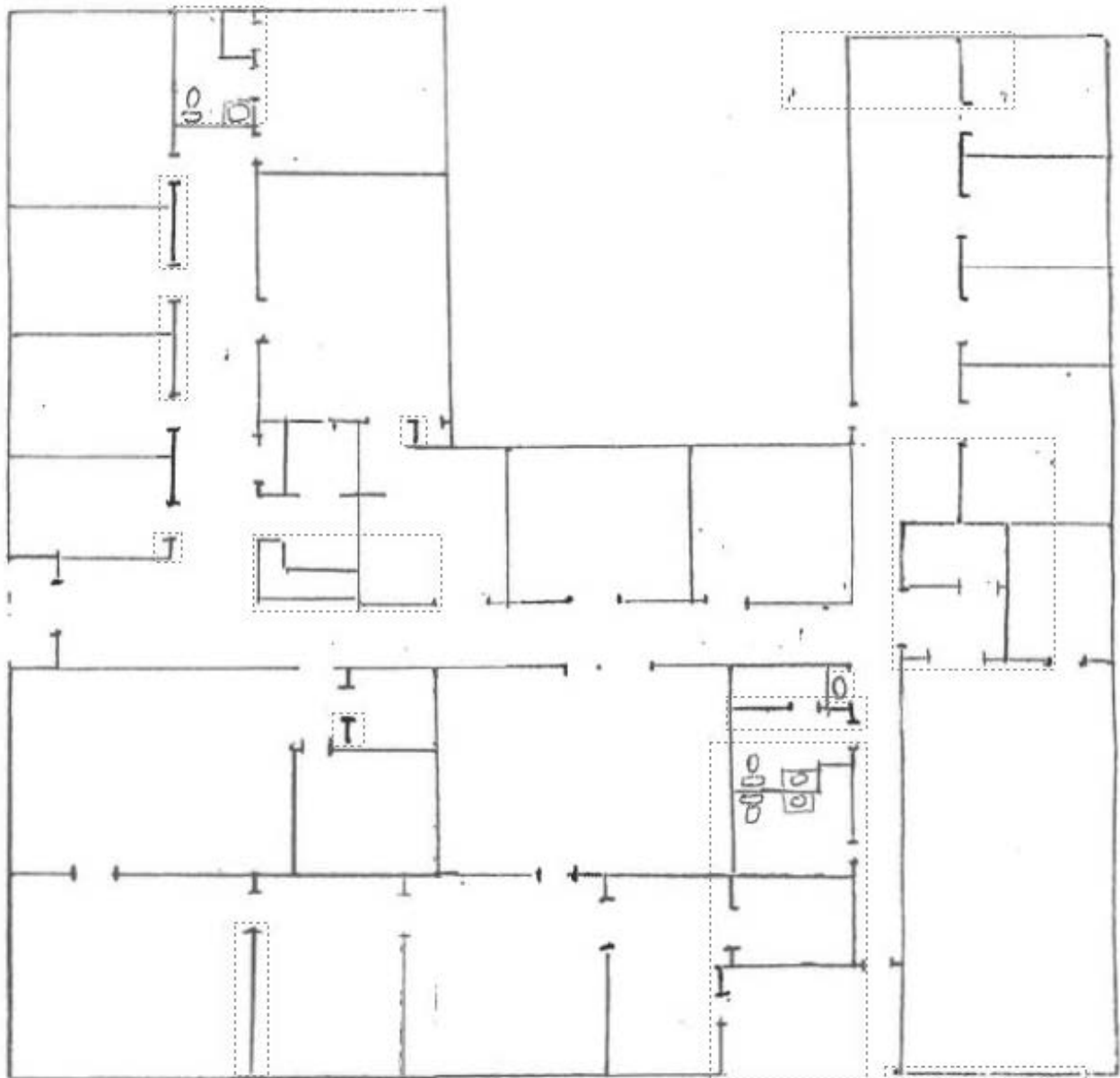
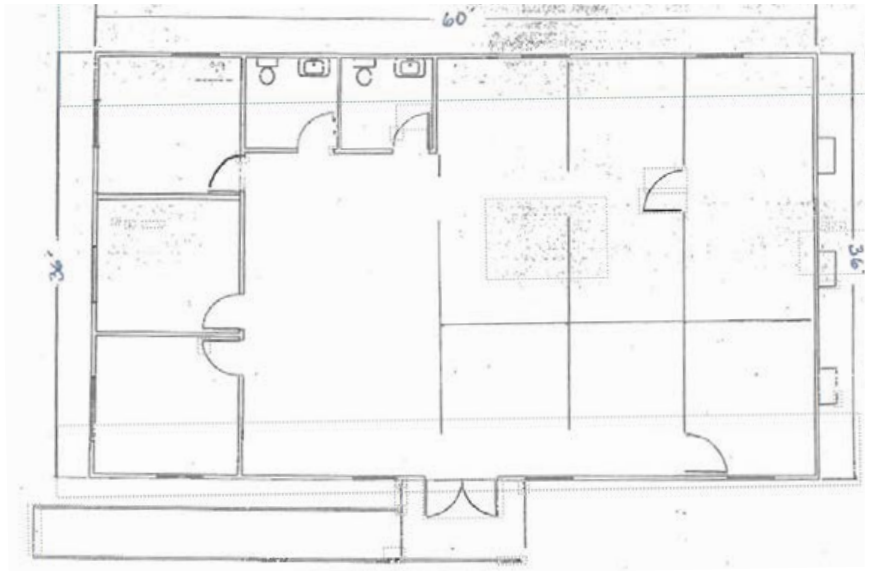
Description

- ±7,000 SF of office
- Secure rocked and fenced yard
- Heavy power
- Rail Spur on site
- Close proximity to I-580
- Adjacent to Vasco Rd ACE Station
- Ideal for contractor yard
- Ideal for outdoor storage
- Potentially divisible
- Lease rate: contact brokers

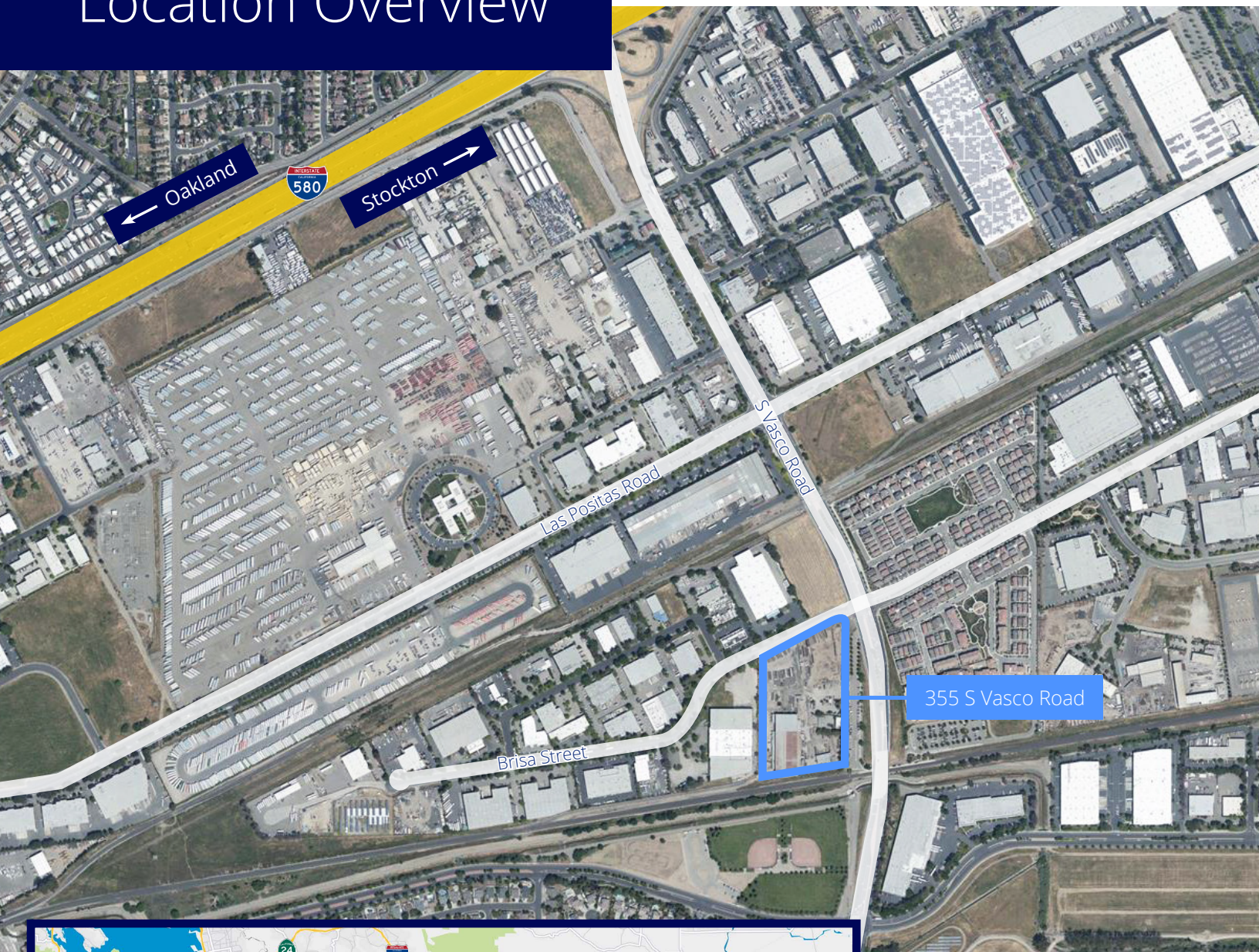
Floor Plans

Office Spaces

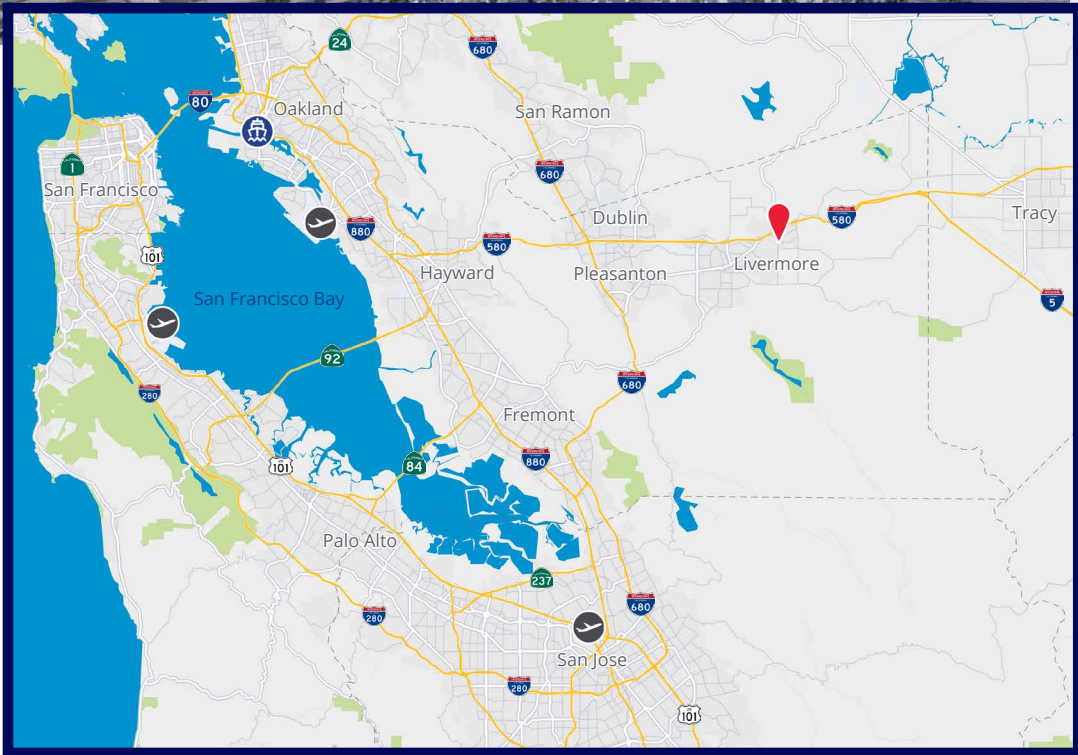
- ±7,000 SF of office



Location Overview



355 S Vasco Road



Proximity to Major Cities

- 35.5 miles Oakland
- 39.5 miles San Jose
- 46.5 miles San Francisco

This document has been prepared by Colliers for advertising and general information only. Colliers makes no guarantees, representations or warranties of any kind, expressed or implied, regarding the information including, but not limited to, warranties of content, accuracy and reliability. Any interested party should undertake their own inquiries as to the accuracy of the information. Colliers excludes unequivocally all inferred or implied terms, conditions and warranties arising out of this document and excludes all liability for loss and damages arising there from. This publication is the copyrighted property of Colliers and /or its licensor(s). © 2026. All rights reserved. This communication is not intended to cause or induce breach of an existing listing agreement.

Photo Gallery

