

FOR LEASE /// 75,700 SF ON ±5.25 ACRES

1210 N. TUSTIN AVENUE

RARE EXCESS LAND

ANAHEIM | CA | NORTH ORANGE COUNTY



PROPERTY HIGHLIGHTS:

- ±75,700 SF Freestanding Industrial Building on 5.25 Acres (.33 FAR)
- 10,000 SF of Two-Story Upgraded Office Space
- Large Secured Yard Area
- 5-Ton Crane way in 45' clear area
- Two (2) 1-Ton Cranes
- Seven (7) Ground Loading Doors
- 24-45' Warehouse Clearance
- 1,600 Amps 277/480V (verify)
- Fire Sprinklers
- Points of Entry off 2 Major Streets
- Drive Around Access
- Prime East Anaheim Location
- Close Proximity to 91/57/55/5 Freeways
- Anaheim Canyon Commuter Rail within walking distance
- Rail Possible
- Asking \$1.25 Gross PSF

FOR MORE INFORMATION, CONTACT:

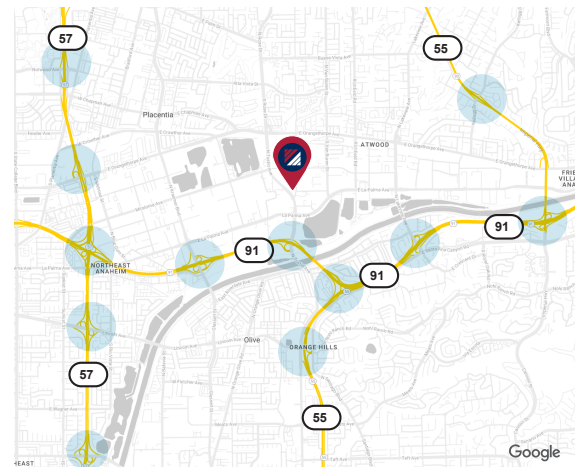
CHRIS MIGLIORI

EXEC. VICE PRESIDENT

P: 714.385.1801

E: CHRIS.MIGLIORI@DAUMCOMMERCIAL.COM

DRE LIC. #00972843



D/AQ Corp. #01129558. Maps Courtesy ©Google & ©Microsoft. Although all information is furnished regarding for sale, rental or financing from sources deemed reliable, such information has not been verified and no express representation is made nor is any to be implied as to the accuracy thereof, and it is submitted subject to errors, omissions, changes of price, rental or other conditions, prior sale, lease or financing, or withdrawal without notice.

www.daumcommercial.com

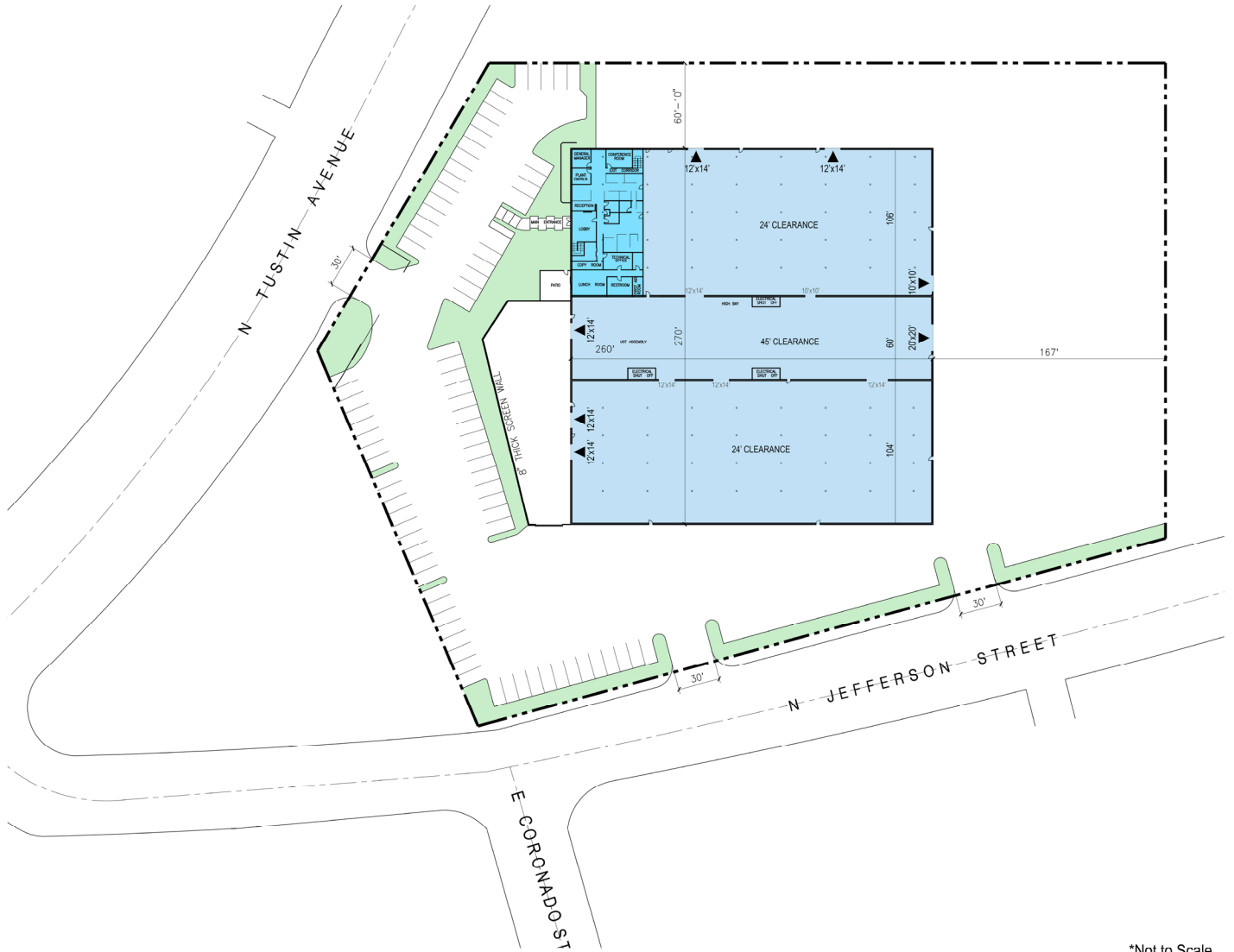
DAUM
COMMERCIAL REAL ESTATE SERVICES

FOR LEASE /// 75,700 SF ON ±5.25 ACRES

1210 N. TUSTIN AVENUE

RARE EXCESS LAND

ANAHEIM | CA | NORTH ORANGE COUNTY



*Not to Scale

FOR MORE INFORMATION, CONTACT:

CHRIS MIGLIORI

EXEC. VICE PRESIDENT

P: 714.385.1801

E: CHRIS.MIGLIORI@DAUMCOMMERCIAL.COM

DRE LIC. #00972843

D/AQ Corp. #01129558. Maps Courtesy ©Google & ©Microsoft. Although all information is furnished regarding for sale, rental or financing from sources deemed reliable, such information has not been verified and no express representation is made nor is any to be implied as to the accuracy thereof, and it is submitted subject to errors, omissions, changes of price, rental or other conditions, prior sale, lease or financing, or withdrawal without notice.

www.daumcommercial.com



FOR LEASE /// 75,700 SF ON ±5.25 ACRES

1210 N. TUSTIN AVENUE

RARE EXCESS LAND

ANAHEIM | CA | NORTH ORANGE COUNTY



FOR MORE INFORMATION, CONTACT:

CHRIS MIGLIORI

EXEC. VICE PRESIDENT

P: 714.385.1801

E: CHRIS.MIGLIORI@DAUMCOMMERCIAL.COM

DRE LIC. #00972843

D/AQ Corp. #01129558. Maps Courtesy ©Google & ©Microsoft. Although all information is furnished regarding for sale, rental or financing from sources deemed reliable, such information has not been verified and no express representation is made nor is any to be implied as to the accuracy thereof, and it is submitted subject to errors, omissions, changes of price, rental or other conditions, prior sale, lease or financing, or withdrawal without notice.

www.daumcommercial.com



FOR LEASE /// 75,700 SF ON ±5.25 ACRES

1210 N. TUSTIN AVENUE

RARE EXCESS LAND

ANAHEIM | CA | NORTH ORANGE COUNTY



FOR MORE INFORMATION, CONTACT:

CHRIS MIGLIORI

EXEC. VICE PRESIDENT

P: 714.385.1801

E: CHRIS.MIGLIORI@DAUMCOMMERCIAL.COM

DRE LIC. #00972843

D/AQ Corp. #01129558. Maps Courtesy ©Google & ©Microsoft. Although all information is furnished regarding for sale, rental or financing from sources deemed reliable, such information has not been verified and no express representation is made nor is any to be implied as to the accuracy thereof, and it is submitted subject to errors, omissions, changes of price, rental or other conditions, prior sale, lease or financing, or withdrawal without notice.

www.daumcommercial.com

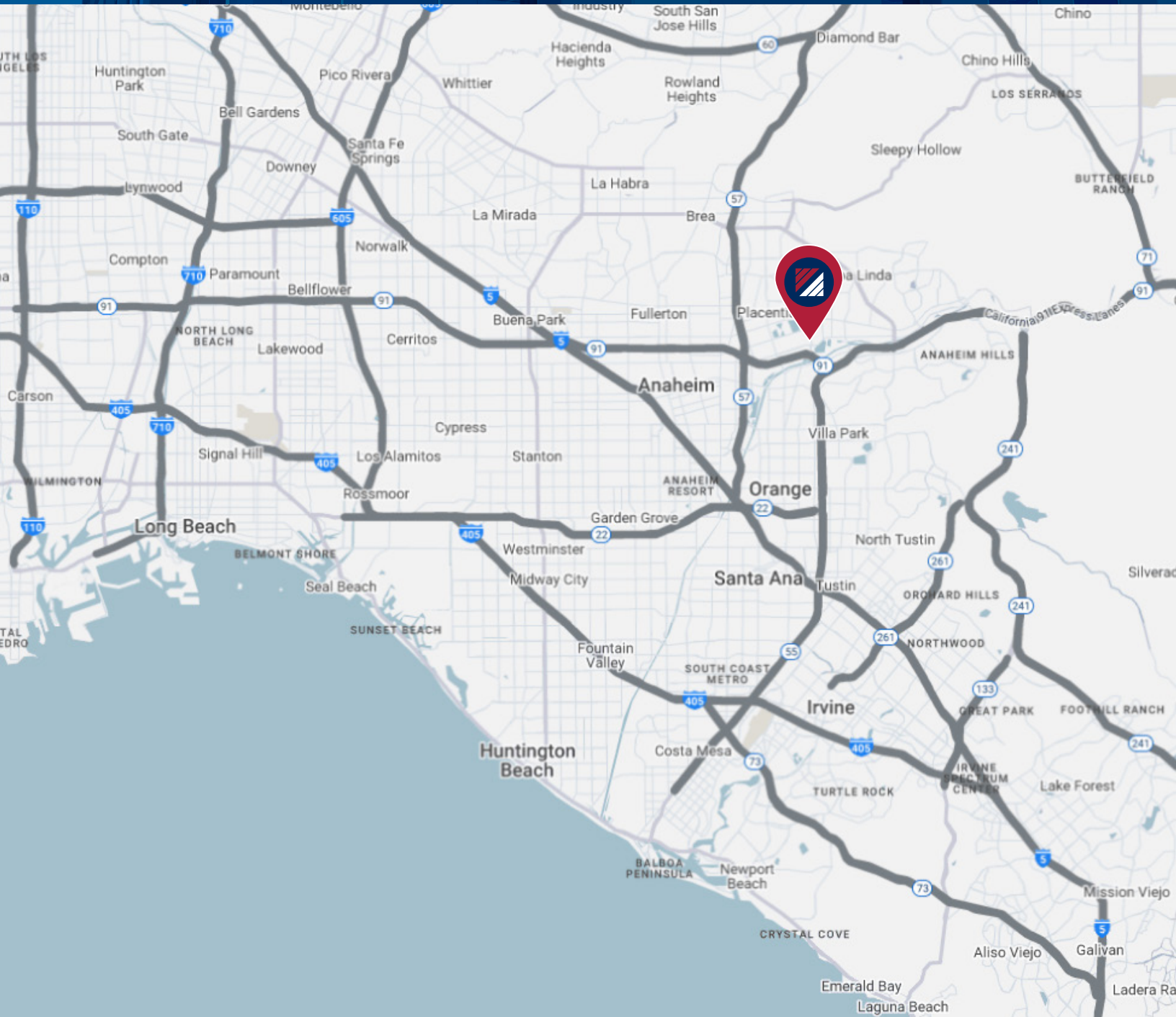


FOR LEASE /// 75,700 SF ON ±5.25 ACRES

1210 N. TUSTIN AVENUE

RARE EXCESS LAND

ANAHEIM | CA | NORTH ORANGE COUNTY



FOR MORE INFORMATION, CONTACT:

CHRIS MIGLIORI

EXEC. VICE PRESIDENT

P: 714.385.1801

E: CHRIS.MIGLIORI@DAUMCOMMERCIAL.COM

DRE LIC. #00972843

D/AQ Corp. #01129558. Maps Courtesy ©Google & ©Microsoft. Although all information is furnished regarding for sale, rental or financing from sources deemed reliable, such information has not been verified and no express representation is made nor is any to be implied as to the accuracy thereof, and it is submitted subject to errors, omissions, changes of price, rental or other conditions, prior sale, lease or financing, or withdrawal without notice.

www.daumcommercial.com

