



# VALUE INDUSTRIAL PARTNERS, LLC

Industrial Real Estate Investment, Brokerage and Management

477 W. Wrightwood Avenue, Elmhurst, Illinois 60126 TEL: 630-333-1900 FAX: 630-333-1910



## 763 Edgewood Wood Dale, Illinois

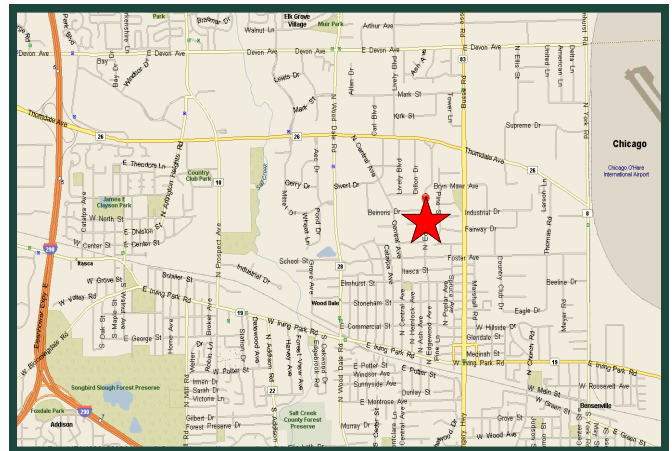
## FOR LEASE 5,000 SF

### Building Specifications

Available Size:	5,000 Square Feet
Building Size:	40,000 Square Feet
Office:	15%
Ceiling Height:	14'
Loading:	1 Dock (Shared) 1 Drive-In Door
Power:	200 Amps
Sprinklered:	Yes
CAM:	Included with Current Stop
Taxes:	Included with Current Stop

### Comments

- Professionally owned and managed
- Minutes from I-355/I-290 at Thorndale



### For Further Information, Please Contact:

**Brian P. Gedvilas, Director of Leasing**  
bgedvilas@valueindustrialpartners.com

**Brian M. Liston, Principal**  
bliston@valueindustrialpartners.com

**TEL: 630-333-1900 FAX: 630-333-1910**

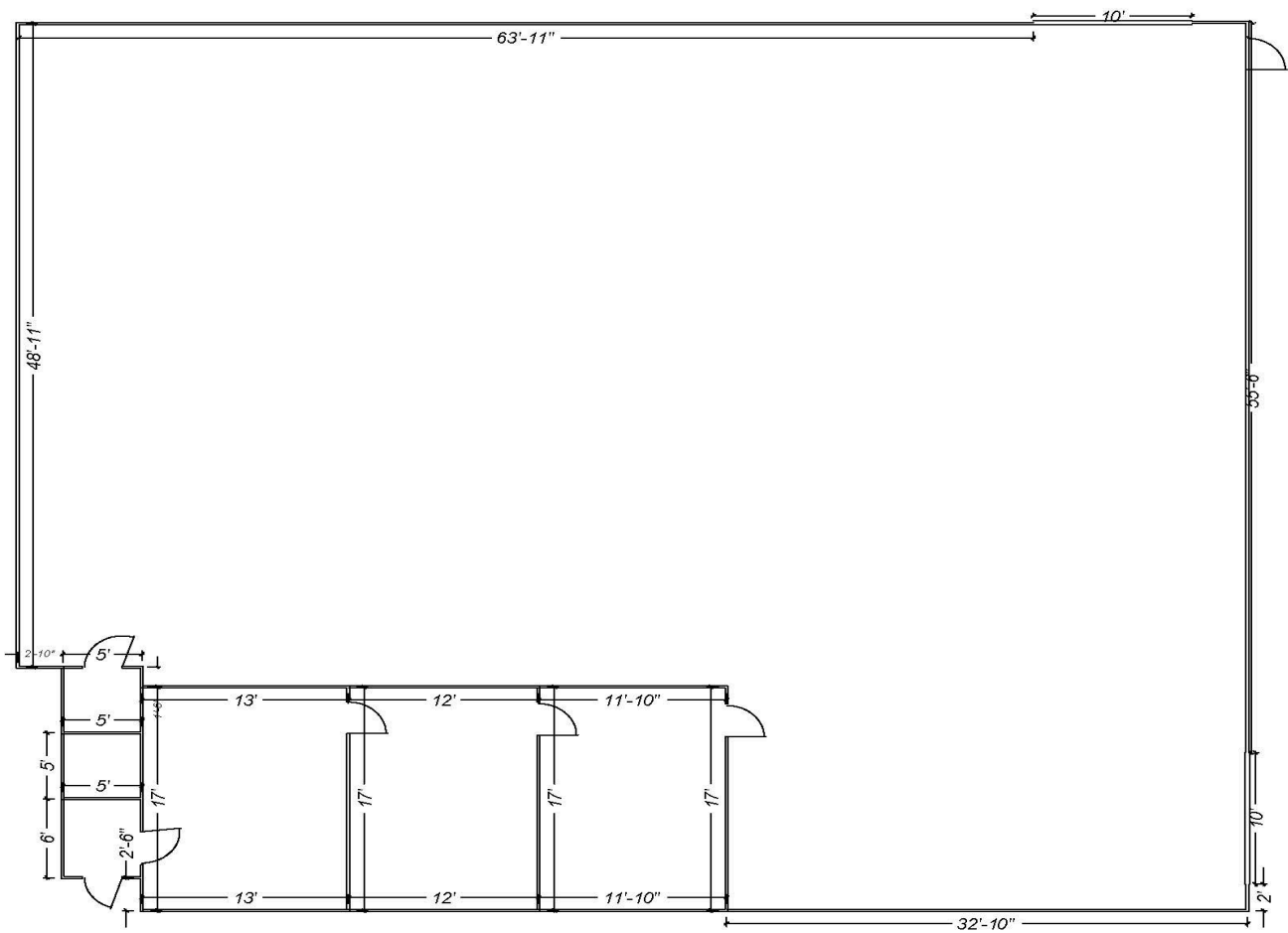


# VALUE INDUSTRIAL PARTNERS, LLC

Industrial Real Estate Investment, Brokerage and Management

477 W. Wrightwood Avenue, Elmhurst, Illinois 60126 TEL: 630-333-1900 FAX: 630-333-1910

## LAYOUT



FOR ILLUSTRATION PURPOSES ONLY. DIMENSIONS TO BE CONFIRMED.

Officers of the firm have an ownership interest in this property.  
Submitted subject to error, change in status, or withdrawal without notice.