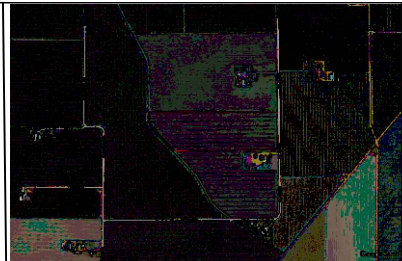
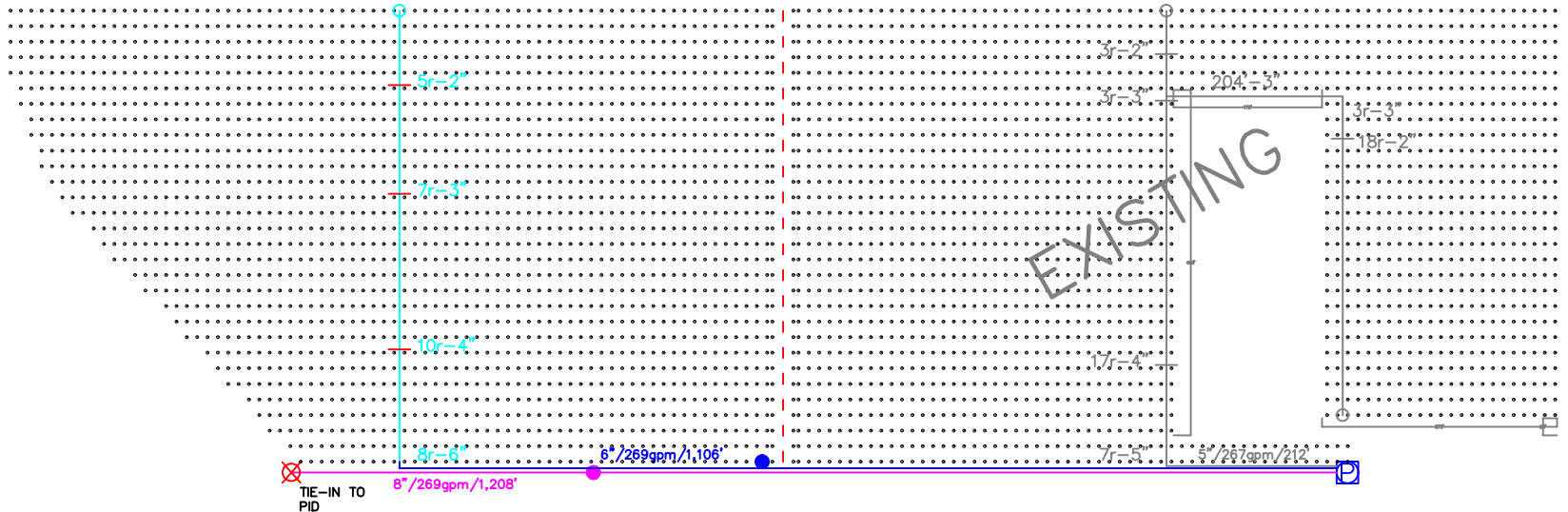


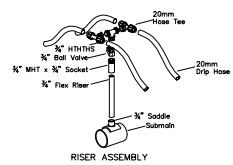


APRICOTS  
1906 TREES  
9.5 AC

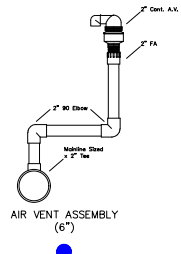
CHERRIES  
1875 TREES  
9.4AC



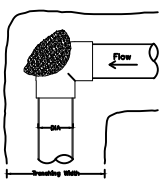
VICINITY MAP



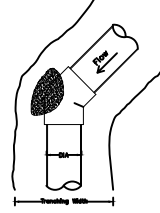
RISER ASSEMBLY



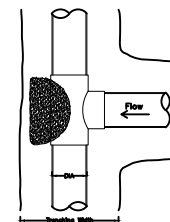
AIR VENT ASSEMBLY (6")



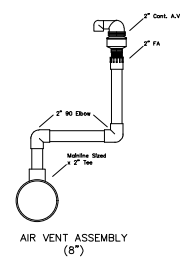
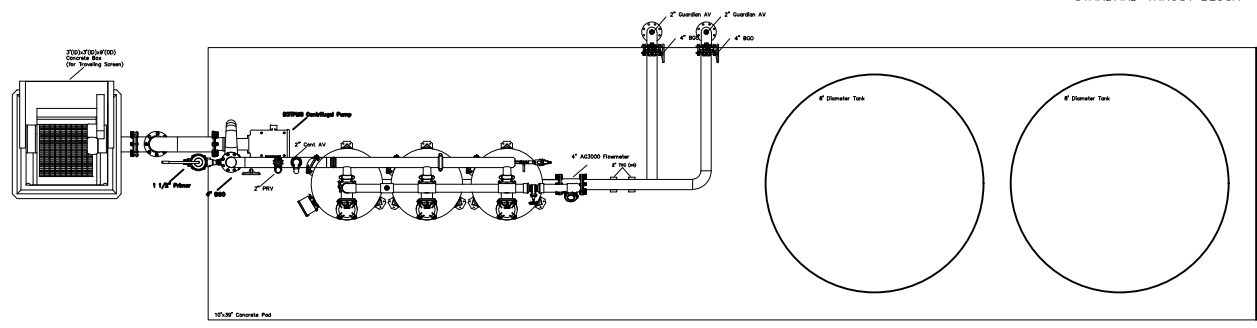
STANDARD THRUST BLOCK



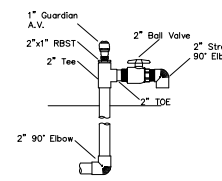
STANDARD THRUST BLOCK



STANDARD THRUST BLOCK



AIR VENT ASSEMBLY (8")



2" FLUSHOUT ASSEMBLY



MIN. COVER FOR PVC PIPE	
4" & SMALLER	24"
5" & LARGER	30"
PVC CEMENT	
705	3" & SMALLER
717	4" & LARGER
719	SADDLES
795	FLEX. PVC
P-70	PRIMER

LEGEND			
	PUMP		AIR VENT
	CONTROL VALVE		FLUSHOUT
	P.R. VALVE		TREE
	SUPPLY PIPELINE		
	MAINLINE		
	SUBMAIN		
	LATERAL		
	HOSE BREAK		
	SET BREAK		

±9.5 ACRES OF APRICOTS (1,925 TREES) ON 12' x 18' SQUARE SPACING	
±9.4 ACRES OF CHERRIES (1,879 TREES) ON 12' x 18' SQUARE SPACING	
DUAL LINE DRIP PC @ 0.53gph @ 18" EMITTER SPACING	
① 15.0 psi(min) = 0.53gph/EMITTER = 28.5 gpm/acre = 0.063 in/hr	
PUMP REQUIREMENTS	
MINIMUM EMITTER PRESSURE	15.0 PSI
LATERAL PRESSURE LOSS	3.8 PSI
SUBMAIN PRESSURE LOSS	2.8 PSI
MAINLINE PRESSURE LOSS	4.7 PSI
VALVE AND FILTER LOSS	7.0 PSI
SET ONE	274 GPM @ 33.3 PSI
SET TWO	266 GPM @ 28.5 PSI

NOTES:

- SYSTEM DESIGNED TO OPERATE IN TWO SETS
- ALL LATERALS ARE 20mm (0.690"x0.790") P.C. DUAL LINE DRIP
- ALL SUBMAINS ARE 2" CL125, & 3", 4" & 5" CL100 IPS PVC PIPE
- ALL MAINLINES ARE 5" CL100 IPS PVC PIPE

ANY USE OF THIS ARTICLE WITHOUT PACIFIC SOUTHWEST IRRIGATION'S CONSENT IS STRICTLY PROHIBITED.

LICENSE NO. 835461  
8372 S. JACK TONE RD.  
STOCKTON, CA 95215

## SUN VALLEY INDUSTRIES

ALFALFA RD./CROWS LANDING	DESIGN NO. 2024113	26 JUNE 2024
DESIGNED BY: JDF/TSD	SCALE: 1" = 100' ARCH C	0"  1" ANY REPRESENTS 1" ON ORIGINAL DRAWING. USE FOR SCALE ON REDUCED PLOTS.
DRAWN BY: JDF/TSD	REVIEWED BY: TSD	