

Kings Highway Industrial Park

FOR LEASE
\$14.00/SF NNN

Two Warehouse/Distribution Buildings | 7328 & 7332 Commercial Circle, Fort Pierce

BUILDING 2

4,952 SF

BUILDING 1

7,158 SF

COMMERCIAL CIRCLE



Presented By:

NAI Southcoast

Douglas Legler

Principal | Broker Associate

+1 772 405 7778

douglas@naisouthcoast.com

Casey Combs

Broker Associate

+1 772 285 8769

ccombs@naisouthcoast.com



NAI Southcoast | 100 SW Albany Avenue, 2nd Floor, Stuart, FL 34994 | O: 772.286.6292 | naisouthcoast.com

Property Details

Address:	7328 & 7332 Commercial Circle Fort Pierce, FL 34951
Lease Price:	\$14.00/SF NNN
Total Finished Area:	±12,110 SF
Available Spaces:	Building 1: 7,158 SF Building 2: 4,952 SF
Zoning:	Warehouse Industrial
Municipality:	Fort Pierce
Roll-Up Doors:	Building 1: (4) 12.5'H x 11'W doors Building 2: (2) 12.5'H x 11'W dock-high doors (1) 14'H x 14'W ramp-access door
Ceiling Height:	20'

Property Overview

Excellent opportunity to lease up to ±12,110 SF of industrial space on ±1.14 acres within the Kings Hwy Industrial Park in Fort Pierce, with the flexibility to lease Building 1, Building 2, or both. Zoned IL – Industrial Light, the property is ideal for warehousing, distribution, or service operations and offers excellent access to the I-95 Orange Avenue Interchange (Exit 131) and the Florida Turnpike. Building 1 includes 7,158 SF with four 12.5'H x 11'W doors (three dock-high, one ramp), a finished showroom, office area, and 3-phase power. Building 2 offers 4,952 SF with two 12.5'H x 11'W dock-high doors and one 14'H x 14'W ramp-access door. Both buildings feature 20' clear heights, LED lighting, and a new roof, with additional parking lot and loading ramp improvements currently underway to enhance overall functionality and curb appeal.





BUILDING 1
7,158 SF





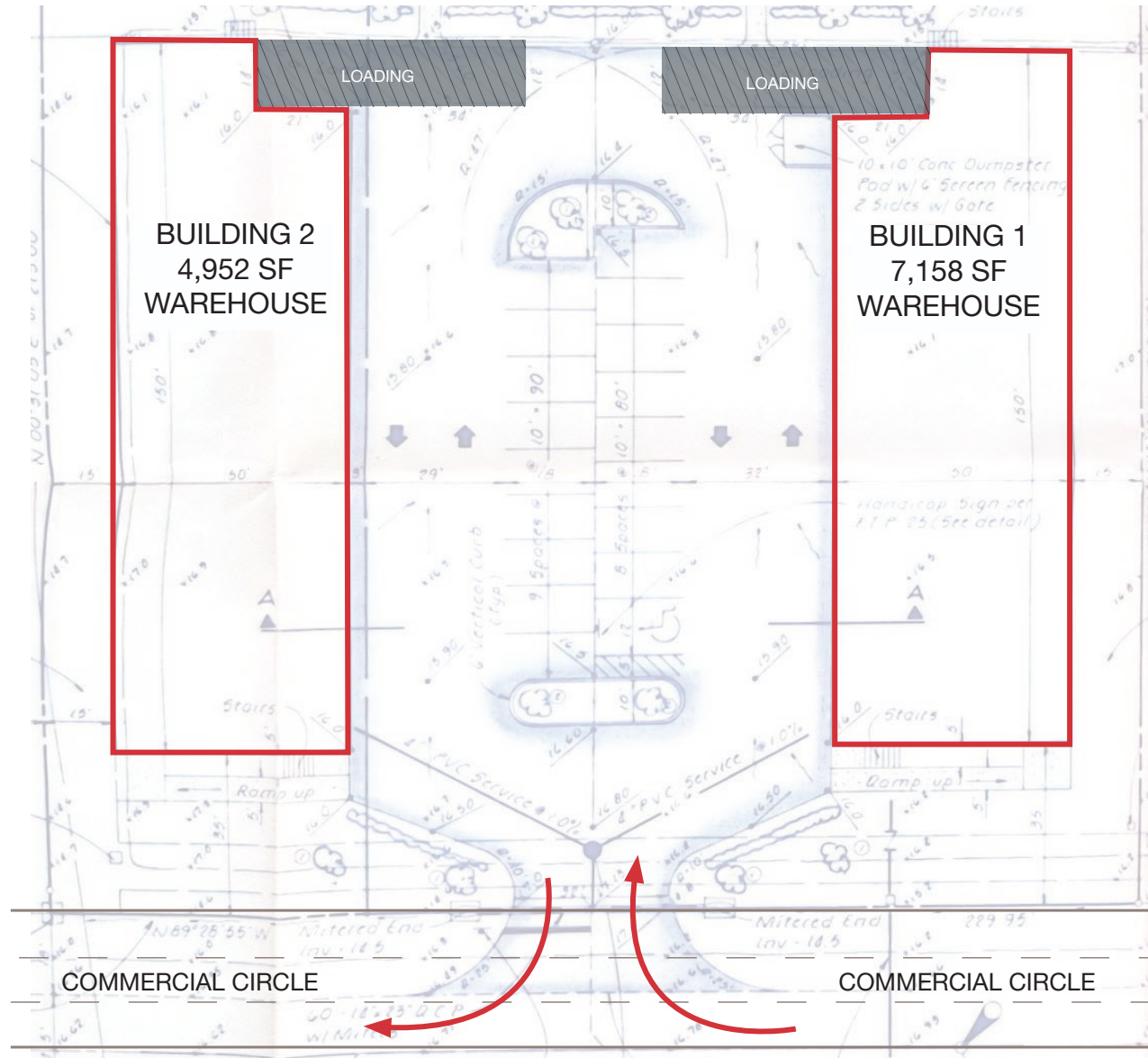
BUILDING 2
4,952 SF

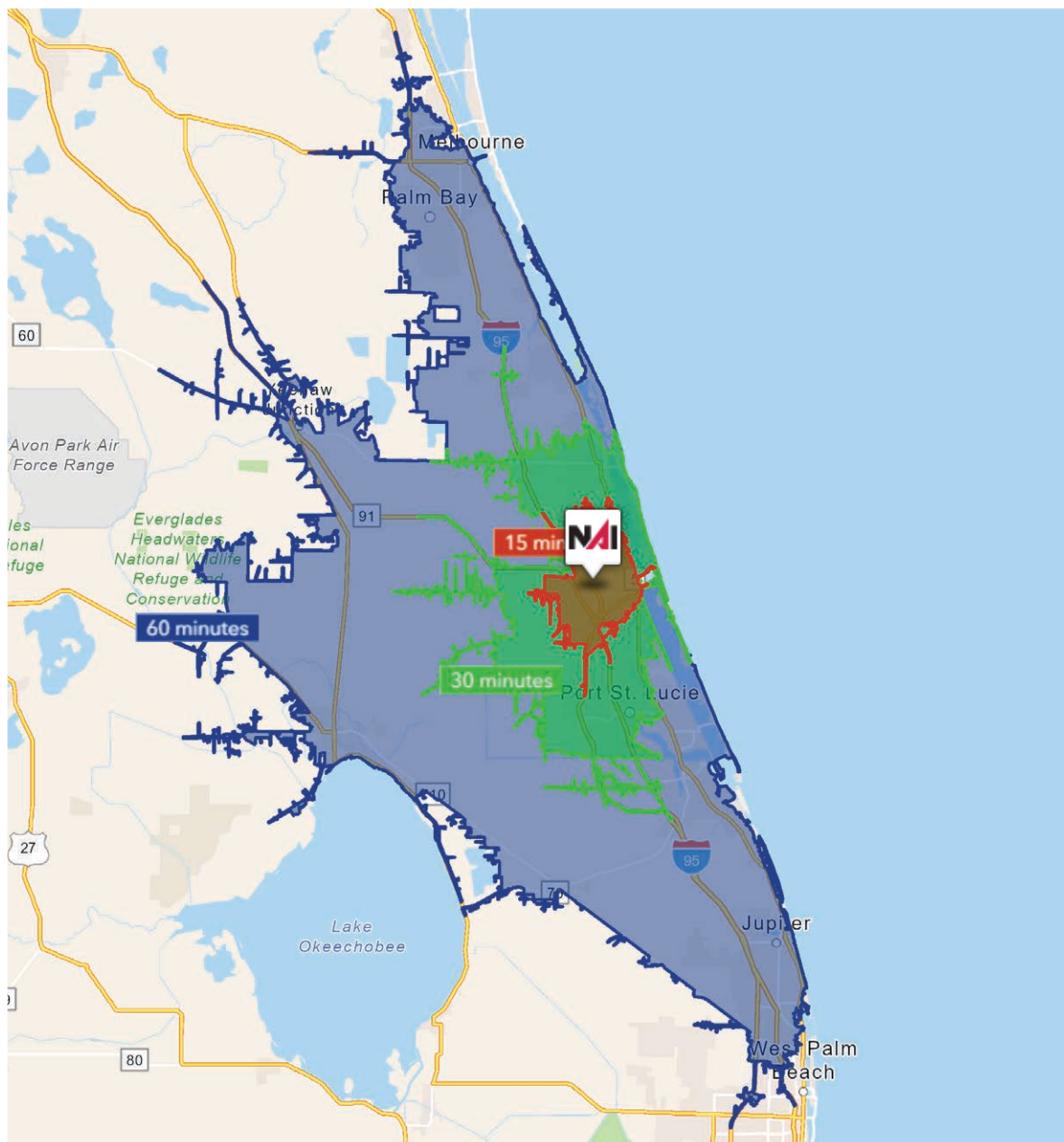




BUILDING 2
4,952 SF







15 Minutes

57,976

2010 Population

68,823

2025 Population

18.7%

2010-2025
Population Growth

2.01%

2025-2030 (Annual)
Est. Population Growth

40.6

2025 Median Age

\$71,014

Average Household
Income

31.5%

Percentage with
Associates Degree
or Better

50.1%

Percentage in White
Collar Profession

30 Minutes

326,070

2010 Population

435,951

2025 Population

33.6%

2010-2025
Population Growth

2.26%

2025-2030 (Annual)
Est. Population Growth

47.3

2025 Median Age

\$97,693

Average Household
Income

41.4%

Percentage with
Associates Degree
or Better

58.0%

Percentage in White
Collar Profession

60 Minutes

996,066

2010 Population

1,228,823

2025 Population

23.3%

2010-2025
Population Growth

1.36%

2025-2030 (Annual)
Est. Population Growth

48.6

2025 Median Age

\$116,286

Average Household
Income

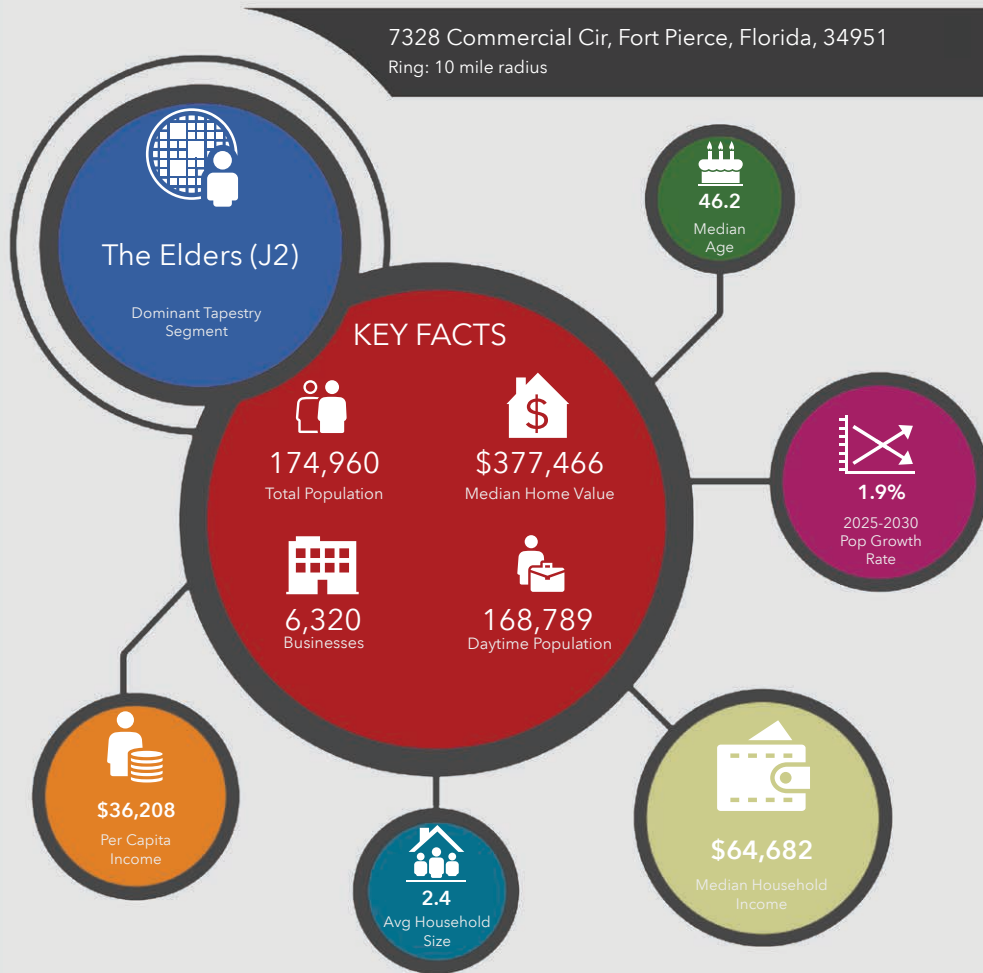
46.6%

Percentage with
Associates Degree
or Better

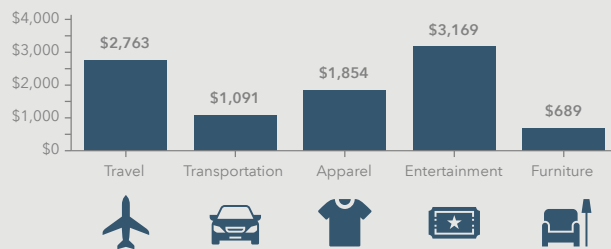
61.4%

Percentage in White
Collar Profession

7328 Commercial Cir, Fort Pierce, Florida, 34951
Ring: 10 mile radius



KEY SPENDING FACTS



NAISouthcoast
COMMERCIAL REAL ESTATE SERVICES, INC.

Source: This infographic contains data provided by Esri (2025, 2030), Esri-Data Axle (2025), Esri-U.S. BLS (2025).

© 2025 Esri

Spending facts are average annual dollars per household

Population

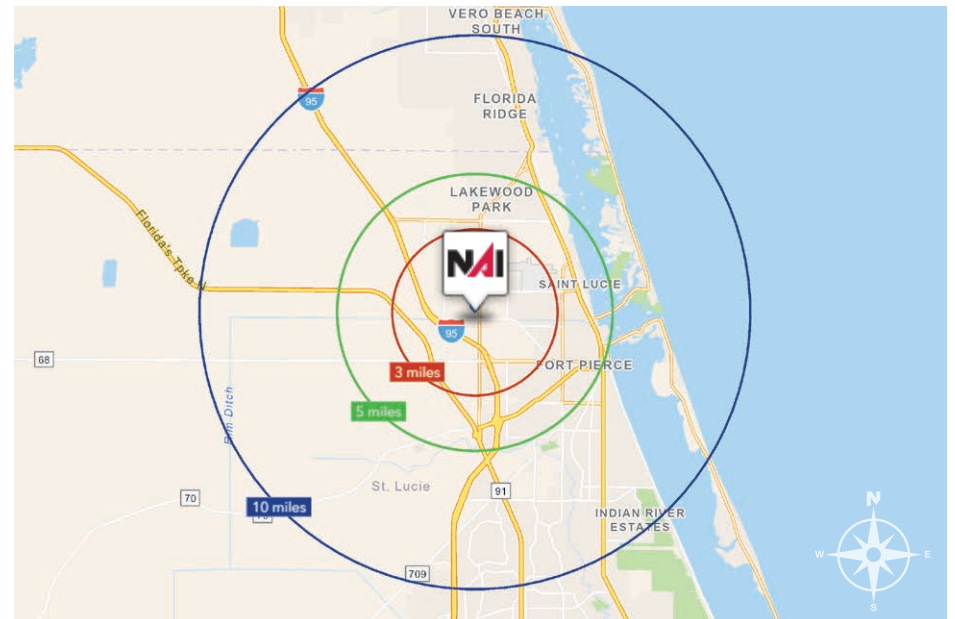
3 Miles:	11,966
5 Miles:	54,723
10 Miles:	174,960

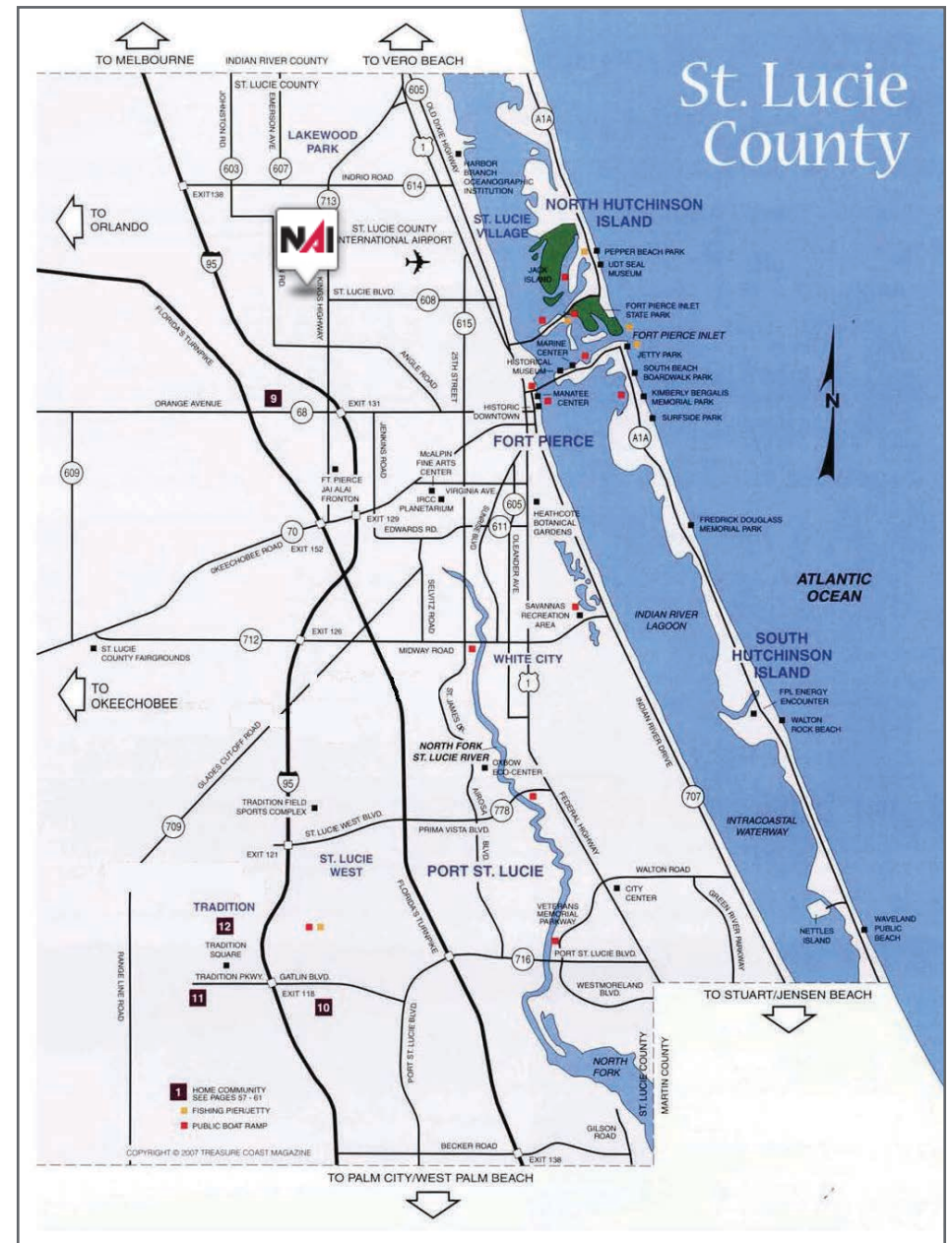
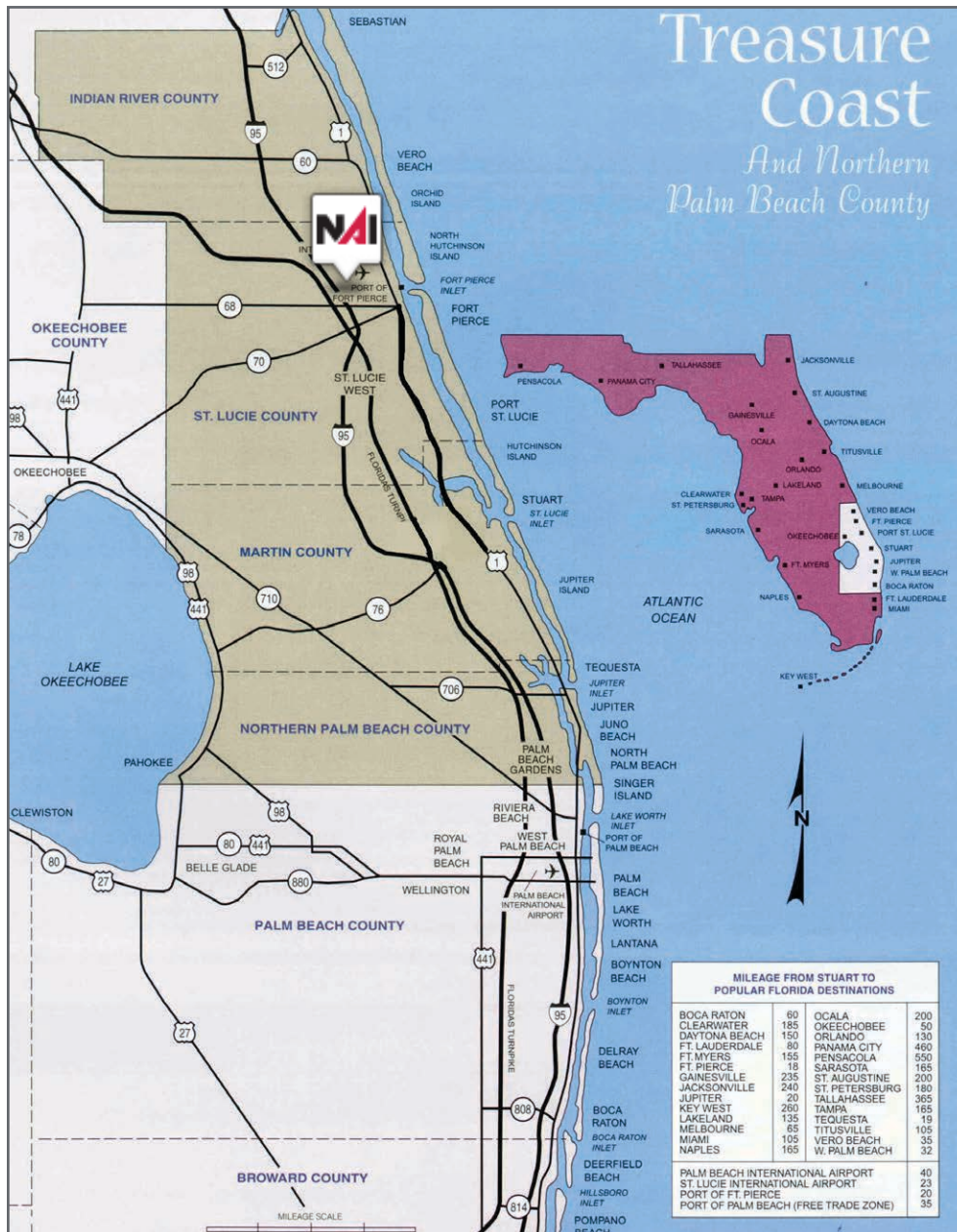
Average Household Income

3 Miles:	\$76,789
5 Miles:	\$66,828
10 Miles:	\$88,853

Median Age

3 Miles:	38.6
5 Miles:	39.1
10 Miles:	46.2





City of Ft. Pierce, Florida

Fort Pierce is famous for being a quaint fishing village, but take a closer look and you will find a treasure trove of activities. As one of the most diverse communities on the Treasure Coast, Fort Pierce has the cultural excitement to rival any “big city” atmosphere. With weekly and monthly events and premier shows at the Sunrise Theatre, visitors never run out of things to do or people to meet.

Fort Pierce is located on the pristine Indian River Lagoon with one of the best all-weather inlets in the state of Florida. Even though Fort Pierce is known for its world class fishing, some visitors would rather take an eco-friendly motorized kayak down the Indian River or dolphin watch on a tour boat. Paddle boarding and horseback riding on unspoiled beaches is also a hit among tourists. Fort Pierce’s natural beauty is world renowned.

Our cultural enhancements include the Zora Neale Hurston Trail, commemorating the noted author and anthropologist who lived her last years in Fort Pierce and the Highwaymen Heritage Trail. The Highwaymen, also referred to as the Florida Highwaymen, are 26 storied, world-renown African American landscape artists who originated in the City of Fort Pierce. Visitors from all over the United States visit Fort Pierce to experience the Highwaymen Heritage Trail, a self-guided engaging and educational experience that recognizes these mostly self-taught landscape artists who have strong local, state, national and international significance.

Museums in Fort Pierce include the newly-enlarged Florida landscape artist A.E. “Beanie” Backus museum and the St. Lucie Regional History Museum, with its satellite Adams Cobb Cultural Museum in the P.P. Cobb Building. Fort Pierce’s most popular tourist attraction, the National UDT Navy SEAL museum, commemorates the birth of the Navy frogmen here in Fort Pierce, and chronicles the evolution of this military unit to today’s Navy SEALs.

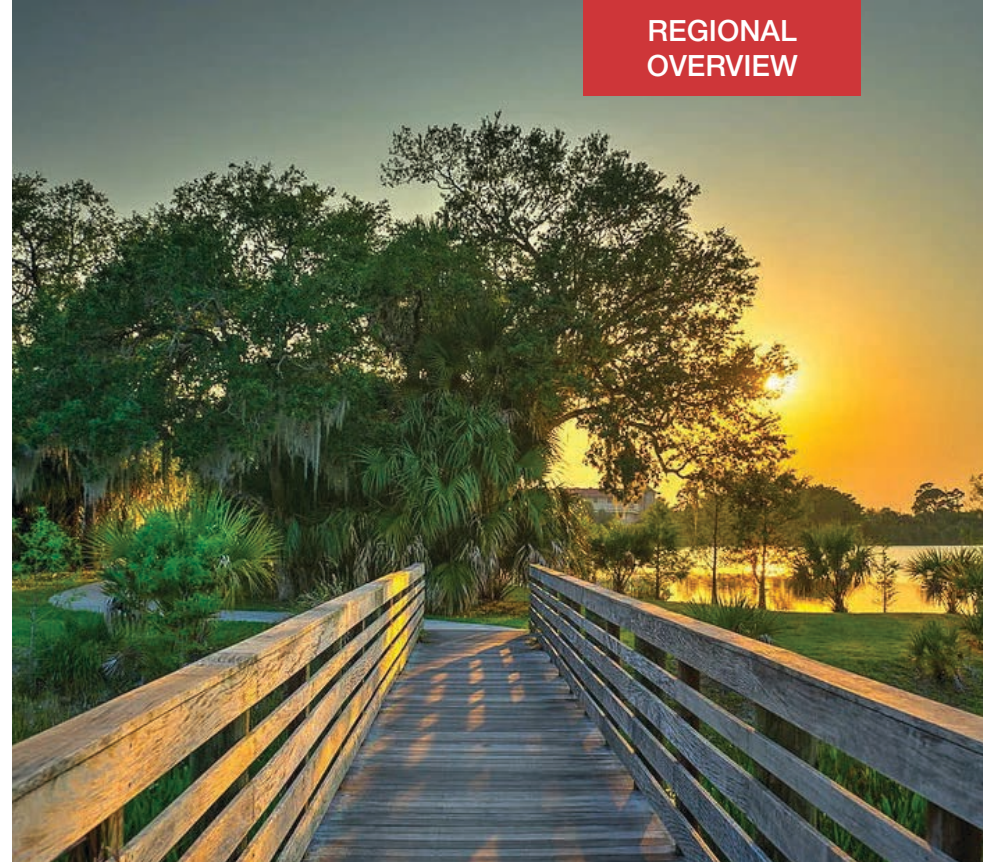
Fort Pierce City Marina is home to the Southern Kingfish Association’s National Championship Fishing Tournament every three years bringing 250-300 fishing teams to Downtown Fort Pierce. SKA has also committed to add Fort Pierce to the tournament’s Pro Tour schedule during the off years.

St. Lucie County, Florida

Extensive, dependable transportation and easy access is the key to growth, and St. Lucie County has both in abundance. Interstate Highway 95 and U.S. Highway 1 provide easy access to the country's east coast, from Key West to Maine. The Florida Turnpike stretches from just south of Miami through northern-central Florida, while State Road 70 runs from U.S. Highway 1 in Fort Pierce west to Bradenton, Florida. St. Lucie County offers a plethora of transportation linkages which include rail, a custom-serviced international airport, and a deep-water port – all of which enable easy access to all St. Lucie County has to offer. The St. Lucie County International Airport is also one of the busiest general aviation airports in the state.

The county has a population of over 375,226 and has experienced growth of over 35% since 2010. The area economy is a blend of emerging life science R&D with traditional manufacturing, agriculture, tourism and services. St. Lucie County's natural resources are enviable, with more than 21 miles of pristine coastline and beaches, coral reefs, more than 20,000 acres of public parks and nature preserves, and miles of rivers and waterways. The area boasts over 20 public and semiprivate courses, with prices ranging from upscale to very affordable, and the great weather allows for play all year round. St. Lucie County is home to Clover Park in Port St. Lucie, the Spring training home of the New York Mets.

The county is host to Indian River State College, an institution that has won national recognition for excellence and innovation applied toward training and education. St. Lucie County boasts 52 schools with a total of 45,661 students and 8,800 staff. The Economic Development Council of St. Lucie County (EDC) is a non-profit organization with the goal of creating more, high-paying jobs for residents by working in concert on agreed upon strategies to promote the retention and expansion of existing businesses, as well as attracting new ones to St. Lucie County. Workers employed in St. Lucie County are clustered in the Health Care and Social Assistance (18.4%), and Retail Trade (11.9%) industries. Workers living in St. Lucie County are concentrated in the Health Care and Social Assistance (16.3%), and Retail Trade (14.1%) industries. Since 2017 the EDC has facilitated 40 expansion and new attraction job creating projects with a net growth of building area of approximately 6,500,000 square feet.



BUILDING 2

4,952 SF

BUILDING 1

7,158 SF

Two Warehouse/Distribution Buildings

7328 & 7332 Commercial Circle, Fort Pierce, FL 34951



Douglas Legler
Principal | Broker Associate
+1 772 405 7778
douglas@naisouthcoast.com



Casey Combs
Broker Associate
+1 772 285 8769
ccombs@naisouthcoast.com

FOR LEASE:
\$14.00/SF NNN

Kings Highway Industrial Park