

# FOR LEASE

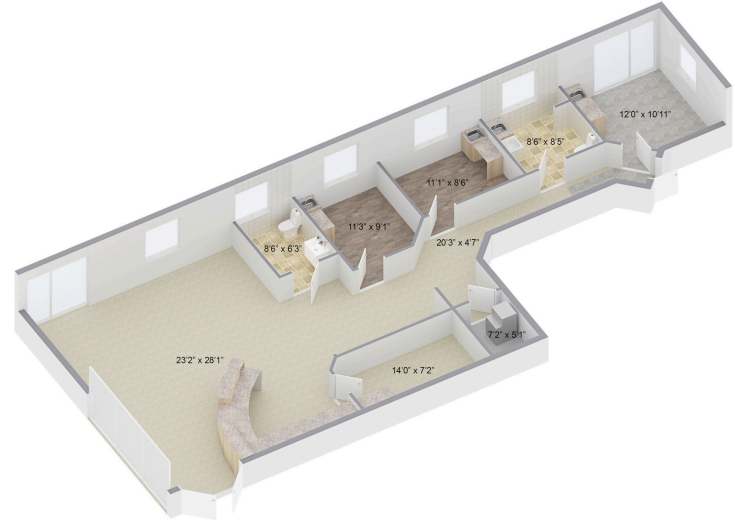
1439 E 23RD ST  
FREMONT, NE 68025

**DODGE**  
COUNTY REALTY GROUP

4% LISTINGS, WHY PAY MORE?



1439 E 23rd St, Fremont, NE 68025



## PROPERTY HIGHLIGHTS:

- Office/Medical Space
- Located on the highly desirable East 23rd corridor
- Features a front desk, large open lobby, two exam rooms/offices, a break room or 3rd office, 2 ADA restrooms, and lots of storage
- Landlord is willing to provide tenant improvement allowance

**ADDRESS:**  
1439 E 23rd St  
Fremont, NE

**SPACE AVAILABLE:**  
1,500SF

**RENT:**  
\$20 Annual/SF plus NNNs

**VIRTUAL TOUR**



Sam Heineman

sheineman@dodgecountyrealtygroup.com

C: (402) 880-4864



WWW.DODGECOUNTYREALTYGROUP.COM