

# OFFICES FOR SALE

4600 N. PARK AVENUE | CHEVY CHASE, MD | 20815



Ground Level – 2,997 S.F.  
\$1,050,000

Plaza Level – 2,556 S.F.  
\$1,150,000

3<sup>rd</sup> Floor – 4,302 S.F.  
\$2,300,000

- ***GARAGE PARKING INCLUDED***
- ***JUST BLOCKS TO METRO***
- ***WALKING DISTANCE TO FRIENDSHIP HEIGHTS RETAIL AND ENTERTAINMENT***



ALEXANDER, MONTROSE, RITTENBERG  
Commercial Real Estate Brokerage  
Est. 1994

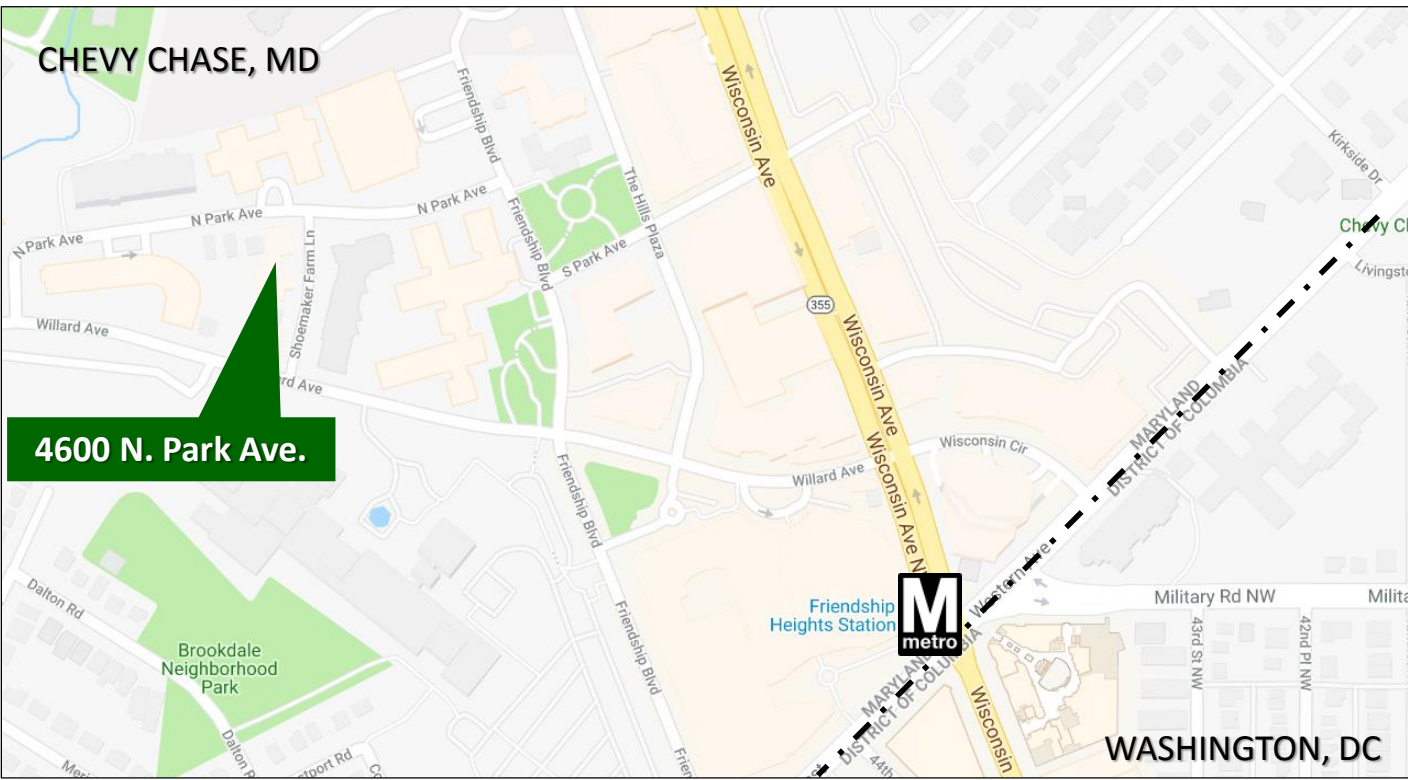
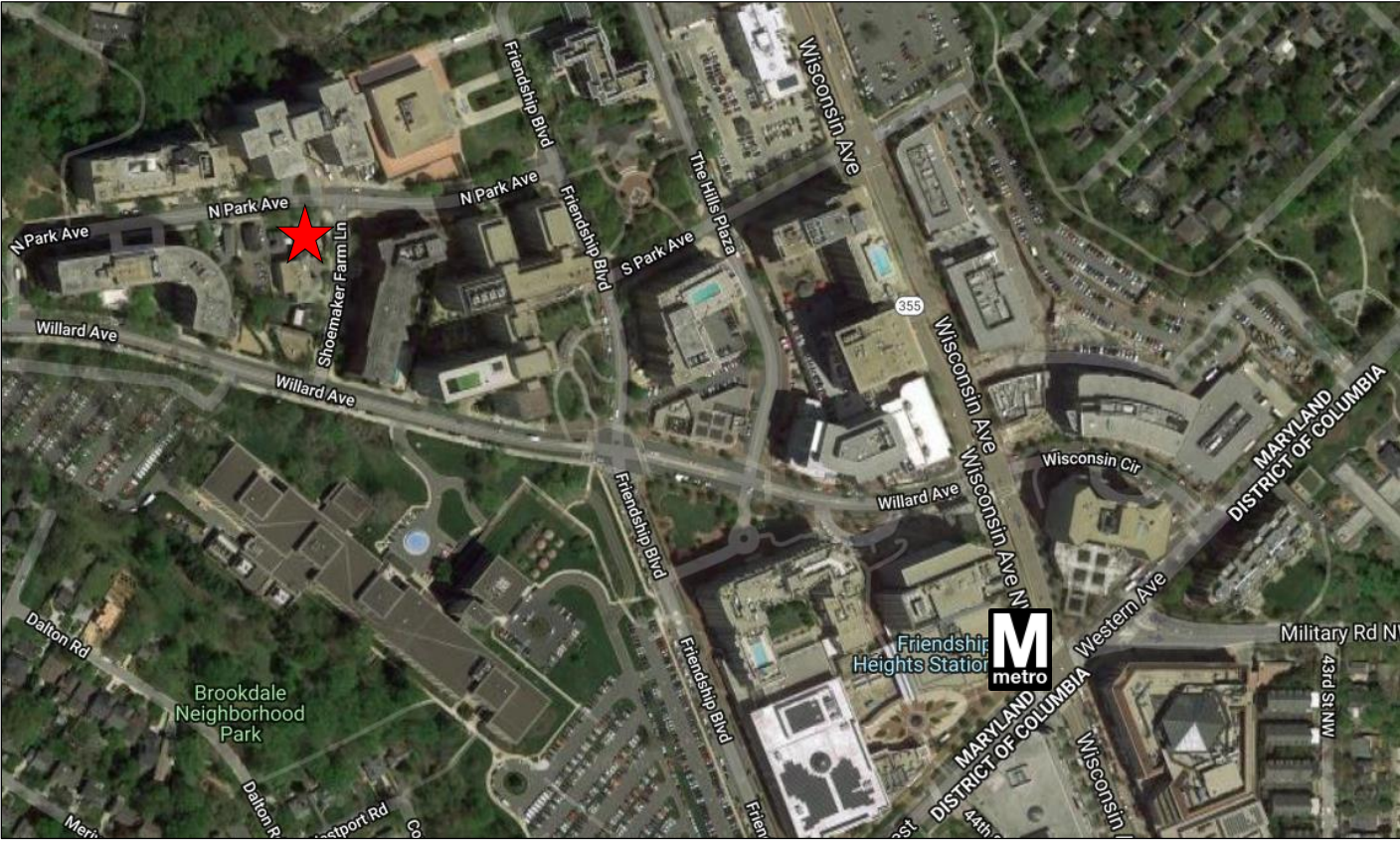
*Celebrating*  
**25**  
*Years*  
1994-2019

A Member of **CORE**  
NETWORK

For More Information  
Please Contact:

**JACK ALEXANDER** | [jalexander@amrcommercial.com](mailto:jalexander@amrcommercial.com) | 301.961.9696 | EXT. 207  
**SAM FARNUM** | [sfarnum@amrcommercial.com](mailto:sfarnum@amrcommercial.com) | 301.961.9696 | EXT. 216





For More Information  
Please Contact:

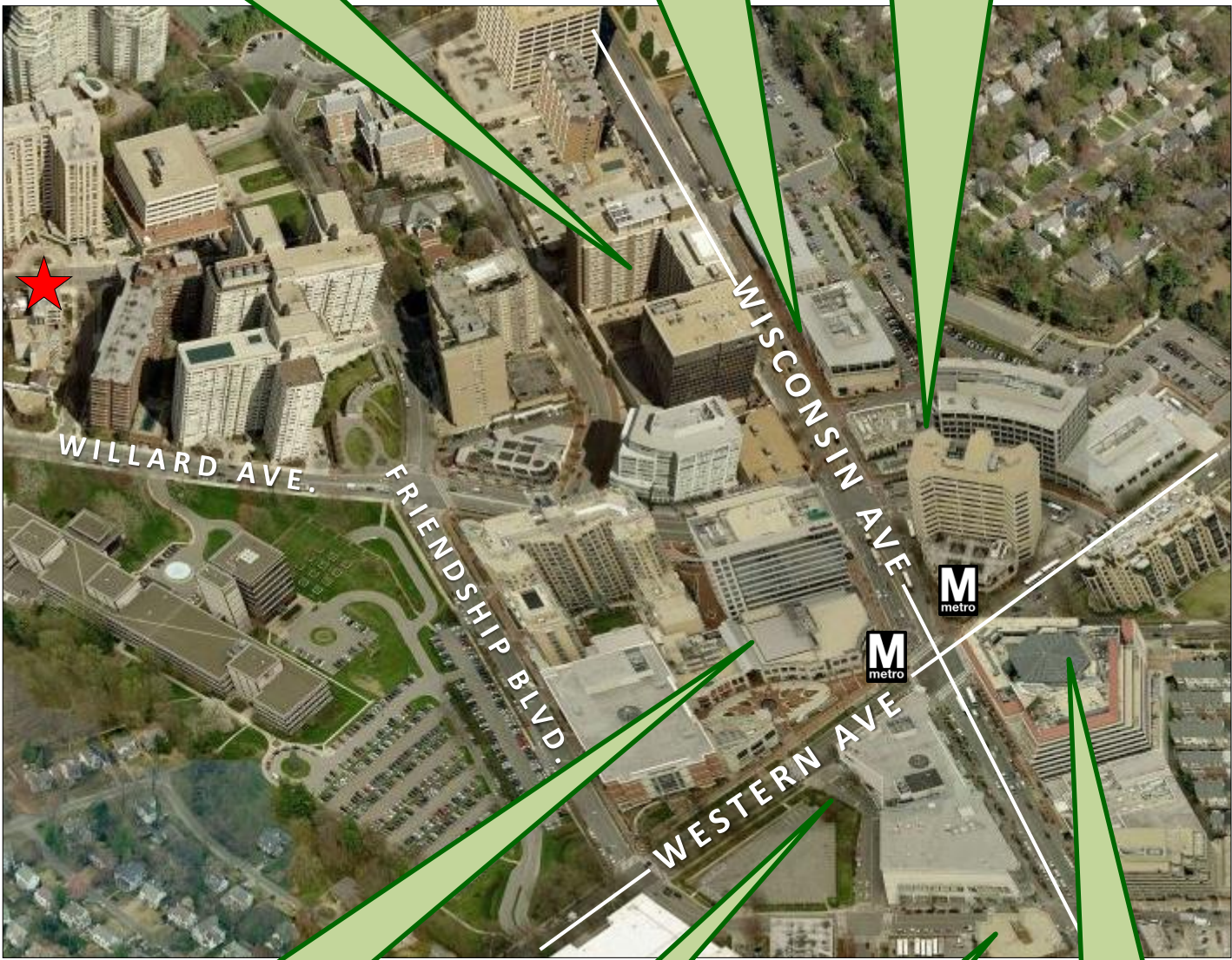
**JACK ALEXANDER** | [jalexander@amrcommercial.com](mailto:jalexander@amrcommercial.com) | 301.961.9696 | EXT. 207  
**SAM FARNUM** | [sfarnum@amrcommercial.com](mailto:sfarnum@amrcommercial.com) | 301.961.9696 | EXT. 216



**EAGLEBANK** We're listening  
**COURTYARD Marriott**  
**BANANA REPUBLIC**  
**GAP** **STARBUCKS COFFEE**  
**Bank of America** **SUN TRUST** *Brooks Brothers*  
**UNITED STATES POSTAL SERVICE** **myerep** **H&R BLOCK**

The Collection at Chevy Chase  
**TIFFANY & Co.** **Cartier**  
**CAPITAL LASER & SKIN CARE** *Arthur Murray*  
**sweet teensy**

Chevy Chase Center  
*chevy chase* **sushiko**  
**FLORIST** **POTOMAC PIZZA** **Giant**  
**luxoptics** **Capital One Bank** **Clyde's** **PAPYRUS**



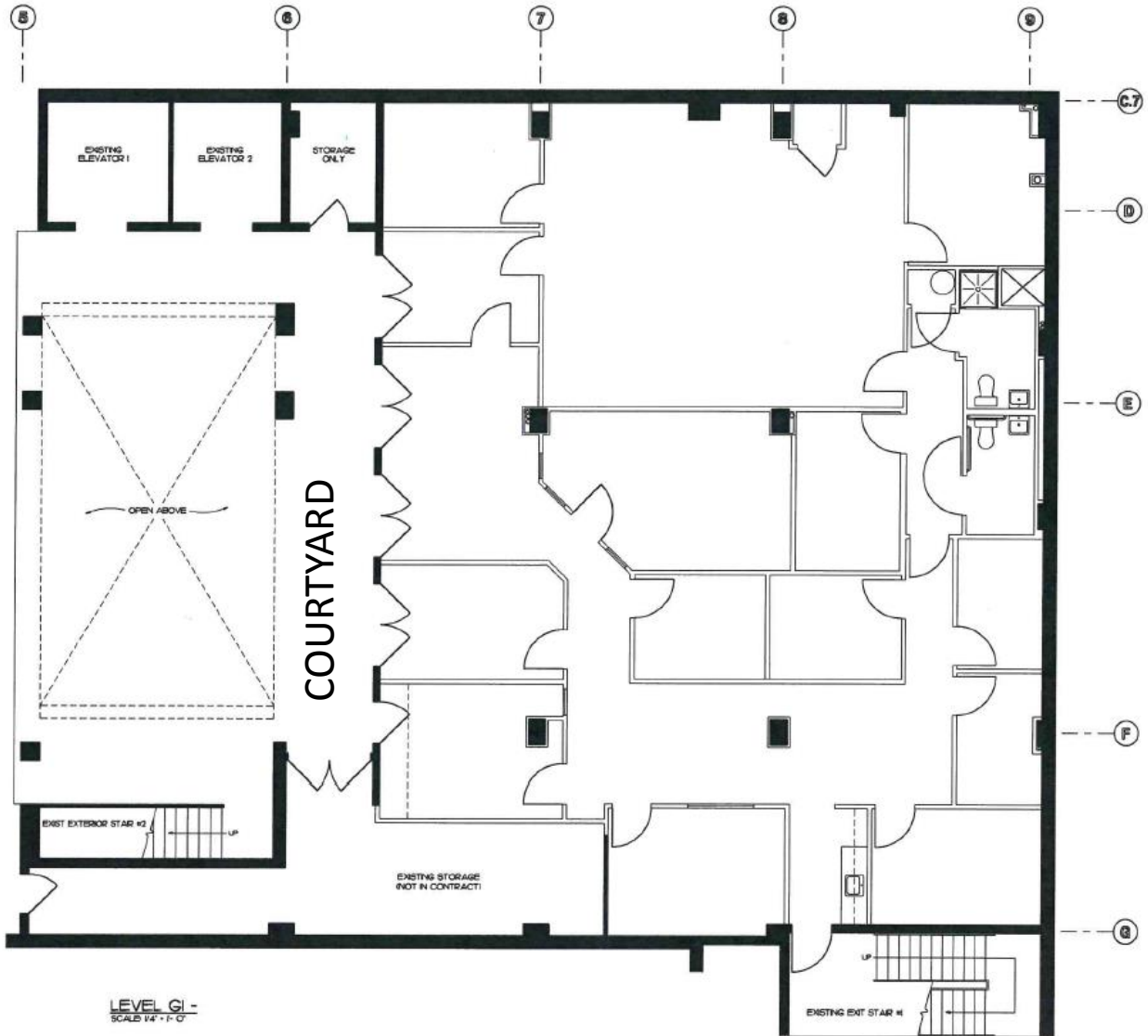
**Shops of Wisconsin Place**  
 bloomingdales **MACYS** **Whole Foods Market** **ILOR**  
**THE CAPITAL GRILL** **talbots** **SEPHORA** **P.F. CHANG'S**  
**Cole Haan** **EILEEN FISHER** **ANTHROPOLOGIC**

**Mazza Gallerie**  
**AMC THEATRES** **T.J. MAXX**  
*Saks Fifth Avenue* **McDonald's** **Neiman Marcus** **SUBWAY**

**Chevy Chase Metro Plaza**  
*Michaels* **verizon** **BookWormer**  
**MATTRESS Warehouse** **COSI**

**Chevy Chase Pavilion**  
**CIVIL ENGINEERING** **J.CREW** **WORLD MARKET** **Starbucks**  
**CVS pharmacy** **T-Mobile**  
**H&M** **EMBASSY SUITES** **Cheesecake Factory** **OLD NAVY**

**Ground Level**  
**Unit G1N**  
**\$1,050,000**  
**2,997 S.F.**  
**11 parking spaces**



ALEXANDER, MONTROSE, RITTENBERG  
Commercial Real Estate Brokerage  
Est. 1994

*Celebrating*  
**25**  
*Years*  
1994-2019

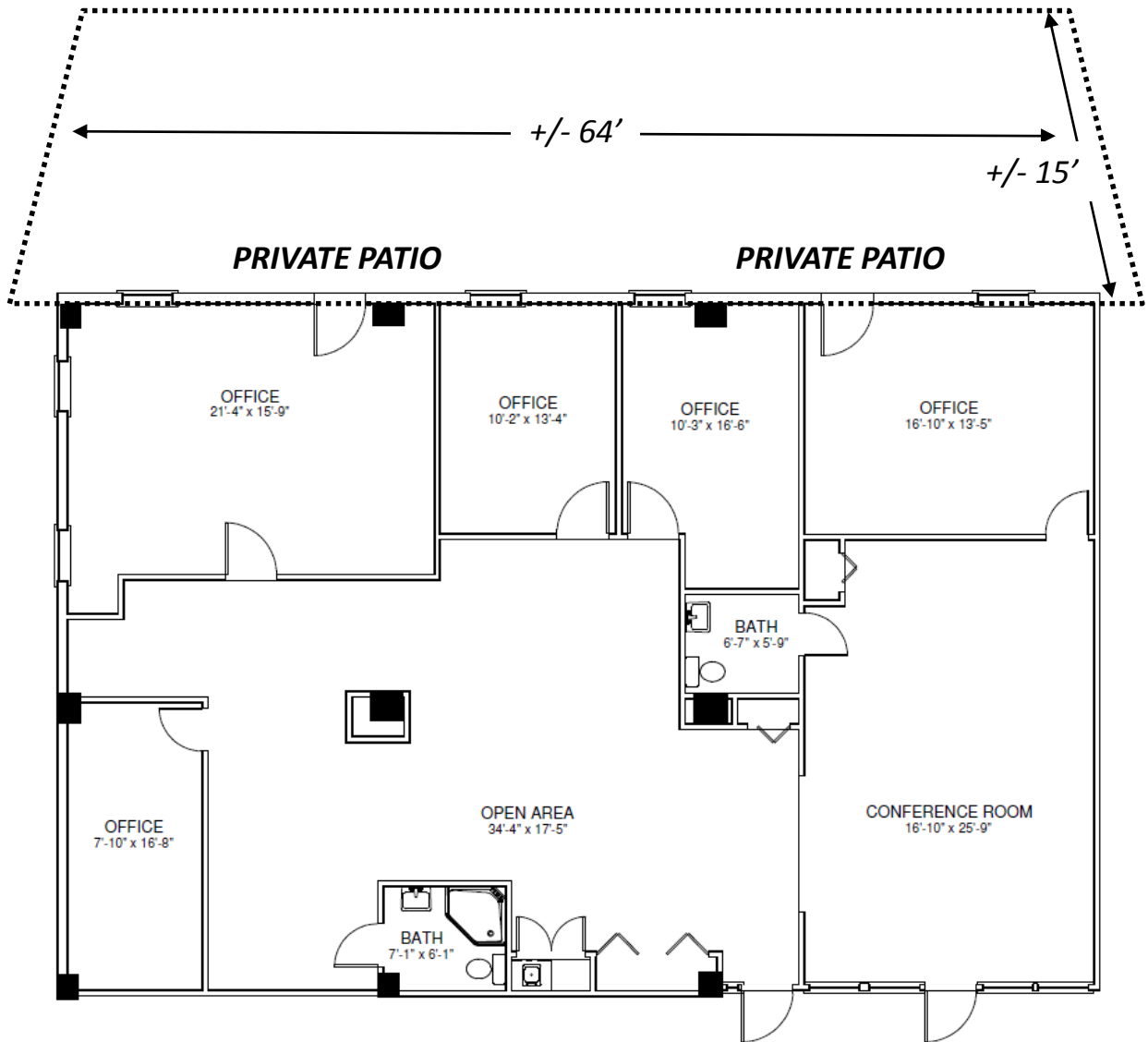
A Member of **CORE**  
NETWORK

For More Information  
Please Contact:

**JACK ALEXANDER** | [jalexander@amrcommercial.com](mailto:jalexander@amrcommercial.com) | 301.961.9696 | EXT. 207  
**SAM FARNUM** | [sfarnum@amrcommercial.com](mailto:sfarnum@amrcommercial.com) | 301.961.9696 | EXT. 216



Plaza Level  
Unit PW  
\$1,150,000  
2,556 S.F.  
6 parking spaces



ALEXANDER, MONTROSE, RITTENBERG  
Commercial Real Estate Brokerage  
Est. 1994

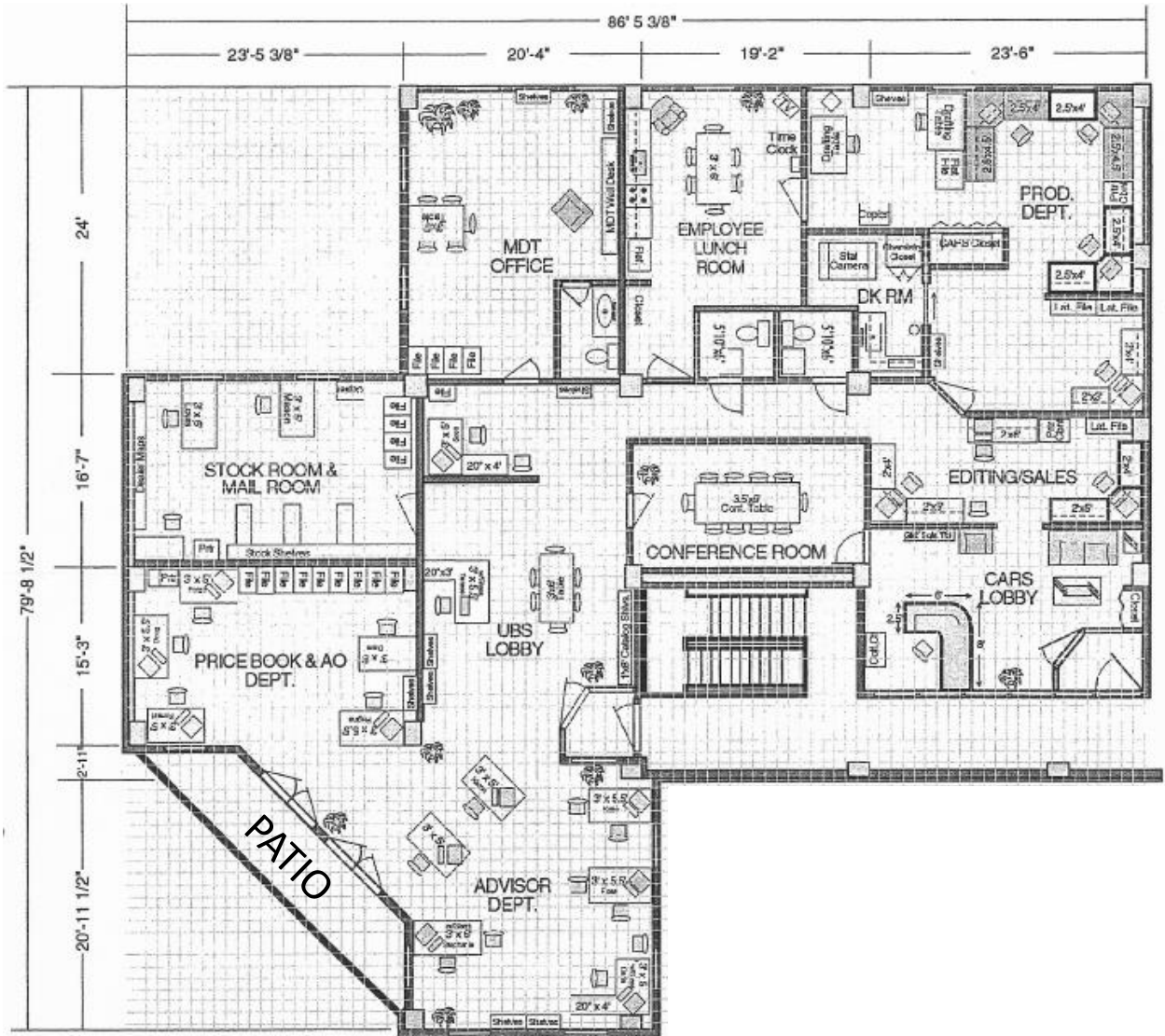
Celebrating  
**25**  
Years  
1994-2019

A Member of **CORE**  
NETWORK

For More Information  
Please Contact:

JACK ALEXANDER | [jalexander@amrcommercial.com](mailto:jalexander@amrcommercial.com) | 301.961.9696 | EXT. 207  
SAM FARNUM | [sfarnum@amrcommercial.com](mailto:sfarnum@amrcommercial.com) | 301.961.9696 | EXT. 216

**3<sup>rd</sup> Floor**  
**Unit 2S & 2W**  
**\$2,300,000**  
**4,302 S.F.**  
**14 parking spaces**



ALEXANDER, MONTROSE, RITTENBERG  
 Commercial Real Estate Brokerage  
 Est. 1994

*Celebrating*  
**25**  
*Years*  
 1994-2019

A Member of **CORE**  
 NETWORK

For More Information  
 Please Contact:

**JACK ALEXANDER** | [jalexander@amrcommercial.com](mailto:jalexander@amrcommercial.com) | 301.961.9696 | EXT. 207  
**SAM FARNUM** | [sfarnum@amrcommercial.com](mailto:sfarnum@amrcommercial.com) | 301.961.9696 | EXT. 216