

# HIGHWAY 50 INDUSTRIAL LAND

RANCHO CORDOVA, CA

±4.17 - ±8.88 ACRES AVAILABLE FOR SALE



**SEAN MAHONEY, SIOR** | Managing Director | 916.569.2328 | sean.mahoney@nrmk.com | CA RE License #01332661  
**KEVIN JASPER, SIOR** | Senior Managing Director | 916.569.2325 | kevin.jasper@nrmk.com | CA RE License #01164925

# HIGHWAY 50 INDUSTRIAL LAND

RANCHO CORDOVA, CA

±4.17 - ±8.88 ACRES AVAILABLE FOR SALE

## PROPERTY HIGHLIGHTS

### 11000 N. MATHER BLVD.

- ±4.71 Acres
- APN: 072-2860-025

### 11020 N. MATHER BLVD.

- ±4.17 Acres
- APN: 072-2860-026
- Zoned LI (ZSPA - Light industrial Zinfandel Special Planning Area)  
Note - City Council is presently considering zoning amendments
- Low impact development fees
- Utilities to site
- Approximately 1.8 miles to Highway 50 at Zinfandel Drive

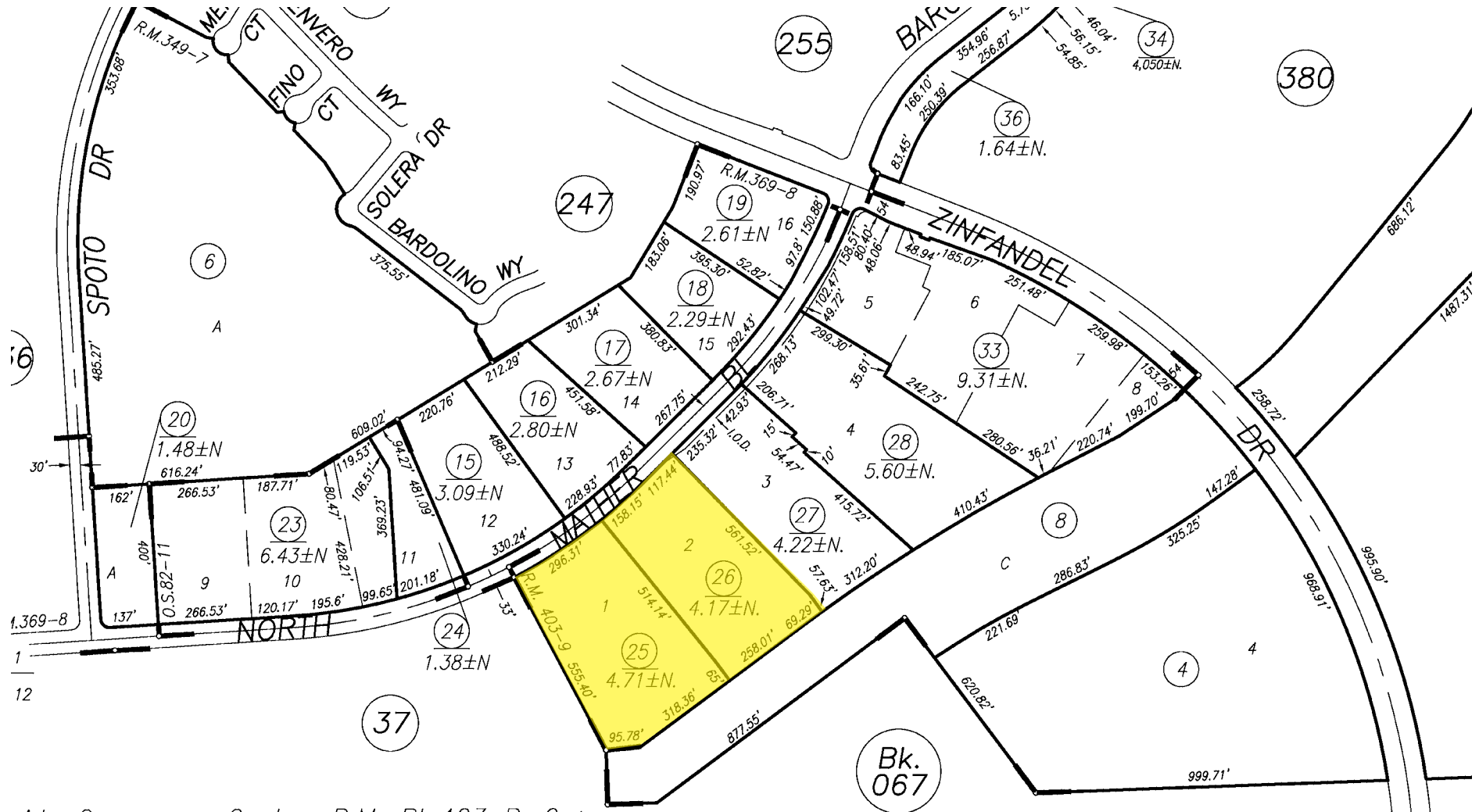


# HIGHWAY 50 INDUSTRIAL LAND

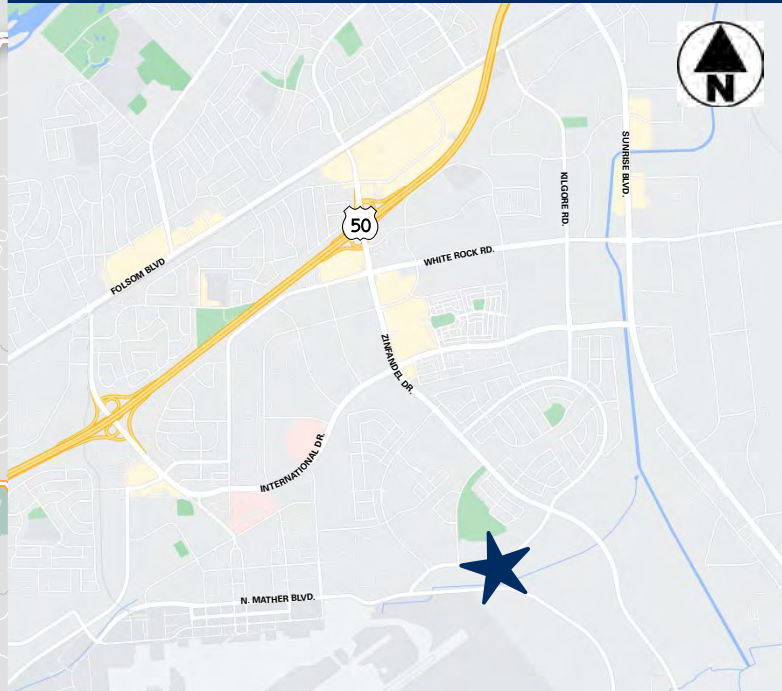
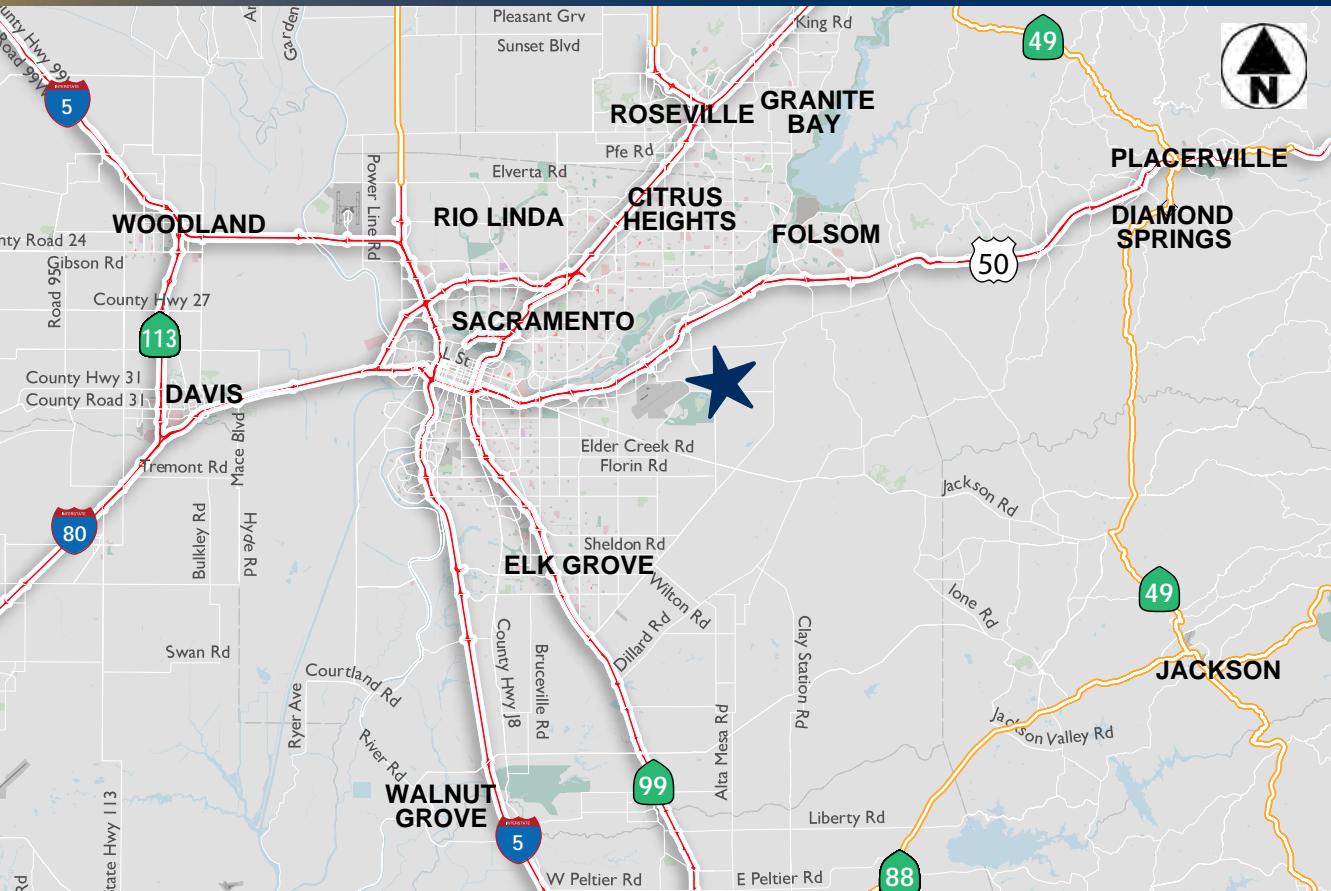
±4.17 - ±8.88 ACRES AVAILABLE FOR SALE

RANCHO CORDOVA, CA

## PARCEL MAP



side Commerce Center, R.M. Bk.403 Pg.9 (8-27-2018)  
d Of Survey, O.S. Bk.82 Pg.11(07-08-2011)  
Stone Creek Phase 1, R.M. Bk.369 Pg.8 (7-5-2007)  
as Of Zinfandel Unit No.10, R.M. Bk.349 Pg.7 (4-7-2006)



**HIGHWAY 50  
INDUSTRIAL LAND**

RANCHO CORDOVA, CA

**SEAN MAHONEY, SIOR** | Managing Director  
916.569.2328

sean.mahoney@nmrk.com

CA RE License #01332661

**KEVIN JASPER, SIOR** | Senior Managing Director  
916.569.2325

kevin.jasper@nmrk.com

CA RE License #01164925



The distributor of this communication is performing acts for which a real estate license is required. The information contained herein has been obtained from sources deemed reliable but has not been verified and no guarantee, warranty or representation, either express or implied, is made with respect to such information. Terms of sale or lease and availability are subject to change or withdrawal without notice. 08/24