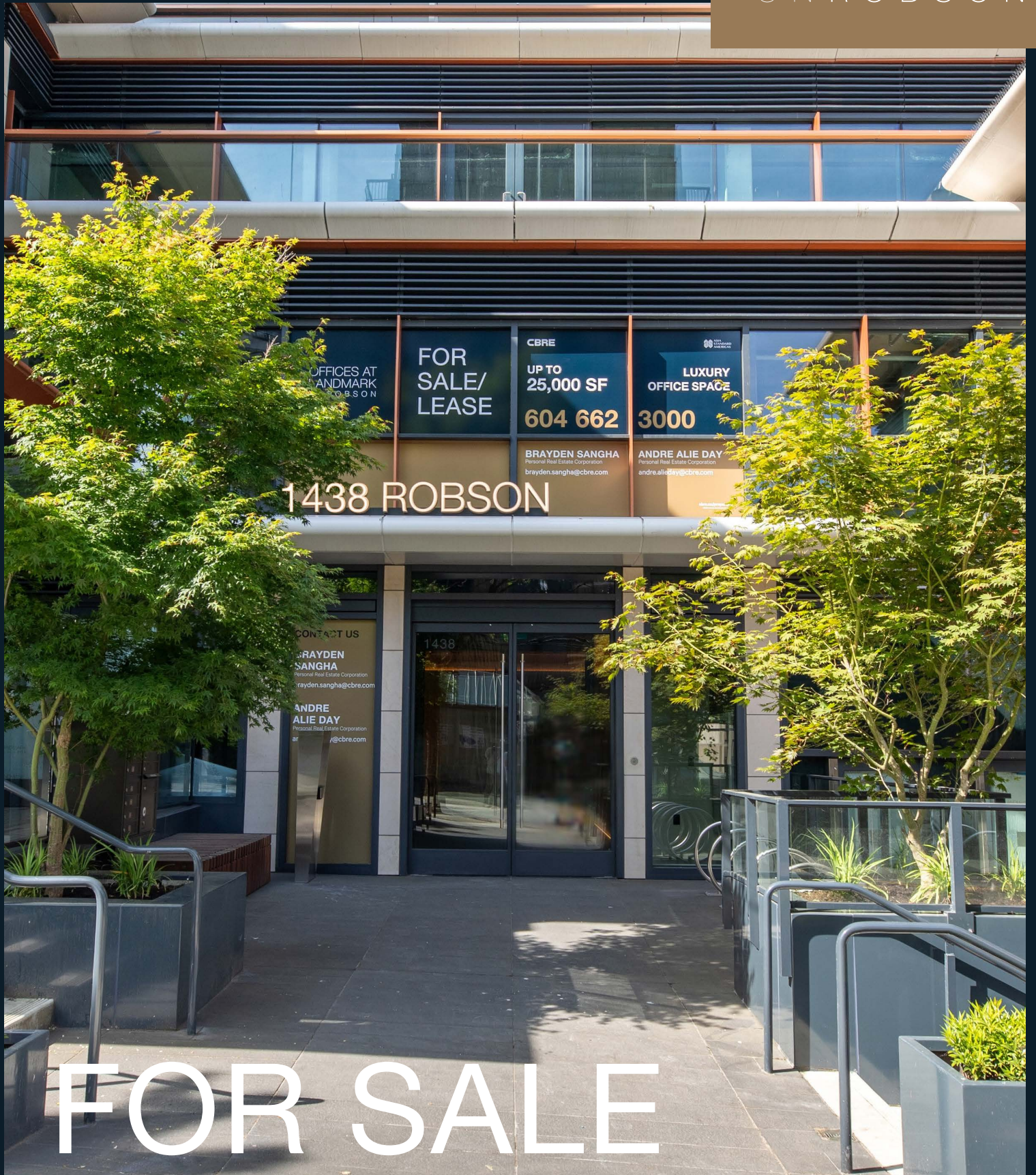


CBRE

**ASIA
STANDARD
AMERICAS**

OFFICES AT
LANDMARK
ON ROBSON



OFFICES AT
LANDMARK
ON ROBSON

**FOR
SALE/
LEASE**

CBRE
**UP TO
25,000 SF**
604 662 3000

**LUXURY
OFFICE SPACE**

1438 ROBSON

CONTACT US
**BRAYDEN
SANGHA**
Personal Real Estate Corporation
braydensangha@cbre.com
**ANDRE
ALIE DAY**
Personal Real Estate Corporation
andre.alie.day@cbre.com

BRAYDEN SANGHA
Personal Real Estate Corporation
braydensangha@cbre.com

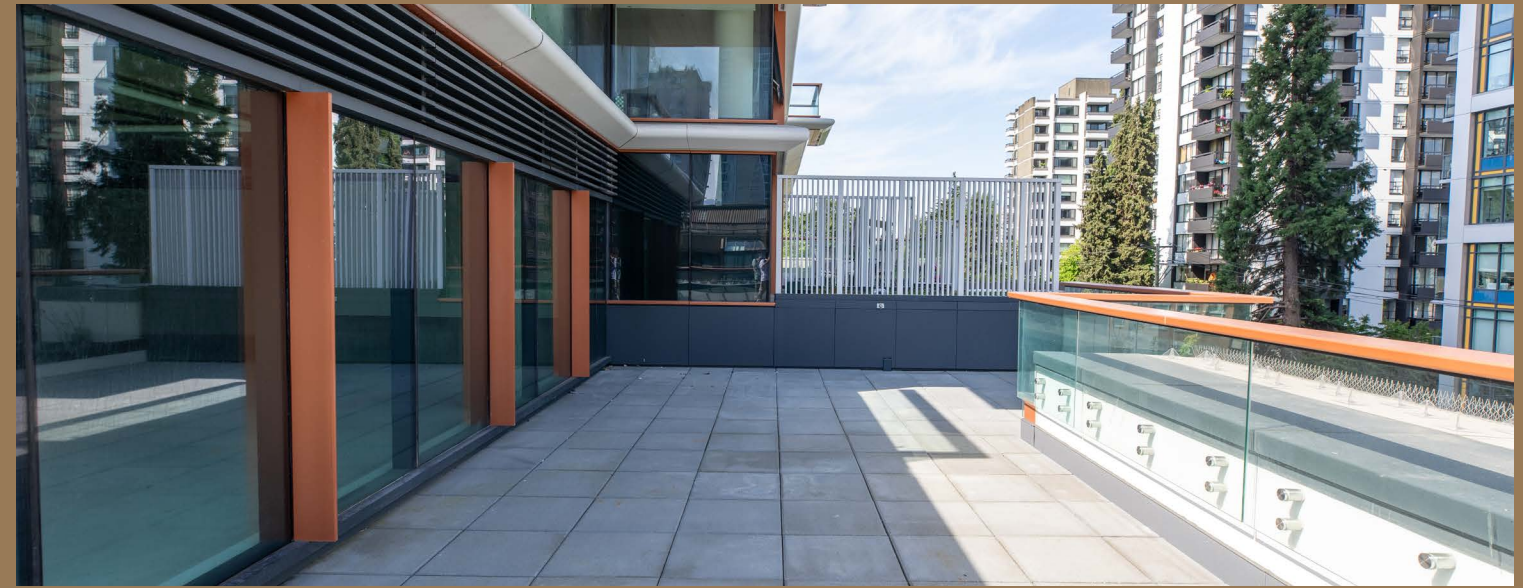
ANDRE ALIE DAY
Personal Real Estate Corporation
andre.alie.day@cbre.com

FOR SALE

1438 ROBSON STREET | VANCOUVER, BC

OFFICES OPPORTUNITY

The Offices at Landmark on Robson provide an unparalleled workspace experience along Vancouver's prestigious Robson Street. This exceptional development, conceived by Asia Standard Americas, boasts two magnificent towers encompassing approximately 470,000 square feet of exquisite residential, office, and retail space. Featuring architectural brilliance by Studio PDP and sophisticated interior design by Atelier Ikebuchi, Landmark on Robson sets a new standard for luxury workspaces in Vancouver. Its prime location, modern design, and top-notch amenities offer a perfect blend of elegance and convenience for professionals and businesses.



PROPERTY DETAILS

OFFICES

All offices feature floor to ceiling windows allowing for ample natural light. Some units of 5th floor feature private patios.

RETAIL

Aisle 24, YunQueen Rice Noodle, Heavenly Desserts, Chaiwala, and Bouquet Café – with more on the way!

AMENITIES

Office owners at Landmark on Robson will benefit from access to underground parking, end of trip facilities, bike storage and office storage units.

RESIDENCES

236 luxury homes with high-end finishes and modern amenities.

PICTURE YOUR NEW OFFICE



LUXURIOUS AND INVITING SEATING AREA

**THE RENDERING DEPICTED REPRESENTS INTENDED AESTHETICS OF THE SPACE.*



OPEN OFFICE WORKSPACE WITH NATURAL LIGHT

**THE RENDERING DEPICTED REPRESENTS INTENDED AESTHETICS OF THE SPACE.*

BUILDING SPECS



PARKING

13 parking stalls available, EV capable parking stalls



HVAC

Distributed on an open plan basis, individual unit tonnage available on request



PATIOS

Private patios on majority of 5th floor units



PLUMBING

Capped cold-water and sanitary drain lines are roughed in to the ceiling and directly to the unit



ELECTRICAL

100 Amp – 3 Phase – 208 Volt service



ZONING

Range of allowable uses including general office and health care office



AMENITIES

Bike storage & lock up, showers and lockers and office storage



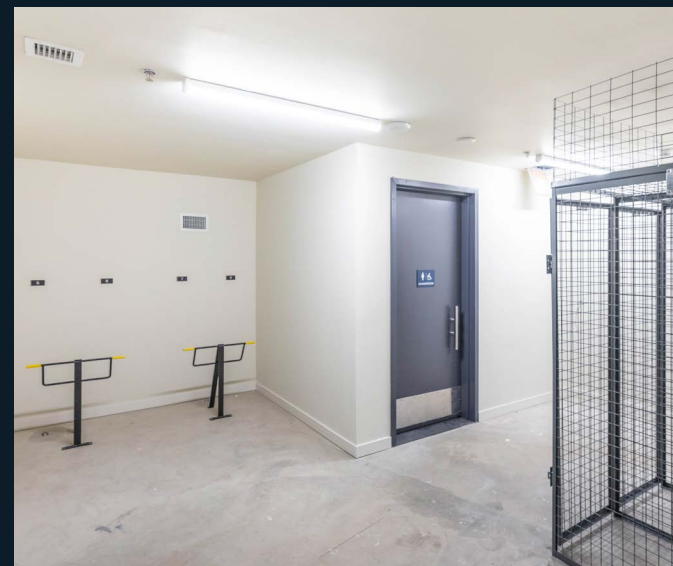
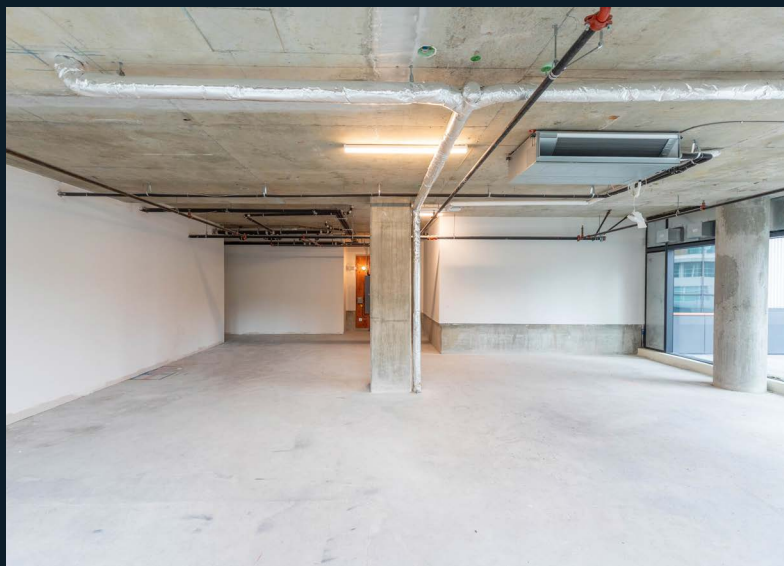
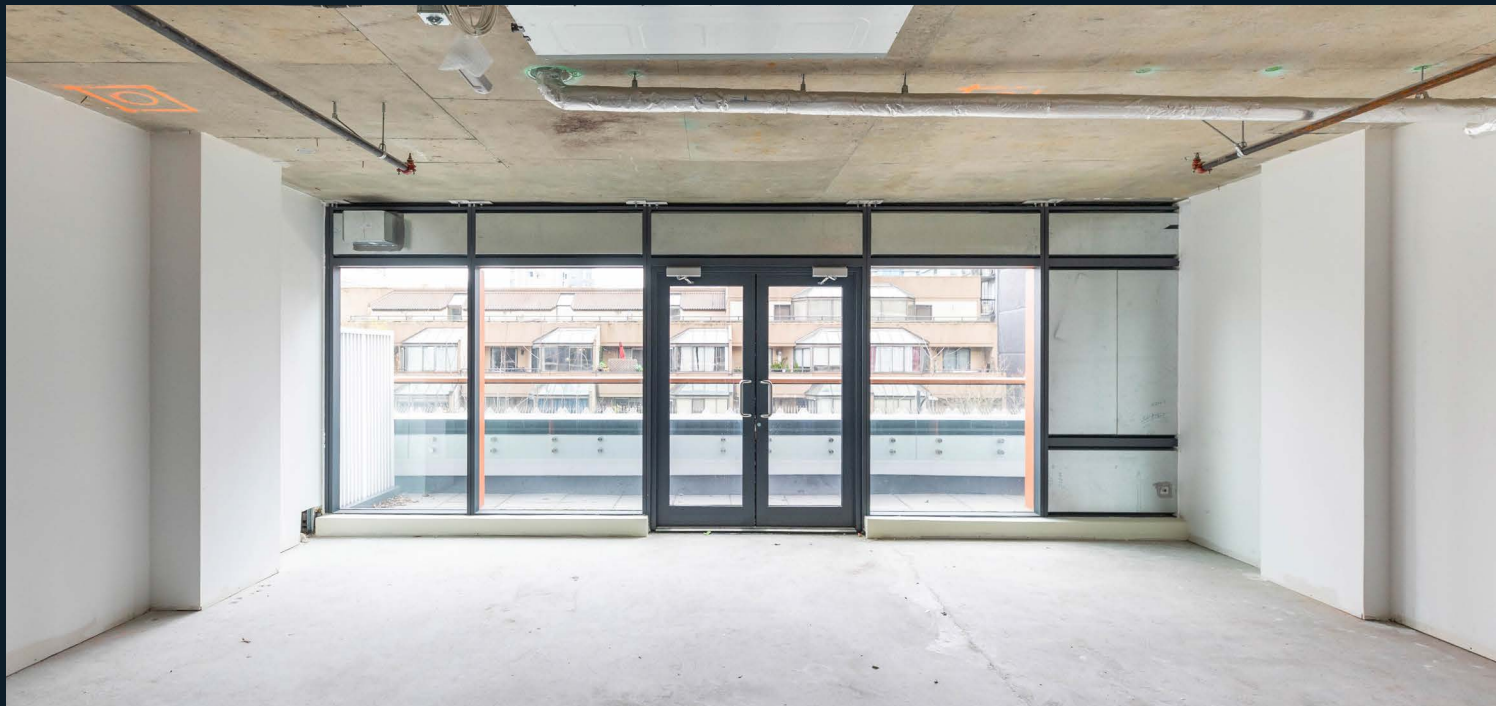
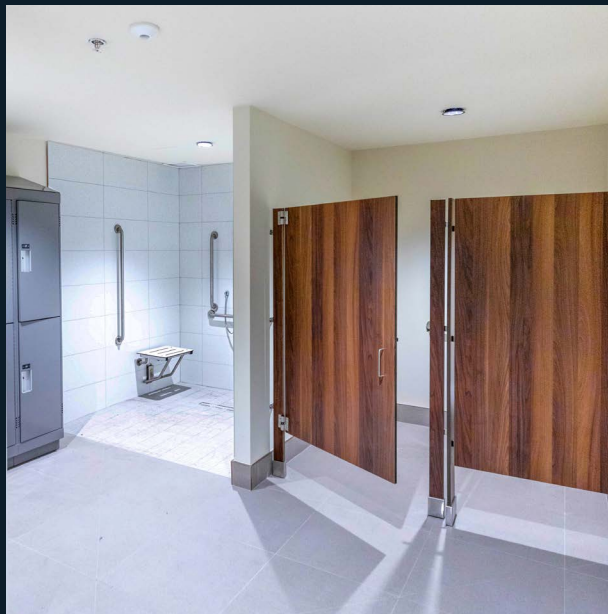
EXCLUSIVE LOBBY & RECEPTION

Furnished lobby with seating area, marble flooring and custom wood panel walls

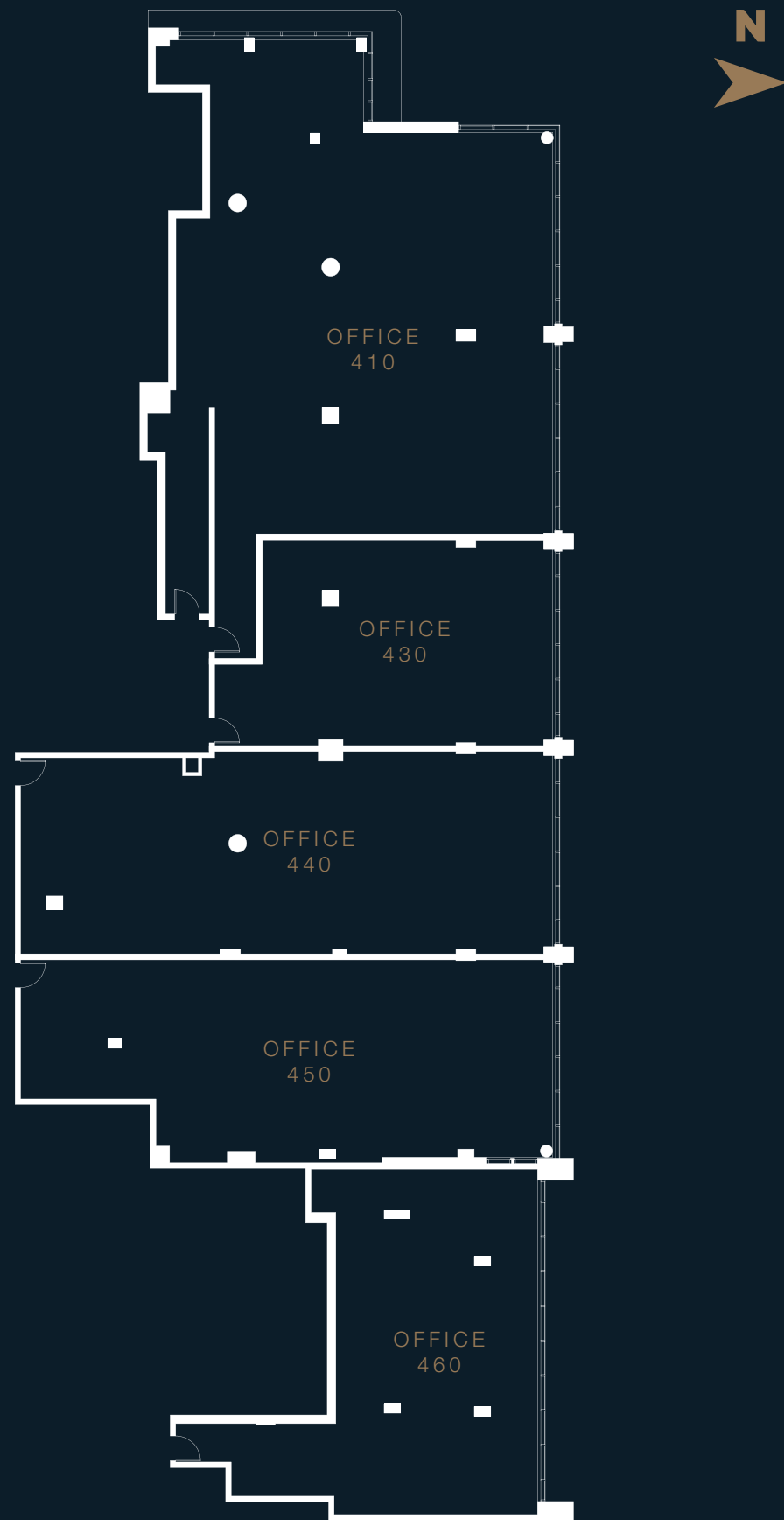


MODERN & CONVENIENT SECURITY

Fob/card access to lobby, elevators, and all office units



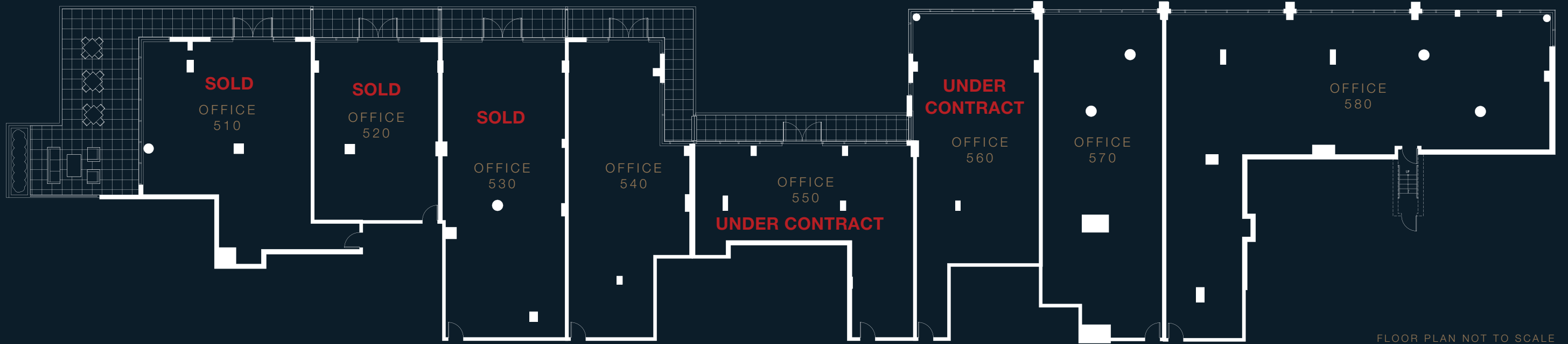
LEVEL 4



OFFICE UNITS BREAKDOWN

OFFICE NUMBER	STRATA AREA	EST. MONTHLY STRATA FEE	PATIO AREA
410	2,771	\$0.92 psf	-
430	984	\$0.92 psf	-
440	1,637	\$0.92 psf	-
450	1,532	\$0.92 psf	-
460	1,279	\$0.92 psf	-

LEVEL 5



FLOOR PLAN NOT TO SCALE

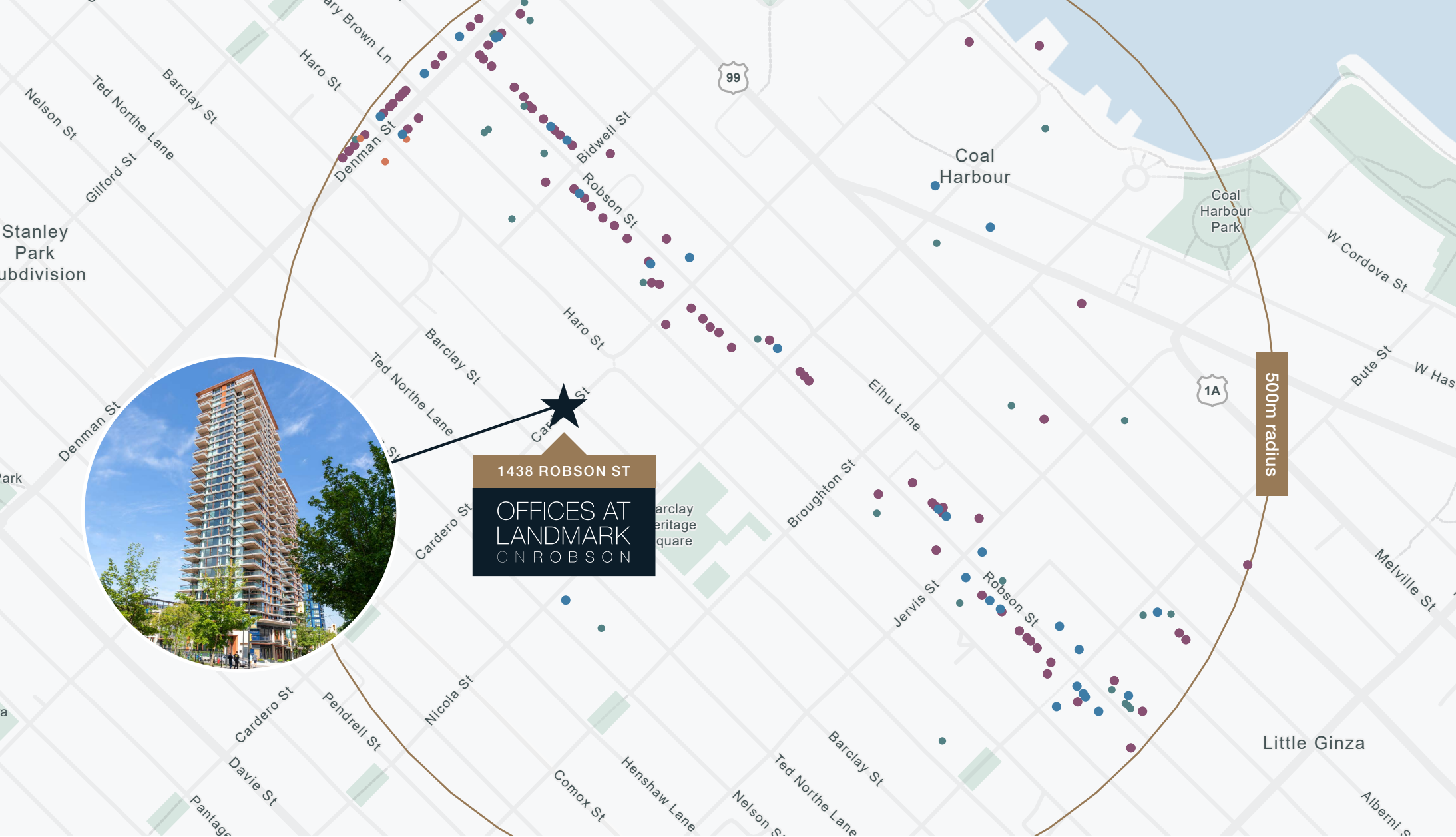
	OFFICE NUMBER	STRATA AREA	EST. MONTHLY STRATA FEE	PATIO AREA
SOLD	510	1,387	\$0.92 psf	851 sf
SOLD	520	944	\$0.92 psf	141 sf
SOLD	530	1,507	\$0.92 psf	139 sf
	540	1,267	\$0.92 psf	255 sf


	OFFICE NUMBER	STRATA AREA	EST. MONTHLY STRATA FEE	PATIO AREA
UNDER CONTRACT	550	1,171	\$0.92 psf	209 sf
UNDER CONTRACT	560	1,419	\$0.92 psf	-
	570	1,546	\$0.92 psf	-
	580	2,826	\$0.92 psf	-

LOCATION

Landmark on Robson is perfectly positioned on the iconic Robson Street, known for its bustling atmosphere and upscale offerings. This prime location places residents within walking distance of high-end boutiques, gourmet restaurants, and cultural landmarks such as the Vancouver Art Gallery.

The West End neighborhood of Vancouver is a dynamic and diverse area, offering a mix of residential, commercial, and recreational spaces. Residents of Landmark on Robson will enjoy proximity to Stanley Park, English Bay, and the vibrant shopping and dining options along Robson Street. The neighborhood is known for its walkability, green spaces, and cultural attractions.



 SeaBus to North Vancouver

 Harbour Air Seaplane Terminal

T NEARBY SKYTRAIN STATION

-  Waterfront Station
-  Granville Station
-  Vancouver City Centre Station
-  Burrard Station
-  Stadium-Chinatown Station

RESTAURANTS 80+

- Joe Fortes Seafood & Chop House
- Hello Nori
- CinCin Ristorante + Bar
- Ramen Danbo
- Sura Korean Royal Cuisine Restaurant
- Saku
- Nom Nom
- Sushi Bar Maumi
- Guu with Garlic
- Hokkaido Ramen Santouka
- Banana Leaf on Robson
- Saku

RETAIL 32+

- CF Pacific Centre
- Roots
- Knix Robson
- Wilfred
- Nike Robson
- Aritzia
- Plenty
- Indigo
- Sephora
- Lululemon
- MUJI Robson Street
- Browns
- Zara
- COS
- Banana Republic

CAFE 30+

- Breka Bakery & Cage - Bute
- 49th Parallel Café & Lucky's
- Doughnuts - Thurlow
- Tim Horton's
- Starbucks

FITNESS 3+

- Equinox West Georgia Street
- Fitness World
- Barry's Vancouver



SHOPPING

High-end brands like Rolex, Burberry, and Tiffany & Co.



RECREATION

Stanley Park, English Bay, and the Vancouver Seawall.



CULTURAL

Vancouver Art Gallery, theaters, and performance venues.



DINING

Renowned restaurants such as Hawksworth and Joe Fortes.

FOR SALE

1438 ROBSON ST

OFFICES AT
LANDMARK
ON ROBSON

CONTACT AGENTS

BRAYDEN SANGHA

Personal Real Estate Corporation

Senior Associate

604 329 8882

brayden.sangha@cbre.com

ANDRE ALIE DAY

Personal Real Estate Corporation

Senior Associate

604 662 5137

andre.alieday@cbre.com



This disclaimer shall apply to CBRE Limited, Real Estate Brokerage, and to all other divisions of the Corporation; to include all employees and independent contractors ("CBRE"). All references to CBRE Limited herein shall be deemed to include CBRE, Inc. The information set out herein, including, without limitation, any projections, images, opinions, assumptions and estimates obtained from third parties (the "Information") has not been verified by CBRE, and CBRE does not represent, warrant or guarantee the accuracy, correctness and completeness of the Information. CBRE does not accept or assume any responsibility or liability, direct or consequential, for the Information or the recipient's reliance upon the Information. The recipient of the Information should take such steps as the recipient may deem necessary to verify the Information prior to placing any reliance upon the Information. The Information may change and any property described in the Information may be withdrawn from the market at any time without notice or obligation to the recipient from CBRE. CBRE and the CBRE logo are the service marks of CBRE Limited and/or its affiliated or related companies in other countries. All other marks displayed on this document are the property of their respective owners. All Rights Reserved.

Mapping Sources: Canadian Mapping Services canadamapping@cbre.com; DMTI Spatial, Environics Analytics, Microsoft Bing, Google Earth.

www.cbre.ca/vancouver

CBRE Limited
1021 West Hastings Street #2500, Vancouver, BC www.cbre.ca