

# FOR LEASE • EXECUTIVE SUITES

1200 E. ORANGEBURG • MODESTO • CA • 95350-4656



*The information contained herein is deemed reliable, but is not guaranteed. To discuss this property or any other commercial need, please contact:*

**HIGH  
PRICE &  
LEFFLER**  
ASSOCIATES

**PMZ COMMERCIAL**  
SINCE 1957 REAL ESTATE

**RANDY HIGH JR., CCIM**  
CalBRE Lic. No. 01238404  
209.491.3413 | rhigh@pmz.com

**DANNY PRICE**  
CalBRE Lic. No. 01895497  
209.491.3415 | dprice@pmz.com

**DESIREE HOLLAND**  
Administrative & Marketing Assistant  
209.672.6792 | des@pmz.com



# PROPERTY SUMMARY

<b>ADDRESS:</b>	1200 E. Orangeburg Ave • Suite 201	<b>COUNTY:</b>	Stanislaus County
<b>LEASE RATE:</b>	\$1,000 Per Month MG	<b>PROPERTY TYPE:</b>	Commercial Office
<b>AVAILABLE SIZE:</b>	± SF	<b>PARCEL NUMBER:</b>	031-024-032
<b>LOT SIZE (SF/AC):</b>	± 30,491 SF / ± 0.07 AC	<b>PROCURING BROKER FEE:</b>	2.5%

## PROPERTY DESCRIPTION:

Located at 1200 E. Orangeburg Avenue in Modesto, this prime commercial real estate property offers an excellent opportunity for businesses seeking visibility and accessibility in a highly desirable area. Now featuring Executive Suites. With close proximity to major thoroughfares and high-traffic zones, it's perfectly positioned to attract a steady flow of customers and clients. The property boasts ample parking, modern facilities, and flexible spaces that can accommodate a variety of commercial uses. Surrounded by well-established businesses and residential neighborhoods, this location provides a unique blend of convenience and community presence. Whether you're looking to expand or establish a new presence, 1200 E. Orangeburg Avenue offers the ideal space to grow your business in Modesto's thriving commercial landscape.

## FEATURES:

- Ten (10) Individual Executive Suites Available
- Nine (9) Individual Cubicles Available
- Kitchenette
- Shared Restroom



*The information contained herein is deemed reliable, but is not guaranteed. To discuss this property or any other commercial need, please contact:*

**HIGH  
PRICE &  
LEFFLER**  
ASSOCIATES

**PMZ COMMERCIAL**  
SINCE 1957 REAL ESTATE

**RANDY HIGH JR., CCIM**  
CalBRE Lic. No. 01238404  
209.491.3413 | rhigh@pmz.com

**DANNY PRICE**  
CalBRE Lic. No. 01895497  
209.491.3415 | dprice@pmz.com

**DESIREE HOLLAND**  
Administrative & Marketing Assistant  
209.672.6792 | des@pmz.com

# PHOTO GALLERY



*The information contained herein is deemed reliable, but is not guaranteed. To discuss this property or any other commercial need, please contact:*

**HIGH  
PRICE &  
LEFFLER**  
ASSOCIATES

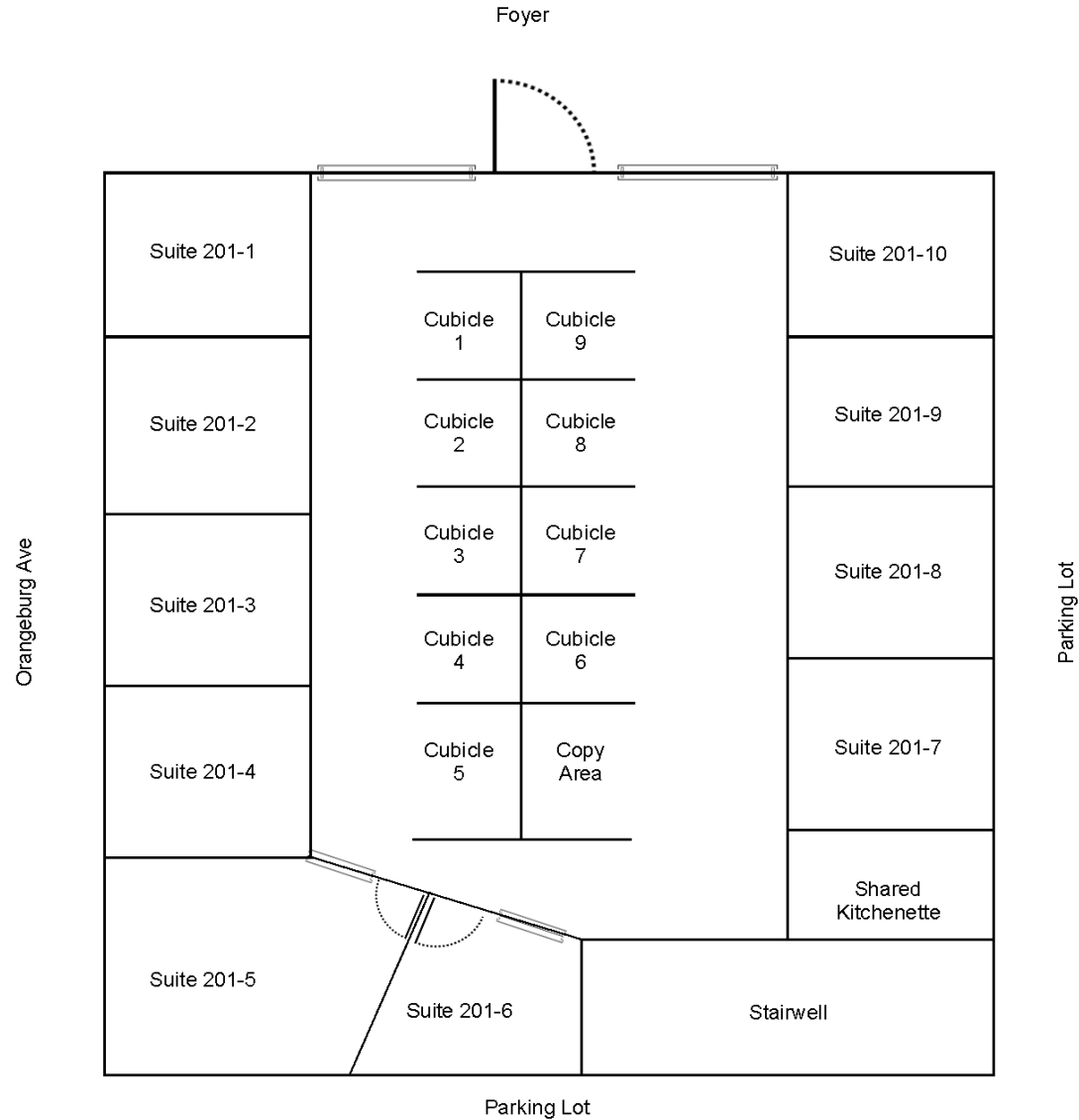
**PMZ COMMERCIAL**  
SINCE 1957 REAL ESTATE

**RANDY HIGH JR., CCIM**  
CalBRE Lic. No. 01238404  
209.491.3413 | rhigh@pmz.com

**DANNY PRICE**  
CalBRE Lic. No. 01895497  
209.491.3415 | dprice@pmz.com

**DESIREE HOLLAND**  
Administrative & Marketing Assistant  
209.672.6792 | des@pmz.com

# FLOOR PLAN



*The information contained herein is deemed reliable, but is not guaranteed. To discuss this property or any other commercial need, please contact:*

**HIGH  
PRICE &  
LEFFLER**  
ASSOCIATES

**PMZ COMMERCIAL**  
SINCE 1957 REAL ESTATE

**RANDY HIGH JR., CCIM**  
CalBRE Lic. No. 01238404  
209.491.3413 | rhigh@pmz.com

**DANNY PRICE**  
CalBRE Lic. No. 01895497  
209.491.3415 | dprice@pmz.com

**DESIREE HOLLAND**  
Administrative & Marketing Assistant  
209.672.6792 | des@pmz.com



# LOCATION MAP



The information contained herein is deemed reliable, but is not guaranteed. To discuss this property or any other commercial need, please contact:

**HIGH  
PRICE &  
LEFFLER**  
ASSOCIATES

**PMZ COMMERCIAL**  
SINCE 1957 REAL ESTATE

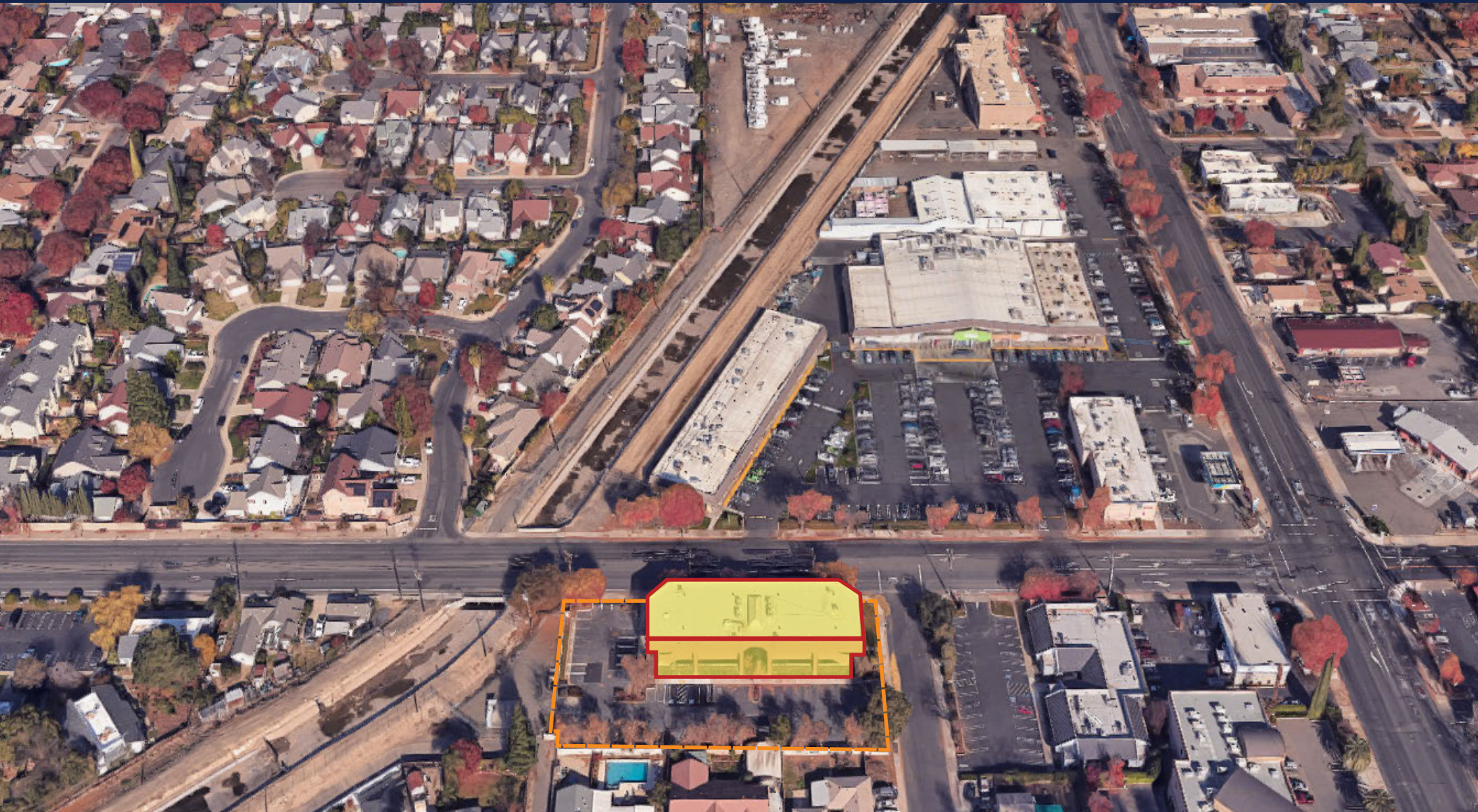
**RANDY HIGH JR., CCIM**  
CalBRE Lic. No. 01238404  
209.491.3413 | rhigh@pmz.com

**DANNY PRICE**  
CalBRE Lic. No. 01895497  
209.491.3415 | dprice@pmz.com

**DESIREE HOLLAND**  
Administrative & Marketing Assistant  
209.672.6792 | des@pmz.com



# AERIAL VIEW



*The information contained herein is deemed reliable, but is not guaranteed. To discuss this property or any other commercial need, please contact:*

**HIGH  
PRICE &  
LEFFLER**  
ASSOCIATES

**PMZ COMMERCIAL**  
SINCE 1957 REAL ESTATE

**RANDY HIGH JR., CCIM**  
CalBRE Lic. No. 01238404  
209.491.3413 | rhigh@pmz.com

**DANNY PRICE**  
CalBRE Lic. No. 01895497  
209.491.3415 | dprice@pmz.com

**DESIREE HOLLAND**  
Administrative & Marketing Assistant  
209.672.6792 | des@pmz.com



**DESIREE HOLLAND**  
Administrative & Marketing Assistant  
209.672.6792 | des@pmz.com