



WATCH

Concierge-style
help managing your
health plan. Free.
Because "existing"
is apparently
a pre-existing condition.

impacthealth

240 STOCKTON SAN FRANCISCO

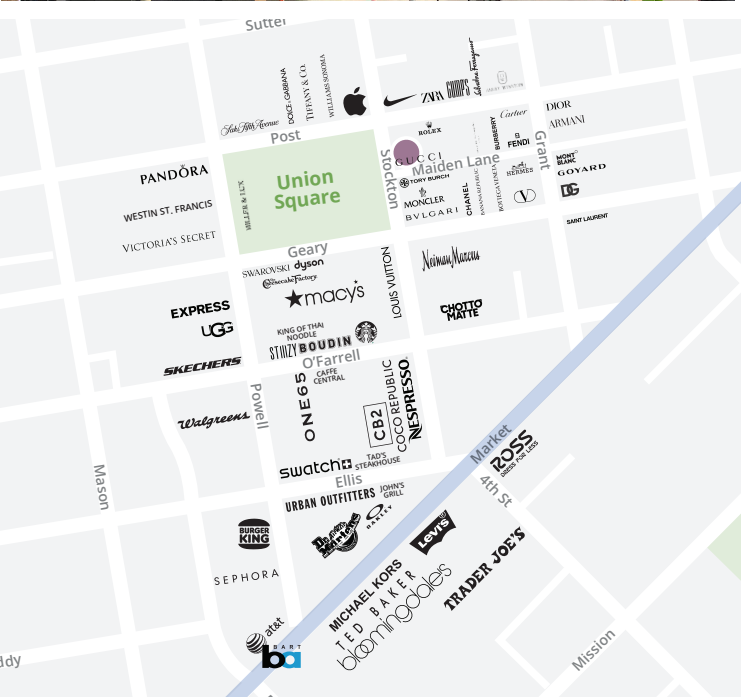
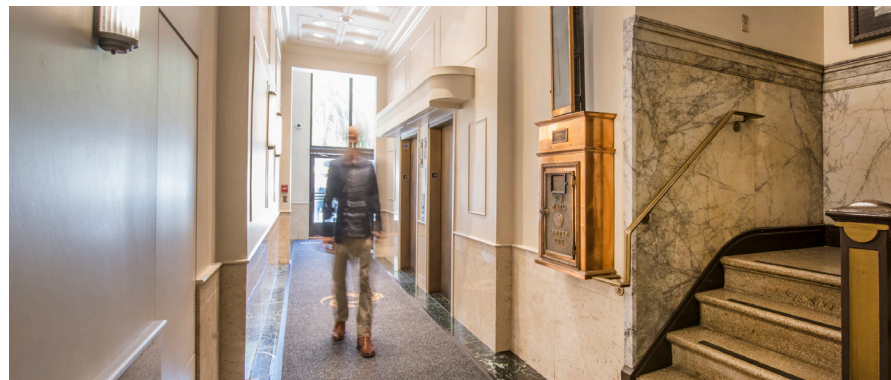
BEVAND

PASTICCERI

GELATI

240 STOCKTON SAN FRANCISCO

- Efficient, full-floor suites that enhance brand identity
- Located in vibrant Union Square, one of the world's premier shopping destinations
- Full HVAC and operable windows



AVISON YOUNG

For leasing inquiries, please contact:

Kelly Glass
+1 415 322 5062
kelly.glass@avisonyoung.com
Lic #01335179

William O'Daly
+1 415 322 5053
will.odaly@avisonyoung.com
Lic #02063132

Melinda Ta
+1 415 301 3182
melinda.ta@avisonyoung.com
Lic #01937218



Proudly owned by:

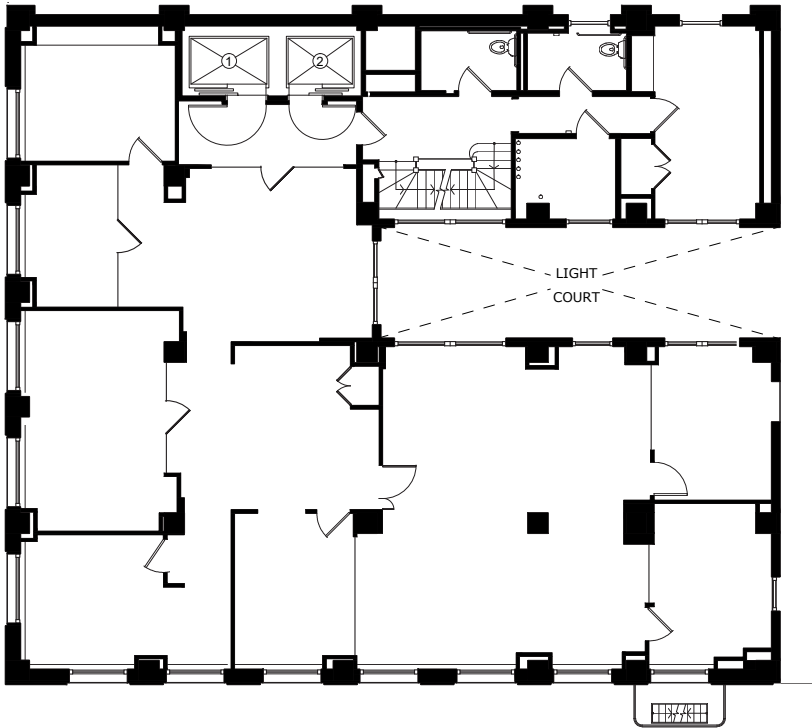


© 2025 Avison Young - Northern California, Ltd. All rights reserved. E. & O.E.: The information contained herein was obtained from sources which we deem reliable and, while thought to be correct, is not guaranteed by Avison Young.

10th Floor

3,692 rsf | available now

240
STOCKTON
SAN FRANCISCO



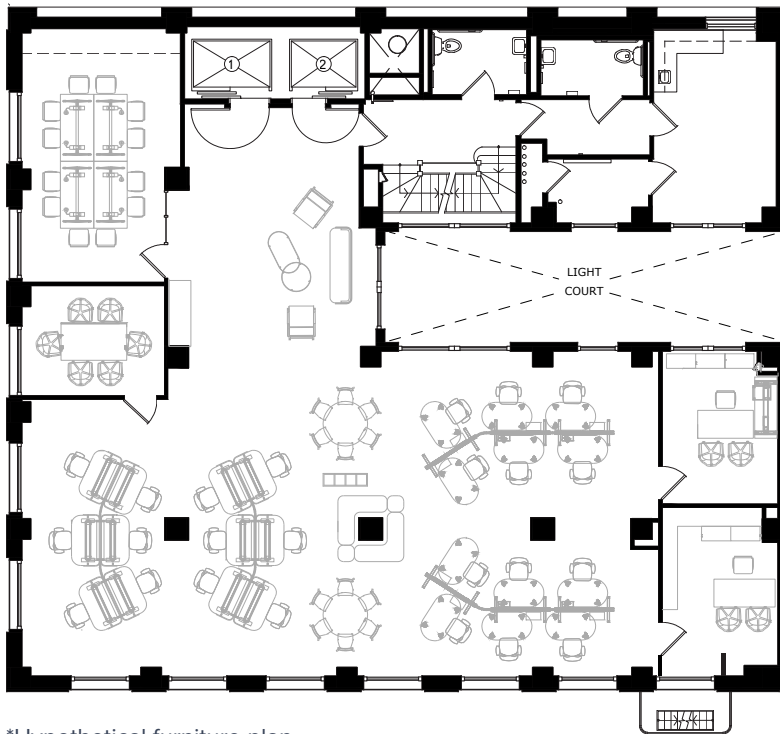
The best views of Union Square

- Premium top floor view space
- Full floor identity
- 5 private offices
- 2 conference rooms
- Open area for workstations
- Kitchen
- Abundant natural light
- Full HVAC
- Operable windows



5th Floor

3,692 rsf | available now



Ready to occupy

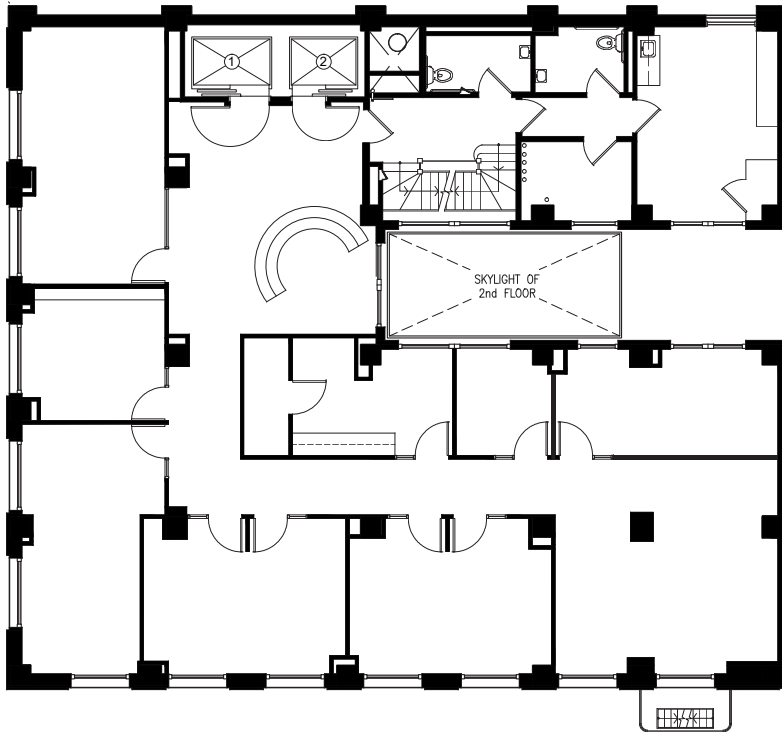
- New finishes throughout
- Full floor identity
- Large conference room
- 3 offices / flex rooms
- Kitchen
- Abundant natural light
- Full HVAC
- Operable windows
- Views of Union Square

*Hypothetical furniture plan



3rd Floor

3,692 rsf | available now



Ideal space for professional services

- Full Floor identity
- 3 large conference rooms
- 2 medium conference rooms
- 2 private offices
- Production room
- Kitchen
- Abundant natural light
- Full HVAC
- Operable windows

