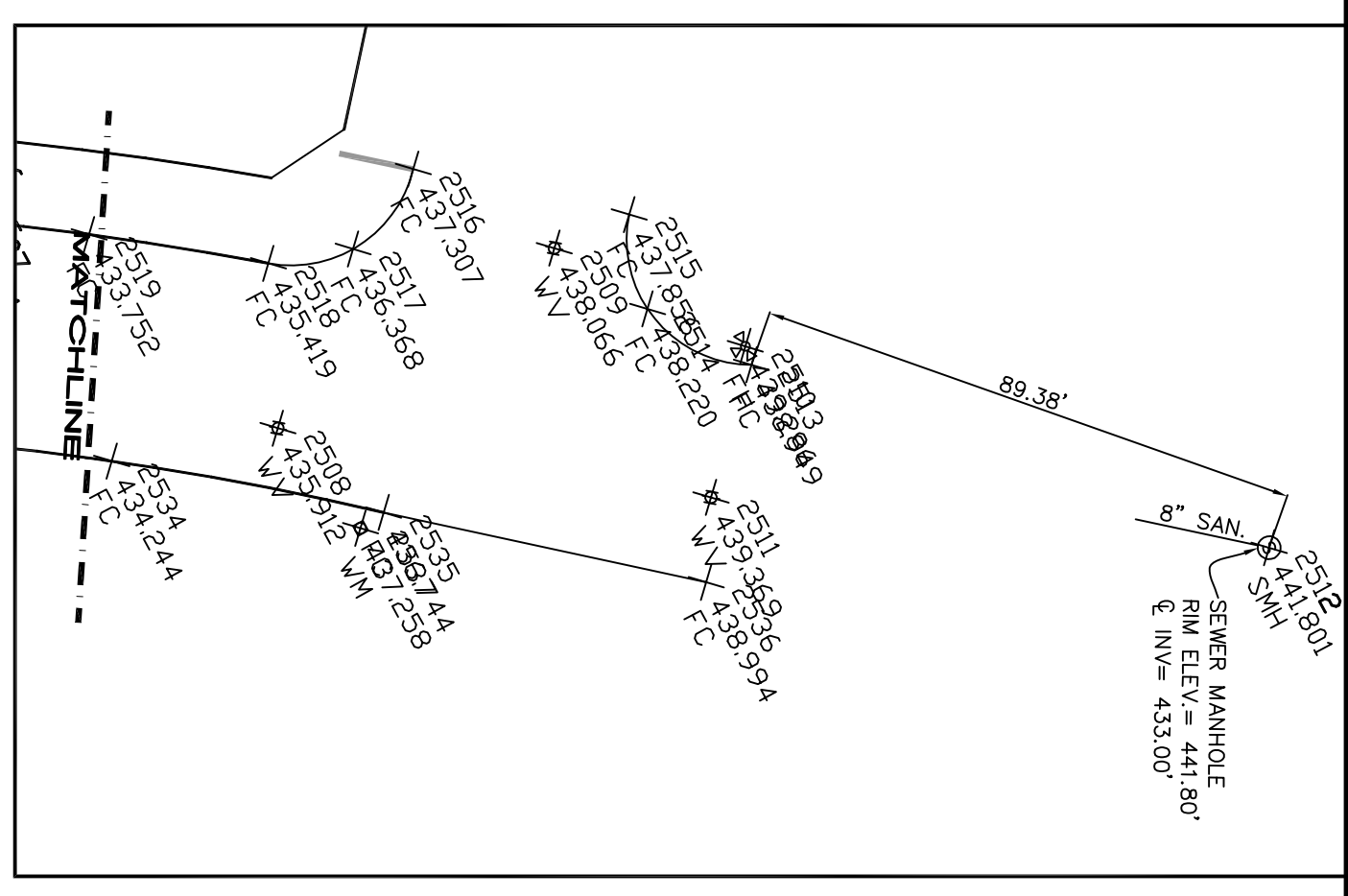


POINT #	NORTHING	EASTING	ELEVATION	DESCRIPTION
1	614323.8118	1385424.114	403.27	TRAVEL LMS
2	615483.2481	1385733.7291	414.22	TRAVEL LMS
3	615793.9771	1385703.6739	426.85	TRAVEL LMS
4	616209.7515	1385469.3794	398.81	TRAVEL LMS
5	616381.7748	1385535.6282	408.32	TRAVEL LMS
6	615398.2212	1385301.5237	392.15	TRAV
7	615454.3833	1385308.7945	392.27	TRAV P-C
8	615491.9584	1385341.9061	397.24	TRAV P-C
9	615511.9172	1385300.4395	392.89	TRAV P-C
10	615424.4248	1385422.2897	390.32	TRAV P-C
11	615317.7218	1385485.3080	383.12	TRAV P-C
12	615433.8778	1385497.3814	398.40	TRAV P-C
13	615304.2003	1385574.6832	405.75	TRAV P-C
14	615471.6961	1385490.7869	407.12	TRAV P-C
89	614302.3001	1385339.3920	397.29	BCO TRAV
90	614333.5000	1385475.3000	400.72	BCO TRAV
2106	615197.0504	1385452.5533	399.50	FLY
2108	615197.0504	1385452.5533	423.21	TRAV FLY
2109	615728.6508	1385437.0314	394.18	TRAV FLY
2214	615788.0088	1385394.9417	391.36	FLY

POINT #	NORTHING	EASTING	ELEVATION	DESCRIPTION
2248	615594.6555	1385447.2565	395.80	FLY
2250	615545.9508	1385461.5254	395.85	FLY
2283	615307.7362	1385402.9244	393.85	FLY
2285	615272.2989	1385353.9117	403.05	FLY
2428	615504.4688	1385242.9333	407.47	FLY

COORDINATE AND BEARINGS SHOWN ON THIS PLAT ARE REFERRED TO THE MARYLAND COORDINATE SYSTEM MADS/91 DATUM AND ARE BASED ON THE FOLLOWING:

STATION	NORTHING	EASTING	ELEVATION
BALT. CO. #1089	6174802.90	135613301.9	397.82
BALT. CO. #1090	6148333.50	1386475.30	400.72



BOUNDARY/TPOGRAPHIC WORKSHEET

PRINCE GEORGES CLOSE

3rd ELECTION DISTRICT
BALTIMORE COUNTY, MD.

GRAPHIC SCALE

1" = 30' (IN FEET)

Colbert Matz Rosentalt, Inc.

Engineers & Planners
2835 Smith Avenue, Suite G
Baltimore, Maryland 21209
Telephone: (410) 653-3838
Facsimile: (410) 653-7953

1	07/17/2018	ROSED CONTING. TABLE	K&B	SCALE: 1"=30'
				DATE: 10/12/06
				JOB NO.: 2006-058
				DESIGNED:
				DRAWN: AIC
				CHECKED: AM
				FILE: 2006058 BT 100906.DWG
				DRAWING NUMBER:
				BY SHEET 1 OF 1