



OFFERING MEMORANDUM

o Deer Foot Ln

IDYLLWILD, CA 92549

8,712 Square feet of residential land available in Idyllwild




BRANDY NELSON

BRANDY@BRANDYNELSON.COM

CELL. 760 238 0552

OFFICE. 760 592 1571

BROKER ASSOCIATE | DRE #: 01471742



The information contained in the following listing is proprietary and strictly confidential. It is intended to be reviewed only by the party receiving it from Equity Union Commercial and it should not be made available to any other person or entity without the written consent of Equity Union Commercial. By taking possession of and reviewing the information contained herein the recipient agrees to hold and treat all such information in the strictest confidence. The recipient further agrees that the recipient will not photocopy or duplicate any part of the email content. If you have no interest in the subject property, please promptly delete this email. This email has been prepared to provide summary, unverified financial and physical information to prospective purchasers, and to establish only a preliminary level of interest in the subject property. The information contained herein is not a substitute for a thorough due diligence investigation. Equity Union Commercial has not made any investigation, and makes no warranty or representation with respect to the income or expenses for the subject property, the future projected financial performance of the property, the size and square footage of the property and improvements, the presence or absence of contaminating substances, PCBs or asbestos, the compliance with local, state and federal regulations, the physical condition of the improvements thereon, or financial condition or business prospects of any tenant, or any tenant's plans or intentions to continue its occupancy of the subject property. The information contained in this offering memorandum has been obtained from sources we believe we believe reliable; however, Equity Union Commercial has not verified, and will not verify, any of the information contained herein, nor has Equity Union Commercial conducted any investigation regarding these matters and makes no warranty or representation whatsoever regarding the accuracy or completeness of the information provided. All potential buyers must take appropriate measures to verify all of the information set forth herein. Prospective buyers shall be responsible for their costs and expenses of investigating the subject property. verified,



TABLE OF CONTENTS

- I. PROPERTY
- II. COMPANY PROFILE

PRESENTED BY

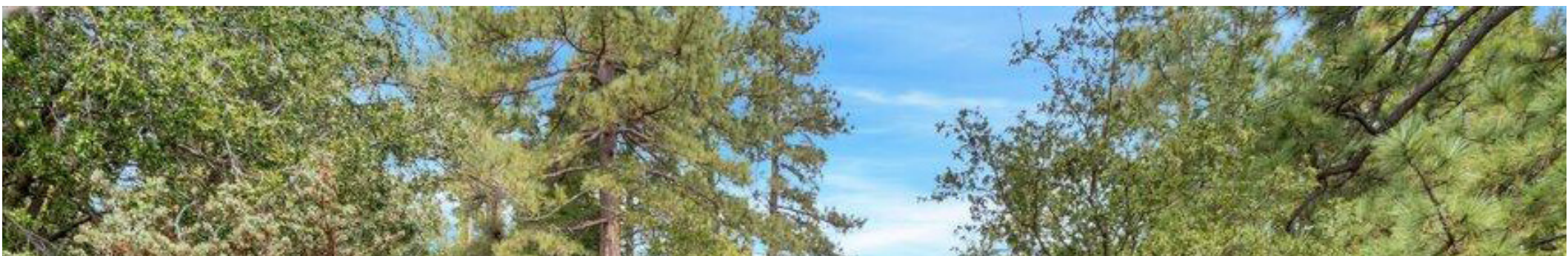
BRANDY NELSON

BRANDY@BRANDYNELSON.COM

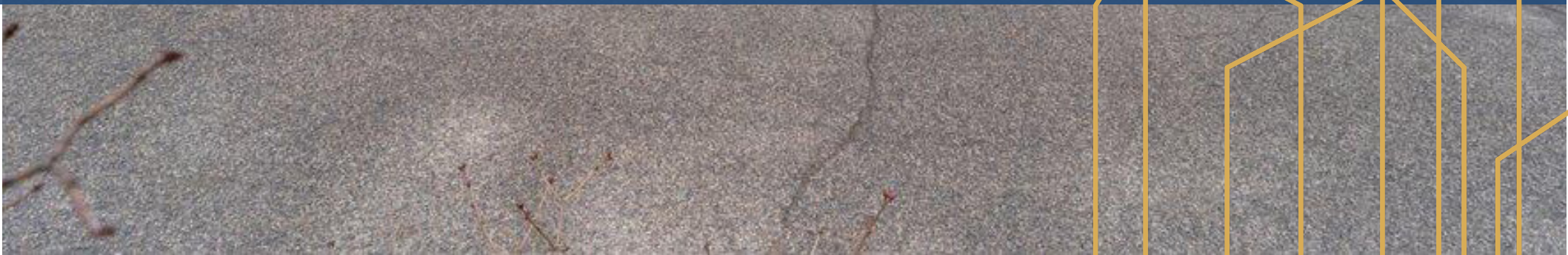
CELL. 760 238 0552

OFFICE. 760 592 1571

BROKER ASSOCIATE | DRE #: 01471742



THE PROPERTY

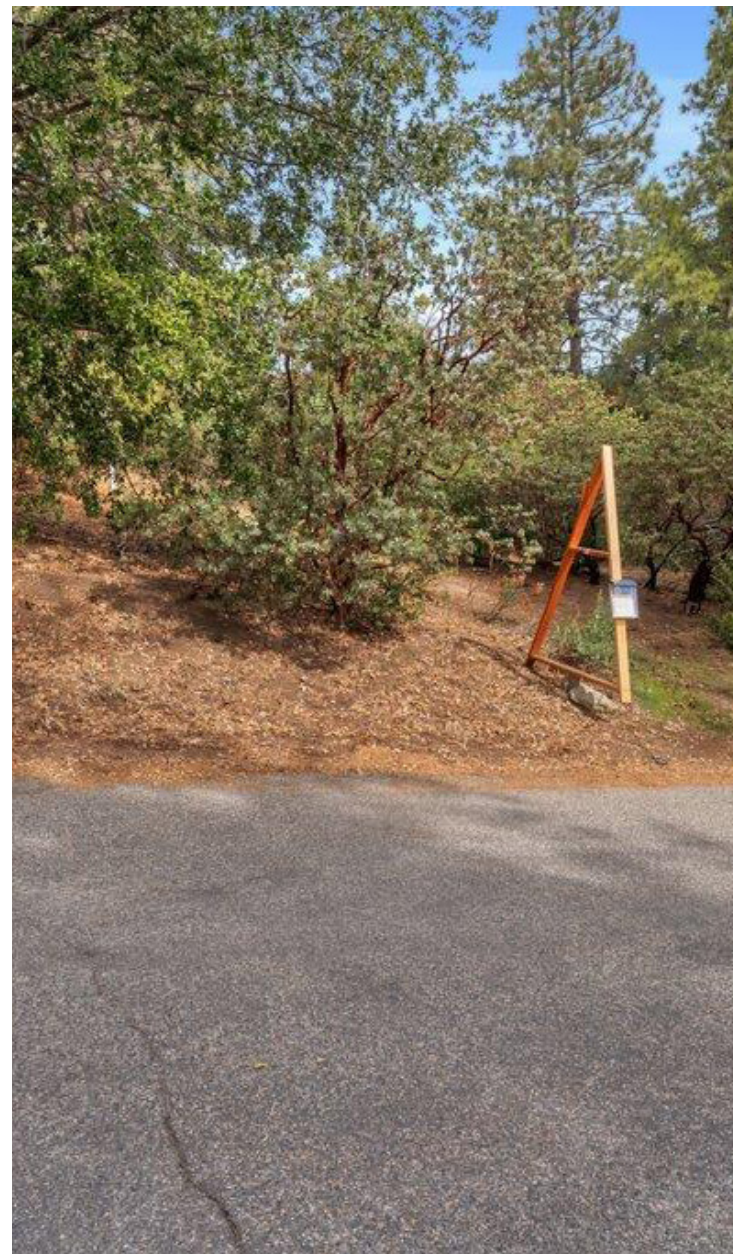


EXECUTIVE SUMMARY

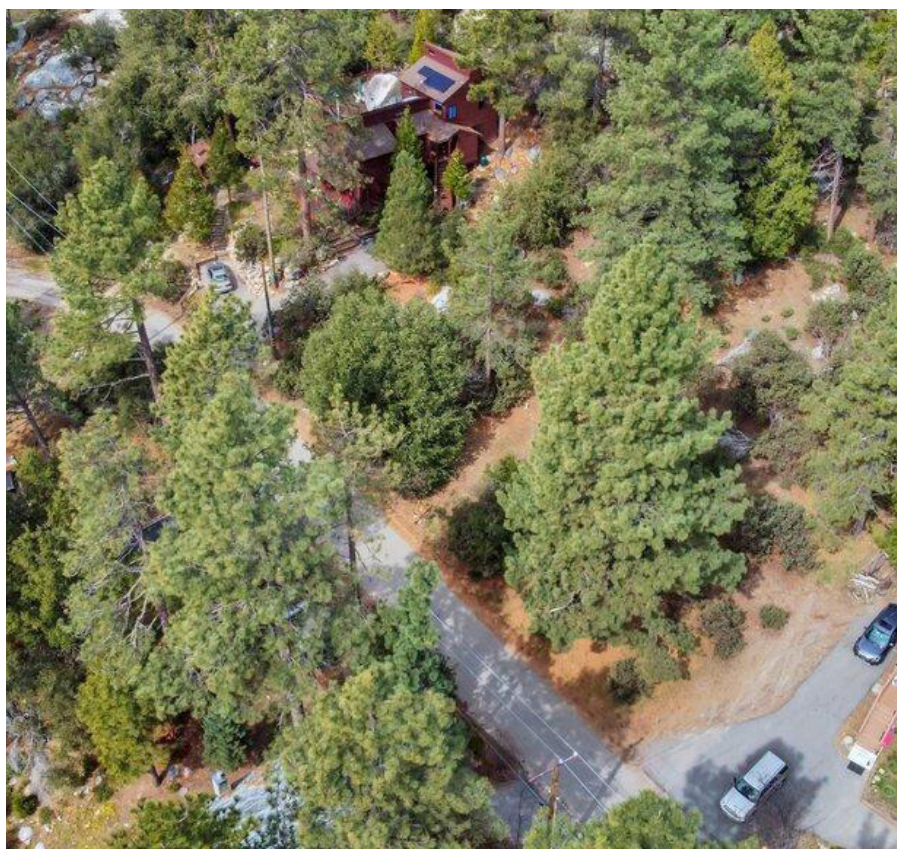
Fantastic property in the Idyllwild with unobstructed views and close proximity to town. The availability of electricity close to the street adds convenience for potential development or construction. Scenic Views with picturesque location. Convenience: The proximity to town is a significant advantage for those who value easy access to amenities, services, and entertainment. The lot is ready for construction, to start building their dream home right away.

PROPERTY HIGHLIGHTS

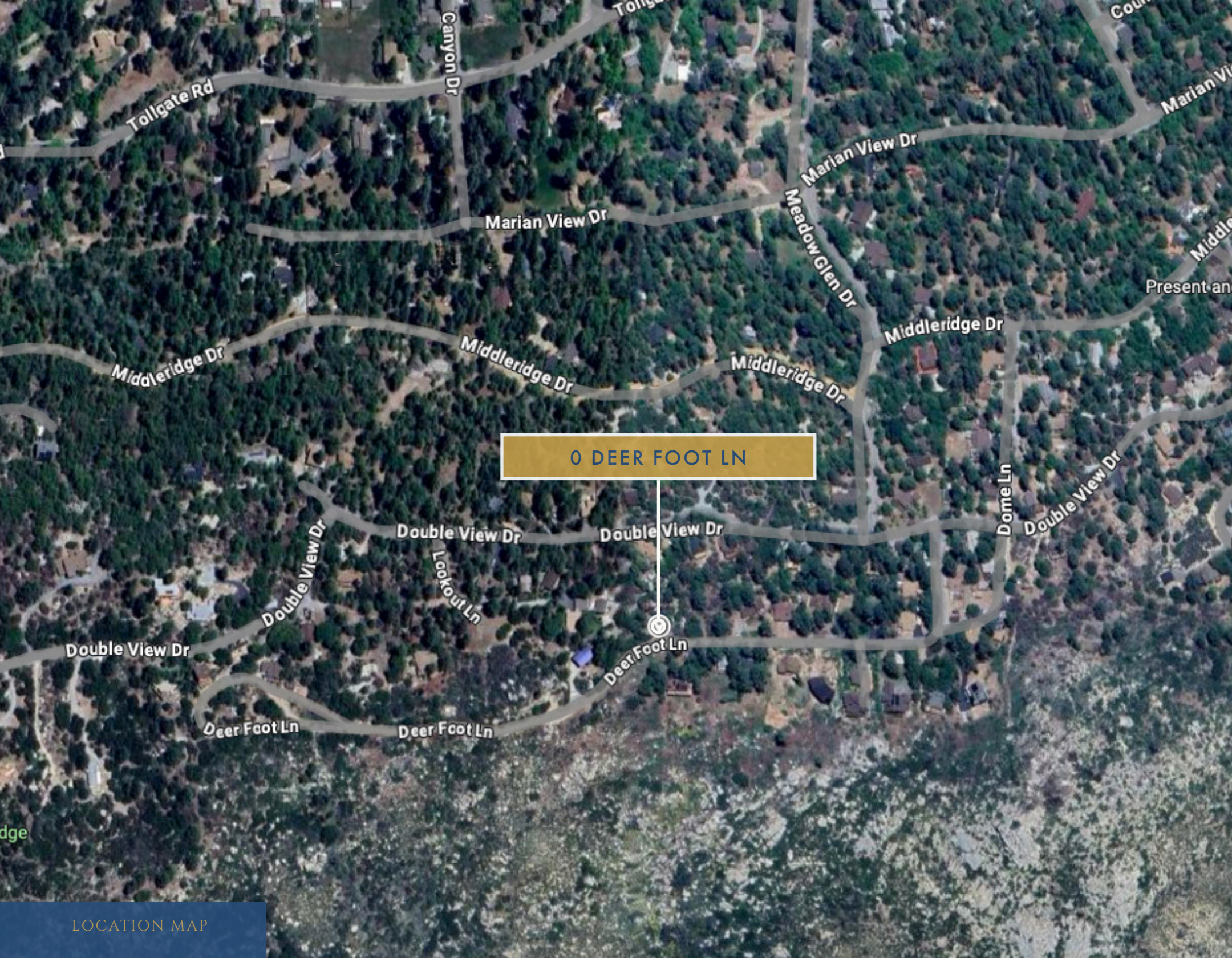
TOTAL LAND AREA	0.2 AC
LOT SIZE (SF)	8,712 SF
PRICE PER SQUARE FOOT	\$13/SF
CURRENT USE	VACANT
POTENTIAL USAGE	RESIDENTIAL



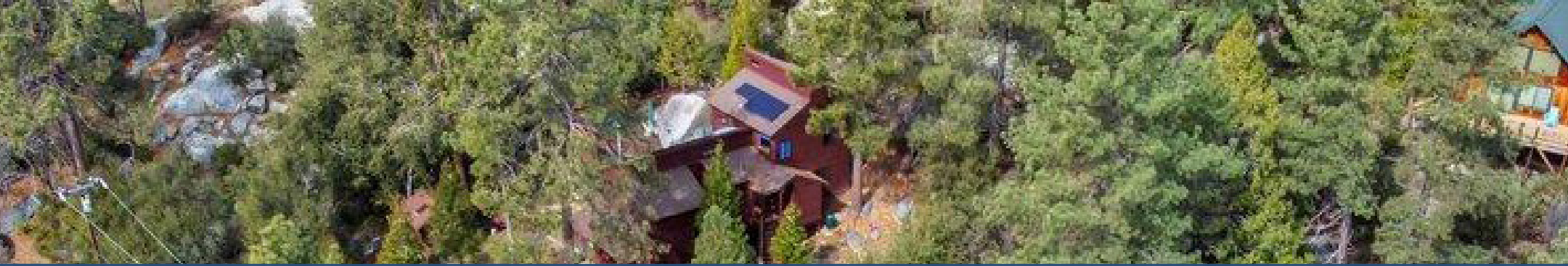
GALLERY



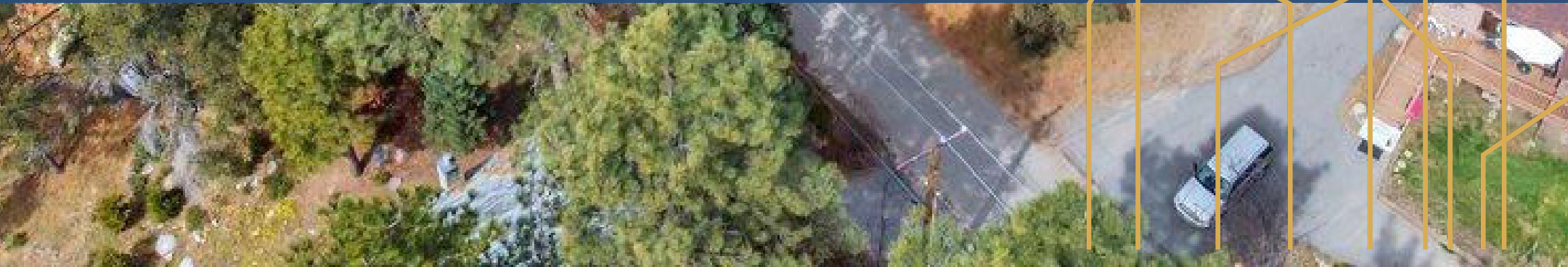





0 DEER FOOT LN



COMPANY PROFILE



An aerial photograph of a city, likely Los Angeles, showing a mix of high-rise buildings and greenery. In the background, there are large mountains under a sky with scattered clouds. A dark blue rectangular box is centered over the middle of the image, containing white text.

OVER \$2 BILLION
IN SALES VOLUME
IN 2023

COMPANY PROFILE

EQUITY UNION COMMERCIAL

From highly specialized brokers to an extensive range of expert services, Equity Union equips our agents to provide buyers and sellers with the confidence they need for investments of this sale.

Your client-broker relationship begins with a thorough Needs Analysis to ascertain the specific details of your unique situation. We ensure you have the ideal broker at your service, complemented by industry-leading analytical resources and technologies, and from there we design a comprehensive strategy to meet and exceed even the most complex and ambitious objectives.

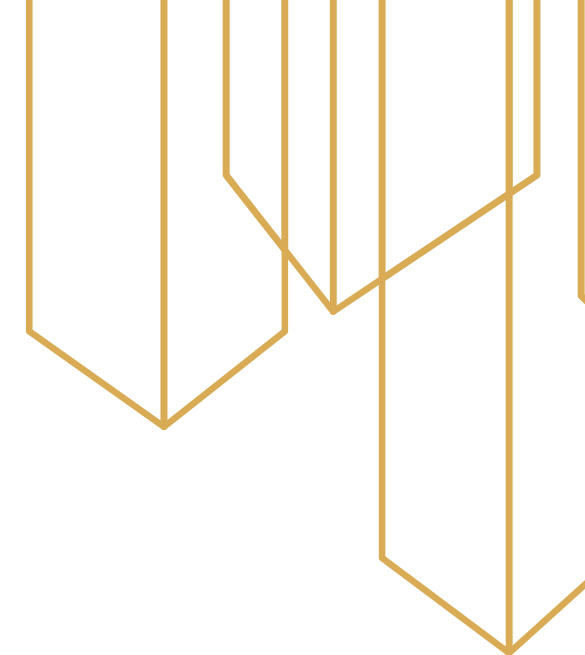
WHETHER YOU'RE AN AGENT, A BUYER, OR A SELLER,

OUR VISION IS YOUR FUTURE.

WITH UNPARALLELED EXCELLENCE, INTEGRITY AND SERVICE,

EQUITY UNION IS HERE TO HELP YOU.

MOVE FORWARD





BRANDY NELSON
BROKER ASSOCIATE

CONTACT INFO
CELL. 760 238 0552
OFFICE. 760 592 1571

EMAIL. BRANDY@BRANDYNELSON.COM
WEB: WWW.BRANDYNELSON.COM

