

9025 Wilshire Blvd

Beverly Hills, CA 90211

MEDICAL SPACE FOR LEASE - CLASS A OFFICE/MEDICAL BUILDING

\$2.00/SF BROKER BONUS

VALID THROUGH Q2 2026 WITH A MINIMUM 3 YEAR DEAL
(BROKER MUST BE PRESENT ON FIRST TOUR)

cag

COMMERCIAL
ASSET GROUP

Adam Funk

Managing Director

310.666.0124

afunk@cagre.com

Lic. 02129715

PROPERTY HIGHLIGHTS

SPACE SIZE

SUITE 215: ±850 RSF

SUITE 301: ±8,137 RSF

(DIVISIBLE TO ±2,000 RSF)

SUITE 400: ±2,500 RSF

(DIVISIBLE TO ±1,000 RSF)

SUITE 407: ±1,700 RSF

PENTHOUSE: ±2,267 RSF

AVAILABLE 7/6/2026

RENTAL RATE

NEGOTIABLE

TERM

3 - 10 YEARS

AVAILABILITY

IMMEDIATELY

PARKING

2/1,000 RSF

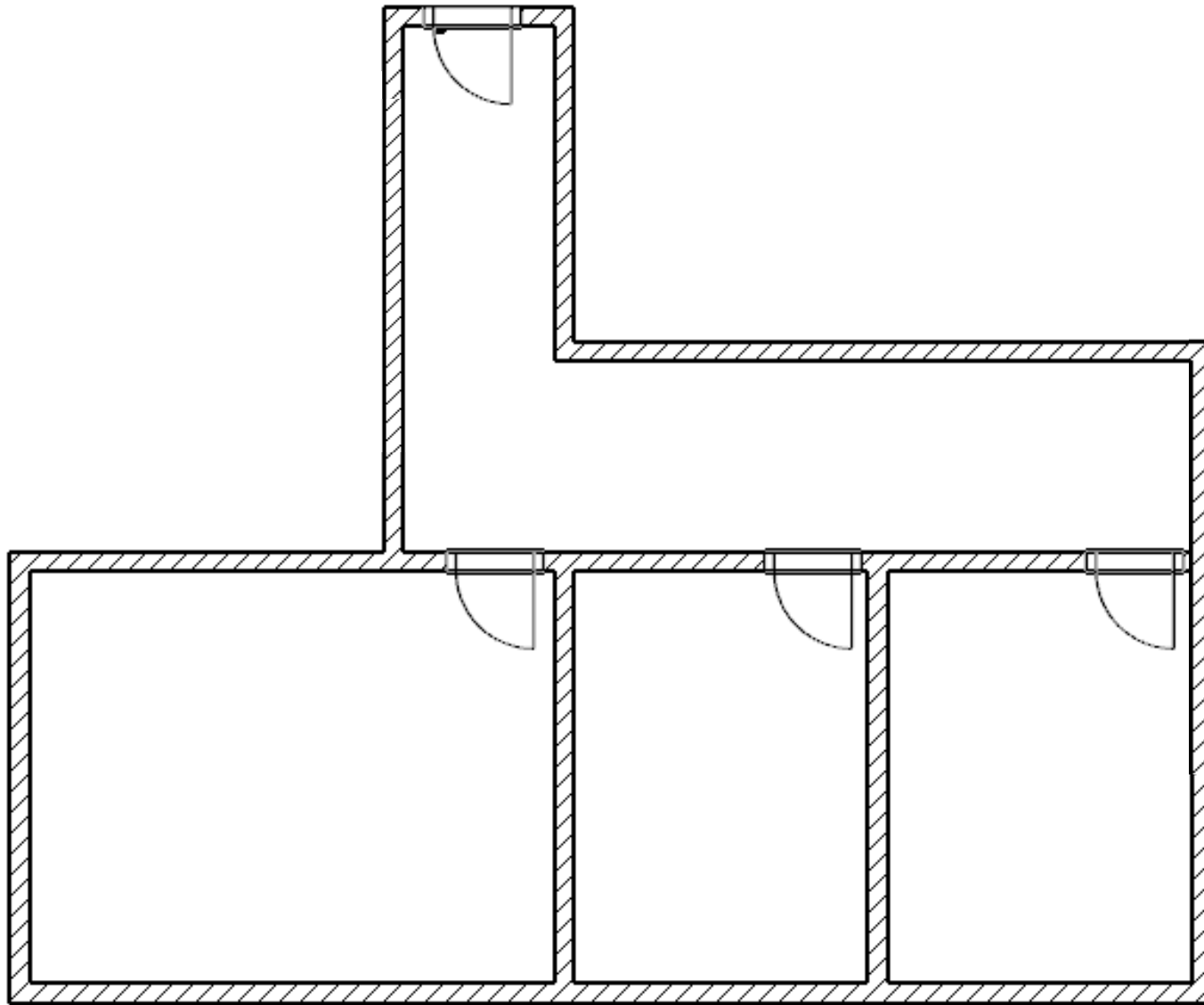
RESERVED: \$195/MO

UNRESERVED: \$165/MO



9025 Wilshire is located on the northeast corner of Wilshire and Wetherly Drive. The five-story, 50,008 square foot Beverly Hills office building is in close proximity to highend retail stores, trendy restaurants and chic offices. The building is well maintained by on-site management and has subterranean parking. Locally renowned La Gondola restaurant on site.

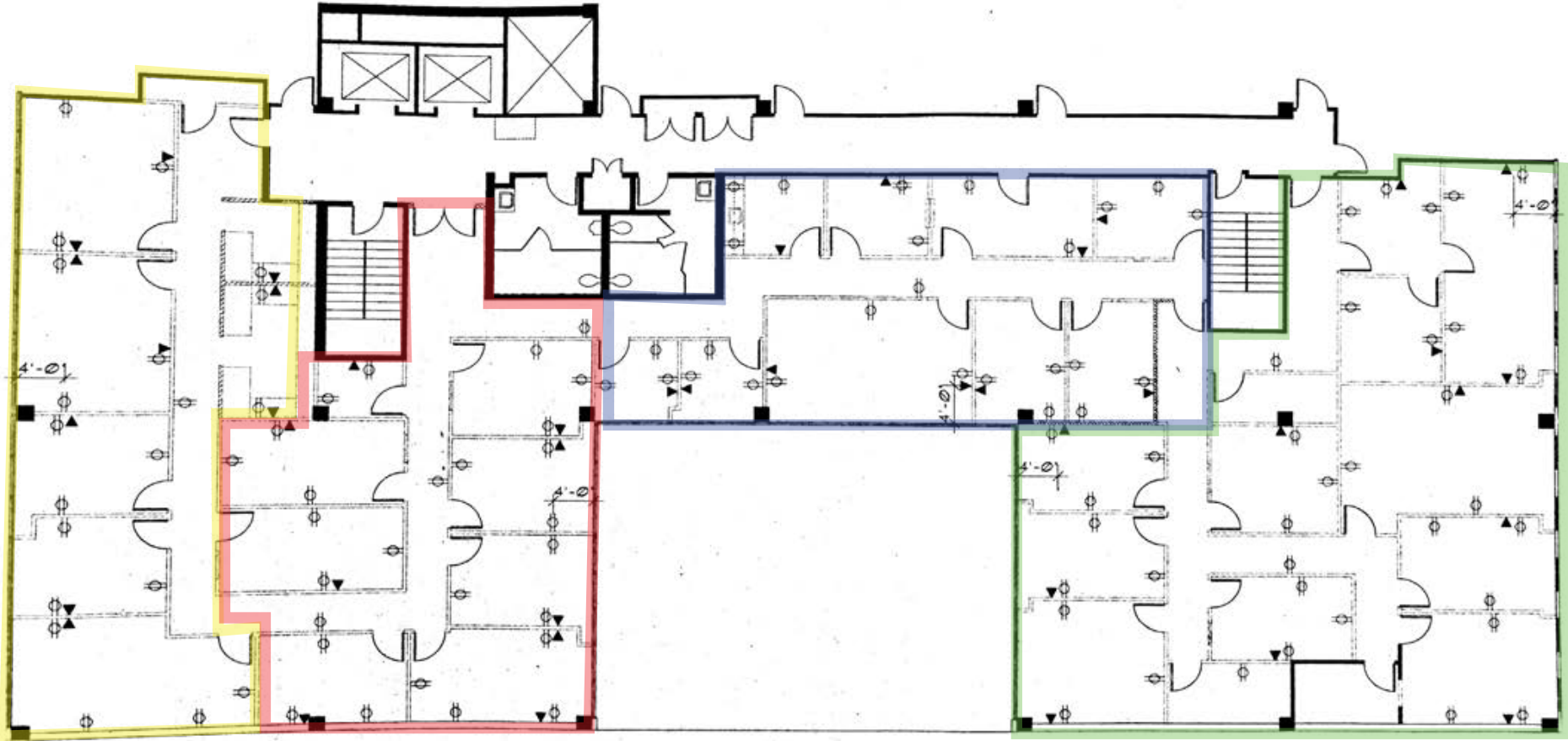
SUITE 215 FLOOR PLAN: ±850 RSF



SUITE 215 PHOTOS



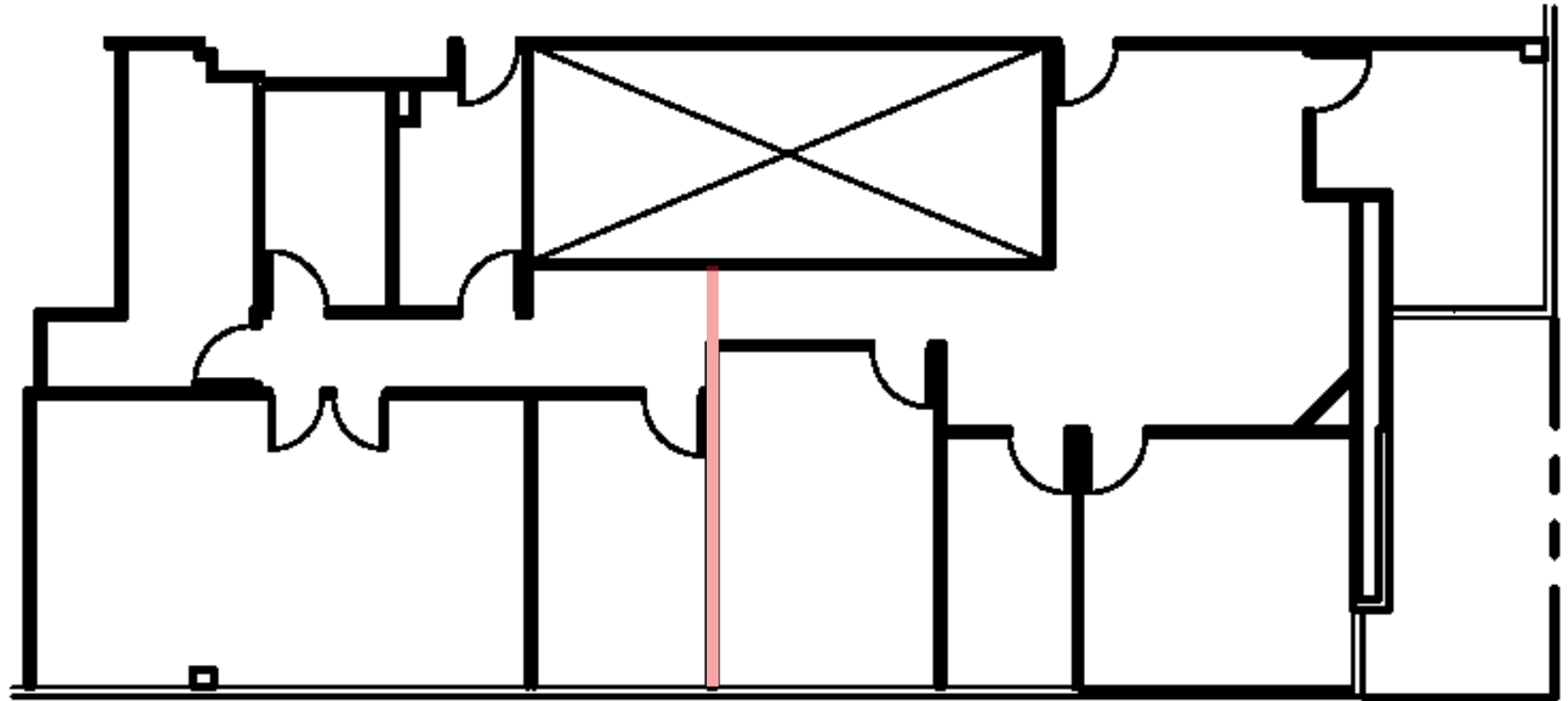
**SUITE 301 FLOOR PLAN:
CONTIGUOUS FOR ±8,137 RSF (DIVISIBLE TO ±2,000 SF)**



SUITE 301 PHOTOS



SUITE 400 FLOOR PLAN: ±2,500 RSF (DIVISIBLE TO ±1,000 RSF)



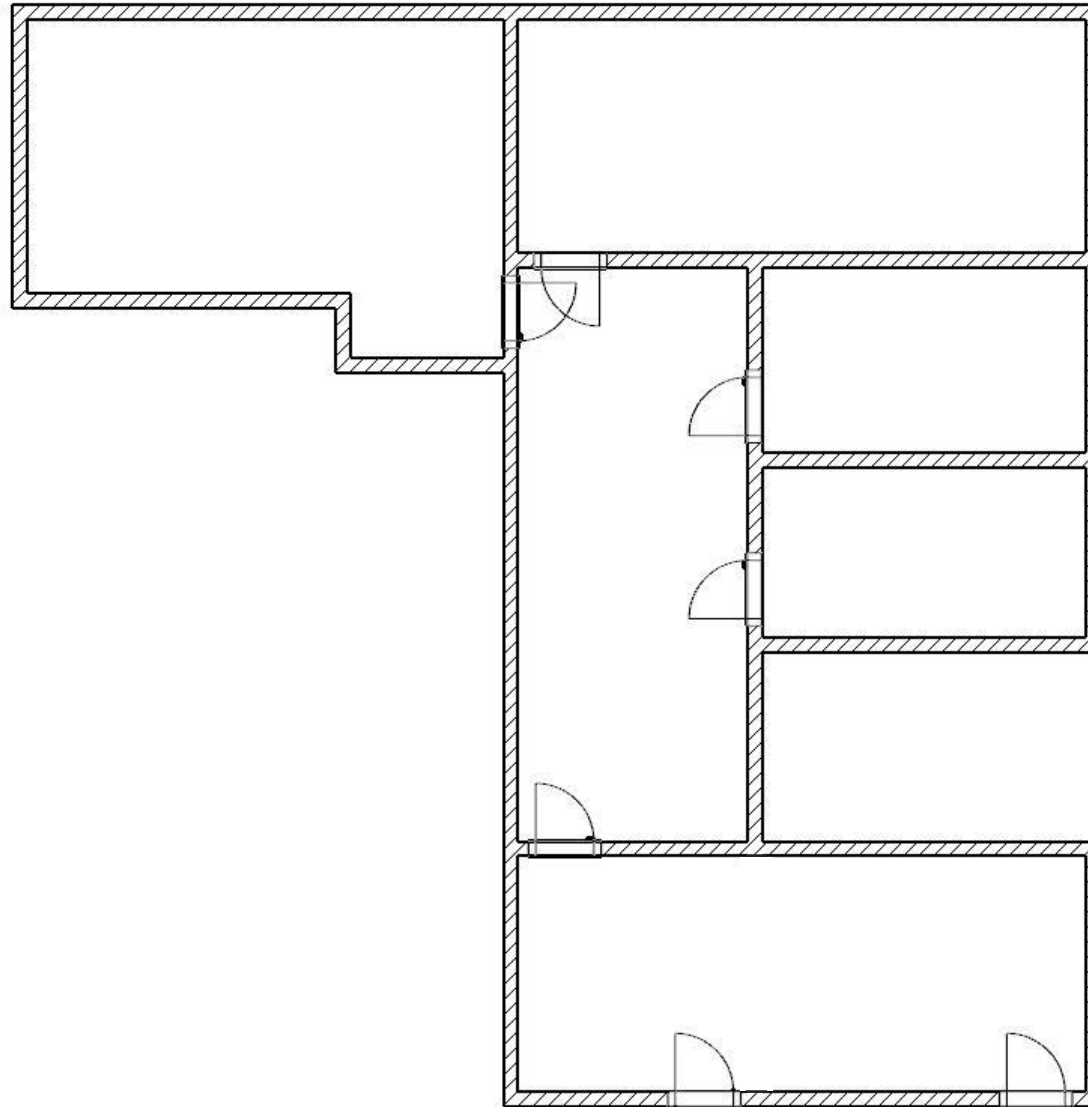
±1,000 RSF

±1,500 RSF

SUITE 400 PHOTOS



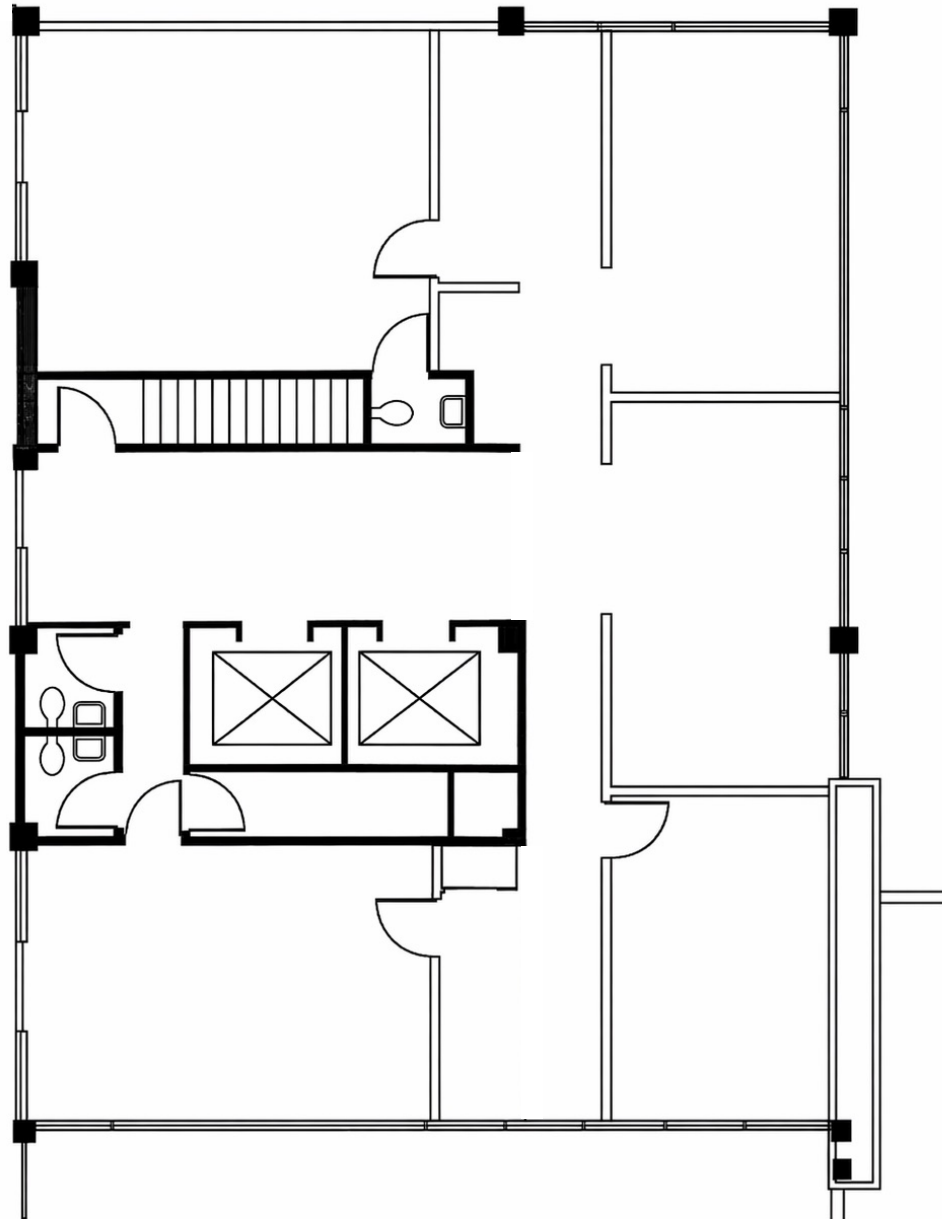
SUITE 407 FLOOR PLAN: ±1,700 RSF



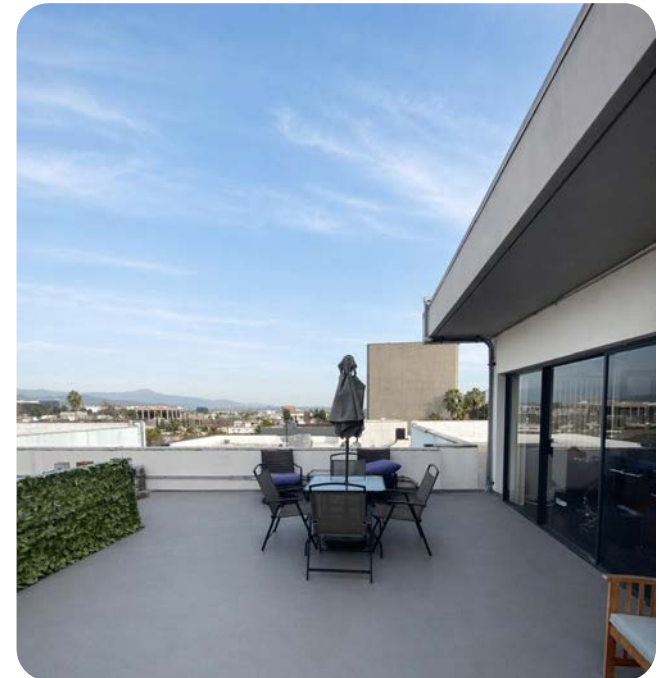
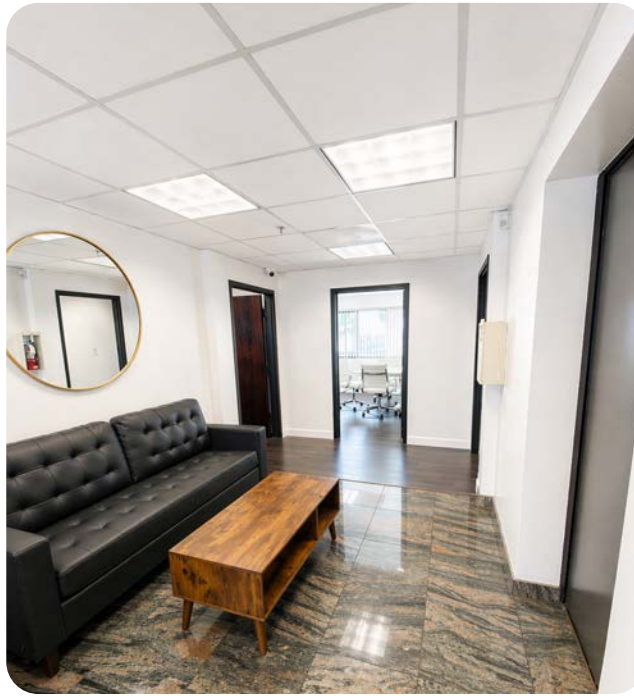
SUITE 407 PHOTOS



PENTHOUSE FLOOR PLAN: ±2,267 RSF



PENTHOUSE PHOTOS



AERIAL



These materials are based on information and content provided by others, which we believe are accurate. No guarantee, warranty or representation is made by Commercial Asset Group, Inc. or its personnel. All interested parties must independently verify accuracy and completeness. As well, any projections, assumptions, opinion, or estimates are used for example only and do not represent the current or future performance of the identified property. Your tax, financial, legal and toxic substance advisors should conduct a careful investigation of the property and its suitability for your needs, including land use limitations. The property is subject to prior lease, sale, change in price, or withdrawal from the market without notice.

ADAM FUNK

MANAGING DIRECTOR
310.666.0124
AFUNK@CAGRE.COM
LIC. 02129715



**COMMERCIAL
ASSET GROUP**

COMMERCIAL ASSET GROUP

190 N. CANON DRIVE, STE 300
BEVERLY HILLS, CA 90210
P: 310.275.8222 F: 310.275.8223
CAGRE.COM LIC: 01876070

WETHERLY DR
100 N