

Livermore Airway Business Park

L I V E R M O R E , C A L I F O R N I A



488 Lindbergh Ave.

Project 11
Building 1
1,704+/- Sq. Ft.

Light
Industrial /
Office Space

Lease Rate

\$1.55/IG

- Convenient I-580/Airway Blvd. Freeway Accessibility
- Local Property Management
- Unit Size 1,704+/- Sq. Ft.
- 3/1,000 Parking
- Tenant Controlled HVAC
- Comcast & AT&T Availability
- Nearby Yard Availability
- 10' x 12' Grade Level Roll-Up Door
- 15' Interior Clearance
- Sprinklered & Insulated
- 110/208v, 3-Phase Power
- Nearby Tenant Services, Restaurants, Wineries, Golf Courses, Tower-Controlled Airport, 24 Hour Fitness

For Information Contact:

Jennifer Walker / Laurie Smith

Phone 925 455 1234 • Fax 925 455 1546

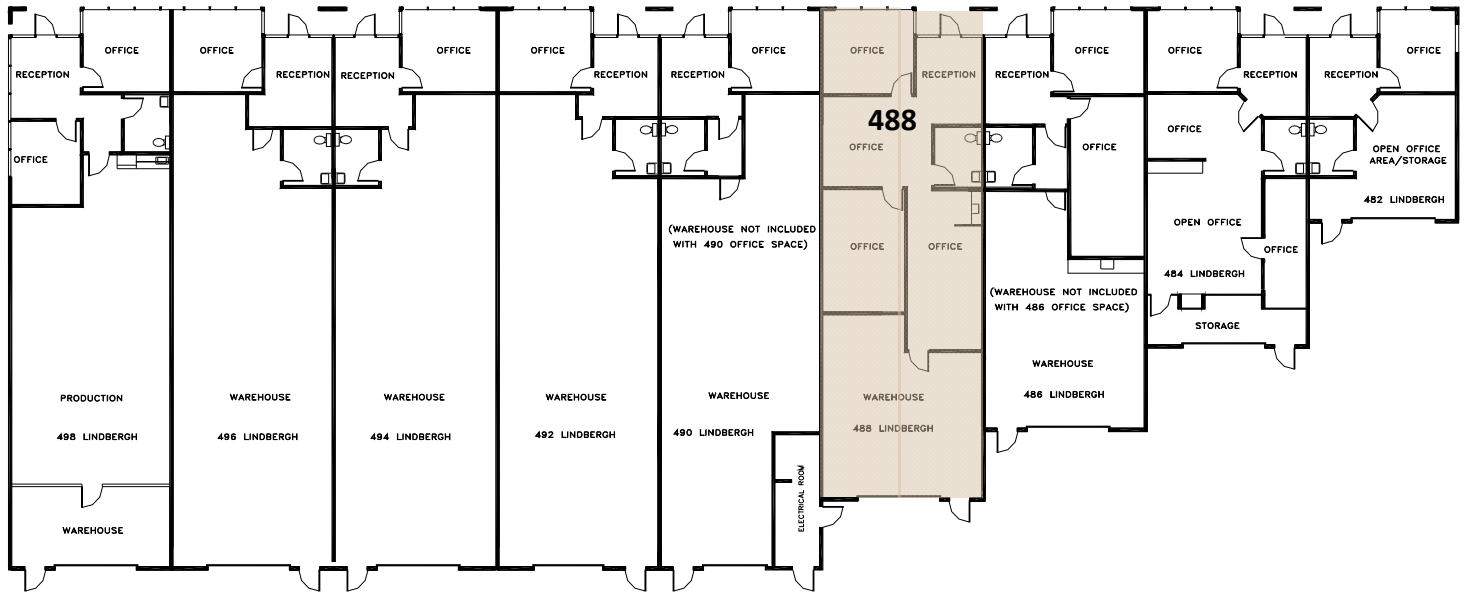
2600 Kitty Hawk Road, Suite 100, Livermore, California 94551

Project 11 – Building 1 – 488 Lindbergh Ave.

L I V E R M O R E , C A L I F O R N I A

Building Floor Plan

1,704+/- Sq. Ft.



(Floor plan accuracy not warranted and may be changed or updated without notice.)

Available Space

488 Lindbergh Ave. – 1,704+/- Sq. Ft. – \$1.55 Sq. Ft., IG – “AS-IS”

(*3 year lease term required, plus CAM. Quoted rates are for spaces AS-IS. Rates, terms, and availability subject to change or withdrawal without notice.)

Map



MAP NOT TO SCALE



For Information Contact:

Jennifer Walker / Laurie Smith

Phone 925 455 1234 • Fax 925 455 1546

www.tjrinc.com

2600 Kitty Hawk Road, Suite 100, Livermore, California 94551