

Colliers

Available  
2,400 SF

# Restaurant Space For Lease

Available January 1, 2026

## Natalie Hucke

Senior Vice President  
+1 757 217 1882  
natalie.hucke@colliers.com

## Kevin O'Keefe

Senior Vice President  
+1 757 217 1885  
kevin.okeefe@colliers.com

150 W Main Street | Suite 1100  
Norfolk, VA 23510  
+ 757 490 3300  
colliers.com

Demographic Facts	1 Mile	3 Miles	5 Miles
Population	7,936	70,176	233,923
Total Employees	1,968	47,348	159,066
Average HH Income	\$64,532	\$66,339	\$79,894

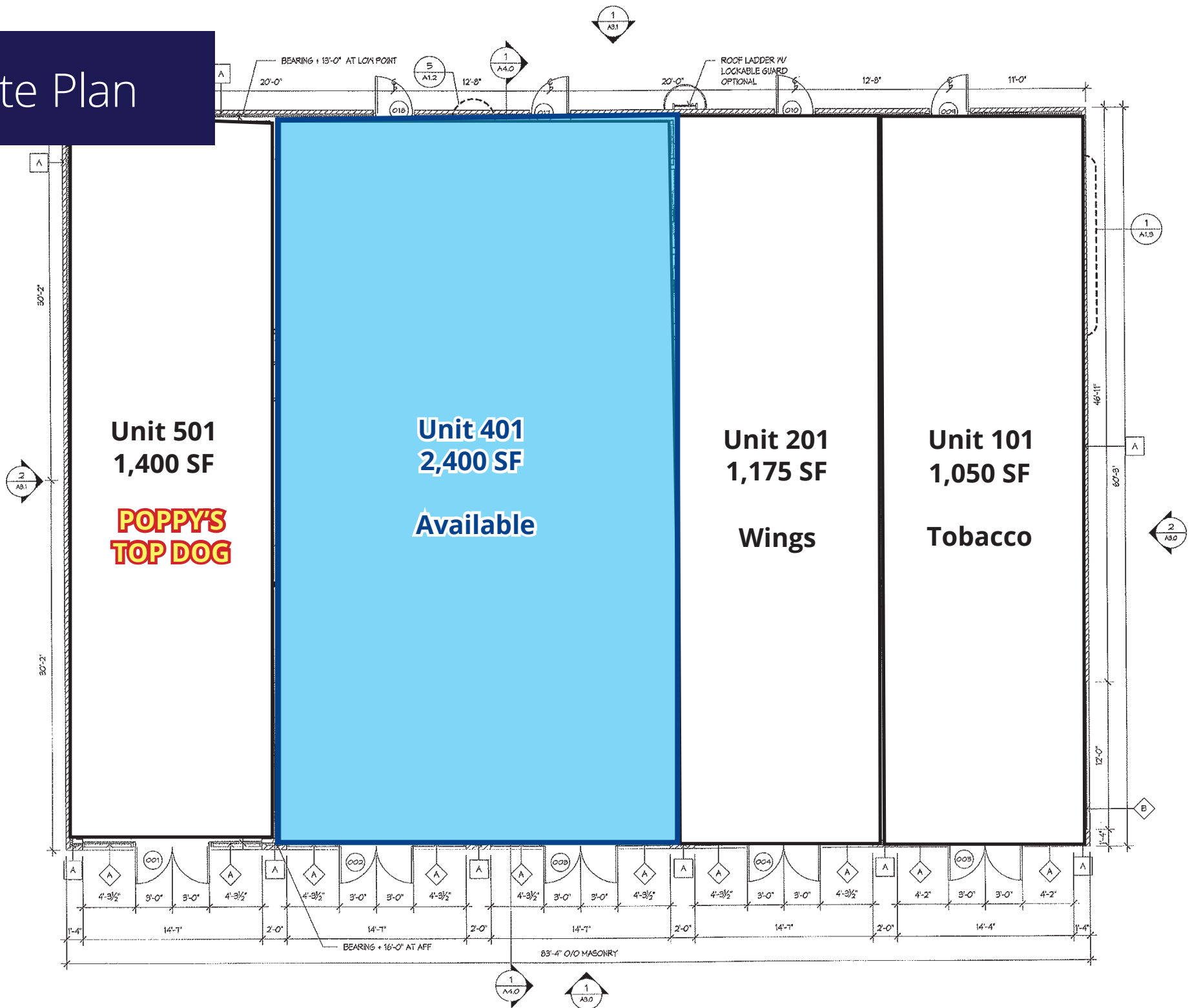
## Bainbridge Crossing | Underserved Retail Market

4027 Bainbridge Boulevard | Chesapeake, VA

- **One 2,400 SF restaurant space available**
- Highly visible 6,025 sf building located right off Interstate 664 in the South Norfolk Submarket of Chesapeake
- Additional .59 acres developable land available
- Ingress/egress from both Portlock & Bainbridge Blvd
- Ample parking available
- Underserved retail/restaurant market
- Dense daytime & evening demographic

Accelerating success.

# Site Plan



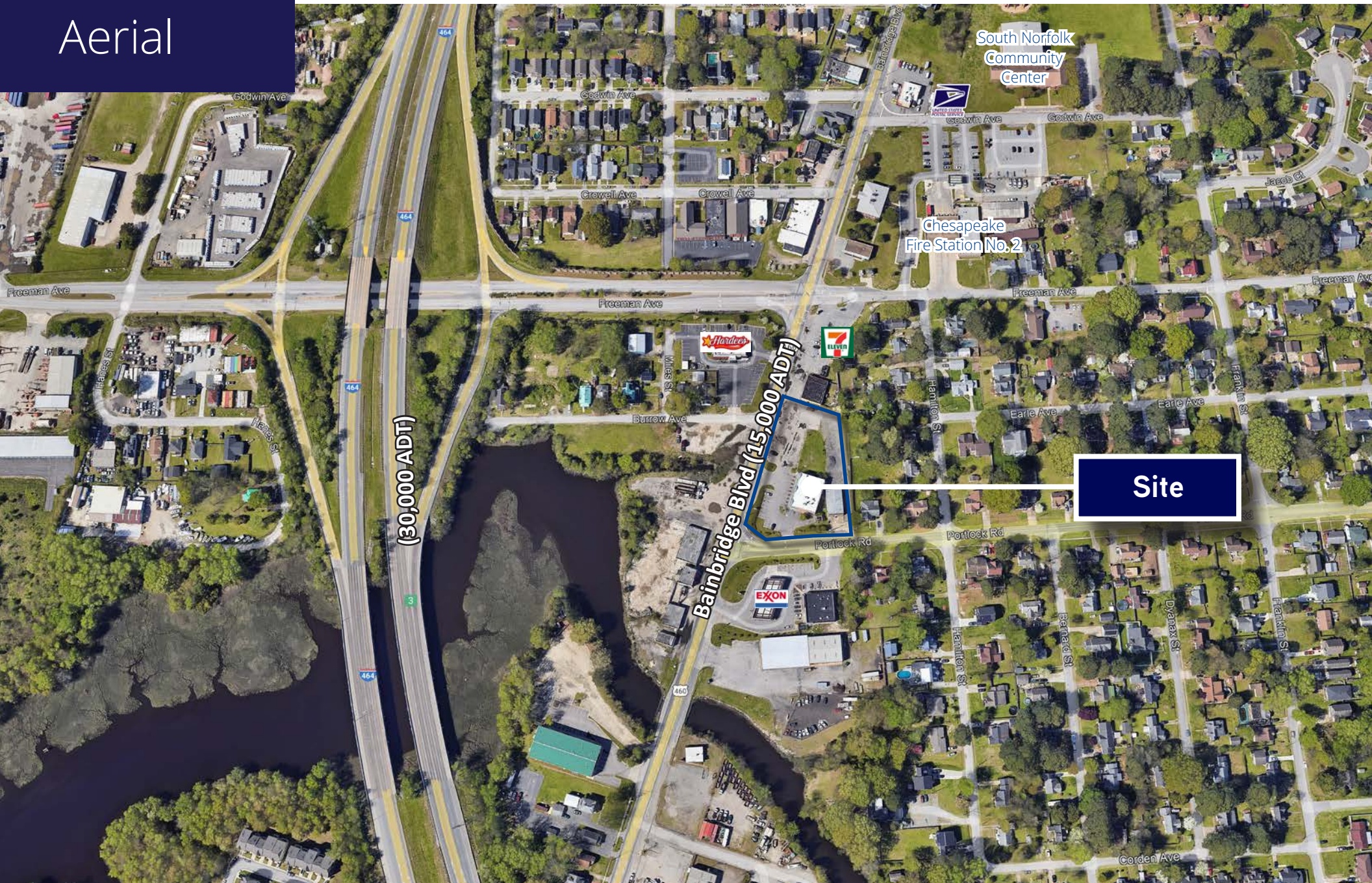


# Photo Gallery





Aerial



South Norfolk  
Community  
Center

Chesapeake  
Fire Station No. 2

Site

(30,000 ADT)

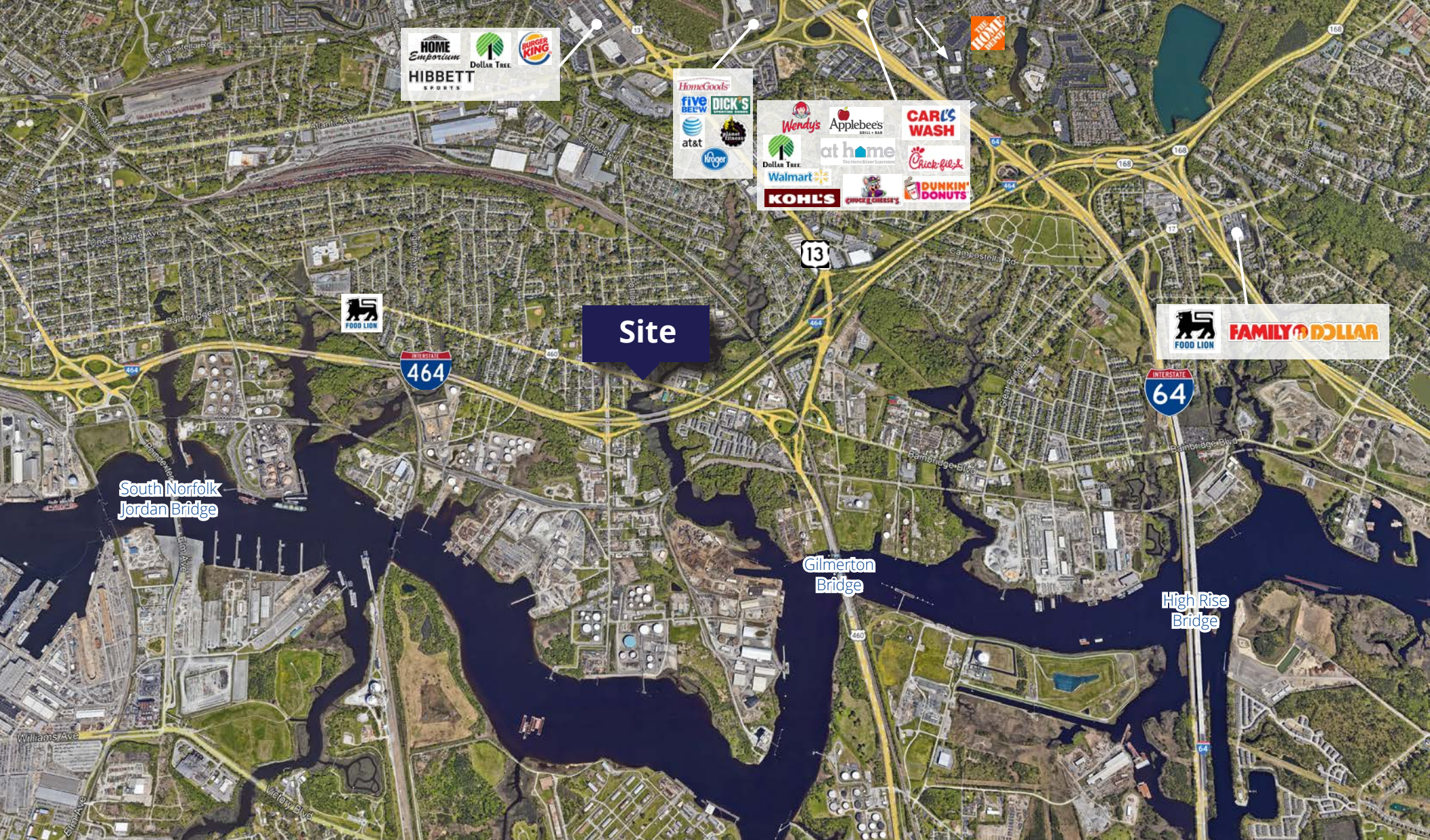
Bainbridge Blvd (15,000 ADT)



# Aerial







**Natalie Hucce**  
 Senior Vice President  
 +1 757 217 1882  
 natalie.hucce@colliers.com

**Kevin O'Keefe**  
 Senior Vice President  
 +1 757 217 1885  
 kevin.okeefe@colliers.com

150 W Main Street, St 1100  
 Norfolk, VA 23510  
 P: +1 757 490 3300  
 colliers.com

