

1,148 - 20,413 SF | FOR LEASE
EXECUTIVE HILLS EAST



**1300 E. 104TH STREET
KANSAS CITY, MO 64114**



Brent Roberts, CCIM
913.359.0945
broberts@lee-associates.com



Bruce Johnson, CCIM
913.730.9830
bjohnson@lee-associates.com
MO #BRS1999032034

We obtained the information above from sources we believe to be reliable. However, we have not verified its accuracy and make no guarantee, warranty or representation about it. It is submitted subject to the possibility of errors, omissions, change of price, rental or other conditions, prior sale, lease or financing, or withdrawal without notice. We include projections, opinions, assumptions or estimates for example only, and they may not represent current or future performance of the property. You and your tax and legal advisors should conduct your own investigation of the property and transaction.

OFFICE FOR LEASE EXECUTIVE HILLS EAST

1300 E. 104th Street, Kansas City, MO 64114



PROPERTY DESCRIPTION

Excellent location with great access to I-435 and Holmes

PROPERTY HIGHLIGHTS

- Free Covered parking
- Great access to I-435
- Common areas renovated in 2022

OFFERING SUMMARY

Lease Rate:	\$21.50 SF/yr (Full Service)
Number of Units:	10
Available SF:	1,148 - 20,413 SF
Building Size:	43,500 SF

DEMOGRAPHICS	1 MILE	2 MILES	3 MILES
Total Households	2,721	13,932	29,030
Total Population	5,354	27,754	59,622
Average HH Income	\$72,718	\$71,472	\$86,064

CONTACT

Brent Roberts, CCIM
broberts@lee-associates.com
D 913.359.0945

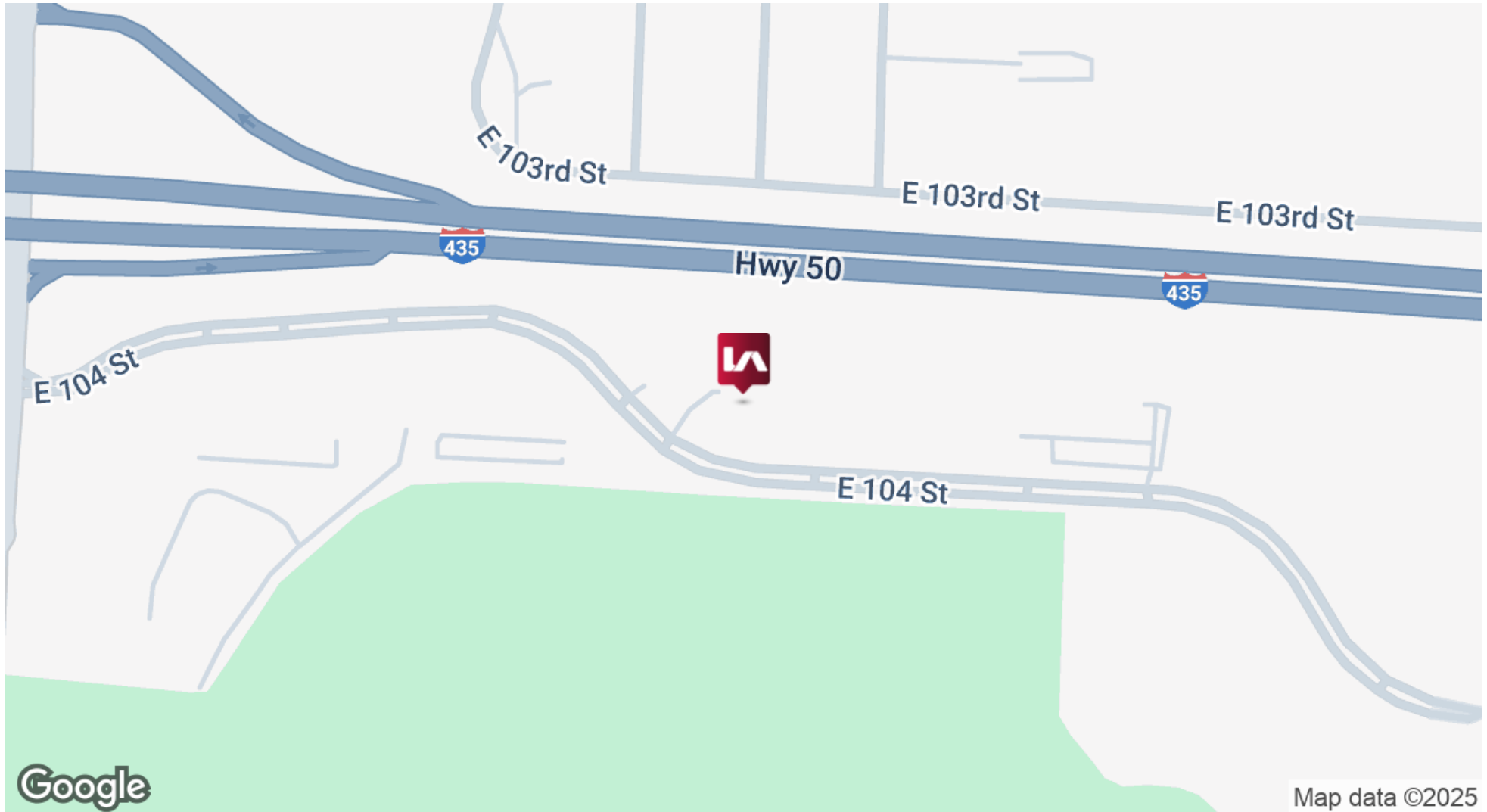
Bruce Johnson, CCIM
bjohnson@lee-associates.com
D 913.730.9830

We obtained the information above from sources we believe to be reliable. However, we have not verified its accuracy and make no guarantee, warranty or representation about it. It is submitted subject to the possibility of errors, omissions, change of price, rental or other conditions, prior sale, lease or financing, or withdrawal without notice. We include projections, opinions, assumptions or estimates for example only, and they may not represent current or future performance of the property. You and your tax and legal advisors should conduct your own investigation of the property and transaction.

OFFICE FOR LEASE EXECUTIVE HILLS EAST

1300 E. 104th Street, Kansas City, MO 64114

**LEE &
ASSOCIATES**
COMMERCIAL REAL ESTATE SERVICES



CONTACT

Brent Roberts, CCIM
broberts@lee-associates.com
D 913.359.0945

Bruce Johnson, CCIM
bjohnson@lee-associates.com
D 913.730.9830

We obtained the information above from sources we believe to be reliable. However, we have not verified its accuracy and make no guarantee, warranty or representation about it. It is submitted subject to the possibility of errors, omissions, change of price, rental or other conditions, prior sale, lease or financing, or withdrawal without notice. We include projections, opinions, assumptions or estimates for example only, and they may not represent current or future performance of the property. You and your tax and legal advisors should conduct your own investigation of the property and transaction.

OFFICE FOR LEASE EXECUTIVE HILLS EAST

1300 E. 104th Street, Kansas City, MO 64114



LEASE INFORMATION

Lease Type:	Full Service	Lease Term:	Negotiable
Total Space:	1,148 - 20,413 SF	Lease Rate:	\$21.50 SF/yr

AVAILABLE SPACES

SUITE	TENANT	SIZE (SF)	LEASE TYPE	LEASE RATE	VIDEO
100	Available	4,500 - 20,413 SF	Full Service	\$21.50 SF/yr	View Here
200	Available	6,623 - 13,789 SF	Full Service	\$21.50 SF/yr	View Here
250	Available	2,588 - 13,789 SF	Full Service	\$21.50 SF/yr	View Here
Suite 220	Available	2,108 - 13,789 SF	Full Service	\$21.50 SF/yr	View Here
Suite 210	Available	1,148 - 13,789 SF	Full Service	\$21.50 SF/yr	-
Suite 225	Available	1,322 - 13,789 SF	Full Service	\$21.50 SF/yr	-

CONTACT

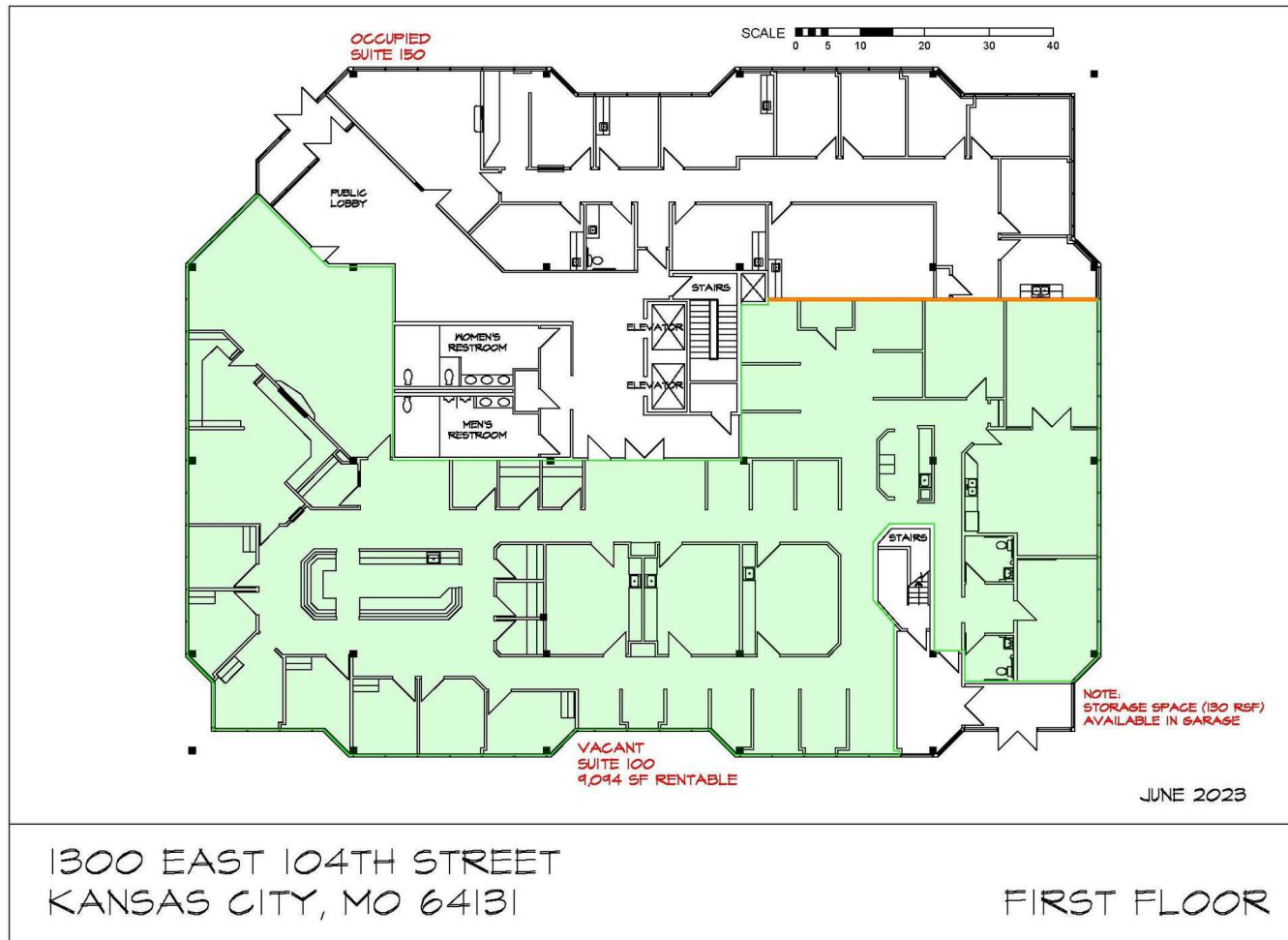
Brent Roberts, CCIM
broberts@lee-associates.com
D 913.359.0945

Bruce Johnson, CCIM
bjohnson@lee-associates.com
D 913.730.9830

We obtained the information above from sources we believe to be reliable. However, we have not verified its accuracy and make no guarantee, warranty or representation about it. It is submitted subject to the possibility of errors, omissions, change of price, rental or other conditions, prior sale, lease or financing, or withdrawal without notice. We include projections, opinions, assumptions or estimates for example only, and they may not represent current or future performance of the property. You and your tax and legal advisors should conduct your own investigation of the property and transaction.

OFFICE FOR LEASE EXECUTIVE HILLS EAST

1300 E. 104th Street, Kansas City, MO 64114



CONTACT

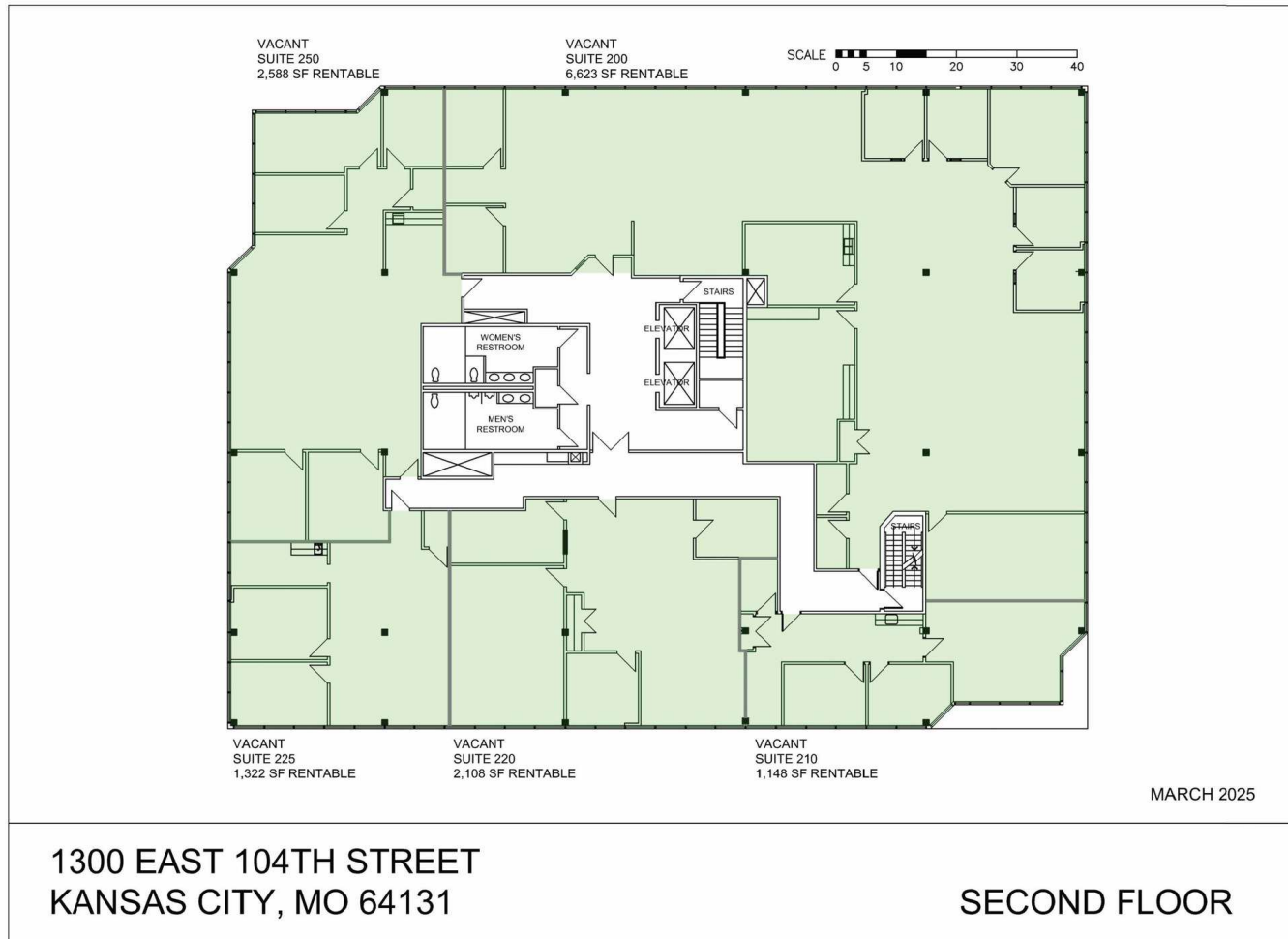
Brent Roberts, CCIM
broberts@lee-associates.com
D 913.359.0945

Bruce Johnson, CCIM
bjohnson@lee-associates.com
D 913.730.9830

We obtained the information above from sources we believe to be reliable. However, we have not verified its accuracy and make no guarantee, warranty or representation about it. It is submitted subject to the possibility of errors, omissions, change of price, rental or other conditions, prior sale, lease or financing, or withdrawal without notice. We include projections, opinions, assumptions or estimates for example only, and they may not represent current or future performance of the property. You and your tax and legal advisors should conduct your own investigation of the property and transaction.

OFFICE FOR LEASE EXECUTIVE HILLS EAST

1300 E. 104th Street, Kansas City, MO 64114



CONTACT

Brent Roberts, CCIM
broberts@lee-associates.com
D 913.359.0945

Bruce Johnson, CCIM
bjohnson@lee-associates.com
D 913.730.9830

We obtained the information above from sources we believe to be reliable. However, we have not verified its accuracy and make no guarantee, warranty or representation about it. It is submitted subject to the possibility of errors, omissions, change of price, rental or other conditions, prior sale, lease or financing, or withdrawal without notice. We include projections, opinions, assumptions or estimates for example only, and they may not represent current or future performance of the property. You and your tax and legal advisors should conduct your own investigation of the property and transaction.

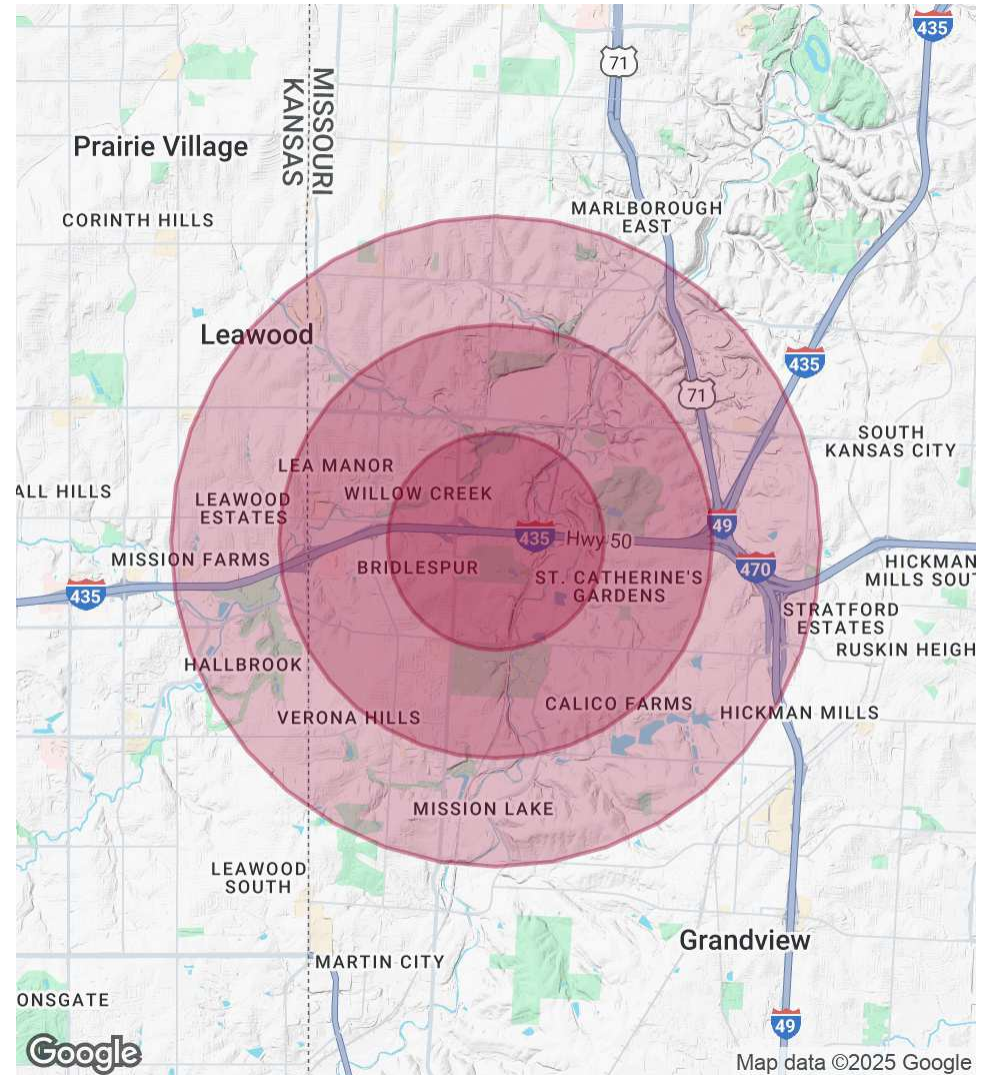
OFFICE FOR LEASE EXECUTIVE HILLS EAST

1300 E. 104th Street, Kansas City, MO 64114

POPULATION	1 MILE	2 MILES	3 MILES
Total Population	5,354	27,754	59,622
Average Age	37.4	40.8	40.0
Average Age (Male)	36.7	37.9	38.4
Average Age (Female)	36.9	42.3	41.3

HOUSEHOLDS & INCOME	1 MILE	2 MILES	3 MILES
Total Households	2,721	13,932	29,030
# of Persons per HH	2.0	2.0	2.1
Average HH Income	\$72,718	\$71,472	\$86,064
Average House Value	\$154,939	\$150,923	\$207,970

2020 American Community Survey (ACS)



CONTACT

Brent Roberts, CCIM
broberts@lee-associates.com
D 913.359.0945

Bruce Johnson, CCIM
bjohnson@lee-associates.com
D 913.730.9830

We obtained the information above from sources we believe to be reliable. However, we have not verified its accuracy and make no guarantee, warranty or representation about it. It is submitted subject to the possibility of errors, omissions, change of price, rental or other conditions, prior sale, lease or financing, or withdrawal without notice. We include projections, opinions, assumptions or estimates for example only, and they may not represent current or future performance of the property. You and your tax and legal advisors should conduct your own investigation of the property and transaction.

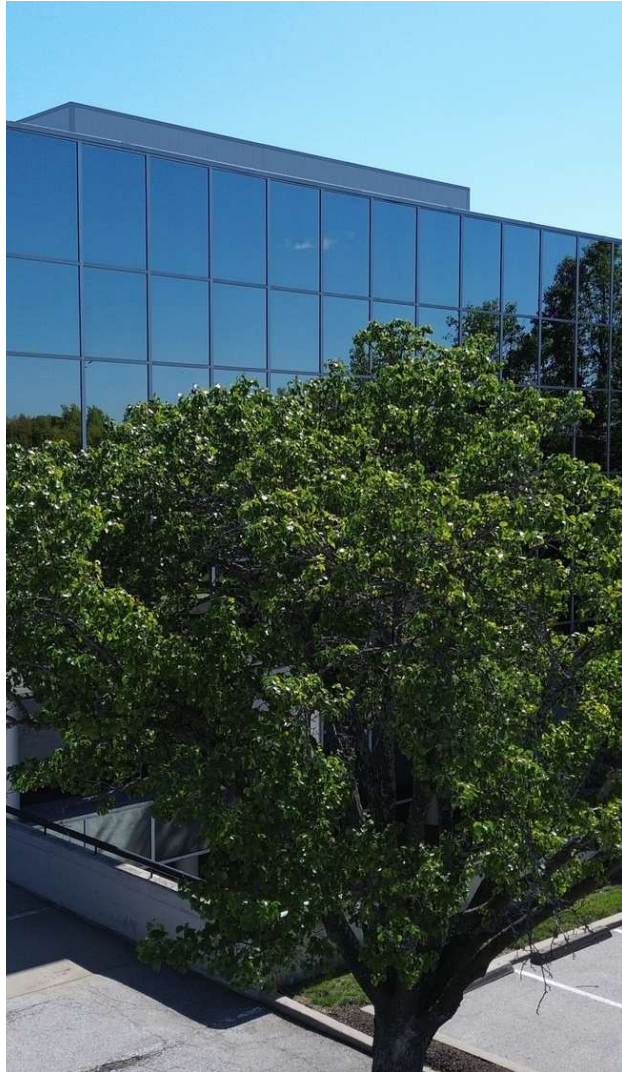
OFFICE FOR LEASE EXECUTIVE HILLS EAST

1300 E. 104th Street, Kansas City, MO 64114

Southside 1300



19



CONTACT

Brent Roberts, CCIM
broberts@lee-associates.com
D 913.359.0945

Bruce Johnson, CCIM
bjohnson@lee-associates.com
D 913.730.9830

We obtained the information above from sources we believe to be reliable. However, we have not verified its accuracy and make no guarantee, warranty or representation about it. It is submitted subject to the possibility of errors, omissions, change of price, rental or other conditions, prior sale, lease or financing, or withdrawal without notice. We include projections, opinions, assumptions or estimates for example only, and they may not represent current or future performance of the property. You and your tax and legal advisors should conduct your own investigation of the property and transaction.