

12220 E. THIRTEEN MILE ROAD
WARREN, MICHIGAN

OFFICE FOR SALE
69,625 Square Feet Available



**SIGNATURE
ASSOCIATES**
KNOW SIGNATURE | KNOW RESULTS



PROPERTY FEATURES

- 69,625 square feet available
- Extraordinary opportunity to purchase a former school building which was later updated to office
- Heavy parking
- Warehouse area (26' x 31') with overhead door has 18' to deck
- Additional land for expansion or parking included
- Located on 7.76 acres
- Sale Price: \$3,375,000 (\$48.47/sq. ft.)



For more information, please contact:

JEFFREY TREPECK
(248) 359 0626
jtrepeck@signatureassociates.com

DAVE MILLER
(248) 948 4183
dmiller@signatureassociates.com

SIGNATURE ASSOCIATES
One Towne Square, Suite 1200
Southfield, MI 48076
www.signatureassociates.com

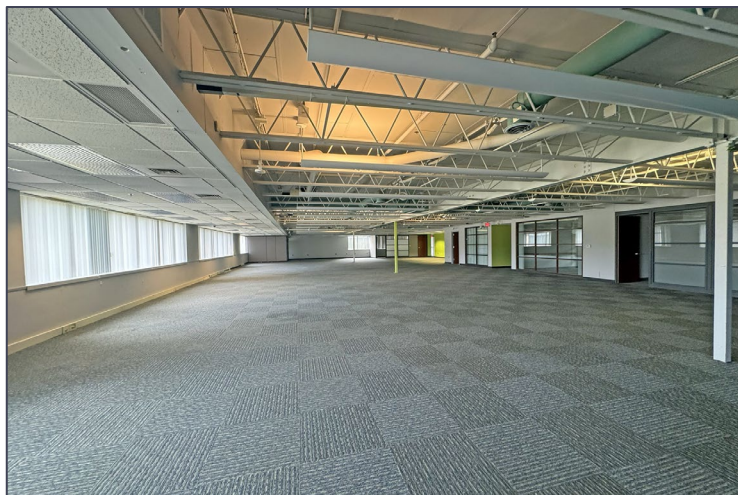
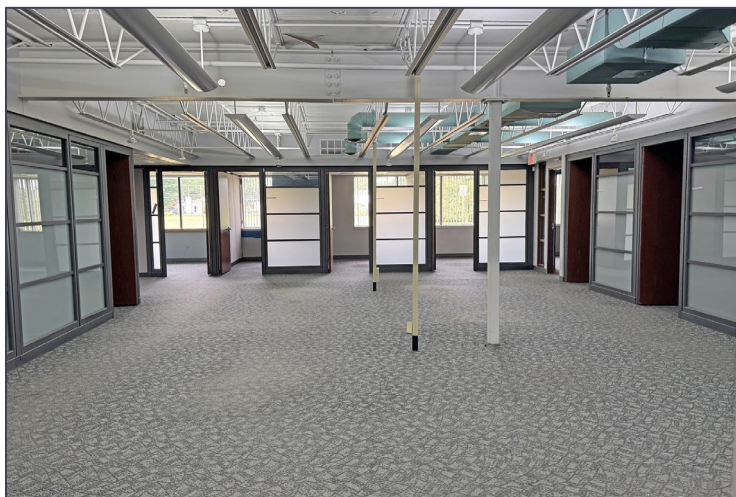
Information is subject to verification and no liability for errors or omissions is assumed. Price is subject to change and listing withdrawal.

12220 E. Thirteen Mile Road – Warren, Michigan

Office For Sale

69,625
Square Feet
AVAILABLE

Interior Photos



For more information, please contact:

JEFFREY TREPECK

(248) 359 0626

jtrepeck@signatureassociates.com

DAVE MILLER

(248) 948 4183

dmiller@signatureassociates.com

SIGNATURE ASSOCIATES
One Towne Square, Suite 1200
Southfield, MI 48076
www.signatureassociates.com

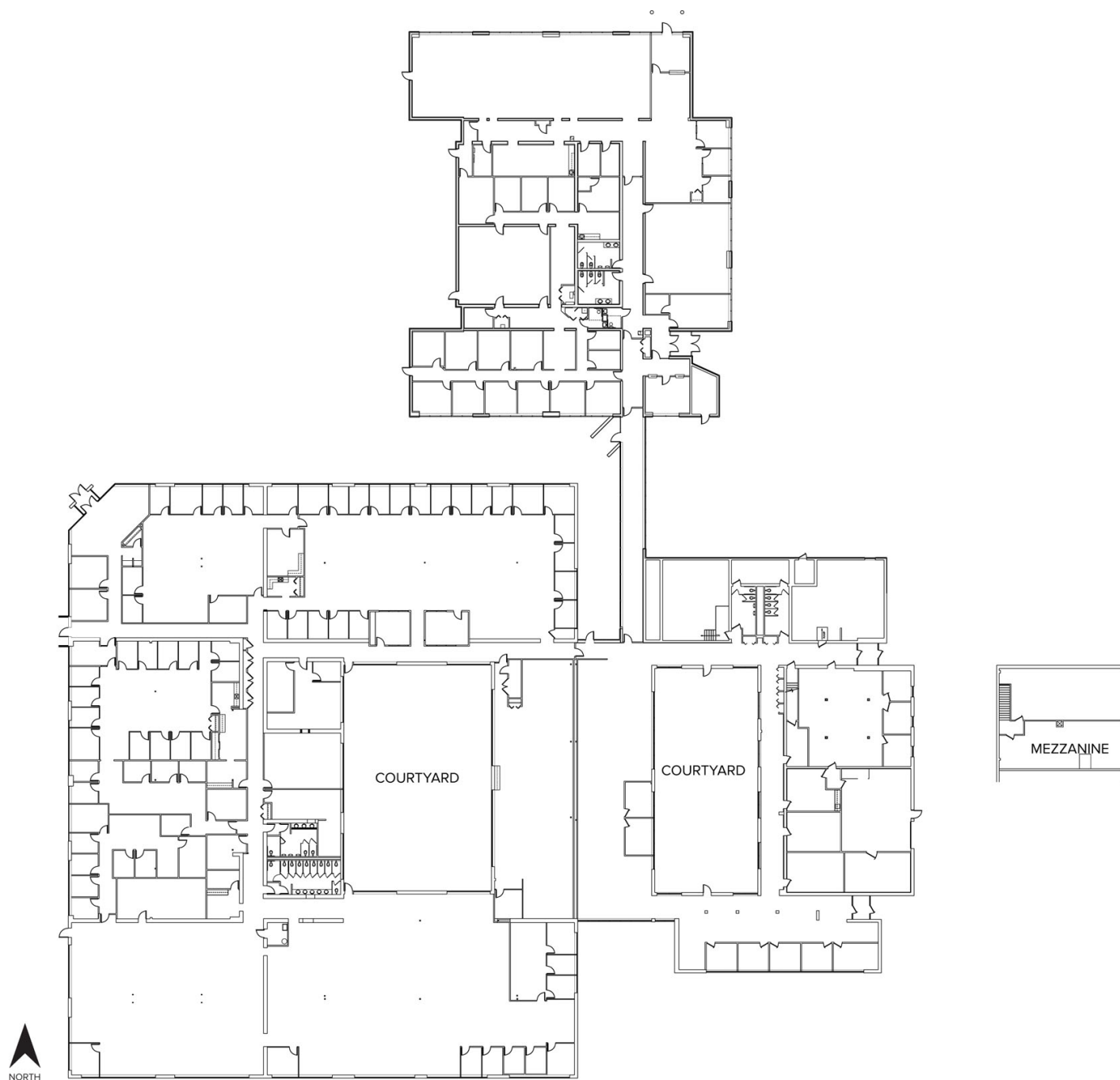
Information is subject to verification and no liability for errors or omissions is assumed. Price is subject to change and listing withdrawal.

12220 E. Thirteen Mile Road – Warren, Michigan

Office For Sale

69,625
Square Feet
AVAILABLE

Floor Plan



For more information, please contact:

JEFFREY TREPECK
(248) 359 0626
jtrepeck@signatureassociates.com

DAVE MILLER
(248) 948 4183
dmiller@signatureassociates.com

SIGNATURE ASSOCIATES
One Towne Square, Suite 1200
Southfield, MI 48076
www.signatureassociates.com

Information is subject to verification and no liability for errors or omissions is assumed. Price is subject to change and listing withdrawal.

12220 E. Thirteen Mile Road – Warren, Michigan

Office For Sale

69,625
Square Feet
AVAILABLE



For more information, please contact:

JEFFREY TREPECK

(248) 359 0626

jtrepeck@signatureassociates.com

DAVE MILLER

(248) 948 4183

dmiller@signatureassociates.com

SIGNATURE ASSOCIATES

One Towne Square, Suite 1200

Southfield, MI 48076

www.signatureassociates.com

Information is subject to verification and no liability for errors or omissions is assumed. Price is subject to change and listing withdrawal.