

# 2119 6TH AVE N

2111 6th Avenue North, Birmingham, AL 35203

OFFICE BUILDING FOR SALE



## PROPERTY HIGHLIGHTS

- Built in 1948
- Zoned B-4
- 152 space parking deck!
- 200' x 190' lot dimensions
- Across the street from the new \$20 million McWane Economic Education Center developed by Junior Achievement of Alabama
- Across the street from Spire HQ
- Adjacent to the former Colonial Plaza recently purchased by the Birmingham Board of Education
- Half block from the Tutwiler Hotel

## JOHN TALLY

Principal and Qualifying Broker  
205.757.0237  
john@tallybhm.com

## OFFERING SUMMARY

|                |             |
|----------------|-------------|
| Sale Price:    | \$2,008,000 |
| Lot Size:      | 38,000 SF   |
| Building Size: | 48,260 SF   |

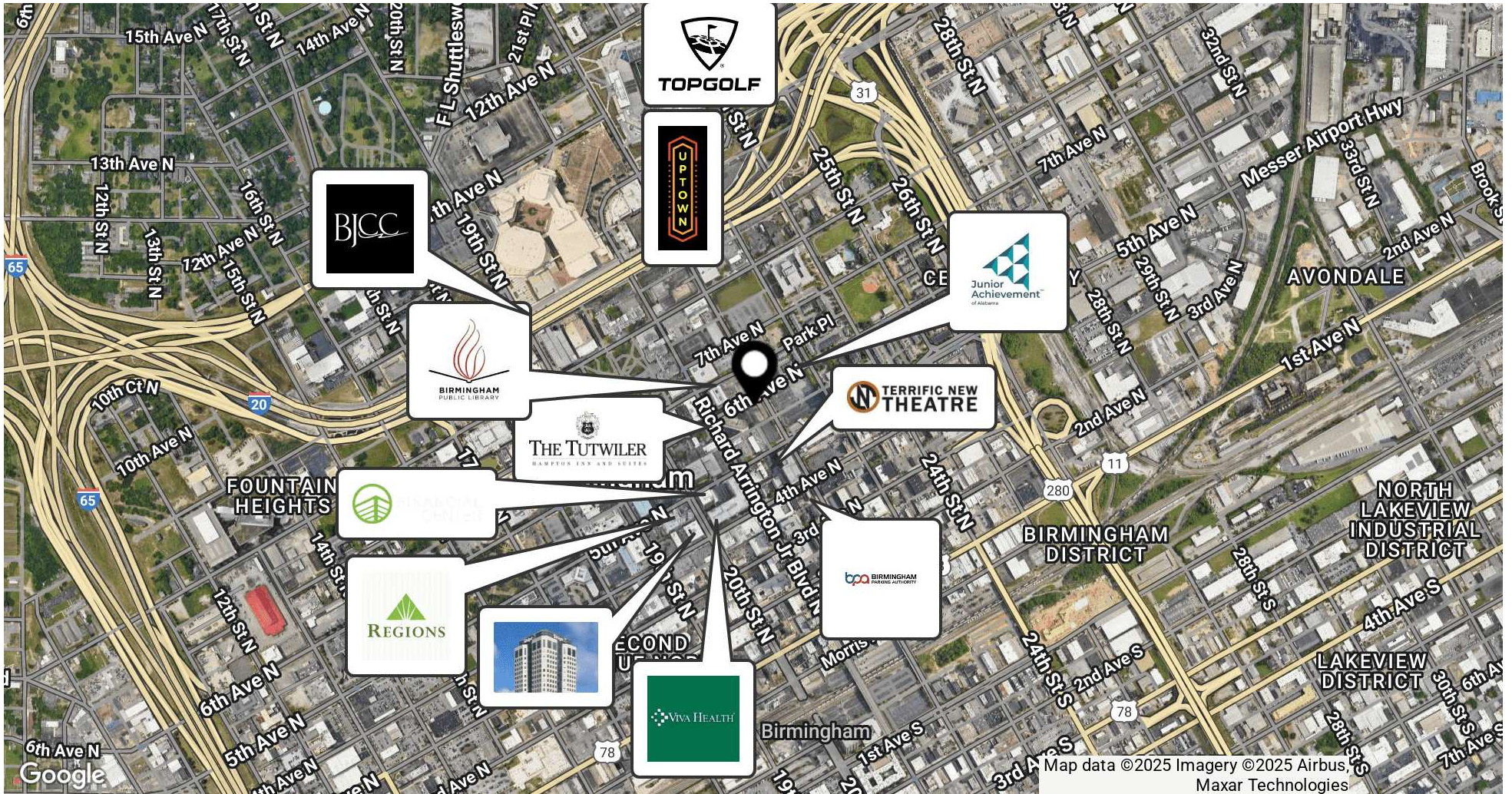
| DEMOGRAPHICS      | 1 MILE   | 2 MILES  | 3 MILES  |
|-------------------|----------|----------|----------|
| Total Households  | 3,557    | 14,918   | 30,328   |
| Total Population  | 7,369    | 31,844   | 65,806   |
| Average HH Income | \$53,133 | \$59,350 | \$70,461 |

**Tally**

# 2119 6TH AVE N

2111 6th Avenue North, Birmingham, AL 35203

OFFICE BUILDING FOR SALE



## JOHN TALLY

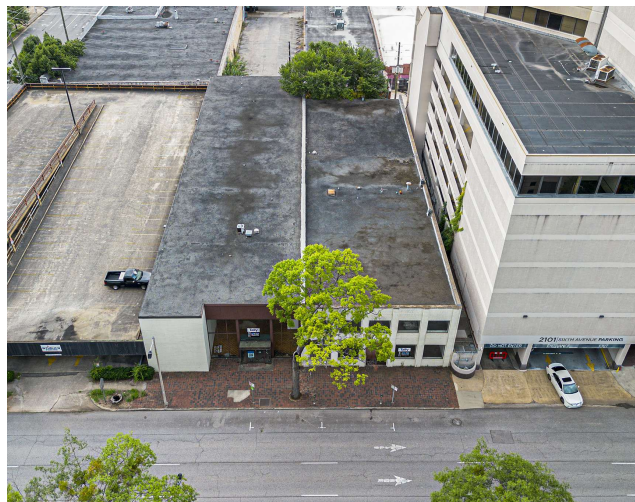
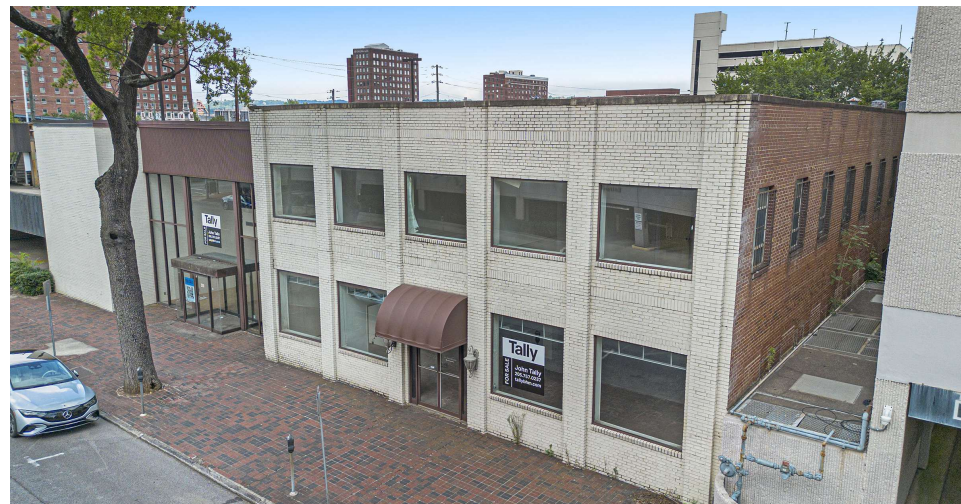
Principal and Qualifying Broker  
205.757.0237  
john@tallybhm.com



# 2119 6TH AVE N

2111 6th Avenue North, Birmingham, AL 35203

OFFICE BUILDING FOR SALE



## JOHN TALLY

Principal and Qualifying Broker  
205.757.0237  
john@tallybhm.com

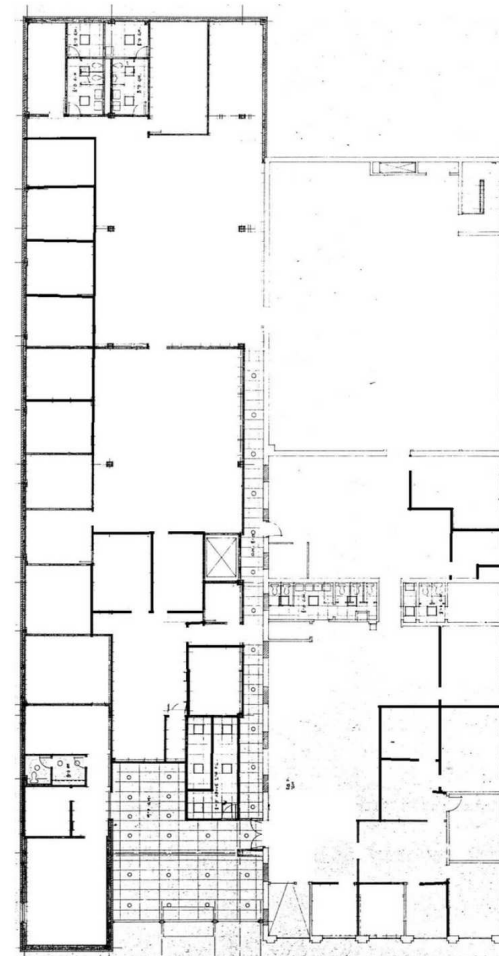
# Tally

# 2119 6TH AVE N

2111 6th Avenue North, Birmingham, AL 35203

OFFICE BUILDING FOR SALE

FIRST FLOOR



## JOHN TALLY

Principal and Qualifying Broker  
205.757.0237  
john@tallybhm.com

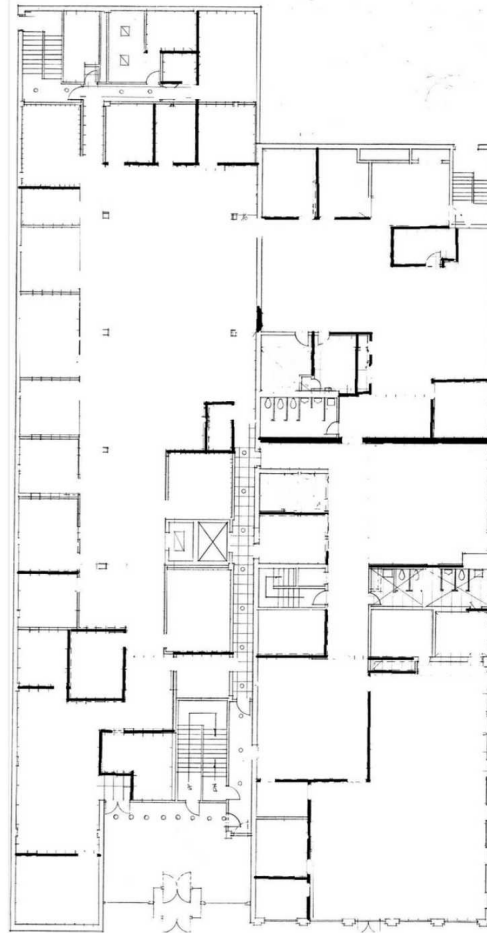
# Tally

# 2119 6TH AVE N

2111 6th Avenue North, Birmingham, AL 35203

OFFICE BUILDING FOR SALE

2ND FLOOR



## JOHN TALLY

Principal and Qualifying Broker  
205.757.0237  
john@tallybhm.com

# Tally

# 2119 6TH AVE N

2111 6th Avenue North, Birmingham, AL 35203

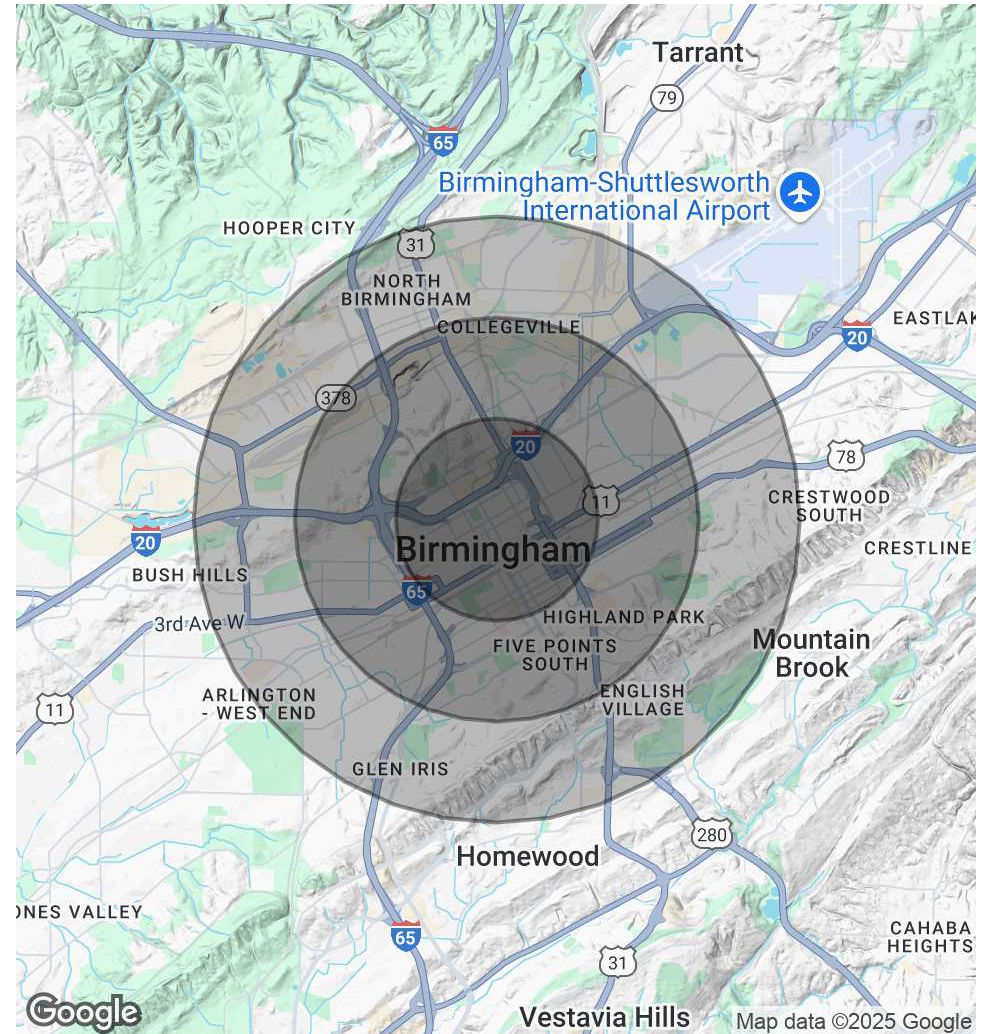
OFFICE BUILDING FOR SALE

| POPULATION           | 1 MILE | 2 MILES | 3 MILES |
|----------------------|--------|---------|---------|
| Total Population     | 7,369  | 31,844  | 65,806  |
| Average Age          | 39     | 38      | 39      |
| Average Age (Male)   | 38     | 37      | 38      |
| Average Age (Female) | 40     | 39      | 40      |

| HOUSEHOLDS & INCOME | 1 MILE    | 2 MILES   | 3 MILES   |
|---------------------|-----------|-----------|-----------|
| Total Households    | 3,557     | 14,918    | 30,328    |
| # of Persons per HH | 2.1       | 2.1       | 2.2       |
| Average HH Income   | \$53,133  | \$59,350  | \$70,461  |
| Average House Value | \$239,540 | \$269,914 | \$313,726 |

Demographics data derived from AlphaMap



## JOHN TALLY

Principal and Qualifying Broker  
205.757.0237  
john@tallybhm.com

# Tally