



**Keegan & Coppin**  
COMPANY, INC.

FOR LEASE

435 EXECUTIVE COURT  
FAIRFIELD, CA

OFFICE/INDUSTRIAL SPACE

**MAKE AN OFFER**



Go beyond broker.

PRESENTED BY:

**KEVIN DORAN, PARTNER**  
LIC # 01704987 (707) 528-1400, EXT 270  
[KDORAN@KEEGANCOPPIN.COM](mailto:KDORAN@KEEGANCOPPIN.COM)

**DAN BORENSTEIN, AGENT**  
LIC # 02243256 (415) 461-1010, EXT 120  
[DBORENSTEIN@KEEGANCOPPIN.COM](mailto:DBORENSTEIN@KEEGANCOPPIN.COM)





# PROPERTY DETAILS



435 EXECUTIVE COURT  
FAIRFIELD, CA

## OFFICE/INDUSTRIAL SPACE FOR LEASE

### PROPERTY INFORMATION

#### HIGHLIGHTS

- 19,680+/- sf office/industrial for lease
- Power: 1,200+/- amps at 120/208 volts
- Large sever/telecom room
- Large break/lunch room
- Glass line-line on all way
- Grade level door option
- Multiple conference rooms
- Large open area workstations
- Large mail room
- Fully sprinklered

Owner will consider delivery of the space for one or two industrial warehouse users.

Owner will consider demising space into 2 units and adding grade-level roll-up doors.

**Owner ensures best efforts to deliver to most warehouse tenant requirements.**

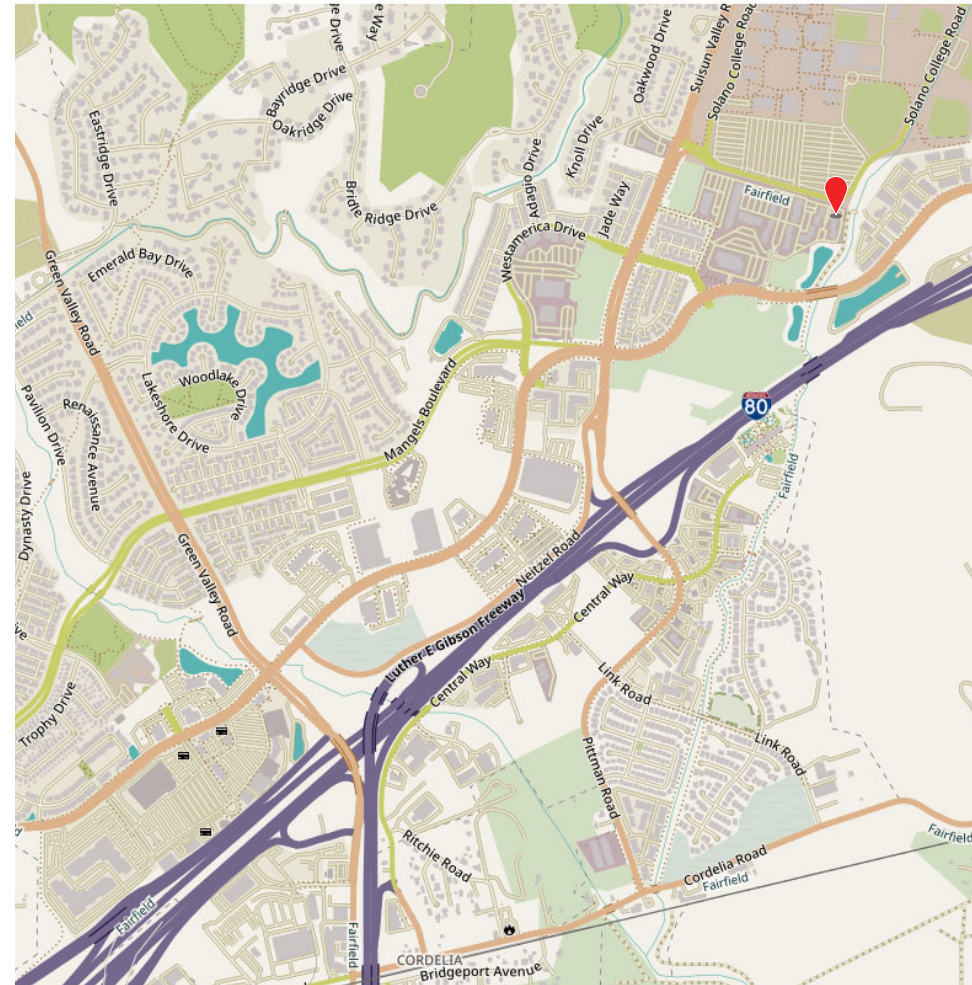
#### Parking

4.85 / 1,000+/-

#### LEASE TERMS

#### Rate

\$1.20 psf NNN



#### PRESENTED BY:

KEVIN DORAN, PARTNER  
KEEGAN & COPPIN CO., INC.  
LIC # 01704987 (707) 528-1400, EXT 270  
KDORAN@KEEGANCOPPIN.COM

DAN BORENSTEIN, AGENT  
KEEGAN & COPPIN CO., INC.  
LIC # 02243256 (415) 461-1010, EXT 120  
DBORENSTEIN@KEEGANCOPPIN.COM

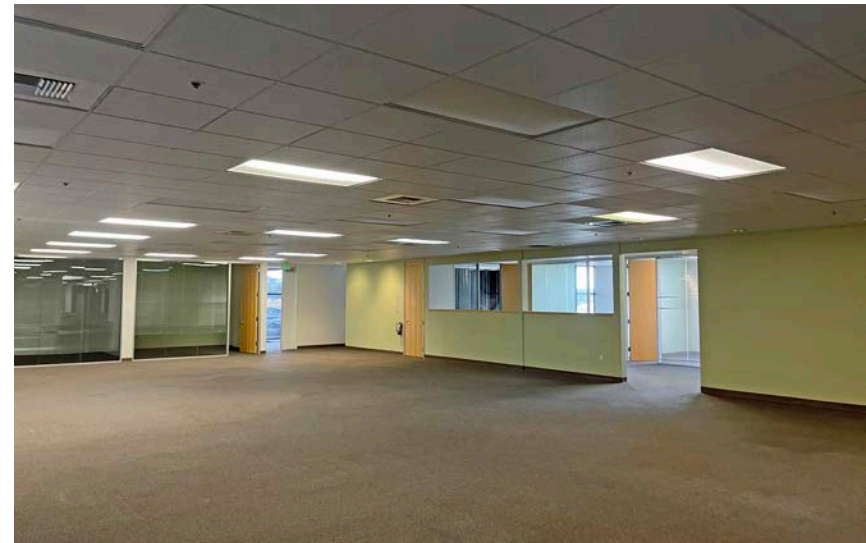
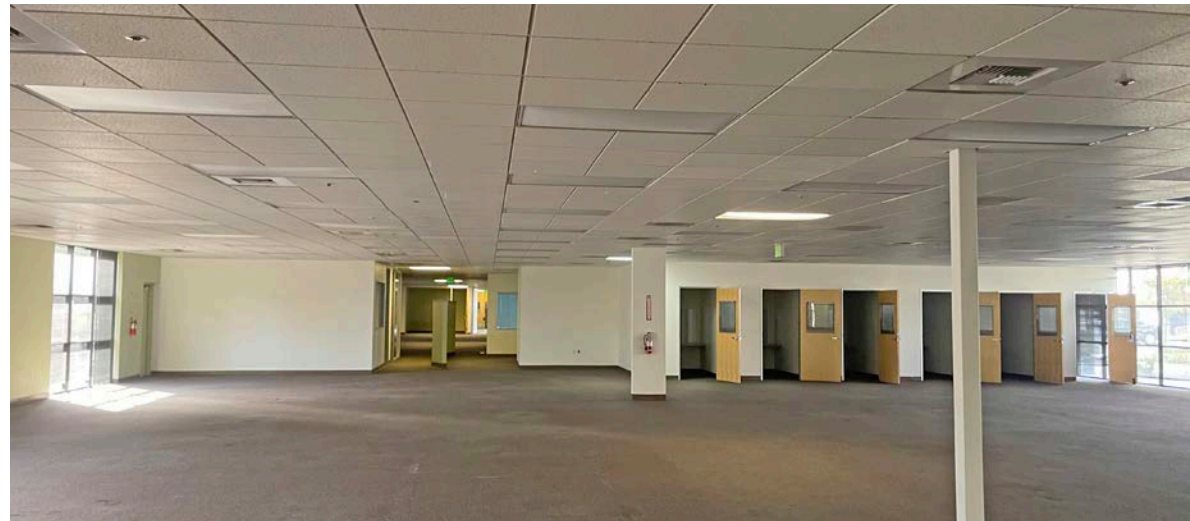
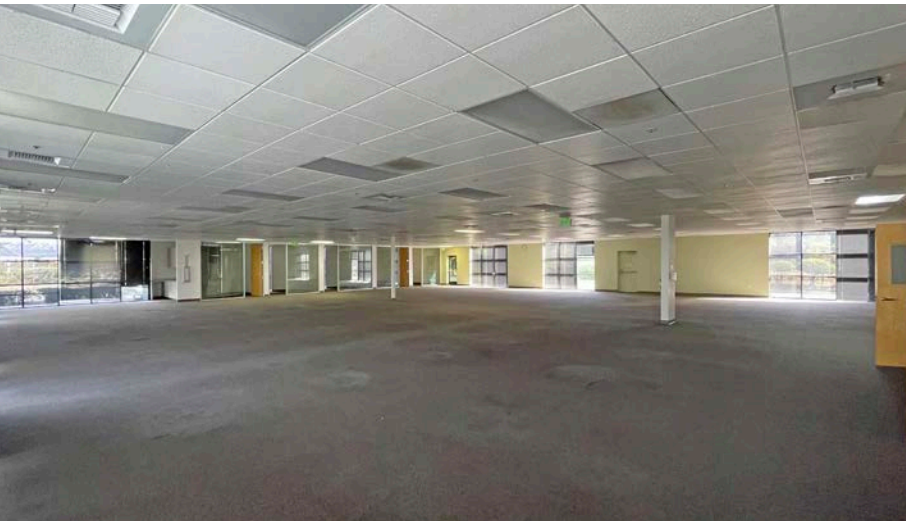


## PROPERTY PHOTOS



435 EXECUTIVE COURT  
FAIRFIELD, CA

OFFICE/INDUSTRIAL  
SPACE FOR LEASE



### PRESENTED BY:

KEVIN DORAN, PARTNER  
KEEGAN & COPPIN CO., INC.  
LIC # 01704987 (707) 528-1400, EXT 270  
KDORAN@KEEGANCOPPIN.COM

DAN BORENSTEIN, AGENT  
KEEGAN & COPPIN CO., INC.  
LIC # 02243256 (415) 461-1010, EXT 120  
DBORENSTEIN@KEEGANCOPPIN.COM



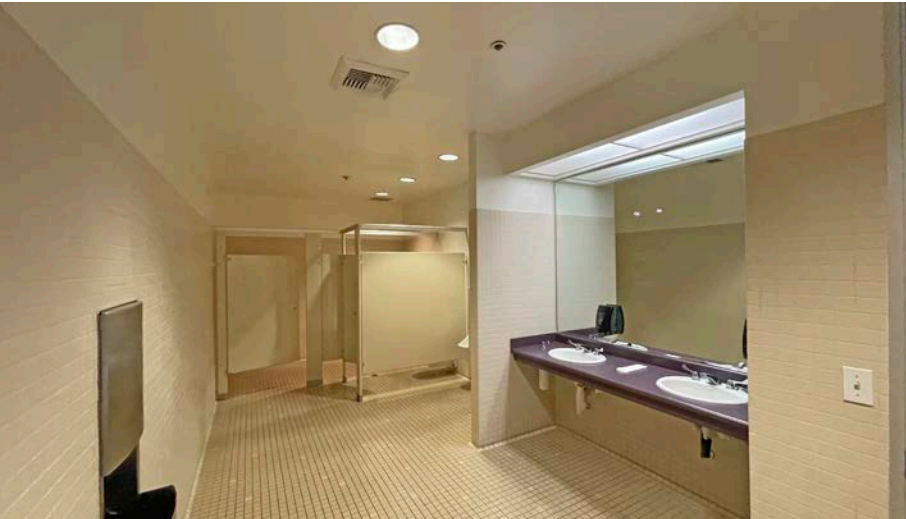


## PROPERTY PHOTOS



435 EXECUTIVE COURT  
FAIRFIELD, CA

OFFICE/INDUSTRIAL  
SPACE FOR LEASE



**PRESENTED BY:**

**KEVIN DORAN, PARTNER**  
**KEEGAN & COPPIN CO., INC.**  
LIC # 01704987 (707) 528-1400, EXT 270  
KDORAN@KEEGANCOPPIN.COM

**DAN BORENSTEIN, AGENT**  
**KEEGAN & COPPIN CO., INC.**  
LIC # 02243256 (415) 461-1010, EXT 120  
DBORENSTEIN@KEEGANCOPPIN.COM





# PROPERTY AERIALS



435 EXECUTIVE COURT  
FAIRFIELD, CA

OFFICE/INDUSTRIAL  
SPACE FOR LEASE



**PRESENTED BY:**

KEVIN DORAN, PARTNER  
KEEGAN & COPPIN CO., INC.  
LIC # 01704987 (707) 528-1400, EXT 270  
KDORAN@KEEGANCOPPIN.COM

DAN BORENSTEIN, AGENT  
KEEGAN & COPPIN CO., INC.  
LIC # 02243256 (415) 461-1010, EXT 120  
DBORENSTEIN@KEEGANCOPPIN.COM





## LOCATION MAP



435 EXECUTIVE COURT  
FAIRFIELD, CA

OFFICE/INDUSTRIAL  
SPACE FOR LEASE



Keegan & Coppin Co., Inc.  
1355 North Dutton Avenue  
Santa Rosa, CA 95401  
[www.keegancoppin.com](http://www.keegancoppin.com)  
(707) 528-1400

The above information, while not guaranteed, has been secured from sources we believe to be reliable. Submitted subject to error, change or withdrawal. An interested party should verify the status of the property and the information herein.

REPRESENTED BY:

**KEVIN DORAN, PARTNER**  
LIC # 01704987 (707) 528-1400, EXT 270  
[KDORAN@KEEGANCOPPIN.COM](mailto:KDORAN@KEEGANCOPPIN.COM)

**DAN BORENSTEIN, AGENT**  
LIC # 02243256 (415) 461-1010, EXT 120  
[DBORENSTEIN@KEEGANCOPPIN.COM](mailto:DBORENSTEIN@KEEGANCOPPIN.COM)