

# 275 CANAL STREET

BETWEEN BROADWAY  
& LAFAYETTE STREET

Full Floor Branding Opportunity

➤ 2nd Floor: 3,000 rsf  
Bordering SoHo and Tribeca

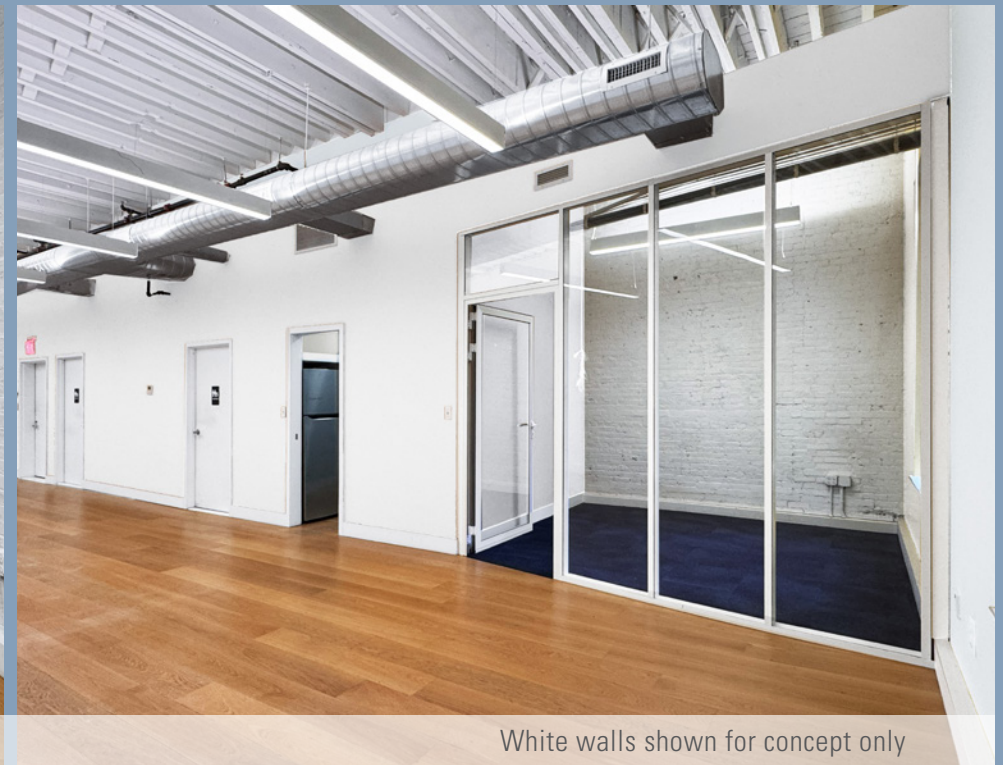
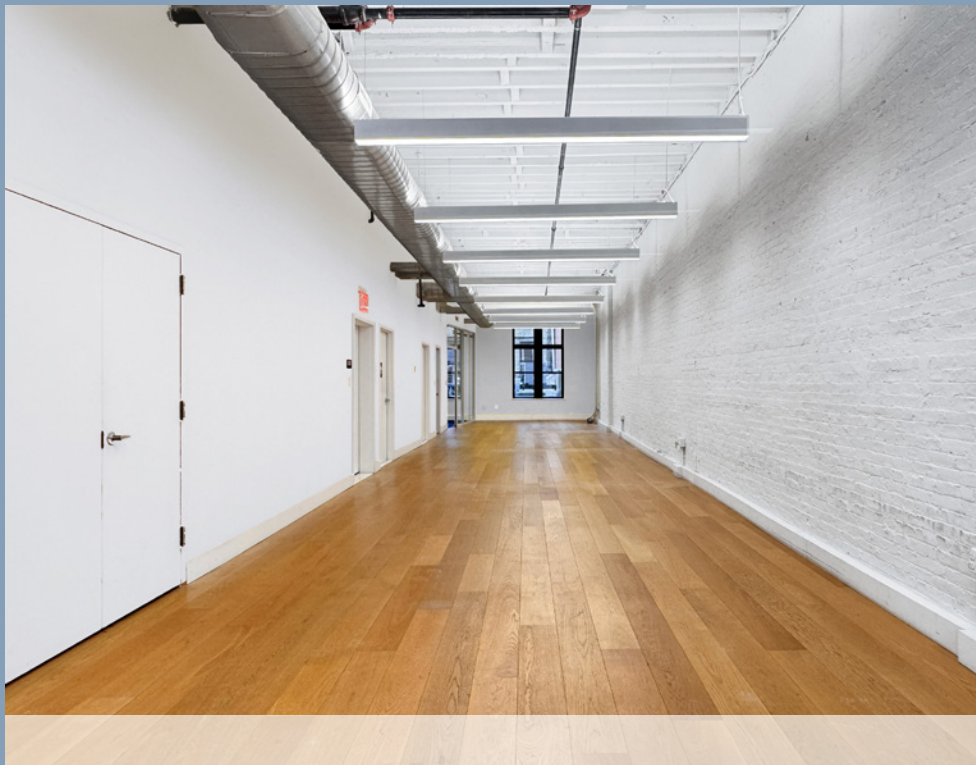
Steps from **N Q R W J Z 6** express  
and local subway lines along Canal St.



Storefront rendering - Five Guys coming soon

# ENTIRE 2ND FLOOR 3,000 RSF

Full floor presence offering direct elevator exposure and great visibility along the high pedestrian and vehicular Canal Street corridor. A great mix of private and open workspace with hardwood floors, glass-front finishes, energy efficient LED lighting, and exposed ceiling.



White walls shown for concept only

Immediate Occupancy

Rent Upon Request

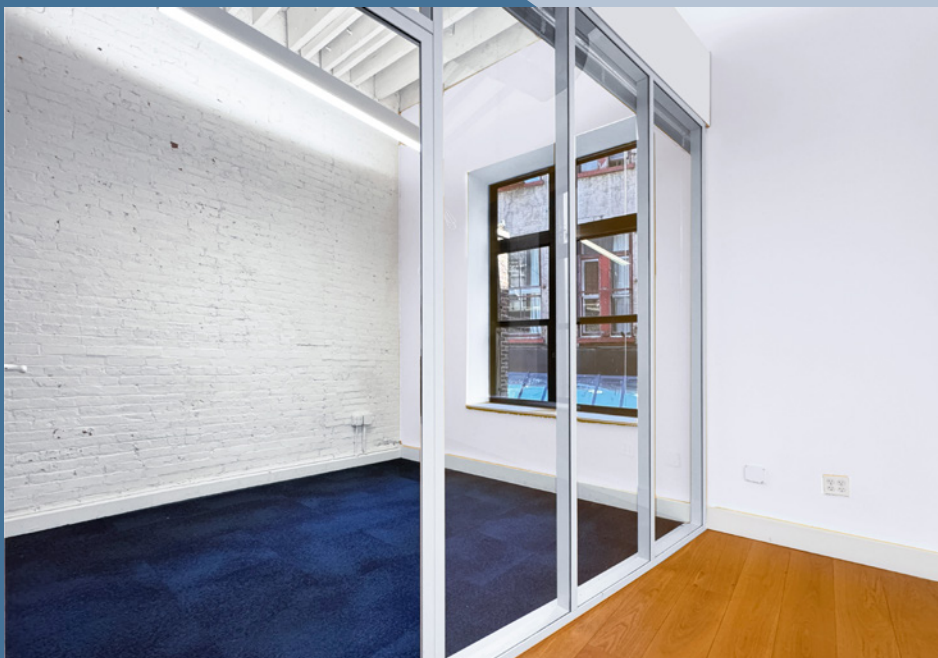
# ENTIRE 2ND FLOOR 3,000 RSF



**Conference Room**



**Windowed Private Workspaces**



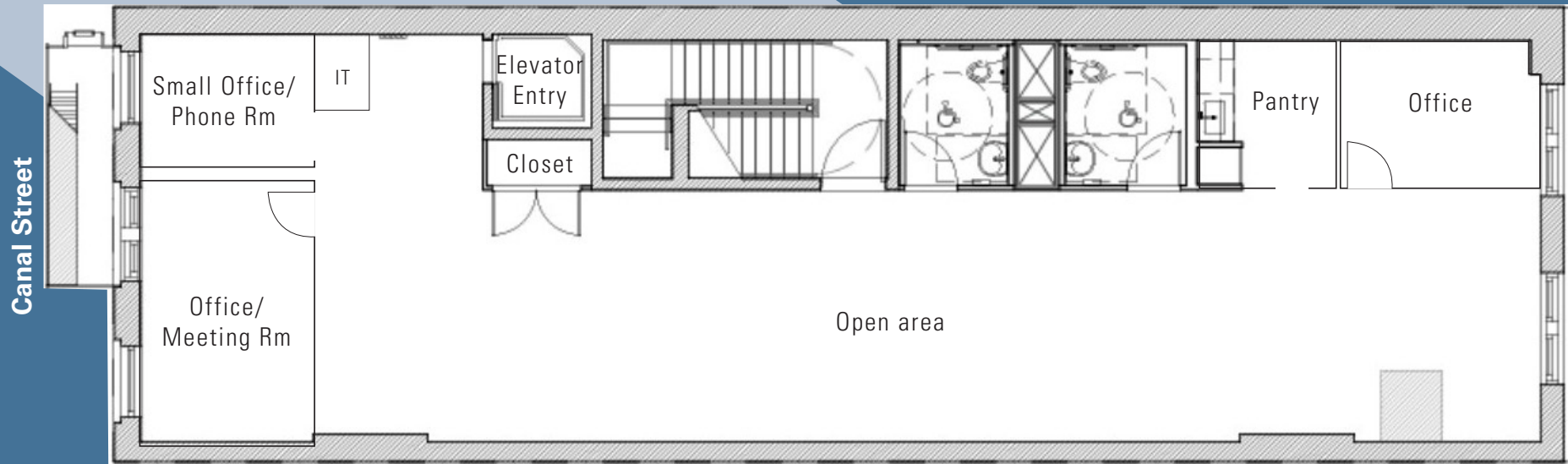
**Private Office**



**Wet Pantry**

# ENTIRE 2ND FLOOR 3,000 RSF

Virtual Tour



## FEATURING

- ✓ Flexible Open Plan Layout
- ✓ Glass-Front Finishes
- ✓ Hardwood Floors
- ✓ Two Sides of Natural Light
- ✓ Wet Pantry
- ✓ Private restrooms

Area tenants include Popeyes Louisiana Kitchen, Spring Café, 7-Eleven, TD Bank, Chase Bank, Mixue, Bank of America, Heytea, AT&T, New York Pilates, 2nd Street SoHo, Blue Dove Coffee, Empire Luggage, La Mercerie



For further information and/or inspection contact:

**Daria Ghasemi**

Senior Associate

Licensed Real Estate Salesperson

646.439.2002 | [dghasemi@absre.com](mailto:dghasemi@absre.com)

**Ben Waller**

Partner

Licensed Associate Real Estate Broker

212.400.9515 | [bwaller@absre.com](mailto:bwaller@absre.com)

**Zoe Snow**

Senior Associate

Licensed Real Estate Salesperson

646.439.2000 | [zsnow@absre.com](mailto:zsnow@absre.com)

ABS Partners Real Estate • 200 Park Avenue South, 10th Floor, New York, NY 10003 • 212.400.6060 • [www.absre.com](http://www.absre.com)