

FORMER RITE AID LOCATION - WINCHESTER, NH

10 Main Street, Winchester, NH 03222



PROPERTY DESCRIPTION

This former Rite Aid site offers a unique chance to reposition or redevelop a high-visibility property along Winchester's primary commercial corridor. Situated on a sizable corner lot with direct frontage on Route 10, the property boasts strong infrastructure, excellent exposure, and steady traffic. The property is well positioned to support a variety of uses including medical, value retail, food service, community facilities, or multi-tenant conversion. With its strategic location, strong roadside presence, and the limited local commercial supply, 10 Main Street stands ready for its next chapter.



PROPERTY HIGHLIGHTS

- Flexible zoning supports multiple reuse options
- Prime Main Street/Route 10 visibility
- Limited local commercial supply
- Existing building shell reduces timeline vs. new build

OFFERING SUMMARY

Sale Price:	\$1,175,000
Lease Rate:	\$9.00 SF/yr (NNN)
Lot Size:	4.3 Acres
Building Size:	11,092 SF

We obtained the information above from sources we believe to be reliable. However, we have not verified its accuracy and make no guarantee, warranty or representation about it. It is submitted subject to the possibility of errors, omissions, change of price, rental or other conditions, prior sale, lease or financing, or withdrawal without notice. We include projections, opinions, assumptions or estimates for example only, and they may not represent current or future performance of the property. You and your tax and legal advisors should conduct your own investigation of the property and transaction.

DAVE GARVEY
Managing Director
O: 603.610.8523
C: 603.491.2854
dave@kwclcg.com
NH #004637

WHITNEY TAYLOR
Commercial Specialist
O: 978.228.1055
C: 978.228.1055
whitney@kwclcg.com
NH #080690

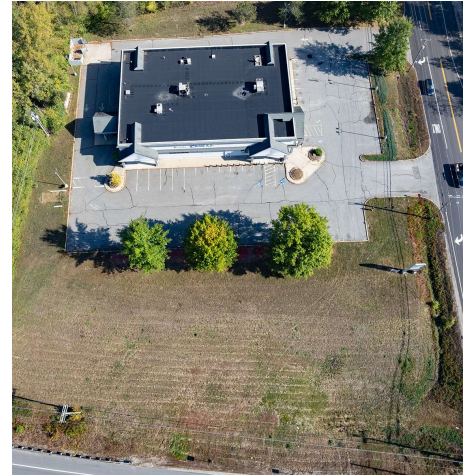
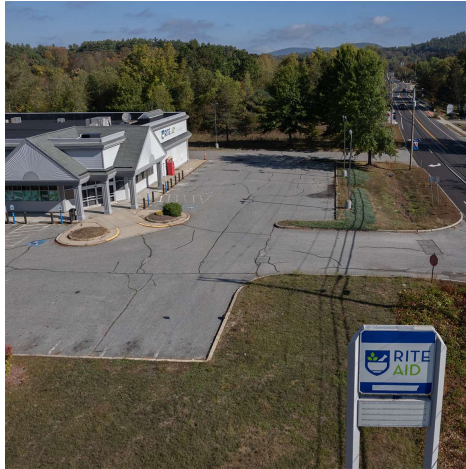
ETHAN ASH
Commercial & Investment Specialist, MiCP
O: 603.610.8500 X1430
C: 603.707.2319
ethan.ash@kw.com
NH #071469

KELLER WILLIAMS COASTAL REALTY
603.610.8500
750 Lafayette Rd.
Suite 201 - Coastal Land & Commercial Group
Portsmouth, NH 03801

RETAIL FOR SALE & LEASE

FORMER RITE AID LOCATION - WINCHESTER, NH

10 Main Street, Winchester, NH 03222



We obtained the information above from sources we believe to be reliable. However, we have not verified its accuracy and make no guarantee, warranty or representation about it. It is submitted subject to the possibility of errors, omissions, change of price, rental or other conditions, prior sale, lease or financing, or withdrawal without notice. We include projections, opinions, assumptions or estimates for example only, and they may not represent current or future performance of the property. You and your tax and legal advisors should conduct your own investigation of the property and transaction.

DAVE GARVEY
Managing Director
O: 603.610.8523
C: 603.491.2854
dave@kwclcg.com
NH #004637

WHITNEY TAYLOR
Commercial Specialist
O: 978.228.1055
C: 978.228.1055
whitney@kwclcg.com
NH #080690

ETHAN ASH
Commercial & Investment Specialist, MiCP
O: 603.610.8500 X1430
C: 603.707.2319
ethan.ash@kw.com
NH #071469

KELLER WILLIAMS COASTAL REALTY
603.610.8500
750 Lafayette Rd.
Suite 201 - Coastal Land & Commercial Group
Portsmouth, NH 03801

Each Office Independently Owned and Operated kwclcg.com

RETAIL FOR SALE & LEASE

FORMER RITE AID LOCATION - WINCHESTER, NH

10 Main Street, Winchester, NH 03222



We obtained the information above from sources we believe to be reliable. However, we have not verified its accuracy and make no guarantee, warranty or representation about it. It is submitted subject to the possibility of errors, omissions, change of price, rental or other conditions, prior sale, lease or financing, or withdrawal without notice. We include projections, opinions, assumptions or estimates for example only, and they may not represent current or future performance of the property. You and your tax and legal advisors should conduct your own investigation of the property and transaction.

DAVE GARVEY
Managing Director
O: 603.610.8523
C: 603.491.2854
dave@kwclcg.com
NH #004637

WHITNEY TAYLOR
Commercial Specialist
O: 978.228.1055
C: 978.228.1055
whitney@kwclcg.com
NH #080690

ETHAN ASH
Commercial & Investment Specialist, MiCP
O: 603.610.8500 X1430
C: 603.707.2319
ethan.ash@kw.com
NH #071469

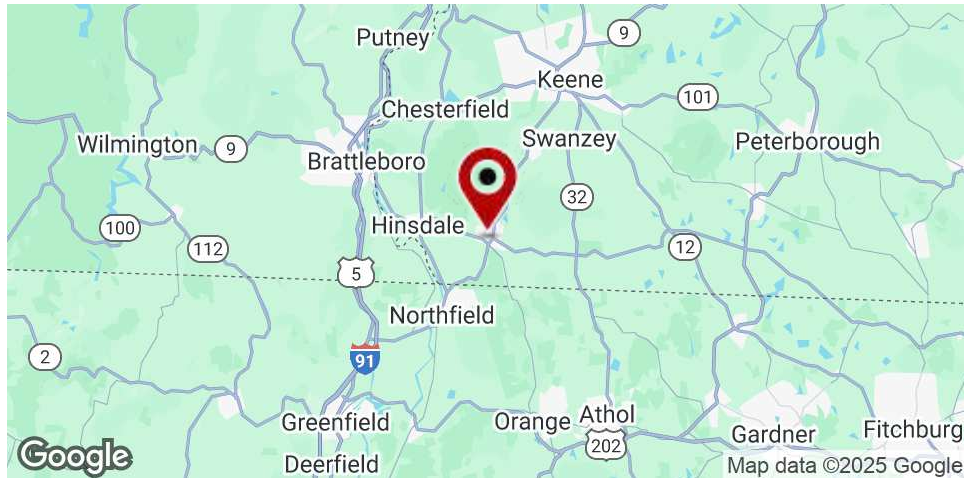
KELLER WILLIAMS COASTAL REALTY

603.610.8500
750 Lafayette Rd.
Suite 201 - Coastal Land & Commercial Group
Portsmouth, NH 03801

Each Office Independently Owned and Operated kwclcg.com

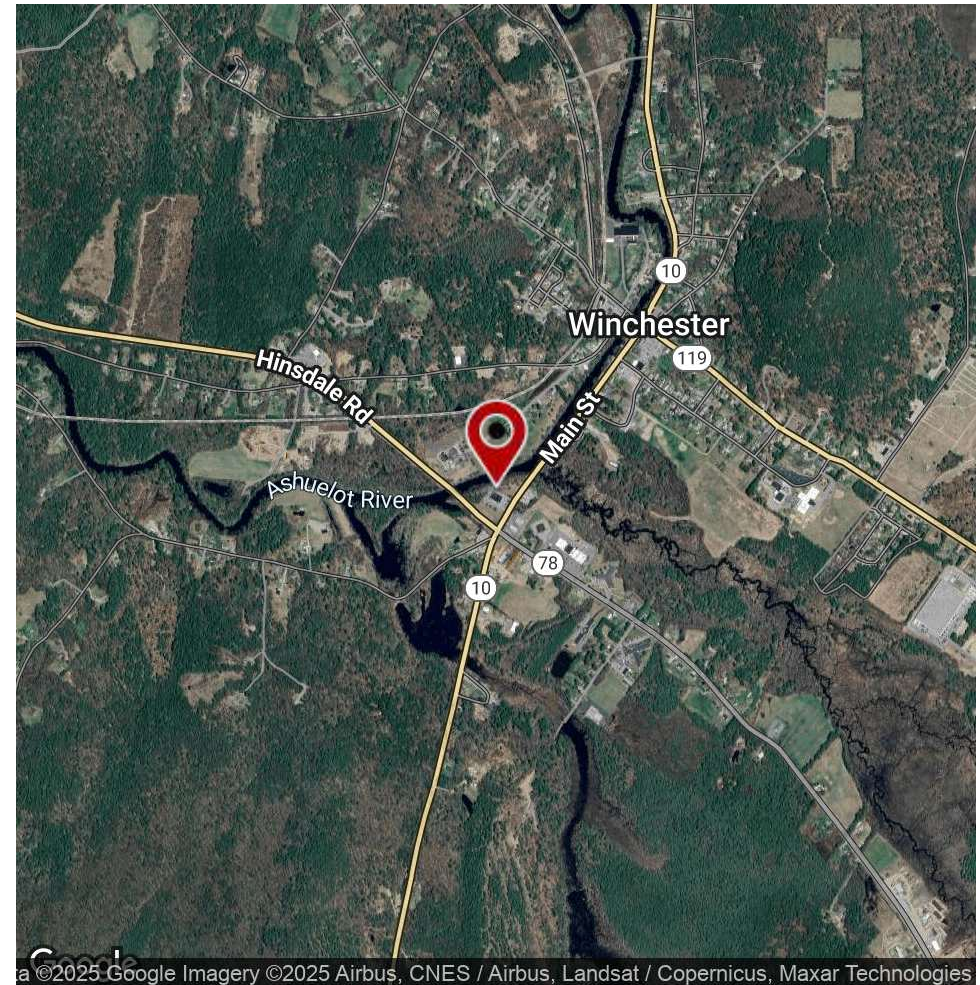
FORMER RITE AID LOCATION - WINCHESTER, NH

10 Main Street, Winchester, NH 03222



LOCATION OVERVIEW

10 Winchester Street sits prominently on Main Street (Route 10), Winchester's primary commercial corridor, with strong visibility and steady traffic counts. It is located near established anchors including Family Dollar, local banks, and municipal buildings, enhancing its exposure within the downtown setting.



We obtained the information above from sources we believe to be reliable. However, we have not verified its accuracy and make no guarantee, warranty or representation about it. It is submitted subject to the possibility of errors, omissions, change of price, rental or other conditions, prior sale, lease or financing, or withdrawal without notice. We include projections, opinions, assumptions or estimates for example only, and they may not represent current or future performance of the property. You and your tax and legal advisors should conduct your own investigation of the property and transaction.

DAVE GARVEY
Managing Director
O: 603.610.8523
C: 603.491.2854
dave@kwclcg.com
NH #004637

WHITNEY TAYLOR
Commercial Specialist
O: 978.228.1055
C: 978.228.1055
whitney@kwclcg.com
NH #080690

ETHAN ASH
Commercial & Investment Specialist, MiCP
O: 603.610.8500 X1430
C: 603.707.2319
ethan.ash@kw.com
NH #071469

KELLER WILLIAMS COASTAL REALTY
603.610.8500
750 Lafayette Rd.
Suite 201 - Coastal Land & Commercial Group
Portsmouth, NH 03801

RETAIL FOR SALE & LEASE

FORMER RITE AID LOCATION - WINCHESTER, NH

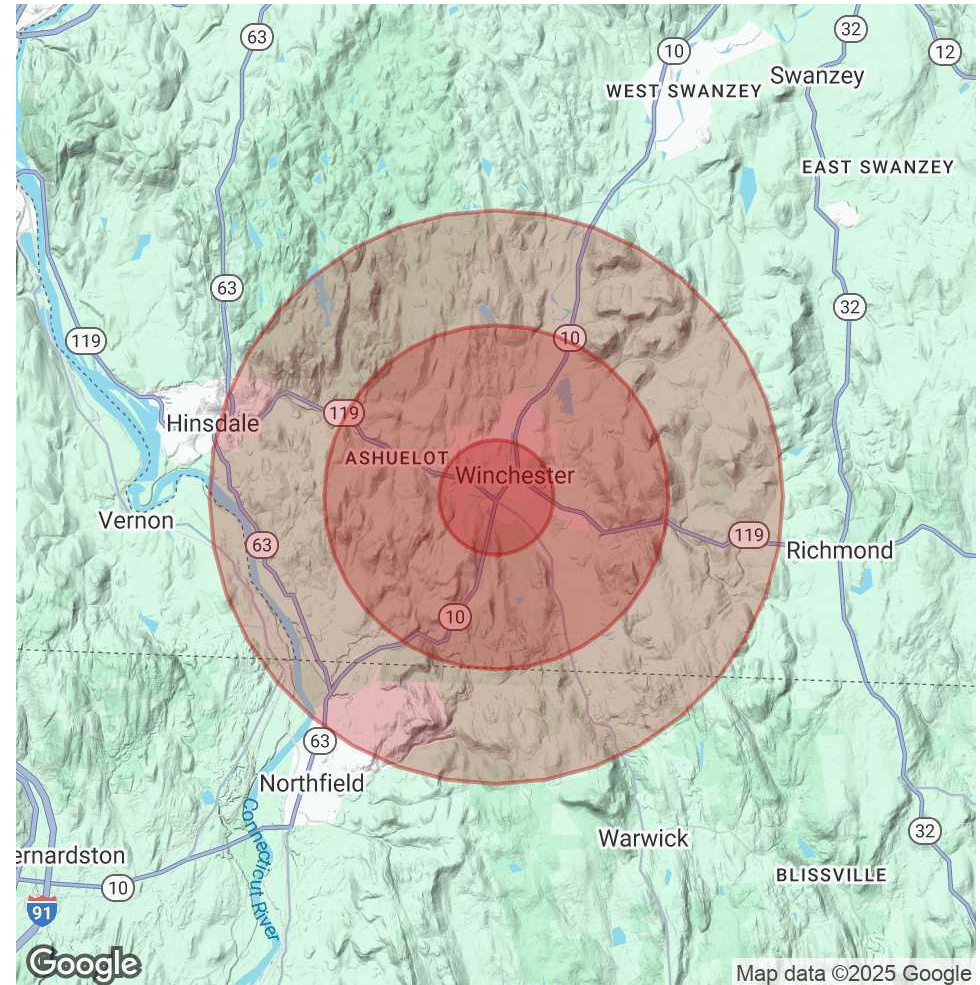
10 Main Street, Winchester, NH 03222



POPULATION	1 MILE	3 MILES	5 MILES
Total Population	1,332	3,298	6,176
Average Age	45	45	45
Average Age (Male)	43	43	44
Average Age (Female)	46	46	46

HOUSEHOLDS & INCOME	1 MILE	3 MILES	5 MILES
Total Households	562	1,392	2,620
# of Persons per HH	2.4	2.4	2.4
Average HH Income	\$83,022	\$82,028	\$87,102
Average House Value	\$219,091	\$222,149	\$244,367

Demographics data derived from AlphaMap



We obtained the information above from sources we believe to be reliable. However, we have not verified its accuracy and make no guarantee, warranty or representation about it. It is submitted subject to the possibility of errors, omissions, change of price, rental or other conditions, prior sale, lease or financing, or withdrawal without notice. We include projections, opinions, assumptions or estimates for example only, and they may not represent current or future performance of the property. You and your tax and legal advisors should conduct your own investigation of the property and transaction.

DAVE GARVEY
Managing Director
O: 603.610.8523
C: 603.491.2854
dave@kwclcg.com
NH #004637

WHITNEY TAYLOR
Commercial Specialist
O: 978.228.1055
C: 978.228.1055
whitney@kwclcg.com
NH #080690

ETHAN ASH
Commercial & Investment Specialist, MiCP
O: 603.610.8500 X1430
C: 603.707.2319
ethan.ash@kw.com
NH #071469

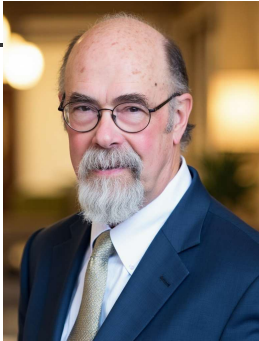
KELLER WILLIAMS COASTAL REALTY
603.610.8500
750 Lafayette Rd.
Suite 201 - Coastal Land & Commercial Group
Portsmouth, NH 03801

Each Office Independently Owned and Operated kwclcg.com

RETAIL FOR SALE & LEASE

FORMER RITE AID LOCATION - WINCHESTER, NH

10 Main Street, Winchester, NH 03222



DAVE GARVEY

Managing Director

Direct: 603.610.8523 **Cell:** 603.491.2854
dave@kwclcg.com

NH #004637 // ME #BR912042



WHITNEY TAYLOR

Commercial Specialist

Direct: 978.228.1055 **Cell:** 978.228.1055
whitney@kwclcg.com

NH #080690 // MA #1000744



ETHAN ASH

Commercial & Investment Specialist, MiCP

Direct: 603.610.8500 x1430 **Cell:** 603.707.2319
ethan.ash@kw.com

NH #071469 // ME #BA920524 MA #9575540

We obtained the information above from sources we believe to be reliable. However, we have not verified its accuracy and make no guarantee, warranty or representation about it. It is submitted subject to the possibility of errors, omissions, change of price, rental or other conditions, prior sale, lease or financing, or withdrawal without notice. We include projections, opinions, assumptions or estimates for example only, and they may not represent current or future performance of the property. You and your tax and legal advisors should conduct your own investigation of the property and transaction.

DAVE GARVEY
Managing Director
O: 603.610.8523
C: 603.491.2854
dave@kwclcg.com
NH #004637

WHITNEY TAYLOR
Commercial Specialist
O: 978.228.1055
C: 978.228.1055
whitney@kwclcg.com
NH #080690

ETHAN ASH
Commercial & Investment Specialist, MiCP
O: 603.610.8500 X1430
C: 603.707.2319
ethan.ash@kw.com
NH #071469

KELLER WILLIAMS COASTAL REALTY
603.610.8500
750 Lafayette Rd.
Suite 201 - Coastal Land & Commercial Group
Portsmouth, NH 03801

Each Office Independently Owned and Operated **kwclcg.com**