

800 EL CAMINO REAL

MOUNTAIN VIEW, CA

±3,840 SF AVAILABLE

LOCATED @ CASTRO & EL CAMINO REAL

±120,000 SF CLASS A PROJECT IN DOWNTOWN MOUNTAIN VIEW

NEWMARK

CHERIE WITTRY 650.688.8523 cherie.wittry@nrmk.com CA RE License #00863251

CARTER LYMAN 650.688.8559 carter.lyman@nrmk.com CA RE License #02067725

Property Manager - Rees Properties

DENISE ANSTETT 650.941.4282 danstett@rproperties.com

PROJECT HIGHLIGHTS



Suite#	SF	Date Available	Comments
--------	----	----------------	----------

255	±3,840 SF	Available Now	3 Window Office/Conference Rooms, Open Area, to Add Kitchen, FFE Available
-----	-----------	---------------	--



BUILDING

Class A 4-Story Office Building

Extensive Glass and Windowline Throughout

Local Management

Showers on 3rd Floor



LOCATION

High Identity Location

Corner - El Camino Real and Castro Street

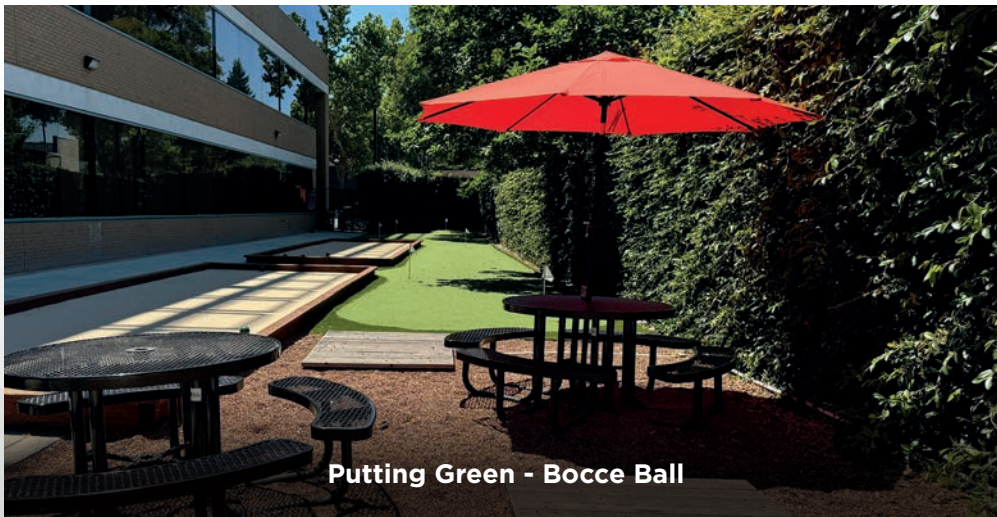
Walk to All Downtown Mountain View Food & Entertainment Amenities, Eagle Park Swim Center & Bullet Stop Caltrain/VTA



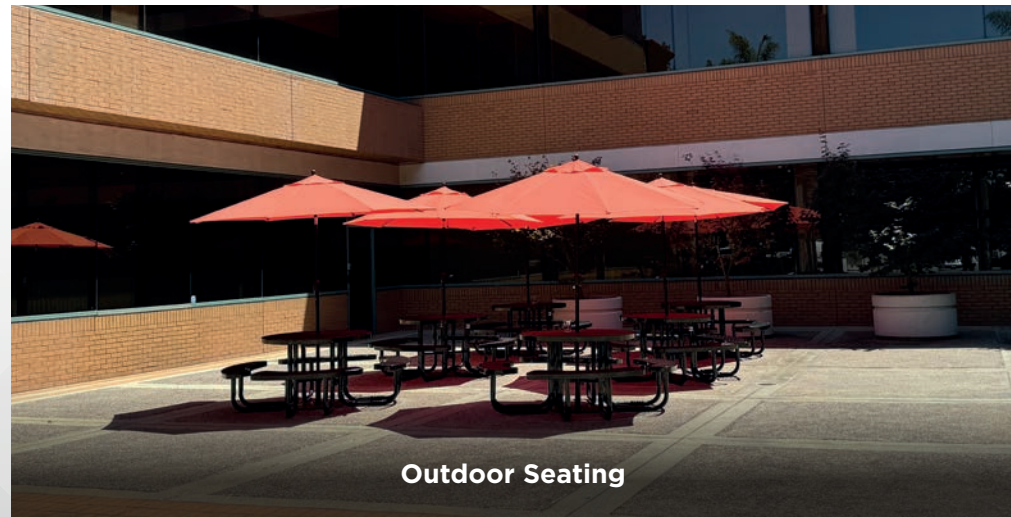
PARKING

2.9/1000 On-Site Parking + Street Parking

2 Levels Covered Parking and Surface Visitor Parking



Putting Green - Bocce Ball

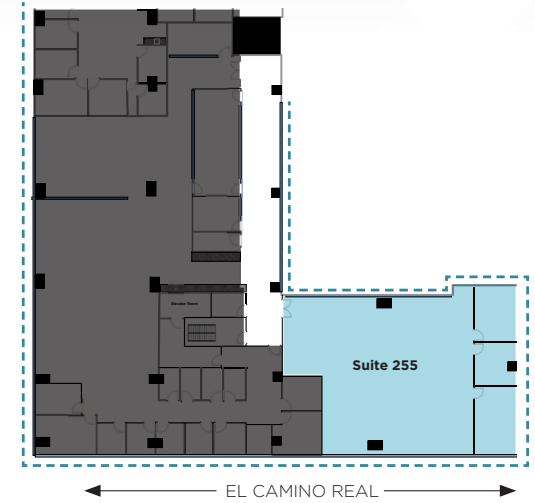
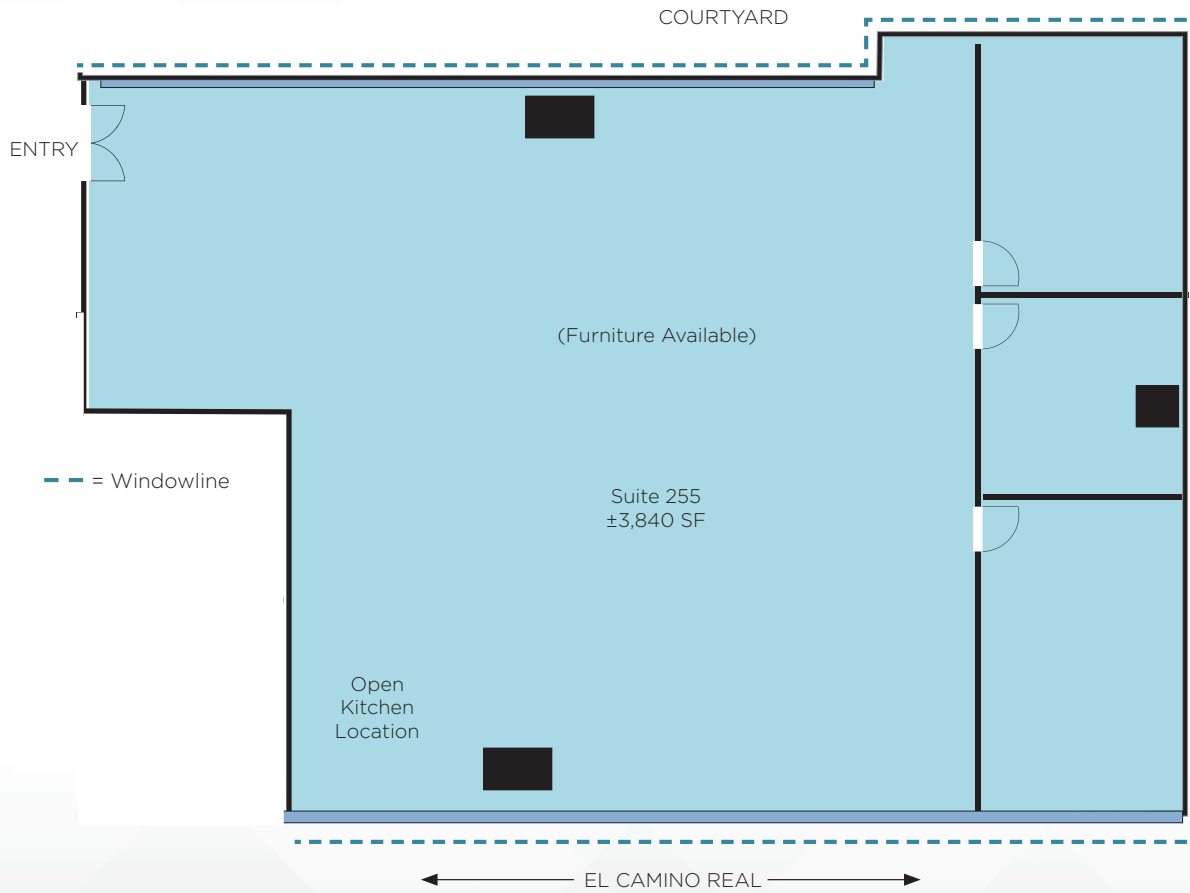


Outdoor Seating

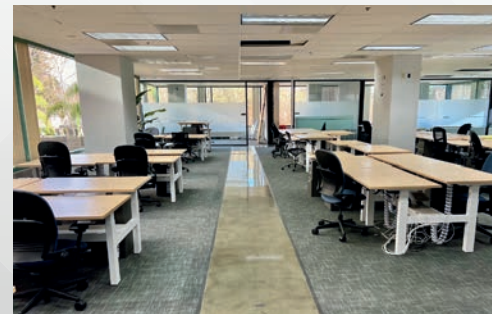
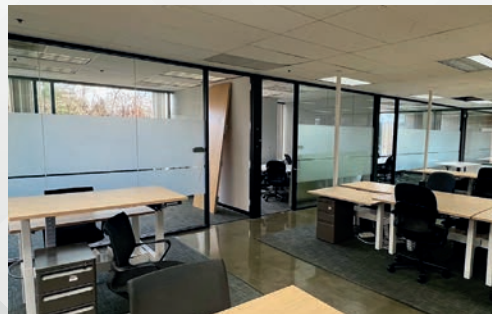
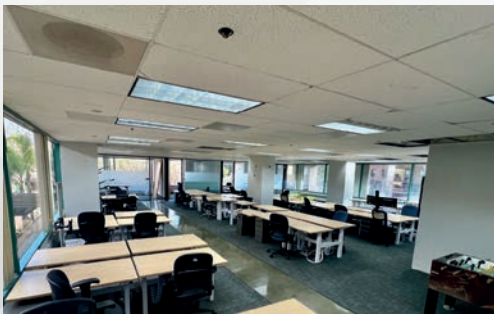
FLOOR PLAN

Suite 255: ±3,840 SF
Available Now

800
EL CAMINO REAL



- 3 Window Office/Conference Rooms
- Open Area
- To Add Kitchen
- FFE Available



800 EL CAMINO REAL

MOUNTAIN VIEW, CA

CHERIE WITTRY 650.688.8523 cherie.wittry@nmrk.com CA RE License #00863251
CARTER LYMAN 650.688.8559 carter.lyman@nmrk.com CA RE License #02067725

Property Manager - Rees Properties
DENISE ANSTETT 650.941.4282 danstett@rproperties.com

NEWMARK

The distributor of this communication is performing acts for which a real estate license is required. The information contained herein has been obtained from sources deemed reliable but has not been verified and no guarantee, warranty or representation, either express or implied, is made with respect to such information. Terms of sale or lease and availability are subject to change or withdrawal without notice. MP-148,08/24