



Property features

- 192,767± sf office park in South Orlando consisting of four single-story, free-standing buildings
- Upgraded directional signage and landscaping
- Roving security guard Monday through Friday from 5:00 pm until 9:00 pm
- Management office within close proximity
- Close by an abundance of shopping and eateries around Millenia Mall and Sand Lake Road\



Efficient floor plans



Abundant parking
(5.60/1,000 sf ratio)



Building signage available

For further information

avisonyoung.com

Lisa Bailey, SIOR

Principal

O +1 407 440 6645

lisa.bailey@avisonyoung.com

Property availability

6101-6251 Chancellor Drive
Orlando, FL 32809



Available spaces

Building	Suite	Square Footage	Condition
6101	1000	46,886	Office Space
6101	1130	5,827± sf	Shell space
6101	1140	8,500±sf	Office space

For further
information

avisonyoung.com

Lisa Bailey, SIOR
Principal
O +1 407 440 6645
lisa.bailey@avisonyoung.com

Property photos

6101-6251 Chancellor Drive
Orlando, FL 32809



For further information

avisonyoung.com

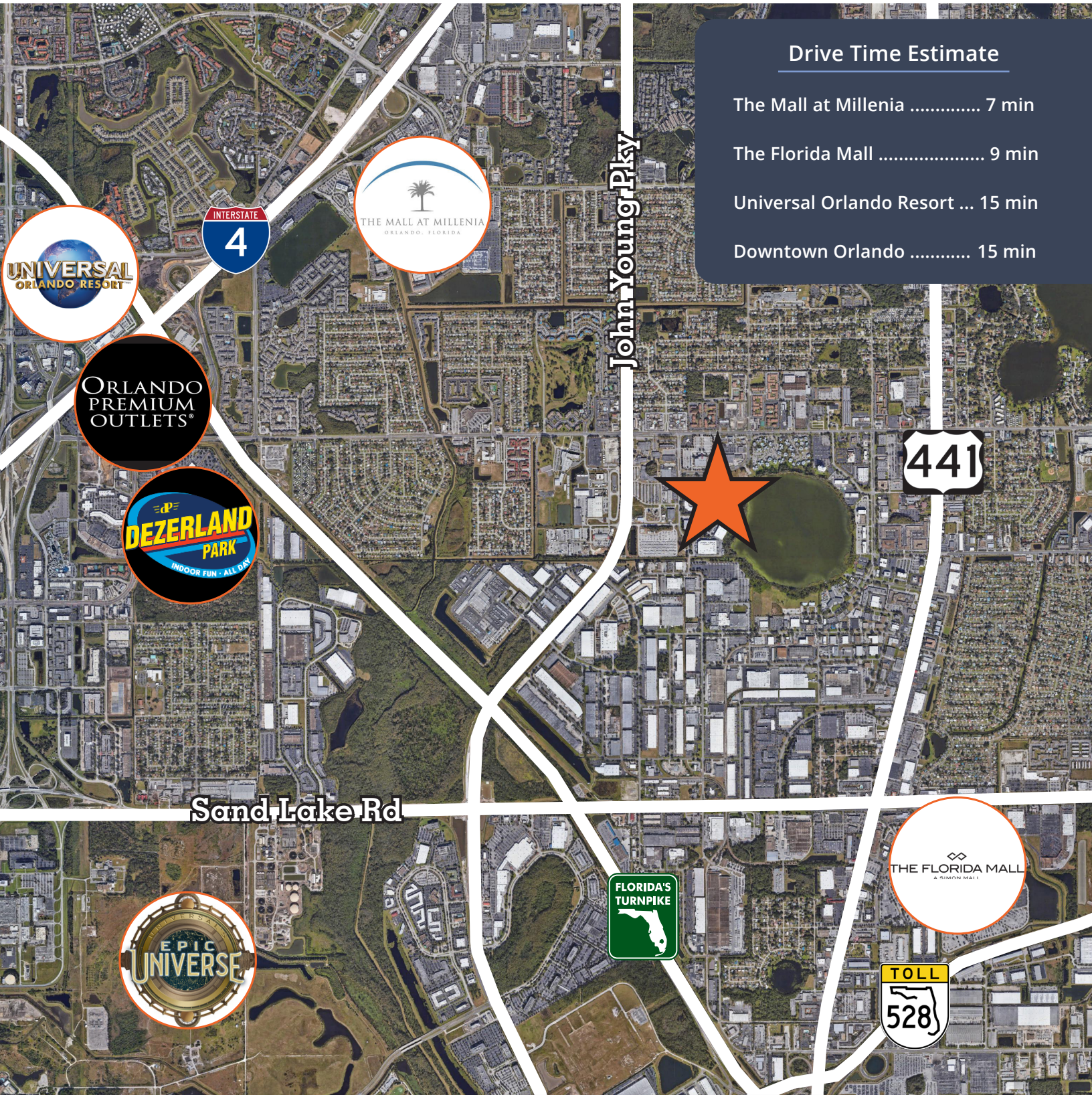
Lisa Bailey, SIOR

Principal

O +1 407 440 6645

lisa.bailey@avisonyoung.com

© 2024 Avison Young - Florida, LLC. All rights reserved. E. & O.E.: The information contained herein was obtained from sources which we deem reliable and, while thought to be correct, is not guaranteed by Avison Young.



Drive Time Estimate

- The Mall at Millenia 7 min
- The Florida Mall 9 min
- Universal Orlando Resort ... 15 min
- Downtown Orlando 15 min

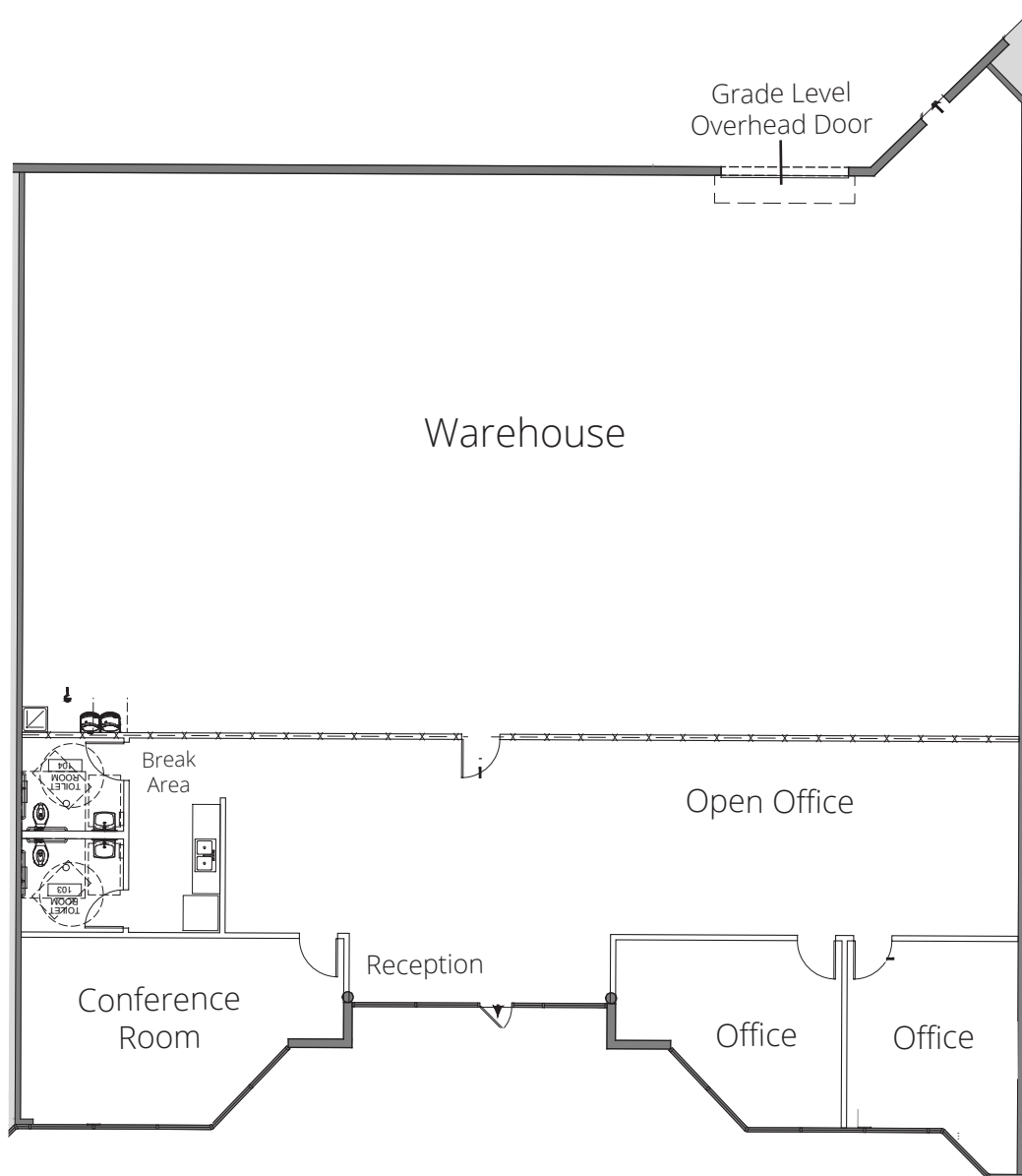
For further
information
avisonyoung.com

Lisa Bailey, SIOR
Principal
O +1 407 440 6645
lisa.bailey@avisonyoung.com

Building 6101

Suite 1130 - 5,827± SF

Proposed Floor Plan

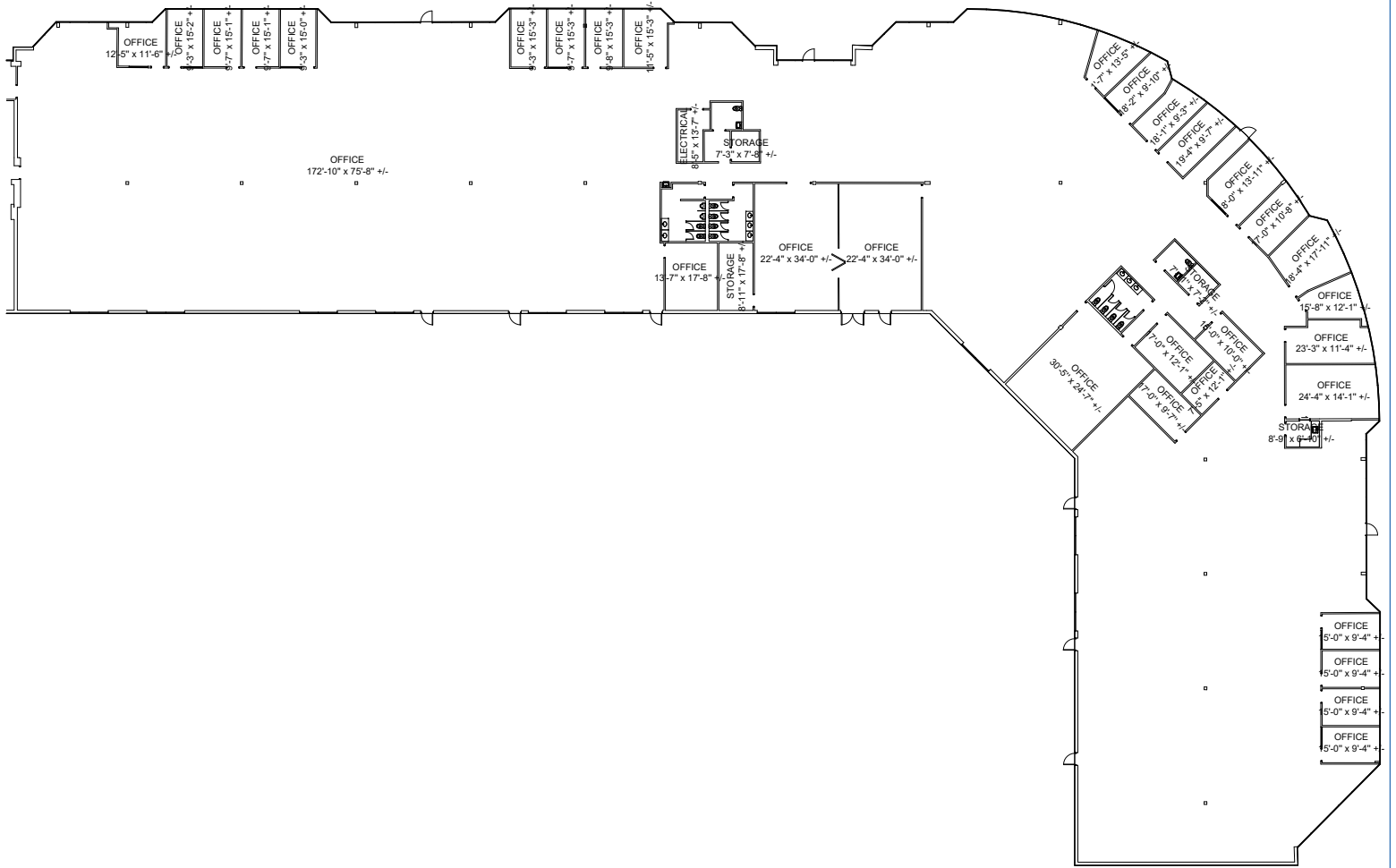


**For further
information**

avisonyoung.com

Lisa Bailey SIOR
Principal
O +1 407 440 6645
lisa.bailey@avisonyoung.com

Suite 1000 - 46,886± SF



For further information

avisonyoung.com

Lisa Bailey SIOR
Principal
O +1 407 440 6645
lisa.bailey@avisonyoung.com