



GITALIS
REAL
ESTATE

FOR LEASE



160 SPRINGHURST AVENUE
PARKDALE OFFICE SPACE



DETAILS

160 SPRINGHURST AVE - OFFICE SPACE FOR LEASE

SUITE 201 – 1,218 SQ. FT.

\$2,450/month GROSS

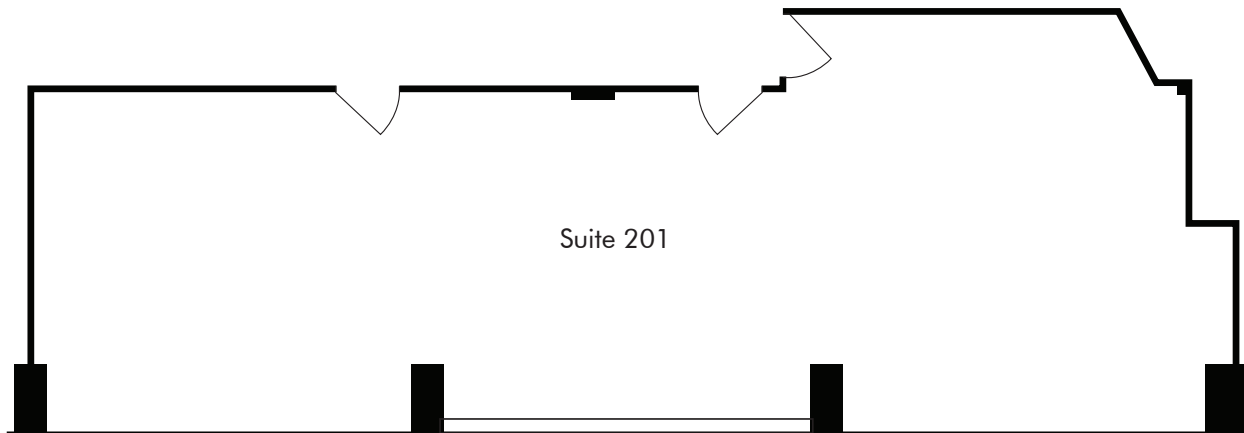
160 SPRINGHURST AVENUE

FOR LEASE

FLOOR PLAN

Availability

Suite 201 – 1,218 sq. ft.
Available Immediately



SUITE 209 – 5,273 SQ. FT.
\$25/sq. ft. GROSS

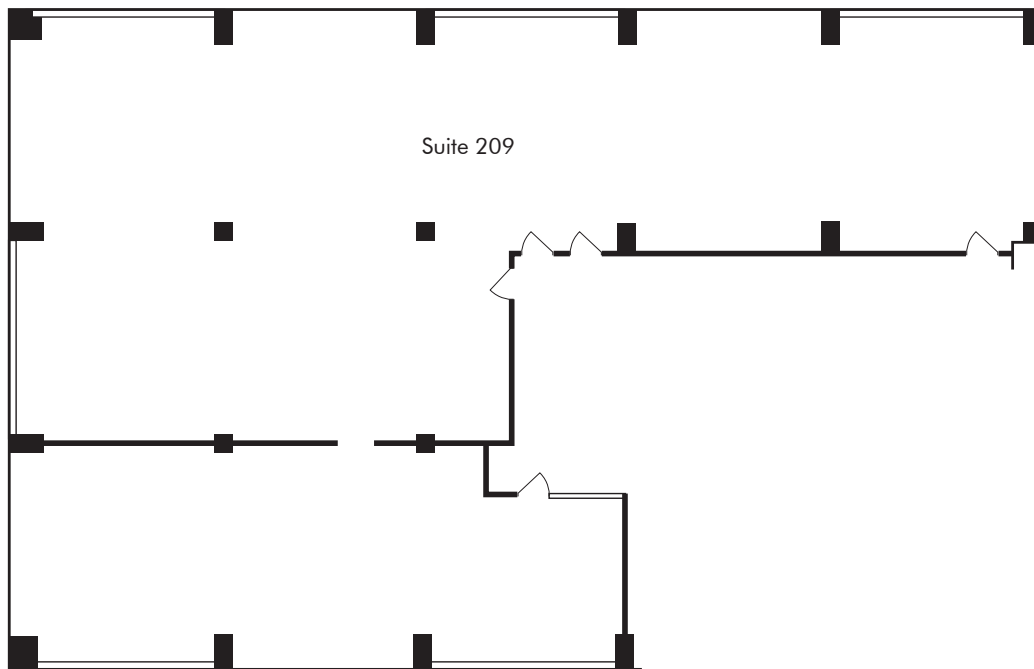
160 SPRINGHURST AVENUE

FOR LEASE

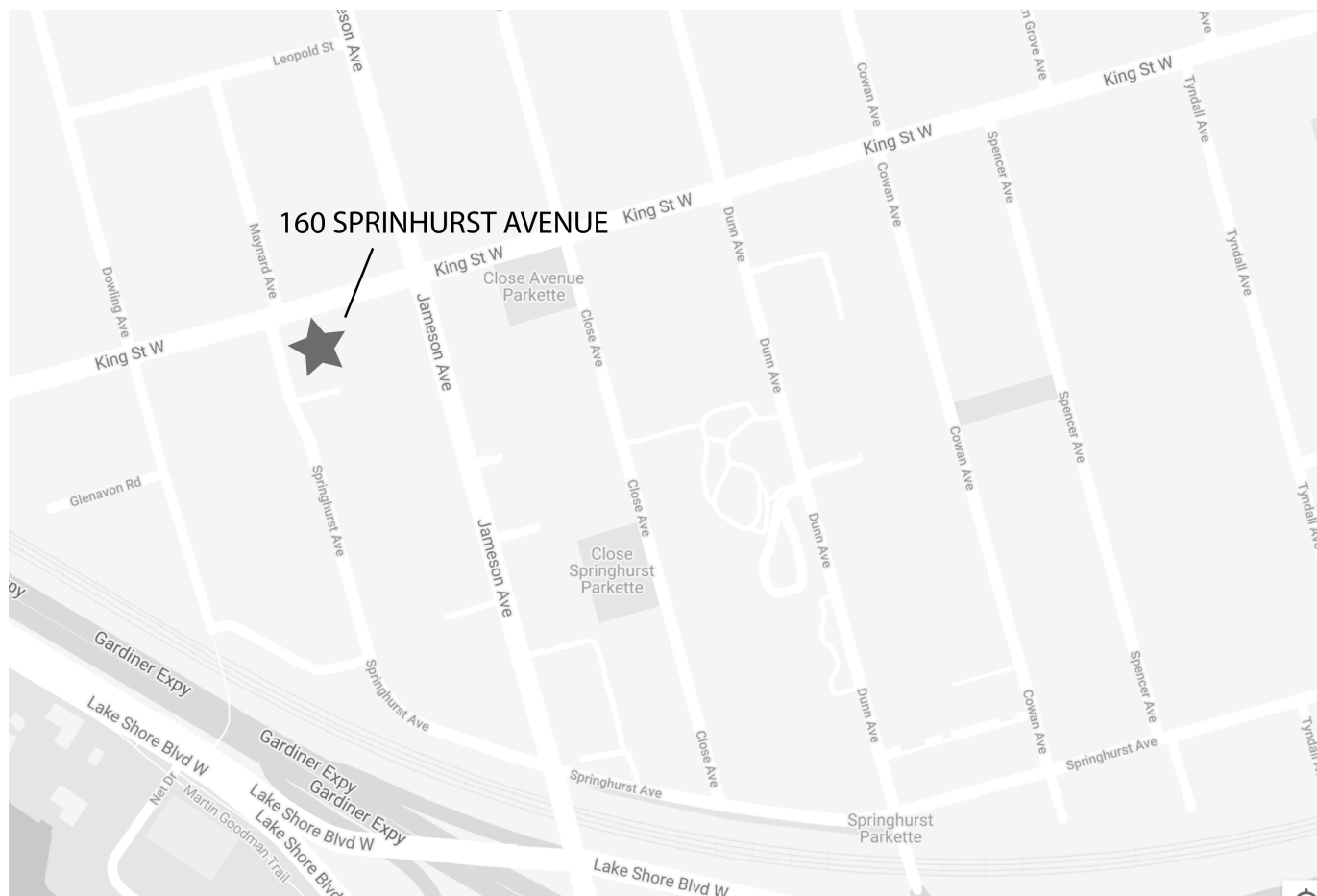
FLOOR PLAN

Availability

Suite 209 – 5,275 sq. ft. (Divisible)
Available Immediately







Walk Score
89

Very Walkable

Most errands can be accomplished on foot.

Transit Score
92

Rider's Paradise

World-class public transportation.

Bike Score
60

Bikeable

Some bike infrastructure.

Contact: Zev Gitalis, President
 Broker of Record
 Gitalis Real Estate Inc., Brokerage
 416-840-3444
 zev@gitalis.com

CONFIDENTIALITY AND LIMITING CONDITIONS

The information contained herein has been obtained from sources such made available to Gitalis Real Estate Inc. and does not purport to contain all the information a prospective Buyer may require. This package has been compiled solely for the convenience of prospective Buyers to assist them in their determination of whether they wish to express further interest in purchasing the property. This package does NOT form part of any terms or conditions of sale. Gitalis Real Estate Inc. has not independently verified any such information and assumes no responsibility for its accuracy or completeness and has no authority to bind Gitalis Real Estate Inc. to any representation or warranty.

Gitalis Real Estate Inc. expressly reserves the right, at their sole discretion, to reject any or all proposals or expressions of interest for the Property; to terminate discussions with any party at any time, with or without notice; to withdraw the fee simple interest in the Property from the market, at any time, with or without notice; and to negotiate and enter into binding agreements with respect to the interest with any party at any time, all without any compensation to any party in all cases.