



**FOR
SALE**

**549 E Ada Ave.
Glendora, CA 91741**



ABOUT THIS PROPERTY:

Rare opportunity in Glendora! This 6-bedroom, 3-bathroom home is located just minutes from Glendora Presbyterian Hospital and was previously licensed as a Congregate Living Facility—one of the most restrictive care licenses. While the license has lapsed, the property remains structurally improved for care-related uses, including wheelchair ramp access, widened doorways, accessible bathrooms/showers, and private exterior exits from bedrooms. The existing improvements may support faster licensing for uses such as Board & Care or RCFE (buyer to verify). Ideal for operators, investors, or buyers seeking a highly accessible property with flexible potential.

✓ 6 bedrooms

✓ 3 bathrooms

✓ 2,266 sqft.

✓ Year Built 1956

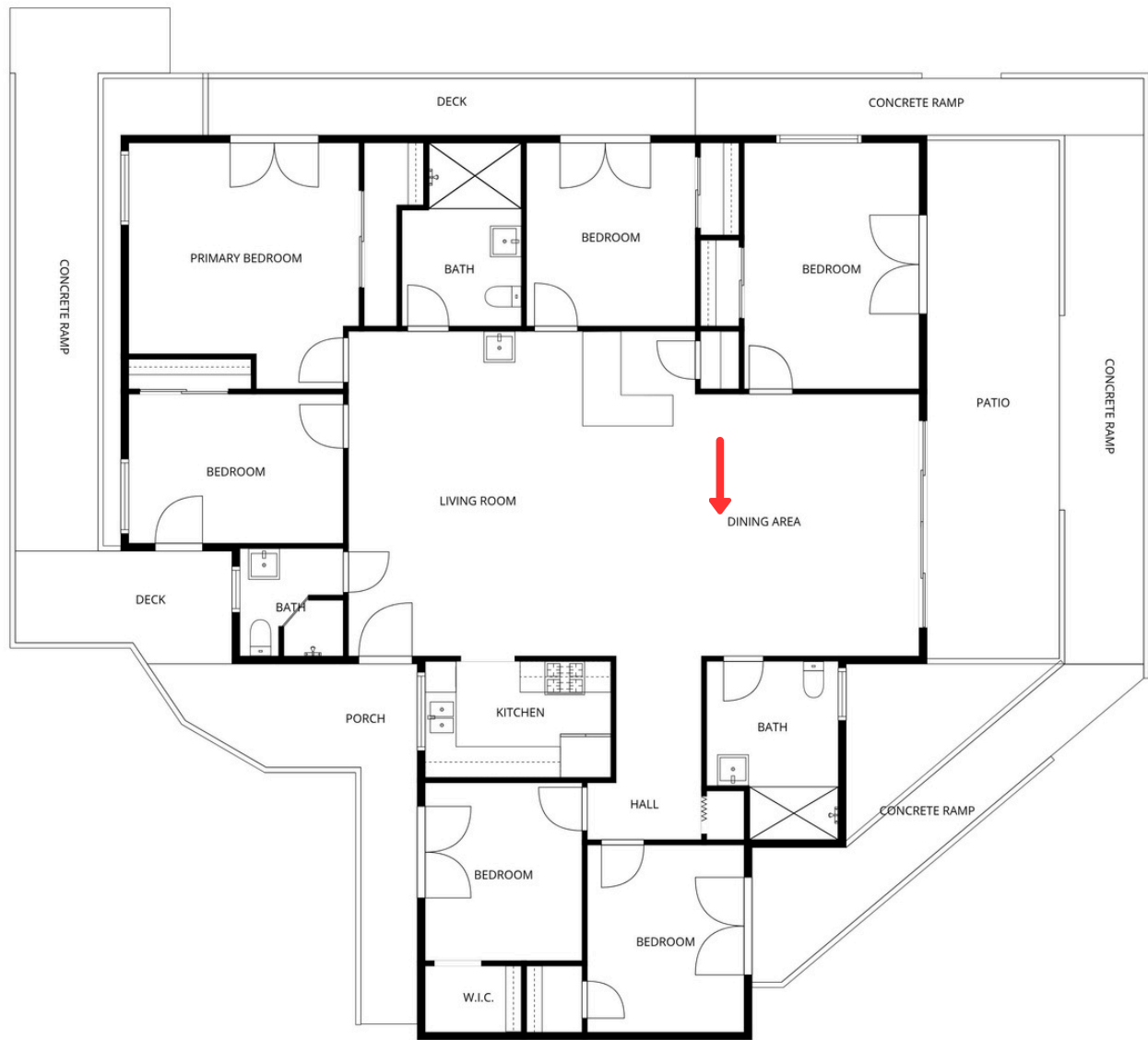
Danielle Fontes | KALEO Real Estate Company

☎ (626) 512-1826

✉ Danielle@FontesRealty.com

🌐 www.DanielleFontes.net

DRE: 01879474 | 01943113



FLOOR PLAN CREATED BY CUBICASA APP. MEASUREMENTS DEEMED HIGHLY RELIABLE BUT NOT GUARANTEED.

Scan for Details



KALEO
REAL ESTATE COMPANY