

OFFICE SPACE FOR LEASE



8 NORWICH STREET

WORCESTER, MA 01608



BRIAN JOHNSON

johnson@kelleher-sadowsky.com

O: 508.635.6783

C: 774.272.1112

JAY UMPHREY

jayumphrey@kelleher-sadowsky.com

O: 508.333.7520

C: 508.333.7520

EXECUTIVE SUMMARY



OFFERING SUMMARY

Property Type: Office

Building Size: ±7,488 SF

Available SF: Total: ±4,850 SF
Suite 1: ±1,100 SF
Suite 2: ±3,750 SF

Zoning: BG-6

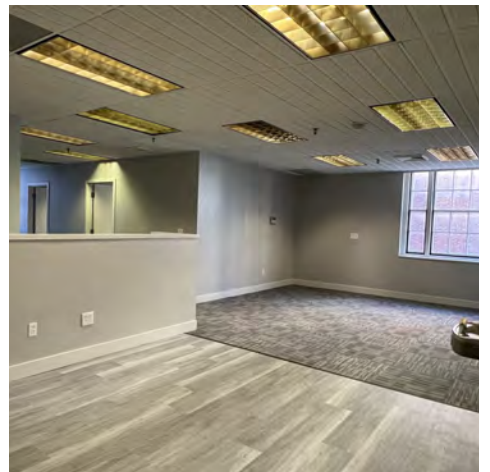
Lease Rate: \$22.50 SF/yr (MG)

PROPERTY OVERVIEW

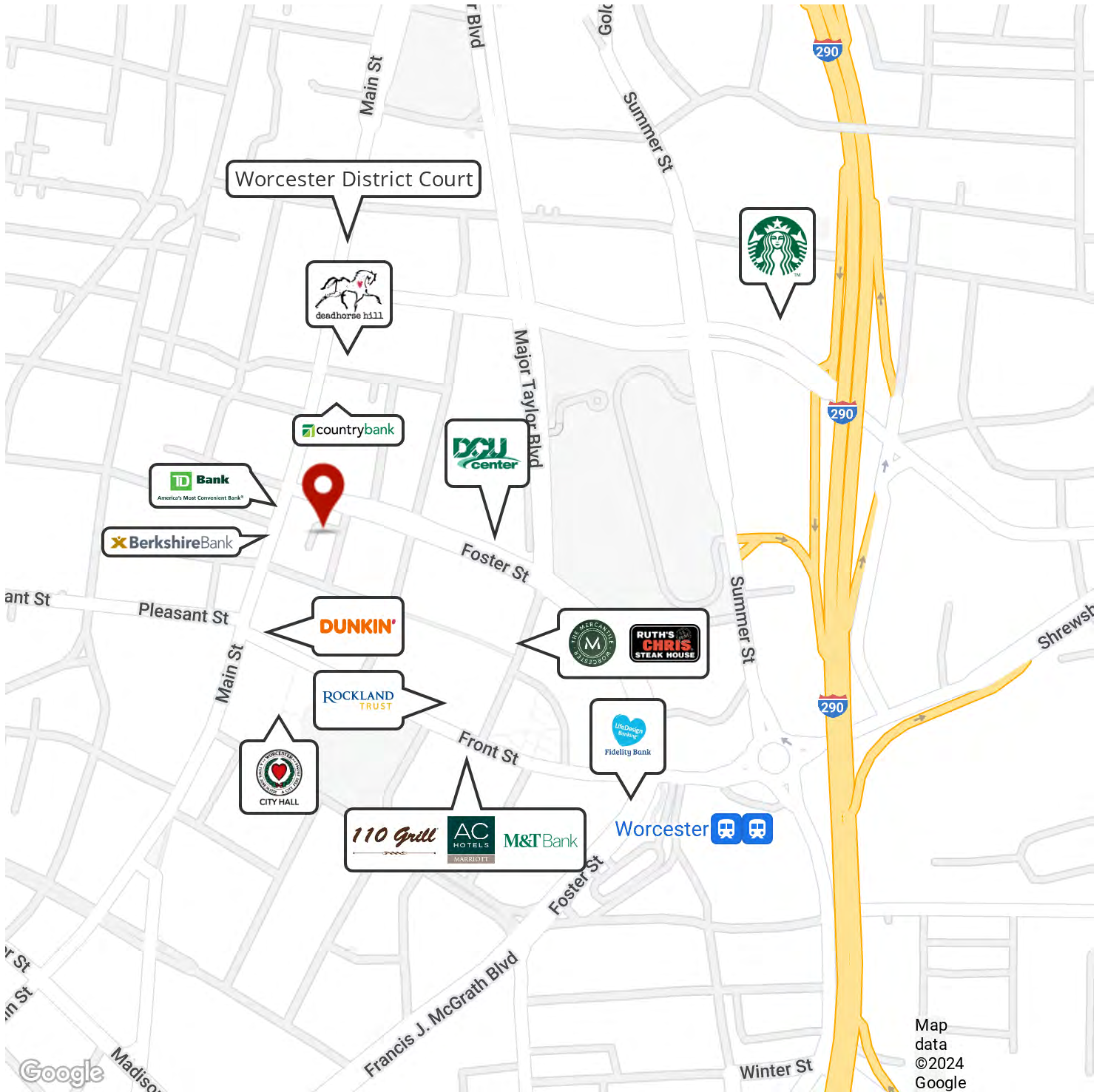
Jay Umphrey & Brian Johnson of Kelleher & Sadowsky Associates, Inc. are pleased to present two professional office suites as available for lease in downtown Worcester at 8 Norwich Street. The first floor suite, is comprised of ±1,100 SF with open space for cubicles, reception area, and a private office. On the second floor, there is ±3,750 SF of space with new paint & carpet throughout. The second floor suite has 12 private offices, a conference room, and open floor space. Both suites have high ceilings with great natural light throughout as well as access to a common kitchenette in the building's lower level. Both suites can be leased together for a total of ±4,850 SF. The property is located in the heart of downtown Worcester and is within walking distance to City Hall, DCU Center, both federal & district courthouses, and area amenities that include various banks, hotels and restaurants. In addition, the building is minutes from I-290 providing easy access to I-90, Route 9 and Route 20. Please give us a call today to schedule a tour.



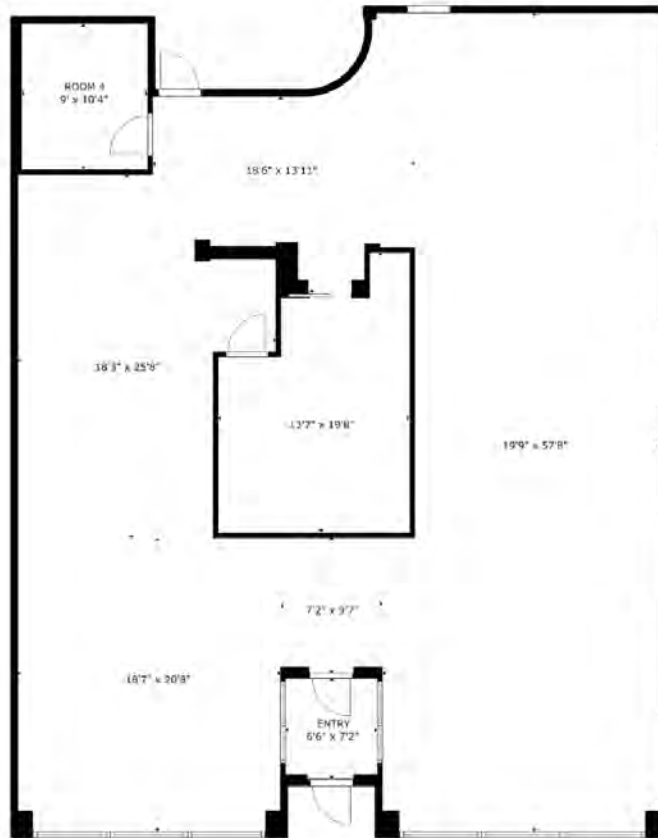
ADDITIONAL PHOTOS



LOCATION MAP



FLOOR PLAN - FIRST FLOOR



FLOOR PLAN - SECOND FLOOR

