

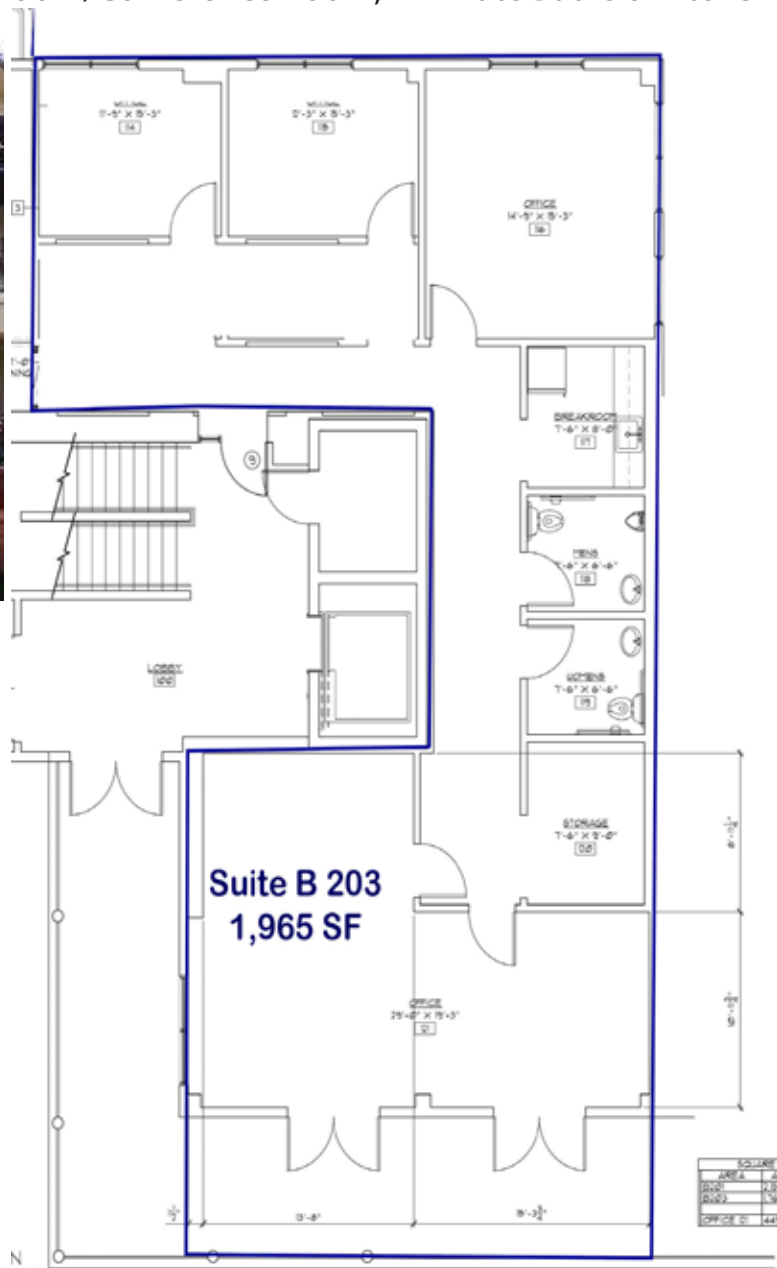
248 Addie Roy Rd., B 203- Condo

Office Condo For Lease - Westlake/Rob Roy

Total 1,965 SF - Stunning Views, Balcony, Large Jam Room/Conference Room, 2 Private Baths & Kitchen



Class A Office Condo for Lease in Westlake. Rob Roy Area. 1,965 SF available consisting of four executive offices and a large jam room or conference room area. Stunning views from of Hill Country and Lake Austin with balcony access. Ample storage area. Private men & women's ADA bathroom and kitchen. NNN approximately \$13.70 PSF and include water and electricity. 1,965 SF available now. Includes a reception area and storage area. Ample parking. Asking \$25 PSF + \$13.70 PSF NNN.



Contact Loren Kirkpatrick (512) 656-8521 or loren@trpaustin.com