



 4733

4733 Newcastle Road, Stockton, CA 95215 USA
Prologis Stockton 11



Prologis Stockton 11 - 186,944 SF

This state-of-the-art facility is strategically located in close proximity to BNSF and UPRR Intermodal terminals with direct access to Highway 99 and Interstate 5.

DEVELOPMENT HIGHLIGHTS

- ±5,100 SF office
- 30 dock high doors
- 29 pit levelers
- 2 grade level doors
- 32' clear height
- 50' x 52' column spacing
- 60' speed bay
- ESFR sprinklers
- 140 auto parking spaces
- 52 trailer parking positions
- 200' truck court
- 2,500 amps
- LED lighting
- Existing solar system
- Secured truck court



SIZE



DOCK DOORS



GRADE DOORS



TRUCK COURT



BUILDING DEPTH

Stockton 11

186,944 SF

30

2

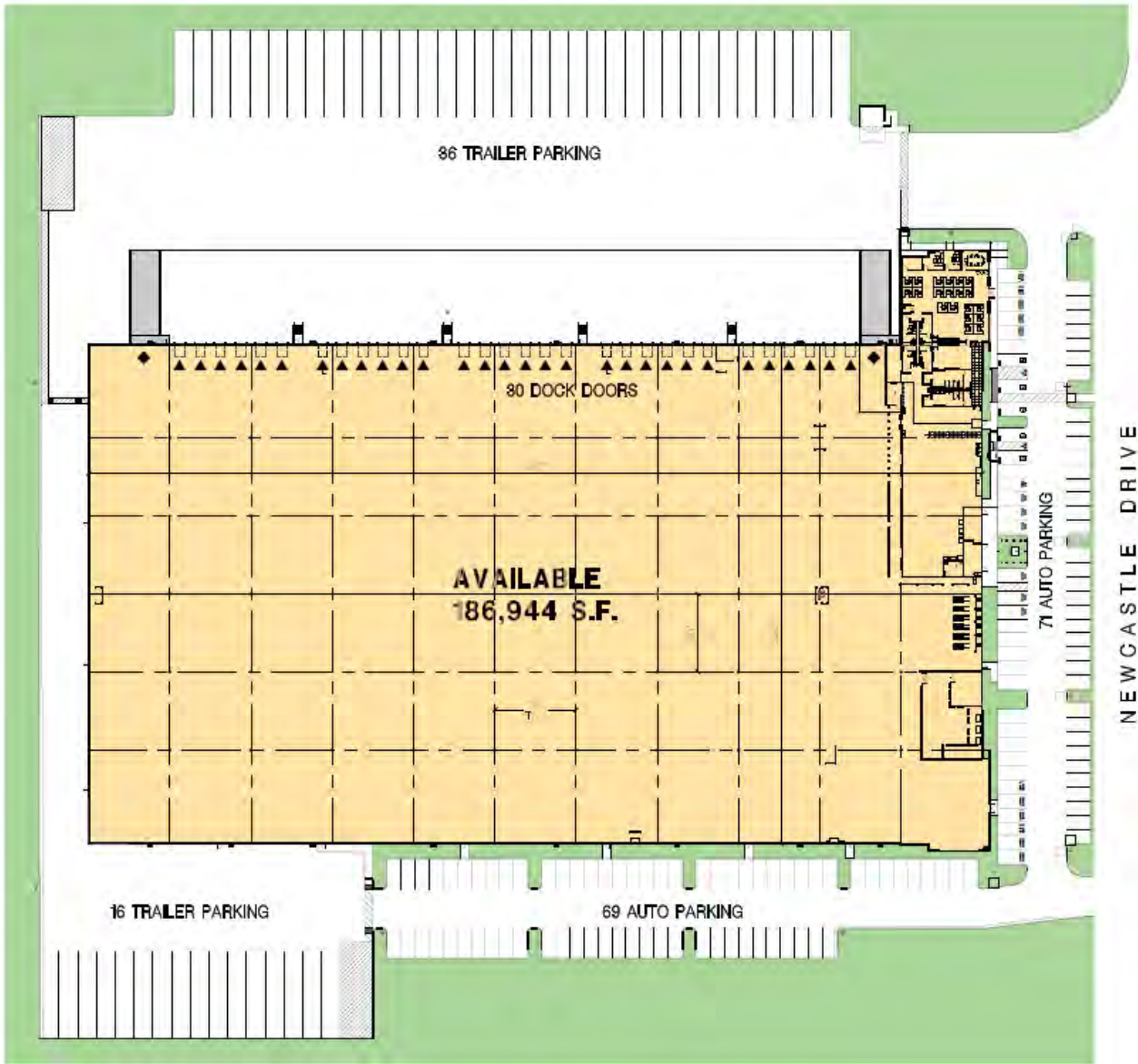
200'

320'

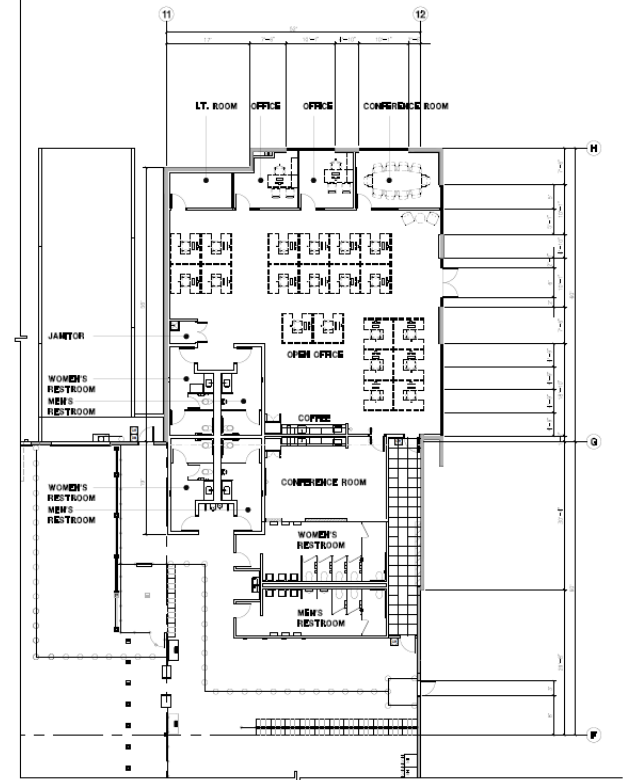
Your single-source service for efficient move-in and operations: prologisessentials.com



AVAILABLE OCTOBER 2024
Existing – 186,944 SF



Office: 5,100 SF



Existing Footprint

- ▼ Dock Door
- ◆ Drive-in Door
- Total footprint: 186,944 SF
- Warehouse: 182,960 SF
- Office: 5,100 SF



Tyson Vallenari, SIOR
 CalDRE Lic. #01480887
 +1 510 919 2328
 tyson.vallenari@cushwake.com

Kevin Dal Porto
 CalDRE Lic. #0212936
 +1 209 601 2476
 kevin.dalporto@cushwake.com

Blake Rasmussen
 CalDRE Lic. #01010250
 +1 209 481 7044
 blake.rasmussen@cushwake.com

Cushman & Wakefield
 3255 W March Lane, Ste. 230
 Stockton, CA 95219



Matt Drury
 CalDRE Lic. #01901364
 +1 209 833 5389 office
 mdrury@prologis.com

Bobby Gray
 CalDRE Lic. #02110961
 +1 415 733 9445 office
 rgray@prologis.com

Claire Wilson
 CalDRE Lic. #01982067
 +1 209 833 5395 office
 cwilson2@prologis.com

Prologis - Tracy
 615 International Parkway
 Tracy, CA 95377
 Main: +1 209 839 0209

Prologis is the world's largest owner, operator, and developer of logistics real estate with approximately 1.0 billion square feet owned and under management in 19 countries on four continents. We lease modern logistics facilities to a diverse base of approximately 5,800 customers principally across two major categories: business-to-business and retail/online fulfillment.

Data as of June 10, 2024 for assets the company owned or had investments in, on a wholly owned basis or through co-investment ventures, properties and development projects.
 PLD_PIPC6B_011023