

AVAILABLE FOR LEASE

900-926 WESTWOOD AVE, ADDISON, IL 60101



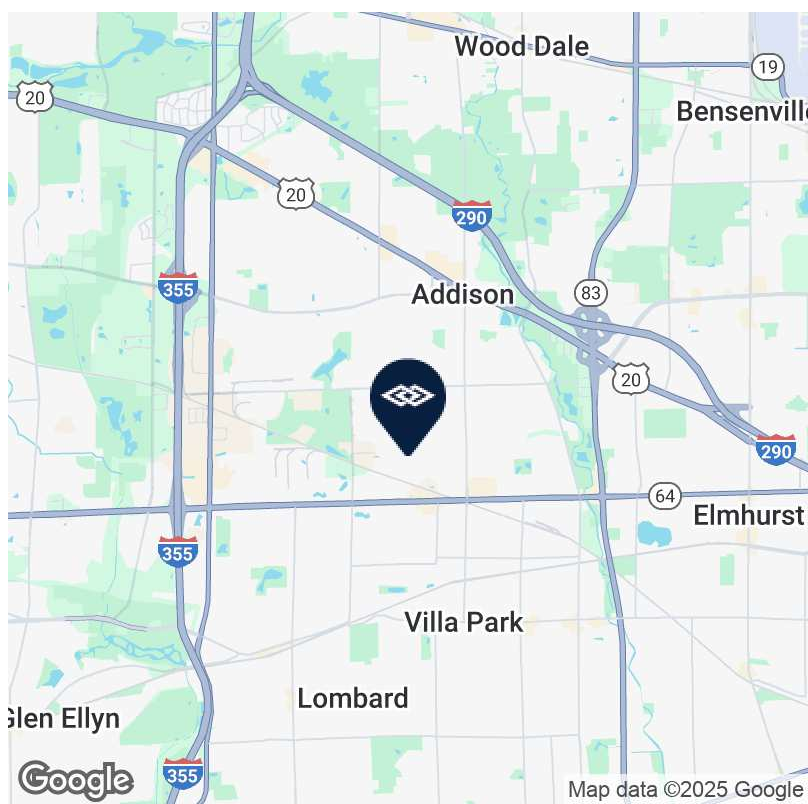
PROPERTY DESCRIPTION

Close to full interchange at I-355 and North Avenue; Great smaller unit with its own drive-in door

SPACES	LEASE RATE	SPACE SIZE
902 Westwood Ave	\$13.00 SF/yr	3,800 SF
912 Westwood Ave	\$13.00 SF/yr	3,800 SF
916 Westwood Ave	\$13.00 SF/yr	3,800 SF
922 Westwood Ave	\$13.00 SF/yr	3,800 SF
924 Westwood Ave	\$13.00 SF/yr	3,800 SF

OFFERING SUMMARY

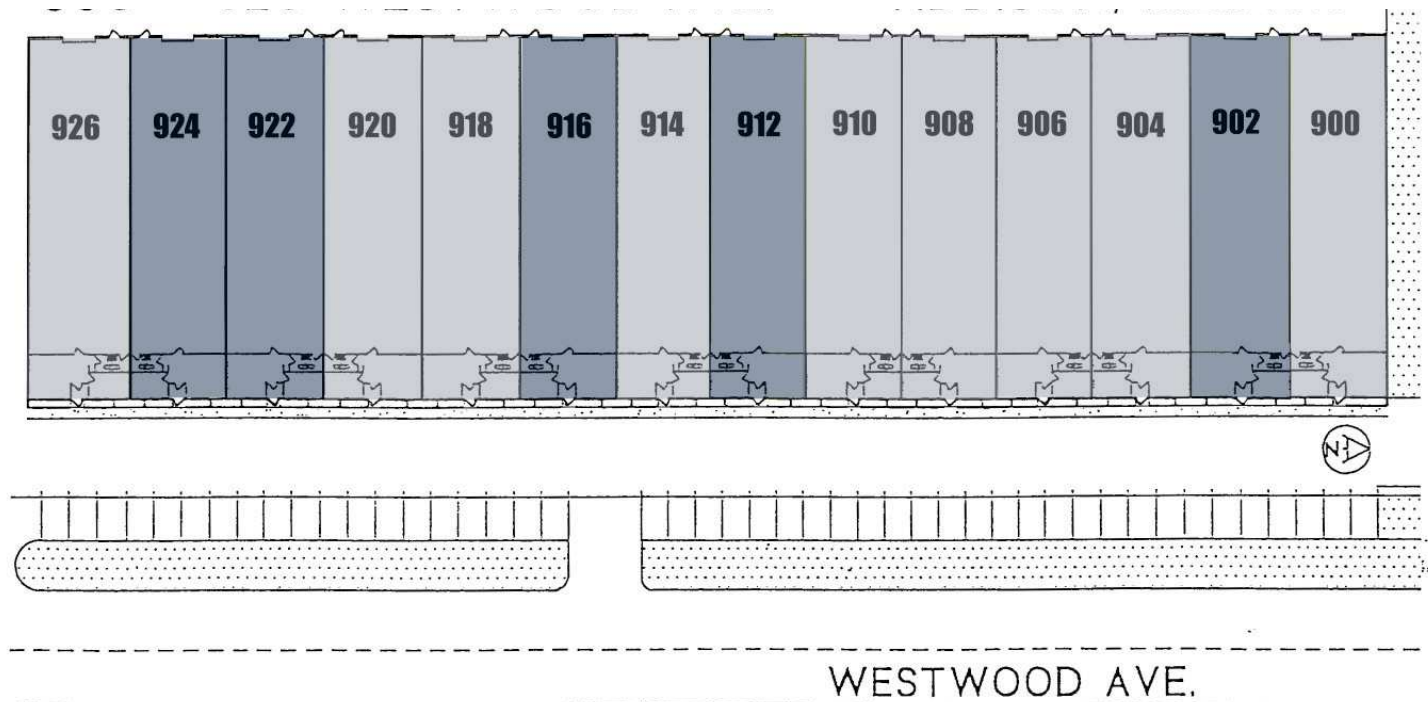
Office SF	10%
Ceiling Height	16' Clear
Loading	1 Drive-in door



MANDY LEWANDOWSKI | Vice President | 630.993.3851 | mandy@darwinpw.com

AVAILABLE FOR LEASE

900-926 WESTWOOD AVE, ADDISON, IL 60101



AVAILABLE SPACES

SUITE	SIZE	TYPE	RATE
902 Westwood Ave	3,800 SF	Modified Gross	\$13.00 SF/yr
912 Westwood Ave	3,800 SF	Modified Gross	\$13.00 SF/yr
916 Westwood Ave	3,800 SF	Modified Gross	\$13.00 SF/yr
922 Westwood Ave	3,800 SF	Modified Gross	\$13.00 SF/yr
924 Westwood Ave	3,800 SF	Modified Gross	\$13.00 SF/yr

MANDY LEWANDOWSKI | Vice President | 630.993.3851 | mandy@darwinpw.com



970 N Oaklawn, Suite 100 | Elmhurst, IL 60126 | Tel: 630.782.9520 | darwinpw.com

Submitted subject to error, change in status, or withdrawal without notice. Officers of this firm have an ownership interest in this property.