

 Transwestern

FF30

FAIRFAX BOULEVARD, FAIRFAX VA



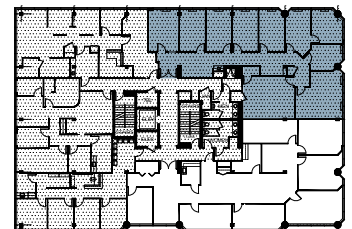
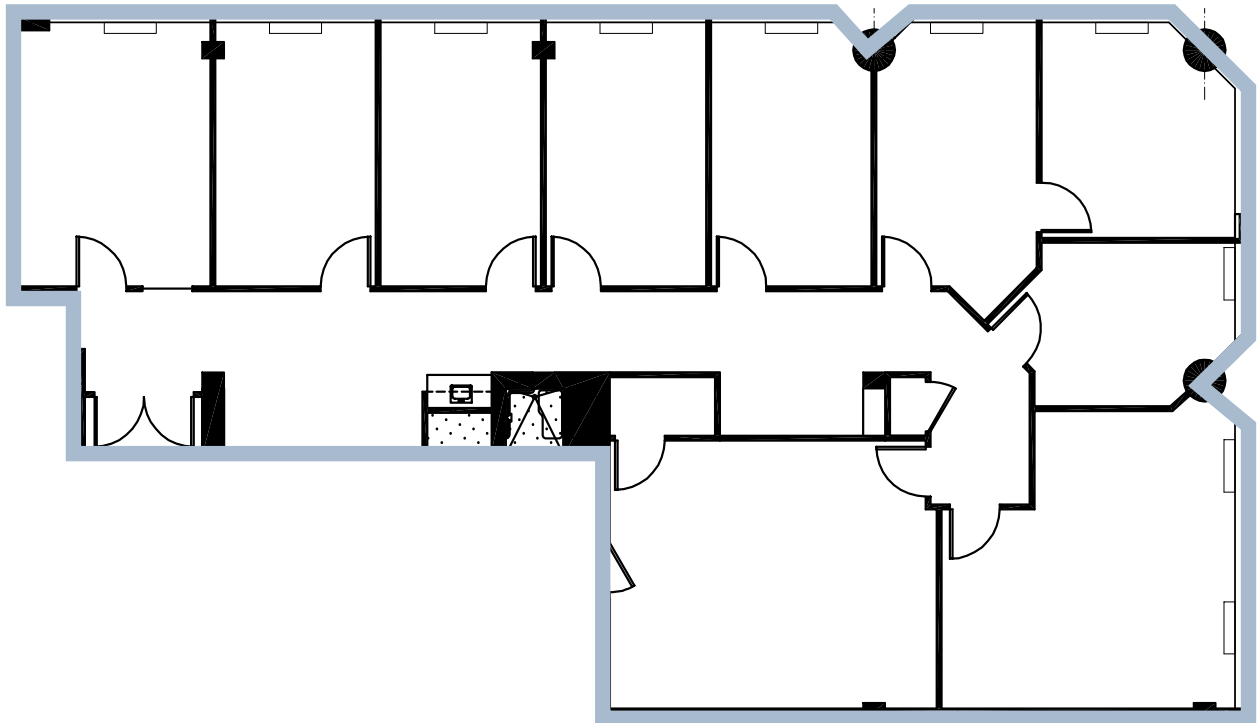
**ONLY
ONE SUITE
LEFT!**

- Highly visible from Route 50
- Immediate access to I-66 and Route 50
- Free surface and covered parking 3.2/1,000 SF
- Bank, Deli, and Management on-site
- Direct access to the 1C & 2B Metro Bus routes
- Strong ownership and property management

SECOND FLOOR

Suite 200 | 2,865 SF

- Office intensive
- Elevator lobby exposure
- Great windowline



11130

FOR MORE INFORMATION,
PLEASE CONTACT:

Bernie McKeever, Jr.

703. 749. 9462

bernard.mckeever@transwestern.com

Megan Rearden

703. 299. 6363

megan.rearden@transwestern.com

 **Transwestern**

8444 Westpark Drive, Suite 850
McLean, VA 22102 | 703.821.0040
transwestern.com