



**FREEZER/COOLER  
WAREHOUSE SPACE**

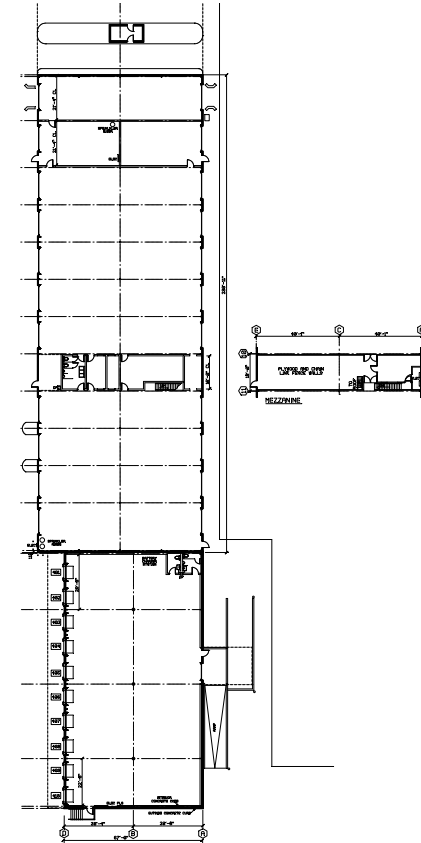
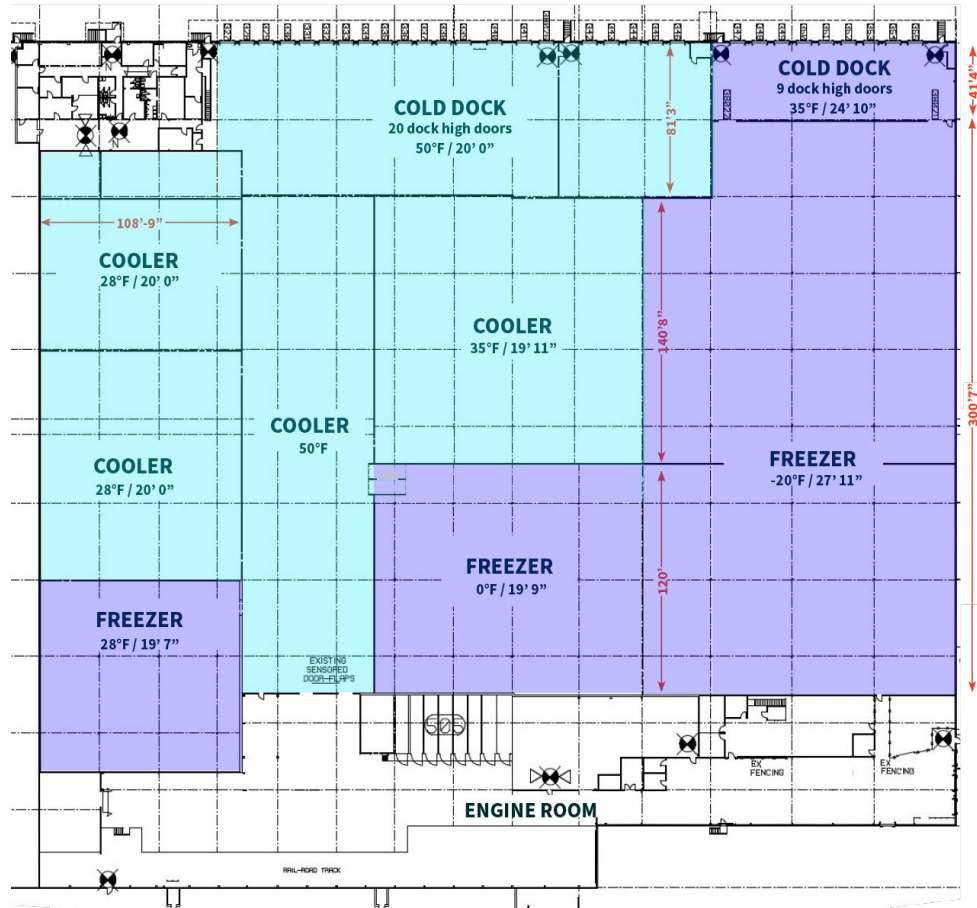
**5400 FULTON INDUSTRIAL BOULEVARD, ATLANTA, GA 30336**  
+/-243,263 SF Available

**CBRE**



# FREEZER/COOLER WAREHOUSE

# DRY WAREHOUSE



## COLD STORAGE WAREHOUSE

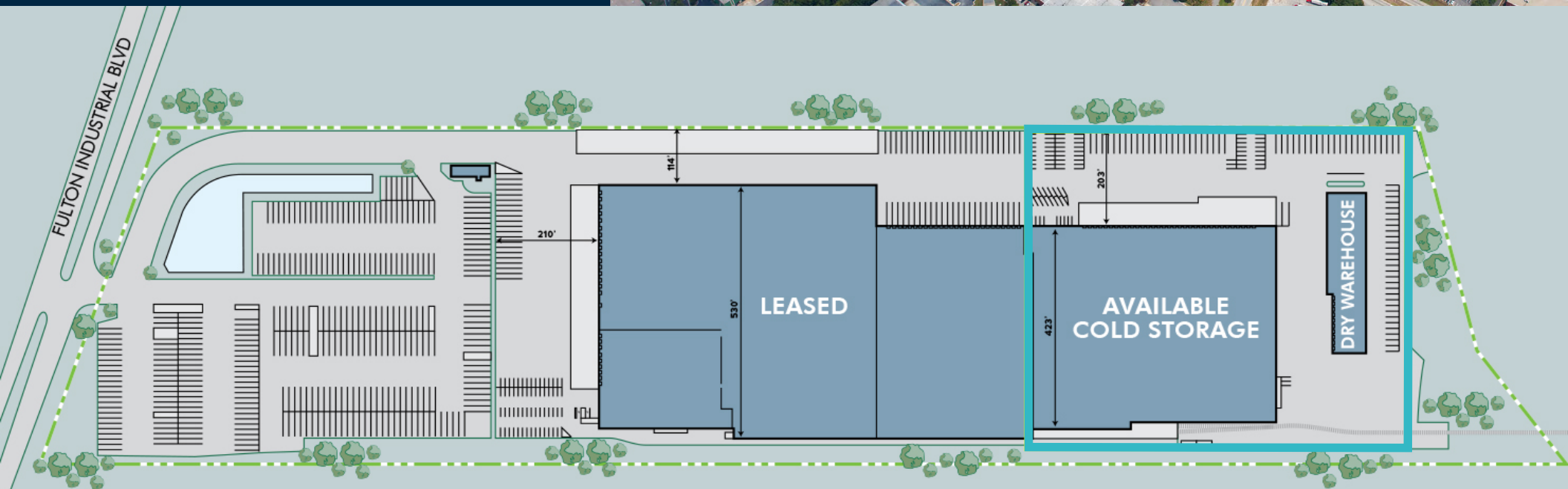
AVAILABLE	±215,880 SF
FREEZER	±72,795 SF (-20°F to 28°F)
COOLER	±96,770 SF (28°F to 50°F)
REFRIGERATION SYSTEM	Ammonia
OFFICE	±5,681 SF
DOCK DOORS	31

DRIVE IN DOORS	1
CLEAR HEIGHT	±20' - 28'
TRUCK COURT DEPT	±200'
TRAILER SPACES	25 (Expandable)
ELECTRICAL SERVICE	6,500 Amps, 277/480 Volts, 3-Phase, Four-Wire

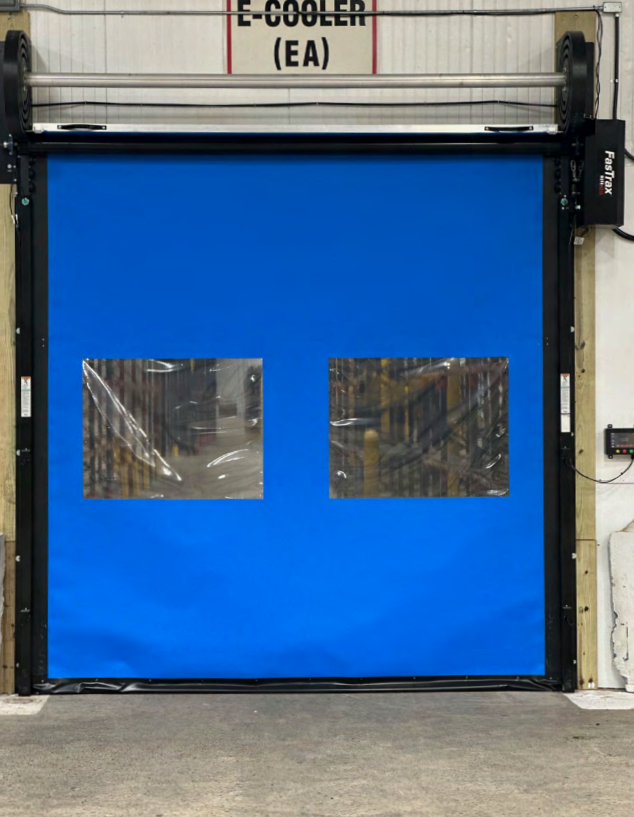
## ADJACENT DRY WAREHOUSE

AVAILABLE	±27,463 SF
DOCK HIGH WAREHOUSE	±8,961 SF
DOCK HIGH LOADING	10 Doors with Levelers
GRADE LEVEL WAREHOUSE	±17,220 SF
GRADE LEVEL LOADING	20 Grade Level Doors (10/Side)
OFFICE SF	±1,282 SF

COLD STORAGE/FOOD  
DISRIBUTION FACILITY  
ATLANTA, GA



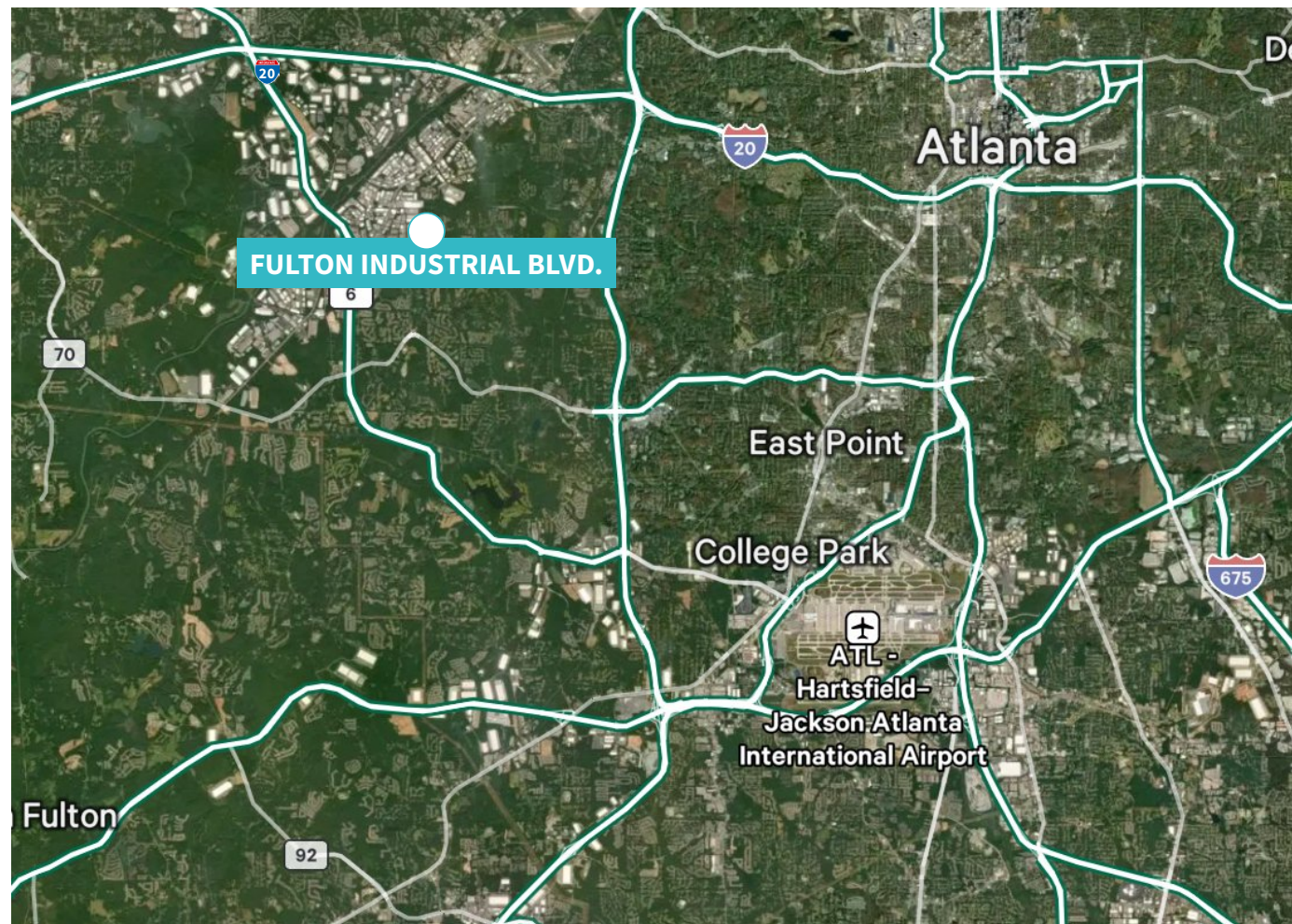






## DISTANCE TO

<b>I-20</b>	3.5 MILES
<b>I-285</b>	5.2 MILES
<b>Downtown Atlanta</b>	11.5 MILES
<b>Hartsfield Jackson International Airport (ATL)</b>	14.2 MILES
<b>Norfolk Southern Intermodal</b>	10.2 MILES
<b>CSX Intermodal</b>	17.2 MILES
<b>Savannah</b>	259 MILES



## FOR MORE INFORMATION, PLEASE CONTACT:

**DAVID SOURS, SIOR**  
Senior Vice President  
National Food Facilities Group  
+1 972 365 0980  
david.sours@cbre.com

**TODD BARTON, SIOR**  
Senior Vice President  
Advisory & Transaction Services  
+1 404 923 1435  
todd.barton@cbre.com

**CHRIS ECKLES**  
Senior Vice President  
Industrial Services Group  
+1 404 550 6334  
chris.eckles@cbre.com

**JOANNA BLAESING, SIOR**  
First Vice President  
Asset Services Group  
+1 404 812 5021  
joanna.blaesing@cbre.com