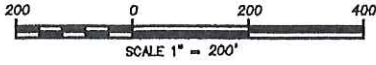
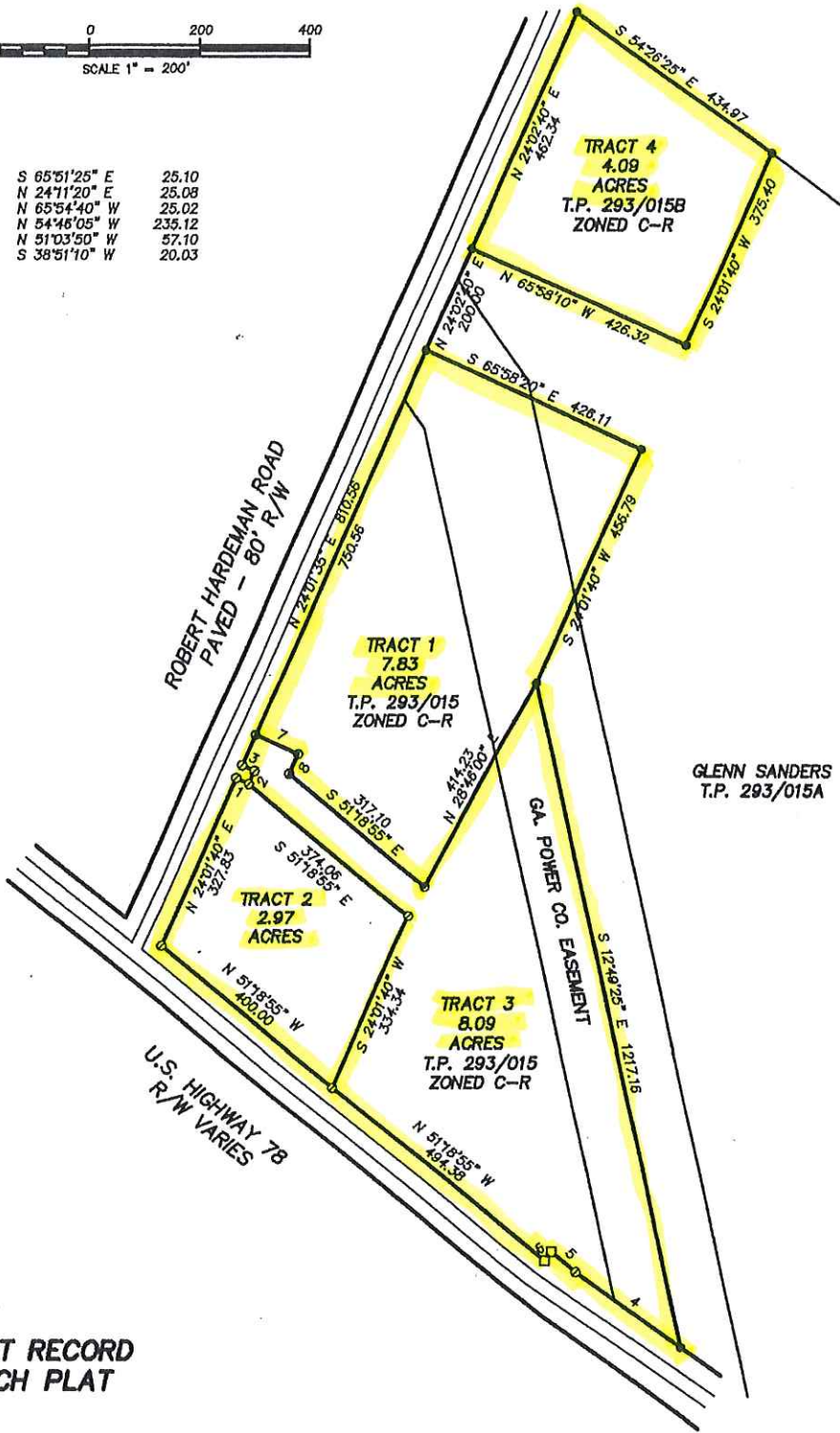


● IPF - IRON PIN FOUND
 ○ IPS - IRON PIN SET
 ⊕ - TRAVERSE POINT
 □ CM - CONCRETE MONUMENT



1	S 65°51'25" E	25.10
2	N 24°11'20" E	25.08
3	N 65°54'40" W	25.02
4	N 54°46'05" W	235.12
5	N 51°03'50" W	57.10
6	S 38°51'10" W	20.03



GLENN SANDERS
 T.P. 293/015A

**DO NOT RECORD
 SKETCH PLAT**

I HEREBY CERTIFY THAT THIS PLAT IS A TRUE AND CORRECT REPRESENTATION OF THE LAND PLATED AND WAS BEEN PREPARED IN CONFORMITY WITH THE MINIMUM STANDARDS AND REQUIREMENTS OF LAW.

	SURVEY FOR:			
	LEXINGTON ROAD DEV.			
	PLAN:	COUNTY: ATHENS - CLARKE	STATE: GEORGIA	DATE: 02-01-21
	PRODCOLG:	INST. EQUIP:	CLOSING:	ADJUSTMENT: NONE
SURVEYED BY:				
 THOMAS R. PAUL LAND SURVEYING P.O. BOX 185 LEXINGTON, GA. 30648 706-433-1037				
ADJ. CLOSING:		DRAWN BY:		
		T. PAUL		
		DRAWING TOOL:		
		KEN		
		FIELD BOOK:		