

For Lease

Medical Suites

CentraState Medical Center

901 West Main Street, Freehold, NJ



Bryn Cinque

Salesperson
Executive Managing Director
+1 973 299 3016
Bryn.Cinque@colliers.com

Doug Twyman, SIOR

Broker Salesperson
Senior Managing Director
+1 732 807 0338
Doug.Twyman@colliers.com

James Bailey

Salesperson
Managing Director
P: +1 973 299 3036
James.Bailey@colliers.com

Accelerating success.



Campus Features

- Part of CentraState Medical Center Campus
- Two, three-story buildings with spacious atrium lobby
- 24/7 security and secure physician parking area
- On-site amenities include:
 - Health and fitness center on-site
 - Café
- Available September 1, 2022

Availability

Timeshare and Direct space
Building A – Ambulatory
Campus, Suite 265
2,645 SF at \$26.00/SF

Timeshare suites
half or full day are
also available;
please call for
details

Bryn Cinque
Salesperson
Executive Managing Director
+1 973 299 3016
Bryn.Cinque@colliers.com

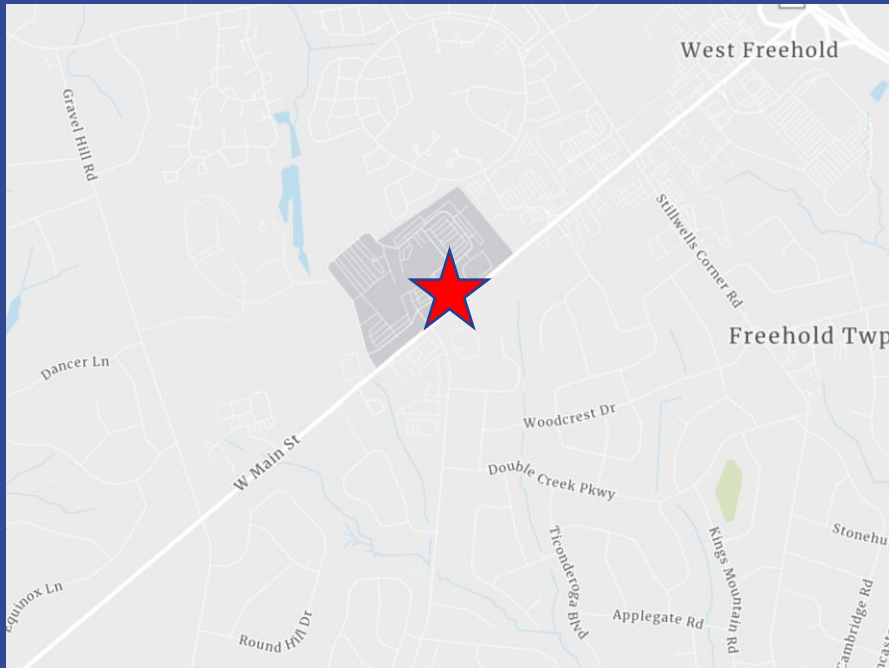
Doug Twyman, SIOR
Broker Salesperson
Senior Managing Director
+1 732 807 0338
Doug.Twyman@colliers.com

James Bailey
Salesperson
Managing Director
+1 973 299 3036
James.Bailey@colliers.com



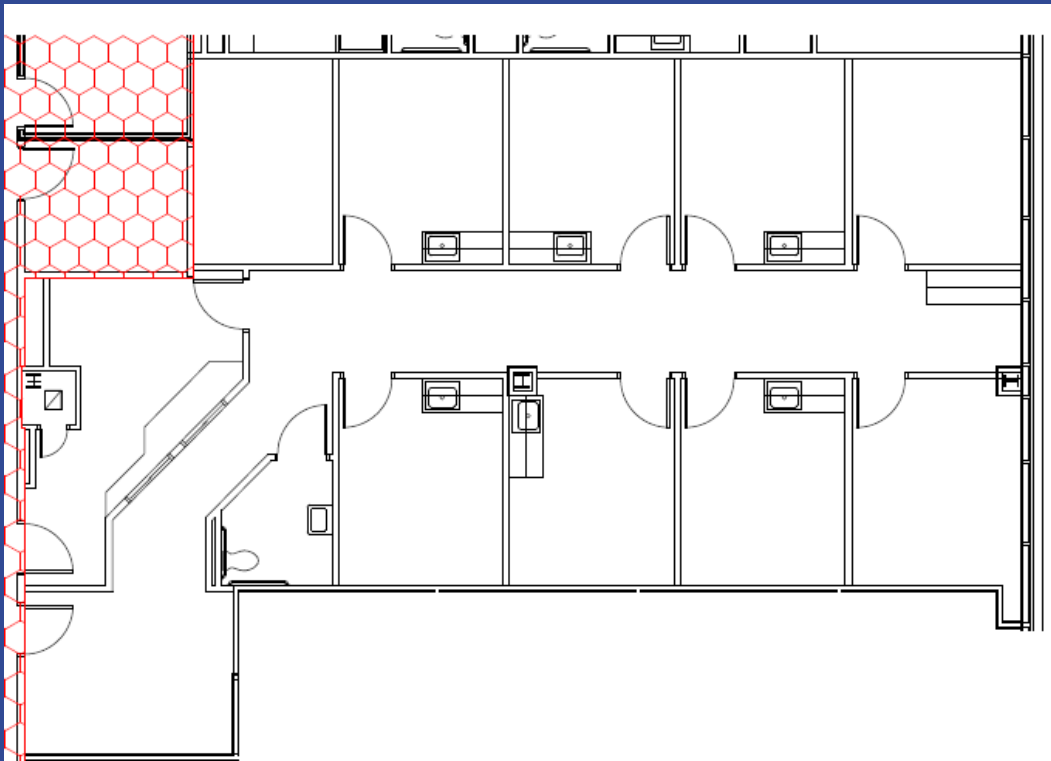
No representation is made as to the accuracy of the information furnished herein and same is submitted subject to errors, omissions, change of prices, rental, or other conditions, prior sale, lease, sublease, and/or withdrawal without notice. While every attempt is made to ensure accuracy, the floor plan(s) is for guidance only. The measurements, dimensions, specifications, and other data shown are approximate and may not be to scale. We assume no responsibility for the accuracy of the floor plan(s) or for any action taken in reliance thereon. The floor plan(s) do not create any representation, warranty or contract. All parties should consult a professional, such as an architect, to verify the information contained herein. The furnishing of this information shall not be deemed a hiring. A commission in accordance with our principal's schedule of rates and conditions will be paid to the procuring Broker who executes our or our principal's brokerage agreement, subject to a fully consummated transaction upon terms and conditions acceptable to our principal. Colliers International NJ, LLC

Aerial Maps, Location Highlights and Floor Plan



CentraState Medical Center Campus

- One mile to Route 33/Route 537 intersection
- Minutes to Routes 9 and 18
- Within walking distance to area amenities
- 11 miles to the Garden State Parkway
- 11 miles to Exit 8 - NJ Turnpike



Bryn Cinque
Salesperson
Executive Managing Director
+1 973 299 3016
Bryn.Cinque@colliers.com

Doug Twyman, SIOR
Broker Salesperson
Senior Managing Director
+1 732 807 0338
Doug.Twyman@colliers.com

James Bailey
Salesperson
Managing Director
+1 973 299 3036
James.Bailey@colliers.com

