

# SUGARMILL WOODS COMMERCIAL LAND

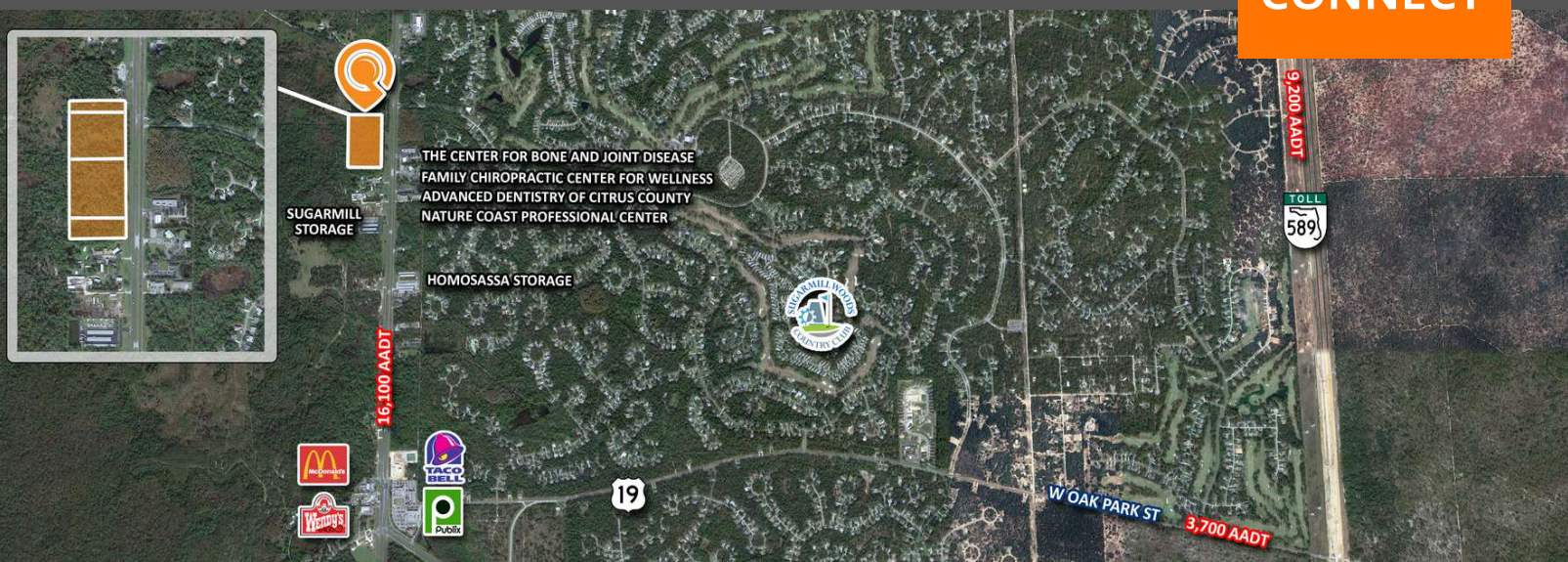
8320 S Suncoast Blvd | Homosassa, FL 34446

Expanding Citrus County Land For Sale



**LQ Commercial**  
REAL ESTATE SERVICES

**CONNECT**



**CALL FOR  
PRICE**



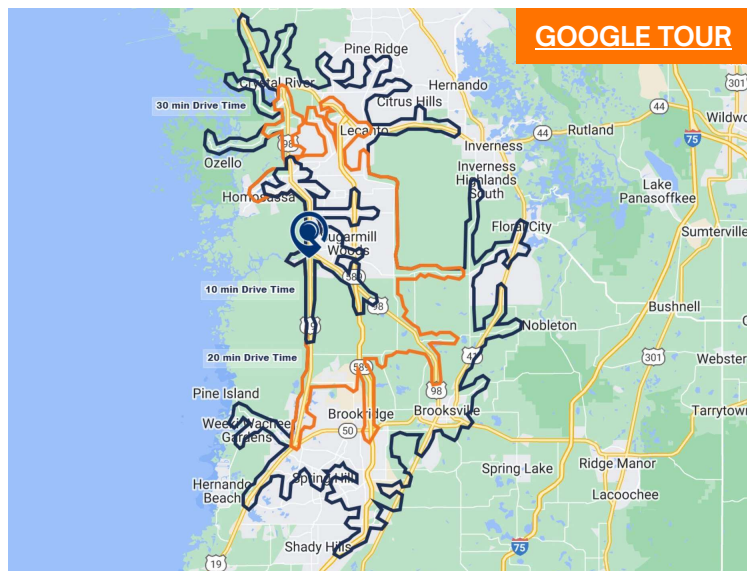
**19.83±  
ACRE**



**GNC  
ZONING**

- Large, commercially-zoned multi-use site for sale (19.83 AC).
- Between two major retail hubs: Publix and Walmart.
- Along US Hwy 19, a short drive to FL Toll 589.
- Cater to the "Sugarmill Woods Country Club" golf community (4,000 homes).
- Growing Citrus County area with above-average area incomes.

**GOOGLE TOUR**



[PROPERTIES.LQCRE.COM/RT-SUGARMILL](https://PROPERTIES.LQCRE.COM/RT-SUGARMILL)



**5-MILE POPULATION  
26,712**



**5-MILE INCOME  
\$77,933**



**5-MILE EMPLOYEES  
4,723**



5601 Mariner St #220  
Tampa, FL 33609  
**LQCRE.COM**

**Paul Rutledge**  
Senior Broker Associate  
D: 813.999.1942  
C: 941.228.2198  
**PRUTLEDGE@LQCRE.COM**

Information obtained from owner(s) or other sources deemed reliable. We have no reason to doubt its accuracy, but cannot guarantee it. All properties subject to change or withdrawal without notice.



# SUGARMILL WOODS COMMERCIAL LAND

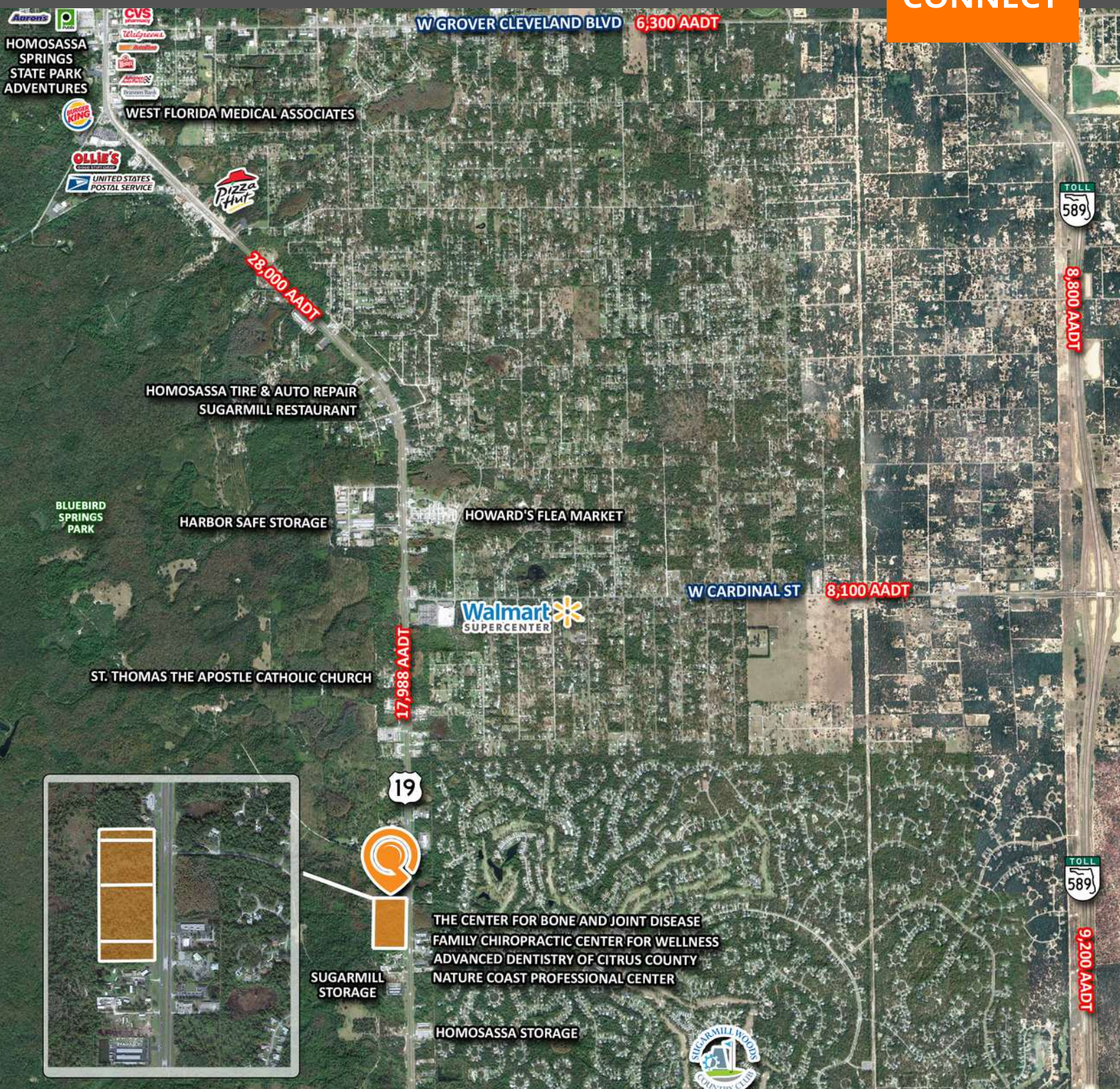
8320 S Suncoast Blvd | Homosassa, FL 34446

Expanding Citrus County Land For Sale



**LQ Commercial**  
REAL ESTATE SERVICES

**CONNECT**



**LQ Commercial**  
REAL ESTATE SERVICES

5601 Mariner St #220

Tampa, FL 33609

**LQCRE.COM**

**Paul Rutledge**

Senior Broker Associate

D: 813.999.1942

C: 941.228.2198

**PRUTLEDGE@LQCRE.COM**

Information obtained from owner(s) or other sources deemed reliable. We have no reason to doubt its accuracy, but cannot guarantee it. All properties subject to change or withdrawal without notice.