

Martin Downs Town Center

2870 SW Town Center Way, Palm City, Florida 34990

NAI Southcoast

Edward Jones
MAKING SENSE OF INVESTING

TRUIST 

DUNKIN'
DONUTS

Panera
BREAD

Quest
Diagnostics



Presented By

Stuart Duffin, P. A., SIOR, CCIM

Principal | Broker Associate
+1 772 579 0370
sduffin@naisouthcoast.com
www.naisouthcoast.com

JJ Sanguily

Sales Associate
+1 772 834 3519
jj@naisouthcoast.com
www.naisouthcoast.com

FOR LEASE:

\$28.00/SF NNN

Martin Downs Town Center

2870 SW Town Center Way, Palm City, Florida 34990

Property Features

- Upscale, Key West style retail center in the heart of Palm City
- Located at the busiest intersection of Martin Downs Blvd. & High Meadow Avenue
- 36,252 square foot retail center built in 2006
- Available space: 1,050 SF
- \$28.00 per square foot NNN
- \$12.44 per square foot CAM (Common Area Maintenance) expense
- Retail Center anchored by Publix and CVS Pharmacy
- Join Panera Bread, Edward Jones, Dunkin' Donuts, Truist and Quest Diagnostics

Property Overview

- The most prominent retail center in Palm City
- Centrally located with the high income gated communities of Palm City
- Great Tenant Mix in the center
- Historically there is very low turnover and vacancy in this center



Demographic Highlights

	Average Household Income	Median Age
1 Mile	\$95,869	59.5
3 Miles	\$123,120	55.7
5 Miles	\$109,829	51.1

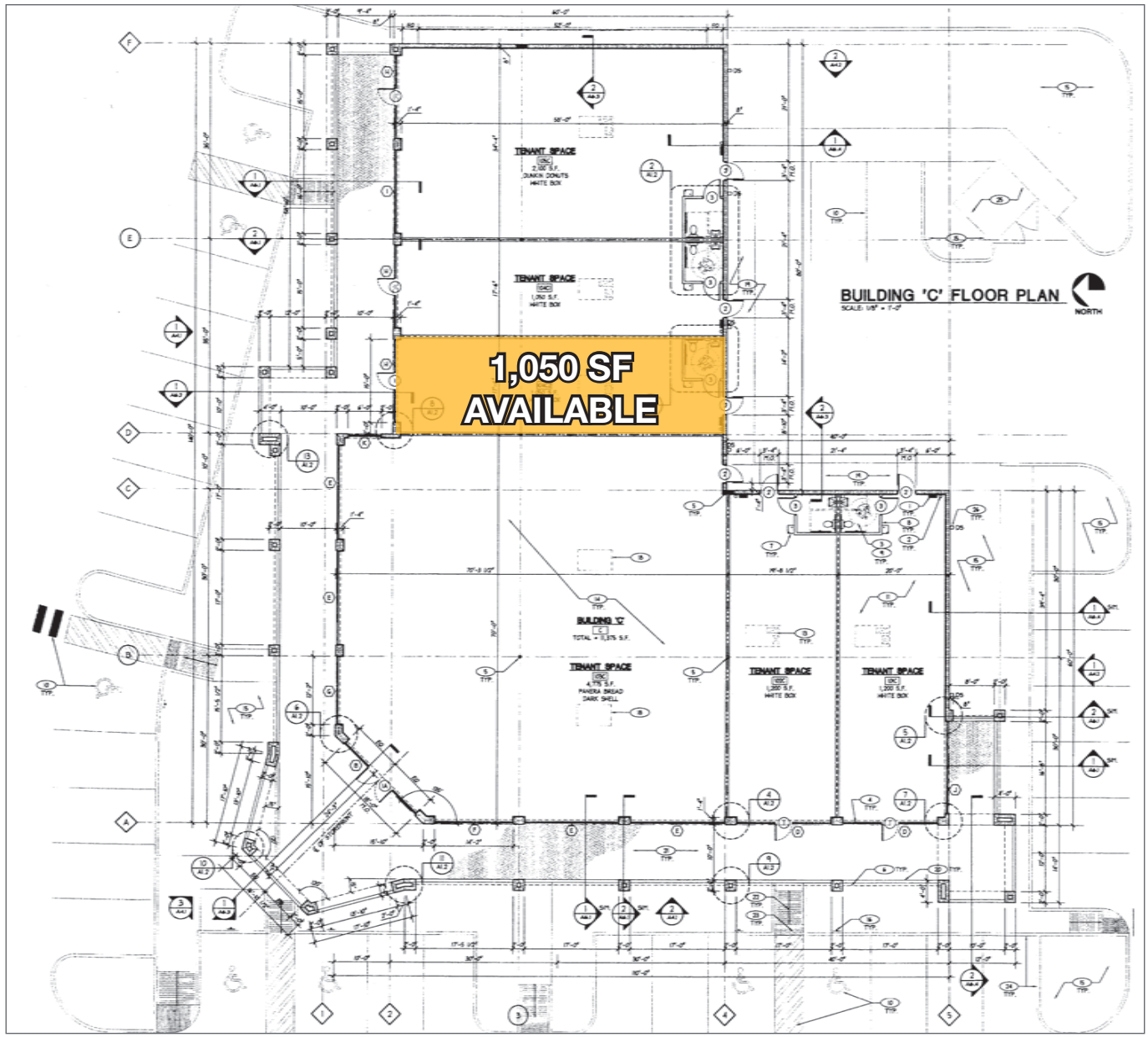
Martin Downs Town Center

2870 SW Town Center Way, Palm City, Florida 34990

Available Space



1,050 SF AVAILABLE



Martin Downs Town Center

2870 SW Town Center Way, Palm City, Florida 34990

Site Plan



Martin Downs Town Center

2870 SW Town Center Way, Palm City, Florida 34990

Aerial

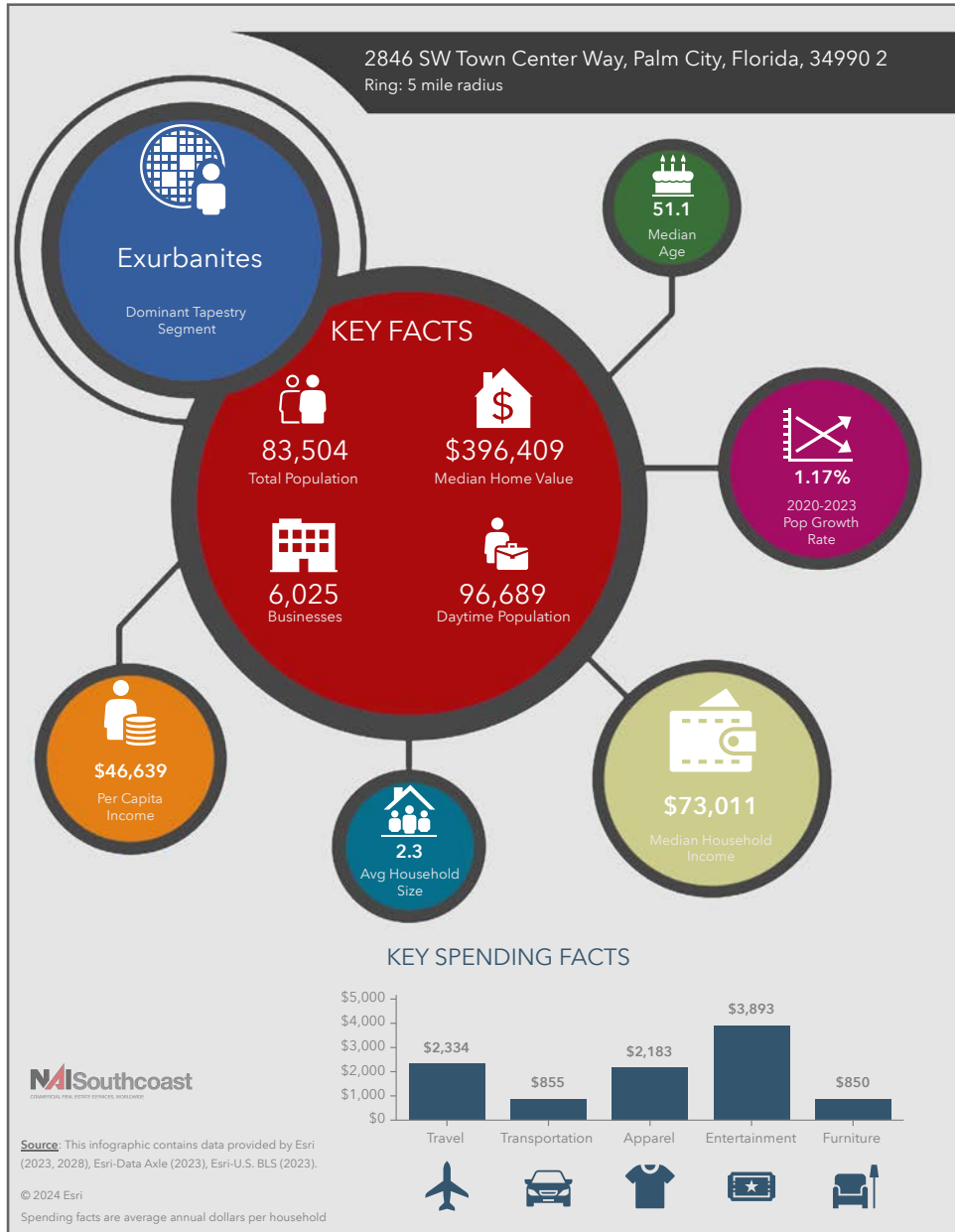


Martin Downs Town Center

2870 SW Town Center Way, Palm City, Florida 34990

Property Images





Population

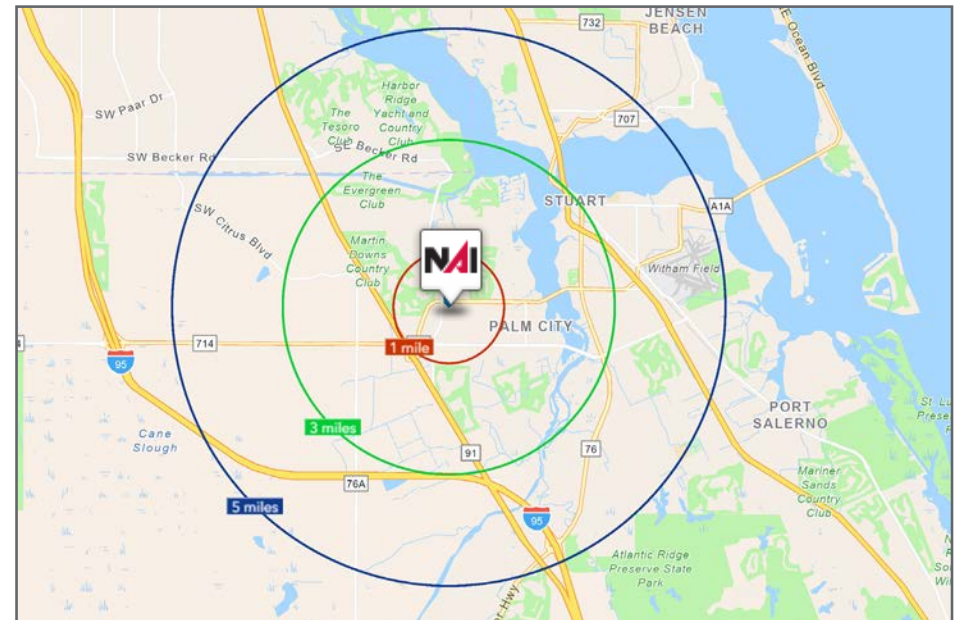
- 1 Mile: 7,995
- 3 Mile: 34,408
- 5 Mile: 83,504

Average Household Income

- 1 Mile: \$95,869
- 3 Mile: \$123,120
- 5 Mile: \$109,829

Median Age

- 1 Mile: 59.5
- 3 Mile: 55.7
- 5 Mile: 51.1



City Overview

Palm City, Florida



Palm City, situated in Martin County, Florida, is a captivating blend of natural beauty and suburban charm. Nestled along the St. Lucie River, this scenic town offers a tranquil escape from the bustling cities nearby. Renowned for its lush landscapes, Palm City showcases an array of palm trees and well-manicured greenery, painting a picturesque backdrop against the Florida sky.

The community prides itself on a family-friendly atmosphere, with top-rated schools, safe neighborhoods, and a strong sense of camaraderie. Residents enjoy a range of recreational opportunities, including boating, fishing, and golfing, thanks to the area's proximity to water bodies and golf courses. The historic downtown area exudes a quaint ambiance, hosting local boutiques, eateries, and cultural events that reflect the town's unique character.

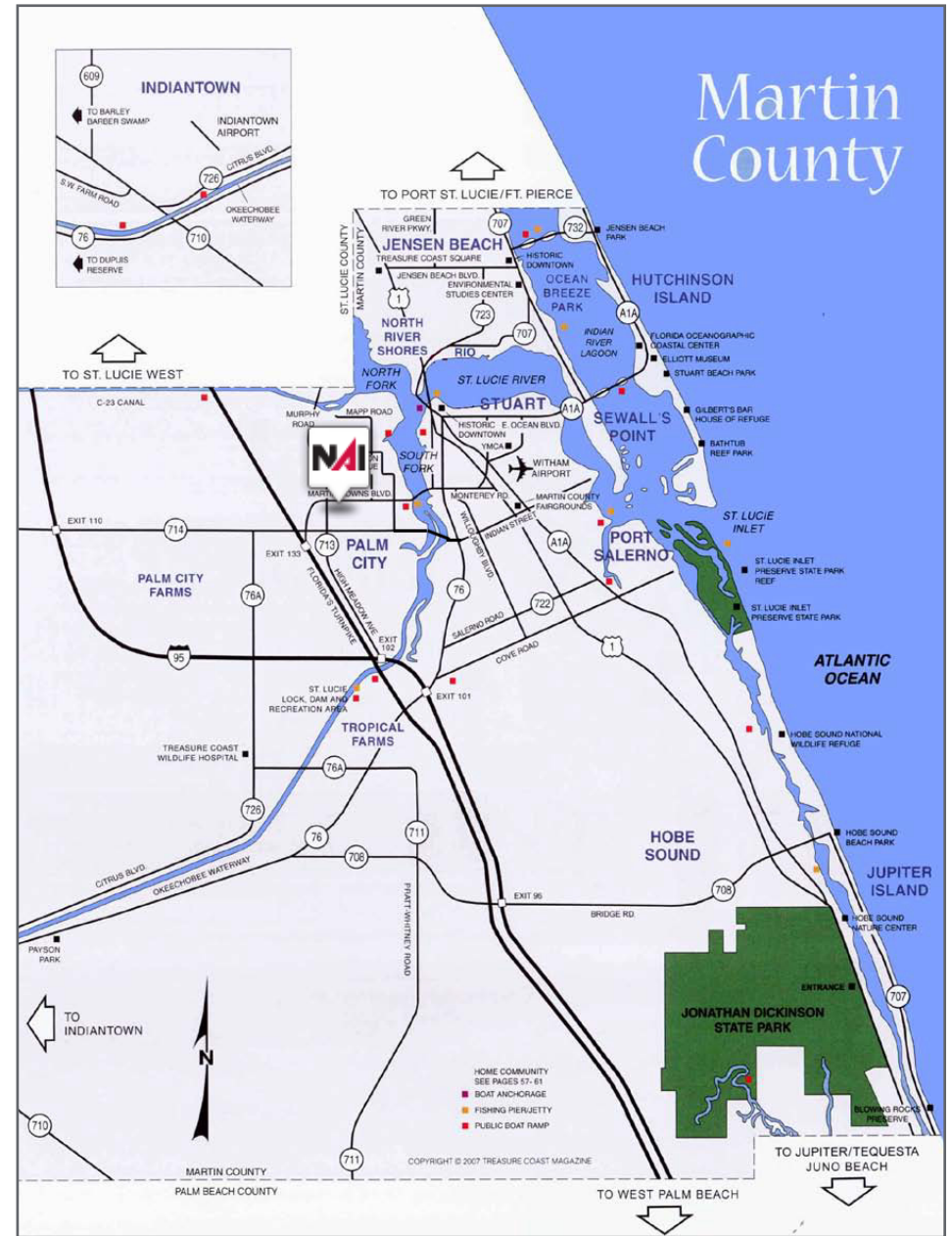
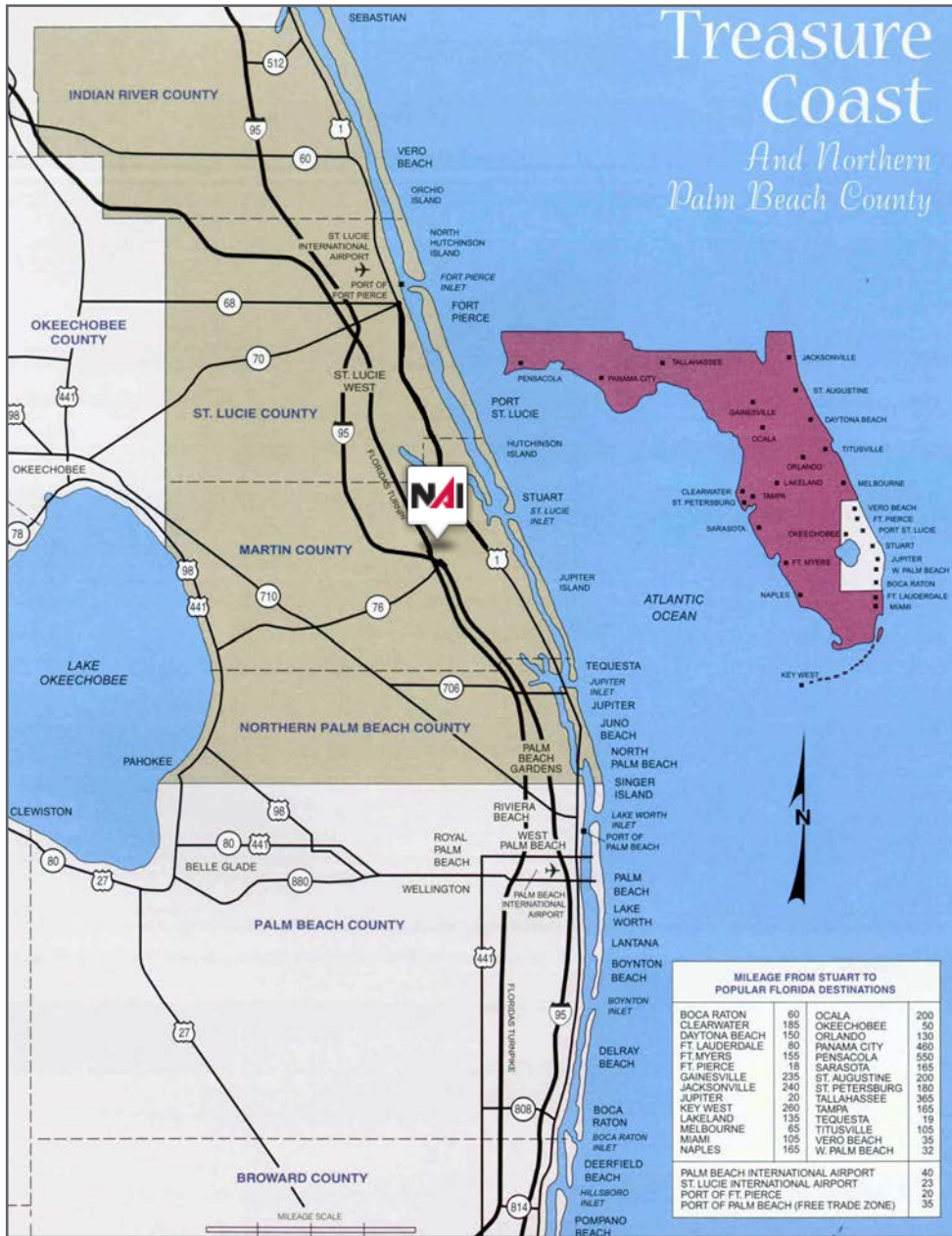
Palm City's location offers easy access to both the Atlantic Coast and the Gulf of Mexico, making it a haven for water enthusiasts and nature lovers. The warm climate ensures year-round outdoor enjoyment, while the town's commitment to preserving its natural surroundings contributes to a sustainable and eco-friendly lifestyle.

Palm City, Florida, is more than just a location; it's a lifestyle embraced by those who value a balance between nature's splendor and modern comforts. Whether you seek serene landscapes, engaging community activities, or a peaceful haven to call home, Palm City invites you to experience its one-of-a-kind charm.

Martin Downs Town Center

2846 SW Town Center Way, Palm City, Florida 34990

Area Maps



County Overview

Martin County, Florida

The cities that make up Martin County include Jensen Beach/Rio, Stuart/Sewall's Point, Hutchinson Island, Hobe Sound, Jupiter/ Tequesta, Palm City, Port Salerno and Indiantown. Martin County is a wonderful place to visit and live, with beaches, golf, fishing and boating. The County boasts arts, quaint downtowns with shops, gourmet dining, galleries, museums, historic places, festivals and more.

Martin County is for...

The golf enthusiast... Martin County is home to over 35 world-class golf courses all within a 15-mile radius. The sun worshiper... The County offers its visitors and residents alike some of the finest beaches on the east coast. The discriminating arts shopper... More than 20 galleries participate in a monthly First Thursday gallery night. Many of these galleries are in the historic downtowns of Stuart, Jensen Beach, Port Salerno and Hobe Sound. The music lover... The historic Lyric Theatre offers a wide-array of fist class talent nearly 300 days a year... This acoustically amazing theatre features concerts for all music lovers, from classical to rock and roll, and theatrical performances by local and national talent.

Mark your calendars for a plethora of events to look forward to in Martin County, Florida. The Stuart Air Show, Stuart Boat Show, ArtsFest, and the Martin County Fair are just some of the many events taking place throughout the year. The Treasure Coast Children's Museum, located at Indian Riverside Park, is a great place for kids and families, offering a water play area, fishing, and a riverfront view. Often, there are events in the park including concerts, orchid shows, and more. Indian Riverside Park also features the Maritime and Yachting Museum. Hutchinson Island is home to the Elliott Museum which celebrates the genius of innovation, creativity and the historical events of Martin County. Named after the prolific inventor Sterling Elliott, the museum hosts permanent exhibits showcasing Model A Trucks, early transportation, the history of Stuart and its surrounding regions, and baseball memorabilia. For the scientifically minded and curious kids, the Florida Oceanographic Coastal Center offers fun opportunities to learn about our local ecosystem.



Presented By



Stuart Duffin, P. A., SIOR, CCIM

Principal | Broker Associate
+1 772 579 0370
sduffin@naisouthcoast.com



JJ Sanguily

Sales Associate
+1 772 834 3519
jj@naisouthcoast.com

Martin Downs Town Center

2870 SW Town Center Way, Palm City, FL 34990



FOR LEASE:

\$28.00/SF NNN

NAI Southcoast

www.naisouthcoast.com

NO WARRANTY OR REPRESENTATION, EXPRESS OR IMPLIED, IS MADE AS TO THE ACCURACY OF THE INFORMATION CONTAINED HEREIN, AND THE SAME IS SUBMITTED SUBJECT TO ERRORS, OMISSIONS, CHANGE OF PRICE, RENTAL OR OTHER CONDITIONS, PRIOR SALE, LEASE OR FINANCING, OR WITHDRAWAL WITHOUT NOTICE, AND OF ANY SPECIAL LISTING CONDITIONS IMPOSED BY OUR PRINCIPALS NO WARRANTIES OR REPRESENTATIONS ARE MADE AS TO THE CONDITION OF THE PROPERTY OR ANY HAZARDS CONTAINED THEREIN ARE ANY TO BE IMPLIED.