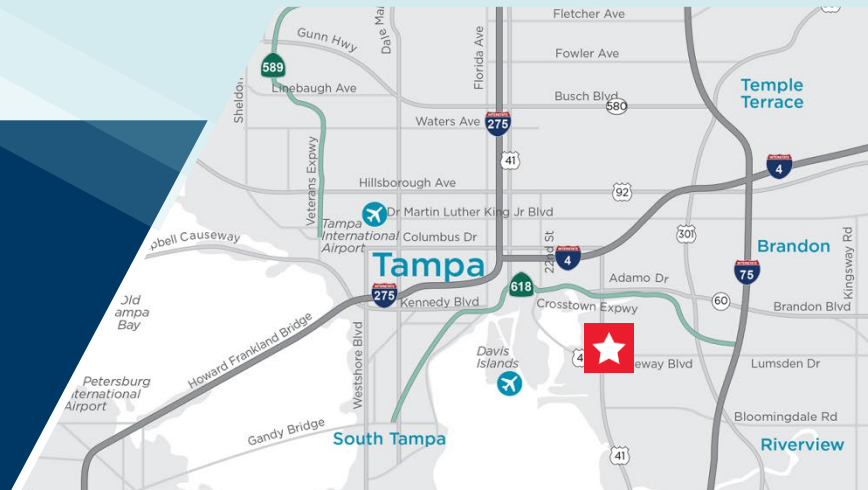


MERIDIAN EAST

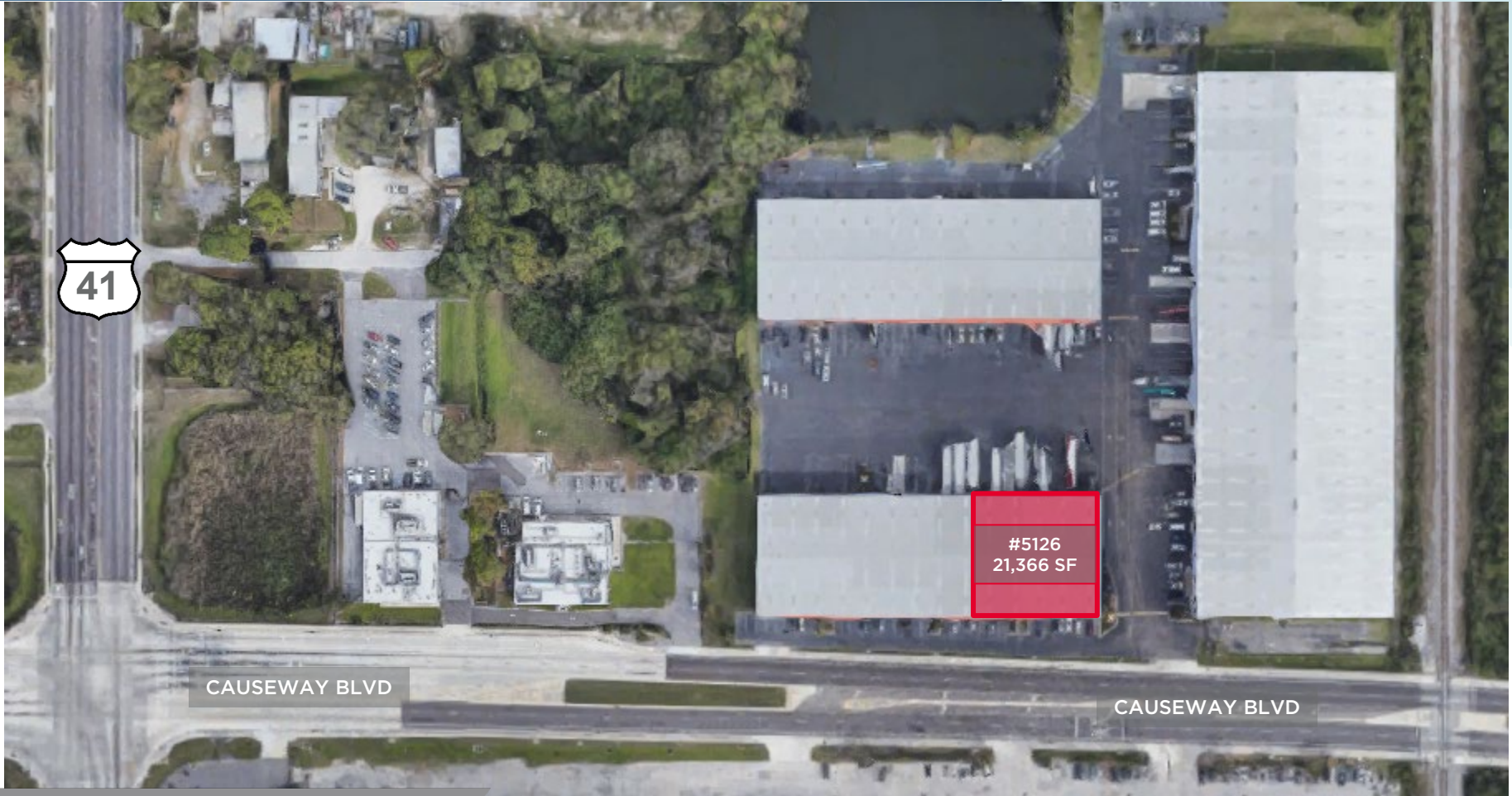
5126 Causeway Blvd
Tampa, FL 33619



21,366 SF Available

MERIDIAN EAST

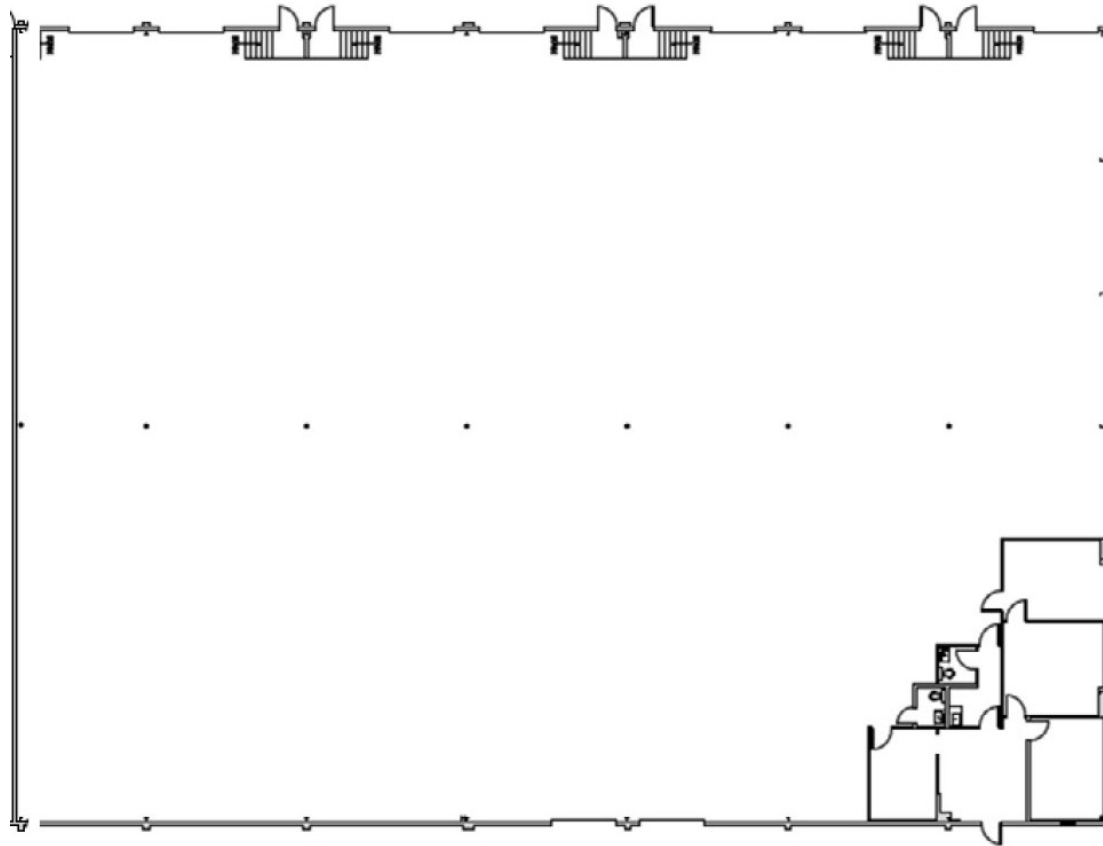
5126 Causeway Blvd
Tampa, FL 33619



PROPERTY HIGHLIGHTS

- 21,366 SF Available
- ± 1,203 SF Office
- Column Spacing: 23'x58'
- 7 Dock High Doors - Rear
- 2 Grade Level Doors - Front
- Available May 1, 2024
- 16'-20' Clear Height
- Concrete Block Construction
- Fully Sprinklered
- Easy Access to the Port, I-4, Lee Roy Selmon Expressway, US HWY 301, and I-75

5126 Vivian Place | 21,366 Total SF



21,366 Total SF
7 Dock High Doors - Rear
2 Grade Level Doors - Front
Available May 1, 2024

FOR ADDITIONAL INFORMATION, PLEASE CONTACT:

TREY CARSWELL, SIOR
Managing Director
+1 813 204 5314
trey.carswell@cushwake.com

LISA ROSS, SIOR
Managing Director
+1 813 424 3211
lisa.ross@cushwake.com

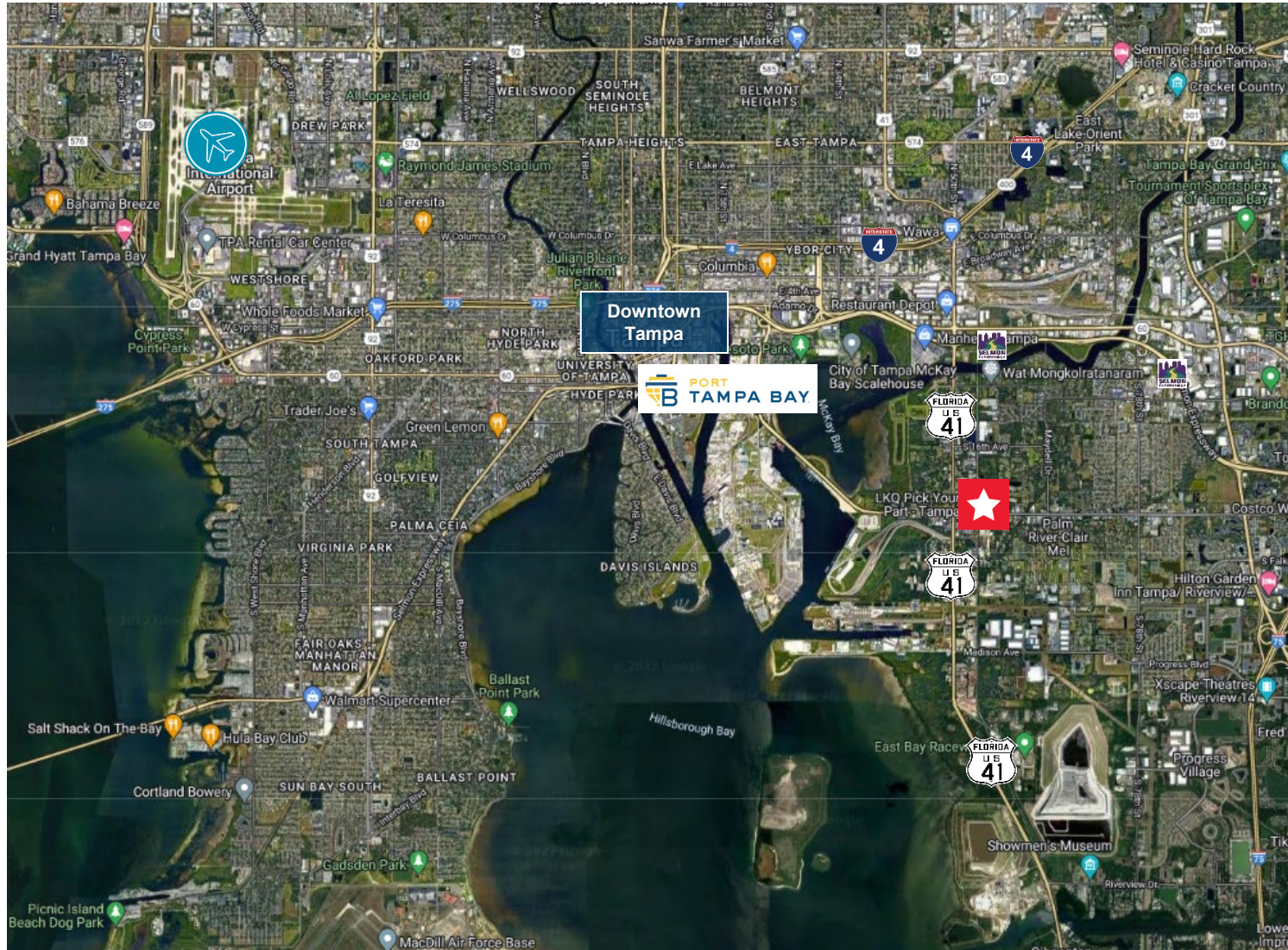
SAM KOROLOS
Senior Associate
+1 704 989 1327
sam.korolos@cushwake.com

OXFORD

CUSHMAN & WAKEFIELD

Meridian East

5126 Causeway Blvd



FOR ADDITIONAL INFORMATION, PLEASE CONTACT:

TREY CARSWELL, SIOR
Managing Director
+1 813 204 5314
treycarswell@cushwake.com

LISA ROSS, SIOR
Managing Director
+1 813 424 3211
lisa.ross@cushwake.com

SAM KOROLOS
Senior Associate
+1 704 989 1327
sam.korolos@cushwake.com

OXFORD

CUSHMAN & WAKEFIELD