

FOR LEASE



MELVIN MARK
EST. 1945

COLUMBIA SQUARE RETAIL

111 SW Columbia Street, Portland, Oregon 97201

*Retail and Restaurant Space Available
from 998 to 6,133 RSF*

NICOLE ONDER

503.546.4540

nonder@melvinmark.com

Licensed in OR & WA

MICHAEL ECKER

503.546.4586

mecker@melvinmark.com

Licensed in OR

Melvin Mark Brokerage Co.

111 Southwest Columbia

Portland, Oregon 97201

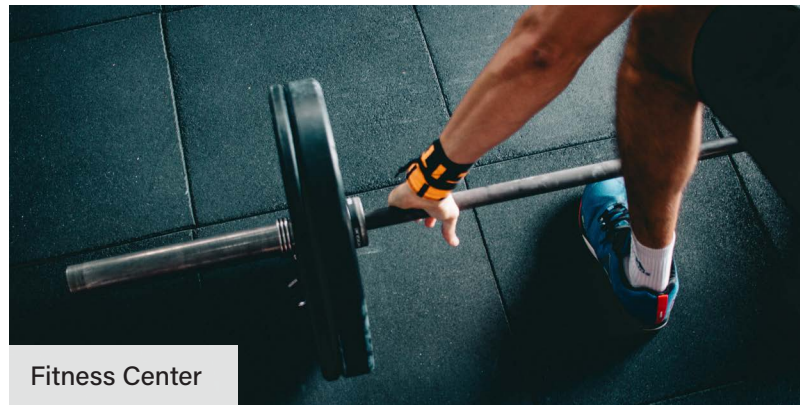
P: 503.223.9203 | melvinmark.com

COLUMBIA SQUARE FOR LEASE

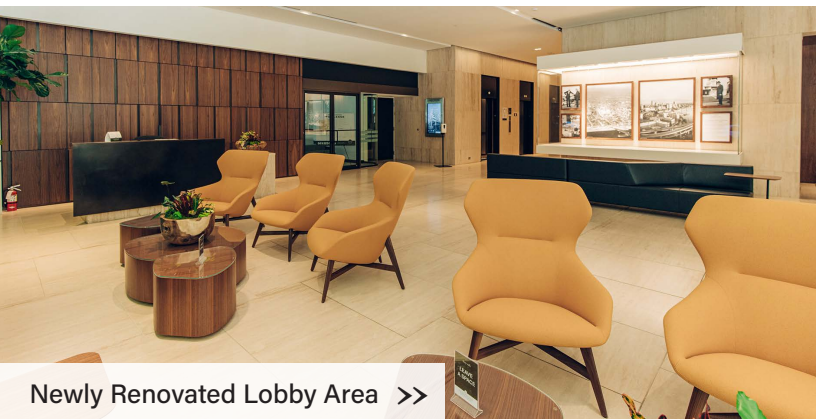


BUILDING HIGHLIGHTS

- Building lobby and common area renovations complete
- Fitness center, shower & locker rooms
- Secure bike storage
- Green Building Initiative awarded top rating: 4 Globes
- Local ownership and responsive property management



Fitness Center



Newly Renovated Lobby Area >>



Bike Storage



CREATIVE
WORK SPACE
AVAILABLE



CLASS
A SPACE
AVAILABLE



PROFESSIONAL
SERVICES



RETAIL SPACE
AVAILABLE



SUSTAINABLE
PRACTICES



BIKE
ACCESSIBILITY



COFFEE
SHOP(S)
NEARBY



DINING
NEARBY



MANAGED BY
MELVIN MARK

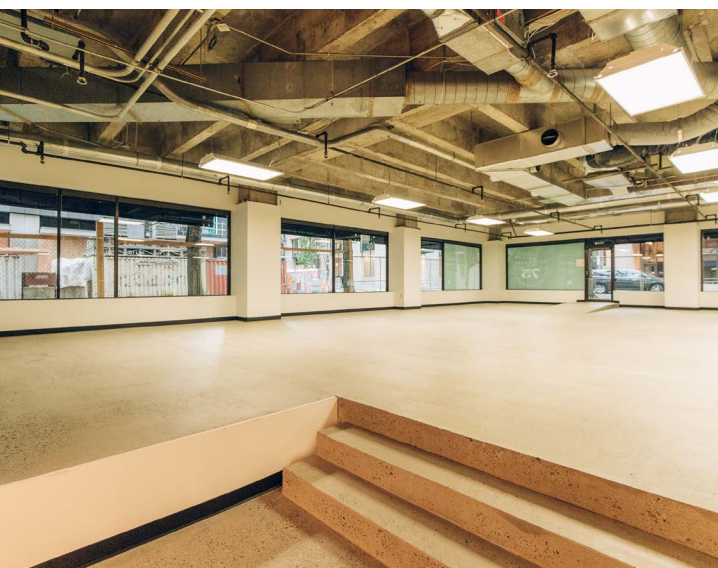


CENTRAL
LOCATION

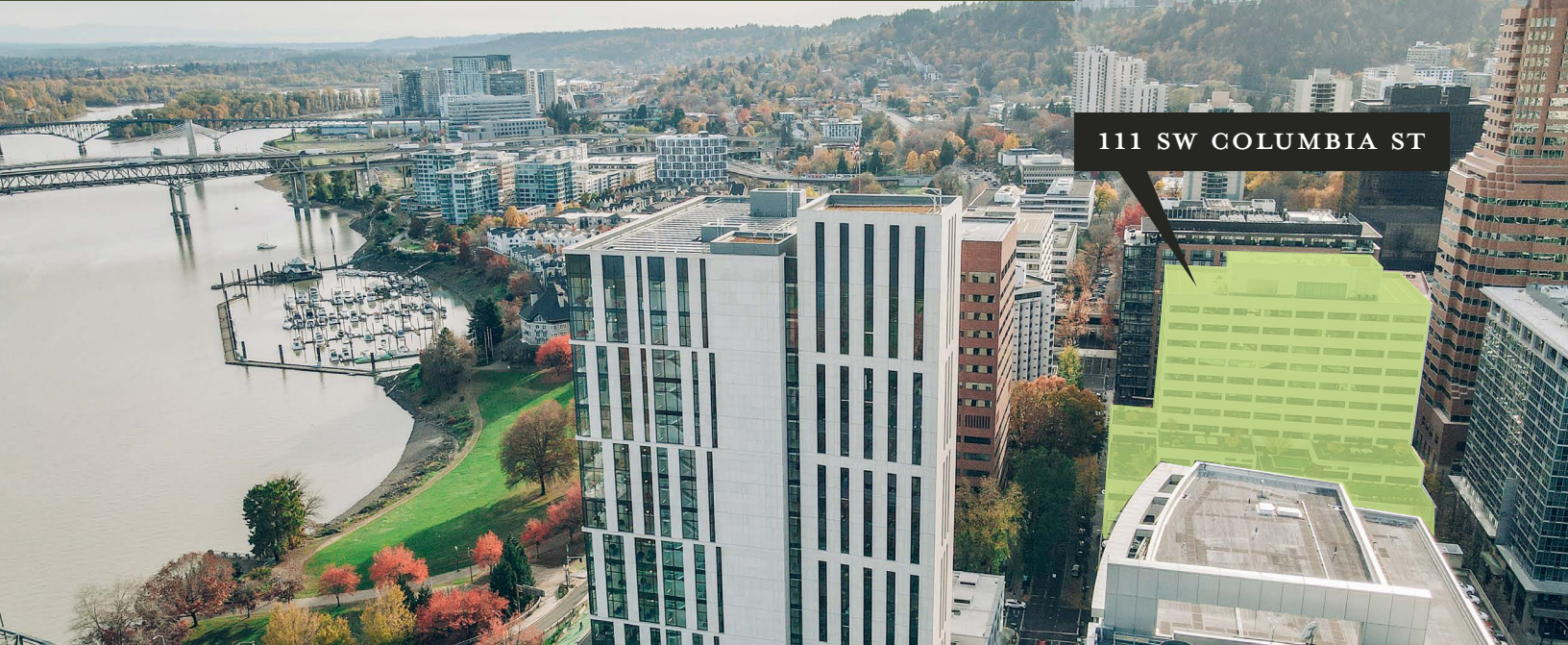


PARKING
AVAILABLE



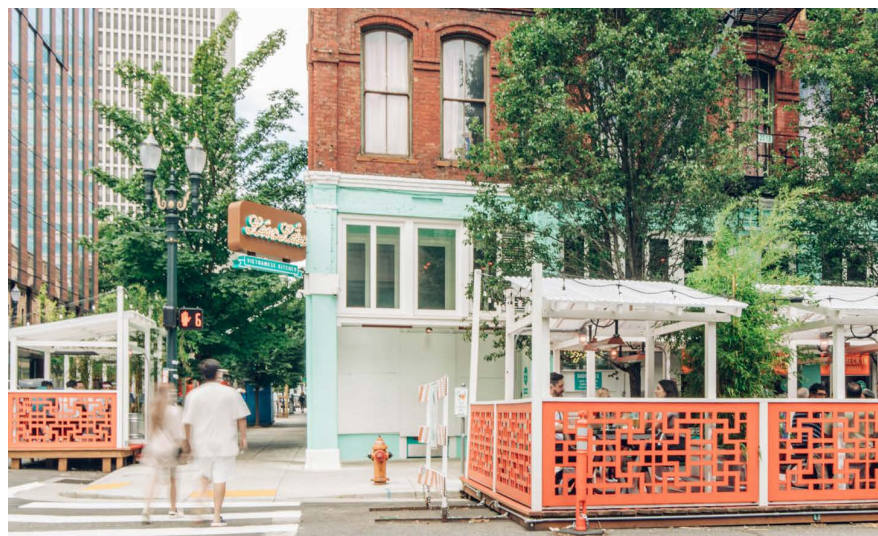


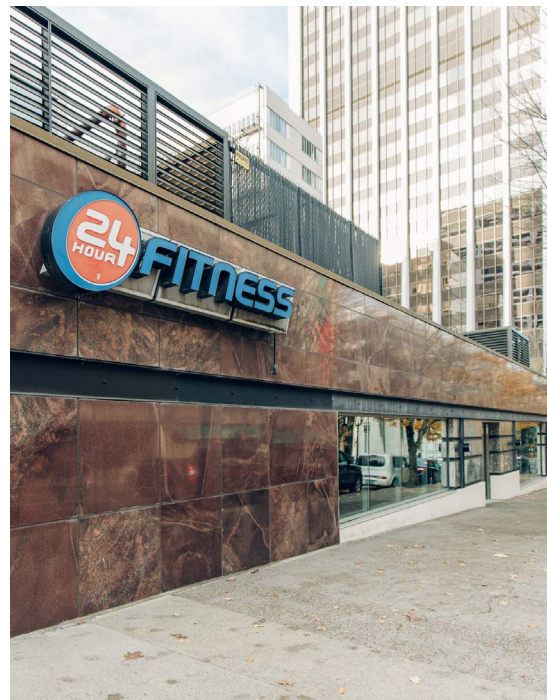
COLUMBIA SQUARE LOCATION



LOCATION HIGHLIGHTS

- Fountain District location
- Full complement of urban services and amenities within blocks
- Easy access to I-5 North/South, US 26, I-84, Hawthorne and Morrison Bridges
- Near fine dining, numerous cafes, and delis
- Located one block from Waterfront Park
- Close to Transit Mall, MAX light rail, bus routes, and Portland Streetcar lines
- Adjacent to the Porter Hotel, Astoria Portland Apartments and Multnomah County Courthouse





96

WALK SCORE

"Walker's Paradise"

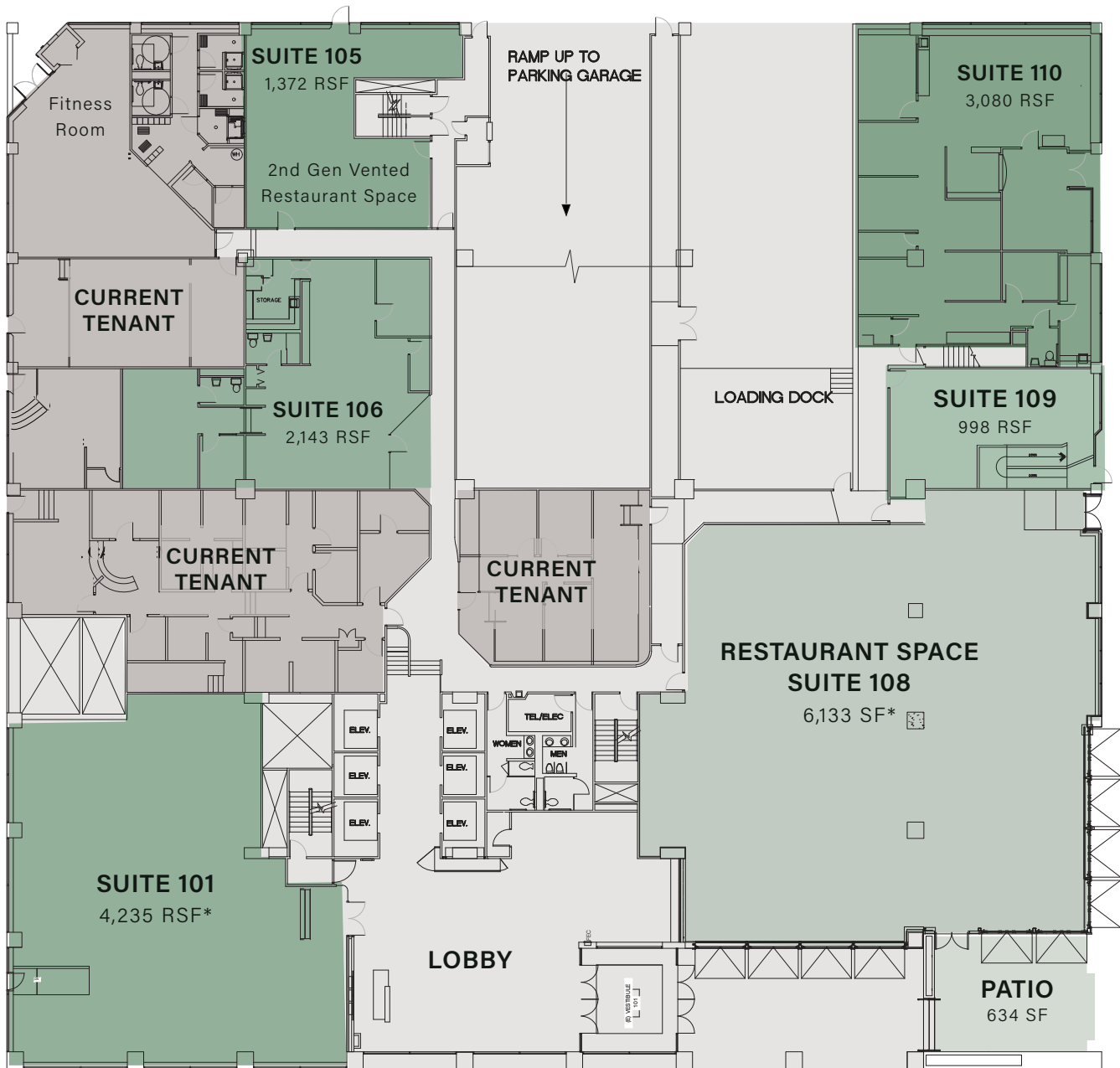


92

TRANSIT SCORE

"Rider's Paradise"





RETAIL SUITES 101 | 105 | 106 | 108 | 109 | 110

998-6,133 RSF (approx.)

Available Now

**Spaces that can be demised*

NICOLE ONDER

503.546.4540

nonder@melvinmark.com

Licensed in OR & WA

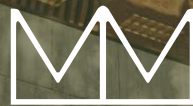
MICHAEL ECKER

503.546.4586

mecker@melvinmark.com

Licensed in OR





MELVIN MARK

EST. 1945

FOR LEASE COLUMBIA SQUARE RETAIL

111 SW Columbia Street | Portland, OR 97201

NICOLE ONDER

503.546.4540
nonder@melvinmark.com
Licensed in OR & WA

MICHAEL ECKER

503.546.4586
mecker@melvinmark.com
Licensed in OR

The information contained herein has been obtained from sources we deem reliable.
We do not, however guarantee its accuracy. All information should be independently verified prior to purchase or lease.