

# FOR SALE



**SALE PRICE : \$750,000**  
**ACRES : 151.72**

**151.7 ACRES IN PAHRUMP**  
8130 Homestead Road Pahrump, NV 89048



**Nancy Wong**  
Residential/Commercial  
BS.0144840  
702.348.8929  
[nancy.wong@cbvegas.com](mailto:nancy.wong@cbvegas.com)

**Brian Krueger**  
Senior Consultant  
BS.19256.LLC  
702.234.4373  
[brian.krueger@cbvegas.com](mailto:brian.krueger@cbvegas.com)

**John McClelland**  
Commercial Real Estate Advisor  
S.0169443  
702.505.6354  
[john.mcclelland@cbvegas.com](mailto:john.mcclelland@cbvegas.com)

# FOR SALE

**151.7 ACRES IN PAHRUMP**  
8130 Homestead Road Pahrump, NV 89048



## PROPERTY DESCRIPTION

At nearly 152 acres, this parcel offers an opportunity to achieve some scale in development or to speculate on future demand for housing in Nye County.

## PROPERTY HIGHLIGHTS

- Large parcel offering scale
- Great vantagepoints
- Large Las Vegas parcels are rare, driving future development to
- Pahrump Zoned: RH-4.5
- APN: 044-771-01

## OFFERING SUMMARY

Sale Price:	\$750,000
Lot Size:	151.72 Acres

DEMOGRAPHICS	1 MILE	5 MILES	20 MILES
Total Households	122	6,504	21,312
Total Population	299	15,158	49,742
Average HH Income	\$77,037	\$82,953	\$79,150

# 151.7 ACRES IN PAHRUMP

8130 Homestead Road Pahrump, NV 89048



NEVADA  
CALIFORNIA

Google

Map data ©2026 Google Imagery ©2026 Airbus, CNES / Airbus, Landsat / Copernicus, Maxar Technologies

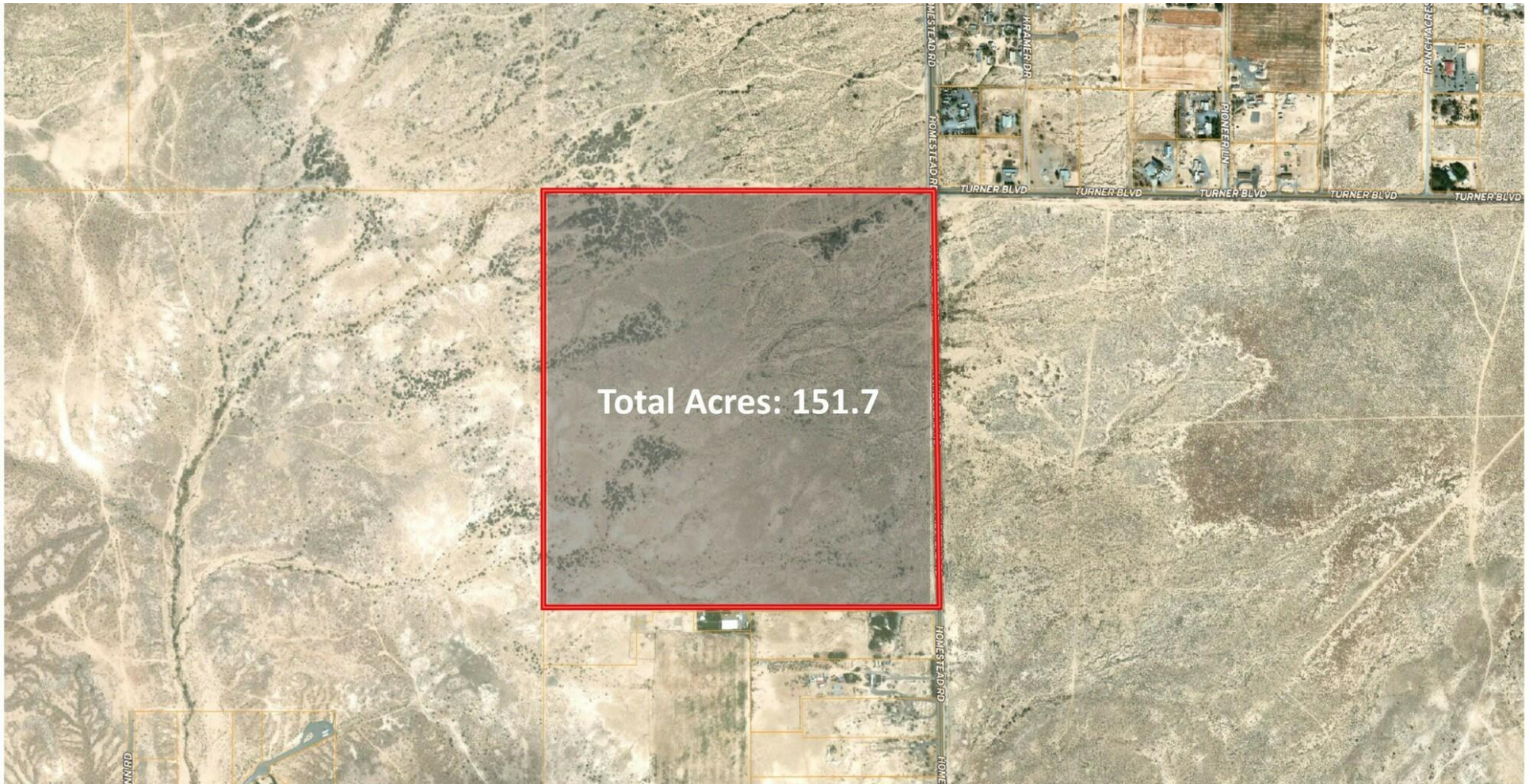
# 151.7 ACRES IN PAHRUMP

8130 Homestead Road Pahrump, NV 89048



# 151.7 ACRES IN PAHRUMP

8130 Homestead Road Pahrump, NV 89048



# 151.7 ACRES IN PAHRUMP

8130 Homestead Road Pahrump, NV 89048

## POPULATION

	1 MILE	5 MILES	20 MILES
Total Population	299	15,158	49,742
Average Age	48	51	51
Average Age (Male)	48	51	50
Average Age (Female)	48	51	51

## HOUSEHOLDS & INCOME

	1 MILE	5 MILES	20 MILES
Total Households	122	6,504	21,312
# of Persons per HH	2.5	2.3	2.3
Average HH Income	\$77,037	\$82,953	\$79,150
Average House Value	\$268,928	\$313,811	\$297,772

Demographics data derived from [AlphaMap](#)

