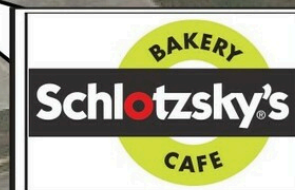




OFFERING MEMORANDUM

0 CORSICANA
CROSSING BLVD
CORSICANA, TX 75109

Discover the potential of this prime 1.1-acre tract, strategically located in Corsicana, right off Corsicana Crossing Blvd and directly across the street from the I-45 frontage road.



THE COMMERCIAL
PROFESSIONALS

ADAM OLSEN, CCIM

713-614-2670

ADAM@THECOMMERCIALPROFESSIONALS.COM

GABE RODARTE

713-614-2670

GABE@THECOMMERCIALPROFESSIONALS.COM

PROPERTY SUMMARY

0 Corsicana Crossing Blvd Corsicana, TX 75109

LEASE RATE: \$1,367.36 Acre/month

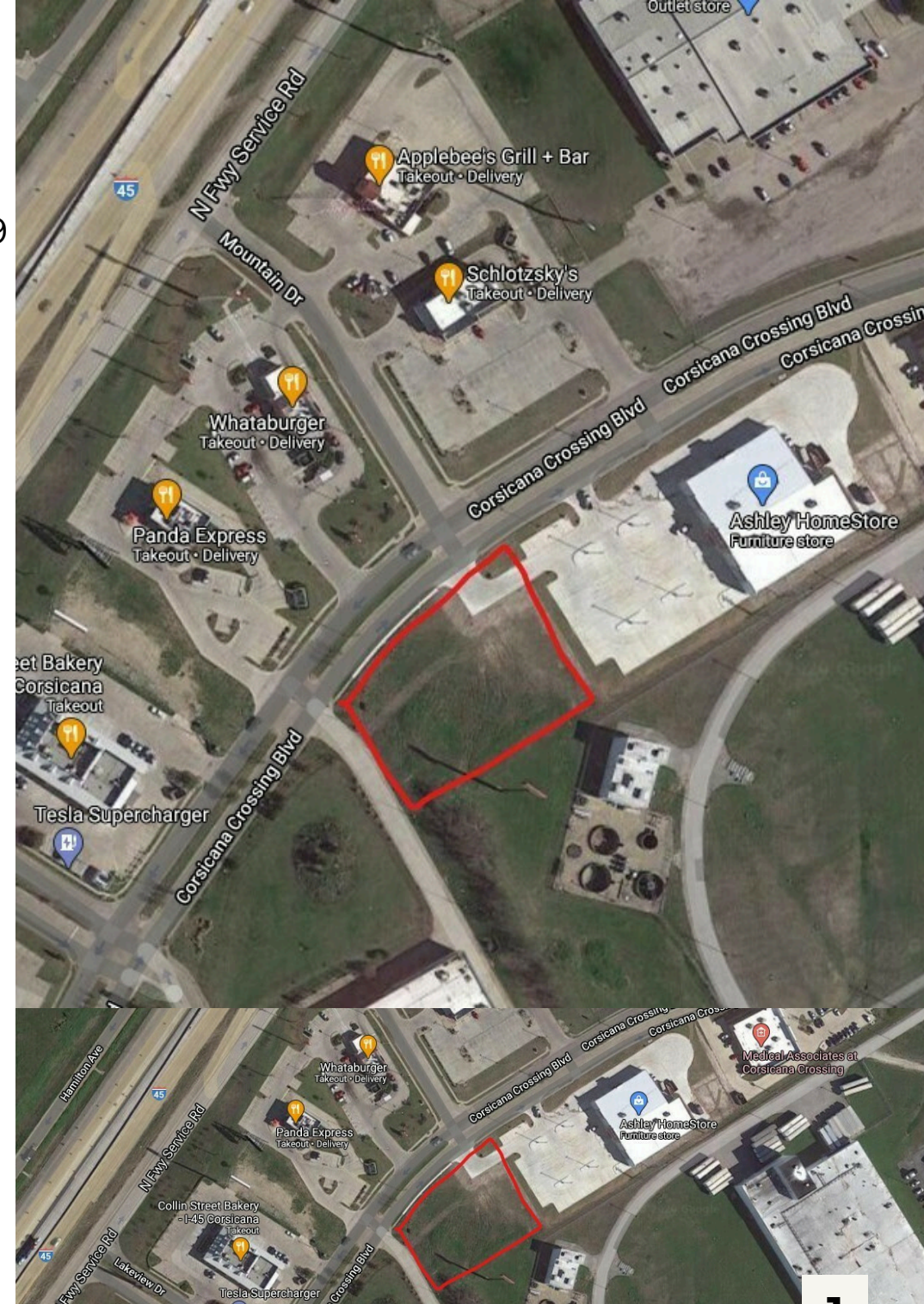
LEASE TERM: Negotiable

PROPERTY TYPE: Land

AVAILABLE SF: 1.09 Acres

LOT SIZE: 1.067 Acres

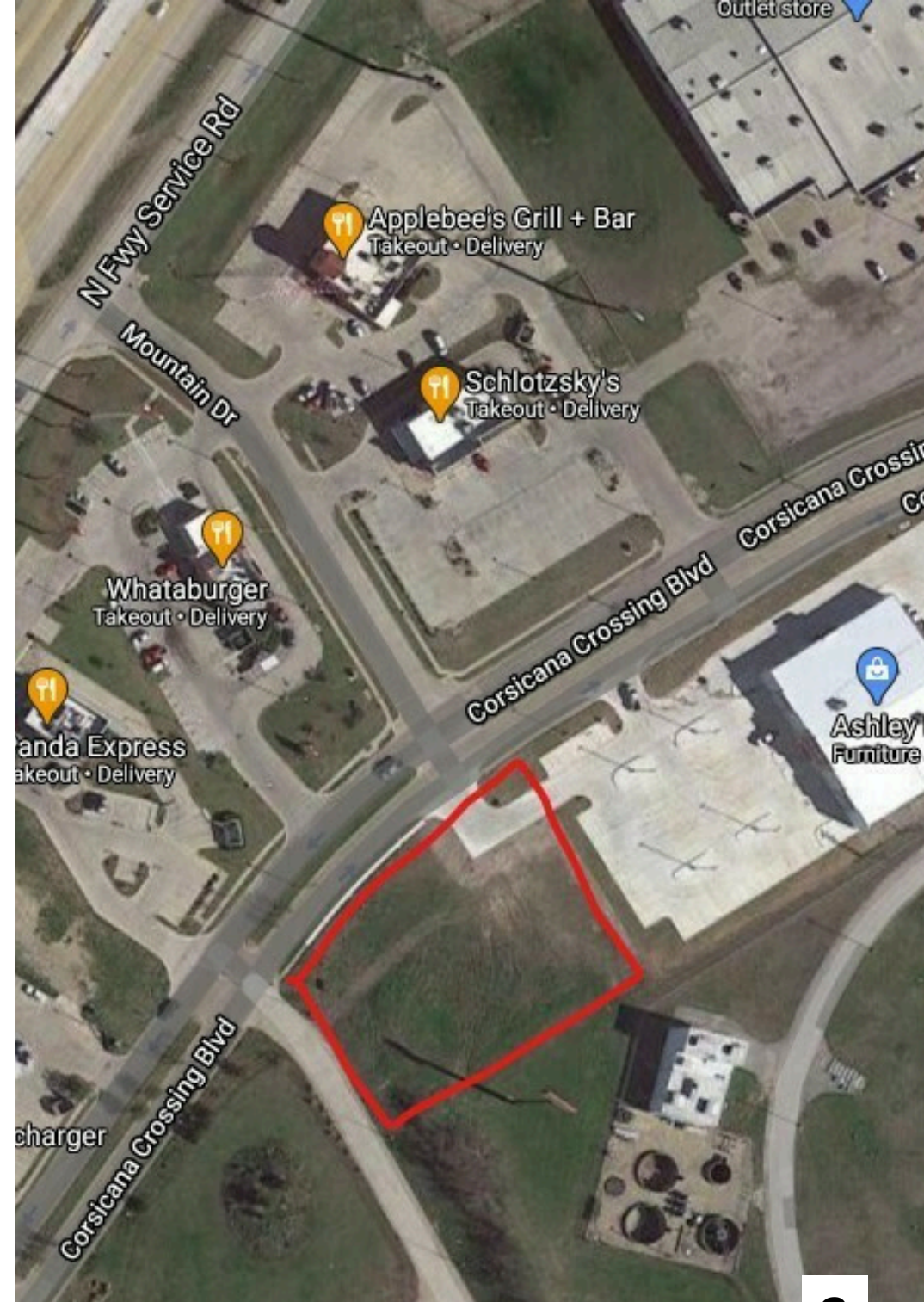
The tract's proximity to both local shoppers and interstate travelers makes it an exceptional location for businesses looking to establish a prominent presence in the Corsicana market. With its combination of accessibility, visibility, and a vibrant retail setting, this 1.1-acre lease offers a rare chance to join a thriving commercial community.



PROPERTY HIGHLIGHTS

Corsicana Crossing Land Lease

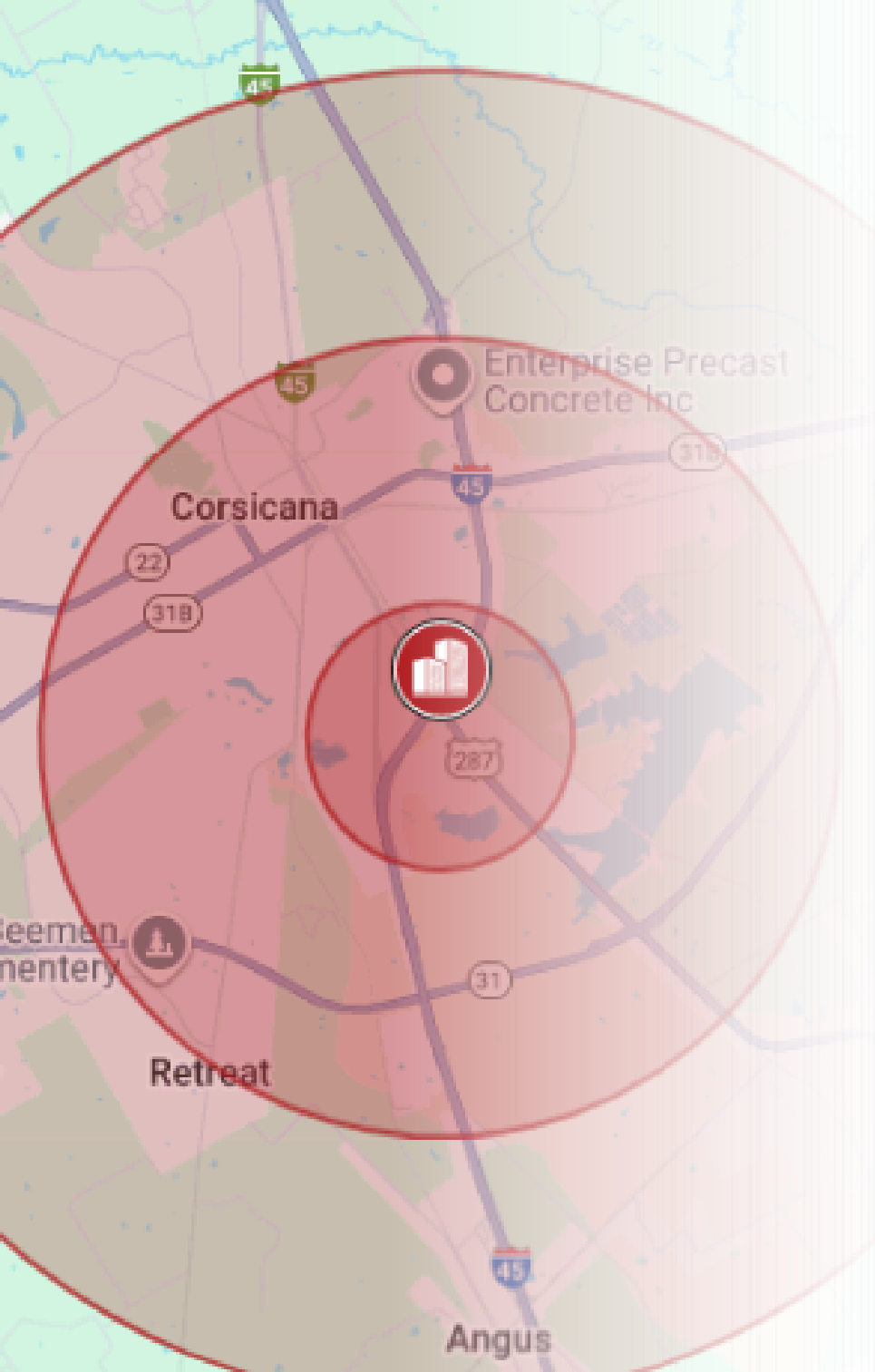
- 237 ft of frontage on Corsicana Crossing Blvd
- Superb location in the popular Corsicana Crossing retail shopping center
- Shares an access driveway with new Ashley Furniture store
- Only 500ft from the I-45 access road down Mountain Dr which is directly across from the property



AREA OVERVIEW

Discover the potential of this prime 1.1-acre tract, strategically located in Corsicana, right off Corsicana Crossing Blvd and directly across the street from the I-45 frontage road. This highly desirable piece of land offers unparalleled visibility and access, making it an outstanding opportunity for businesses seeking to capitalize on high traffic and excellent exposure.

	0.3 Miles	0.5 Miles	1 Miles
Total households	346	4,837	9,027
Total population	551	12,938	23,352
Persons per household	1.6	2.7	2.6
Average household income	\$37,524	\$47,711	\$54,368
Average house value	\$66,646	\$94,985	\$125,319
Average age	56.7	32.7	34.8
Average age male	57.2	30.7	32.7
Average age female	56.6	34.5	36.6



RETAILER MAP





THE COMMERCIAL PROFESSIONALS



ADAM OLSEN, CCIM

713-614-2670

ADAM@THECOMMERCIALPROFESSIONALS.COM

GABE RODARTE

713-614-2670

GABE@THECOMMERCIALPROFESSIONALS.COM

[ACCESS SECURE DOCUMENTS HERE](#)

[VIEW ADDITIONAL PROPERTY DETAILS HERE](#)

WWW.THECOMMERCIALPROFESSIONALS.COM

