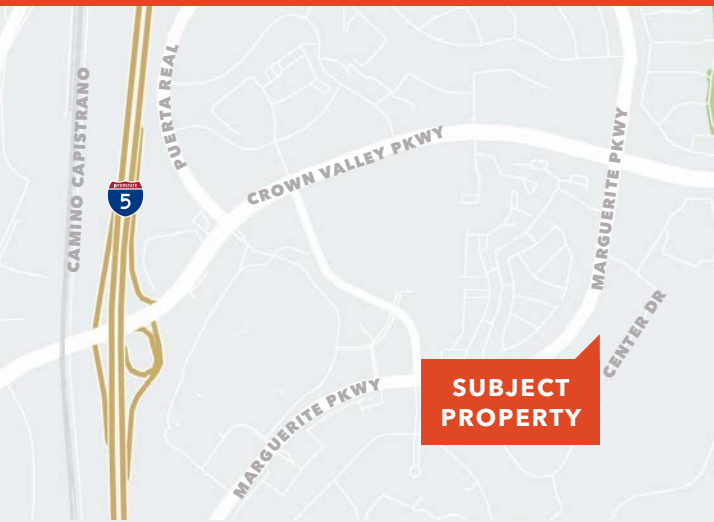




FOR LEASE

Center Dr Land in Mission Viejo

27820 CENTER DR
MISSION VIEJO, CA 92692



ERIC TSE
949.557.5018
eric.tse@kidder.com
LIC N° 01476614

**Kidder
Mathews**

This information supplied herein is from sources we deem reliable. It is provided without any representation, warranty, or guarantee, expressed or implied as to its accuracy. Prospective Buyer or Tenant should conduct an independent investigation and verification of all matters deemed to be material, including, but not limited to, statements of income and expenses. Consult your attorney, accountant, or other professional advisor.

KIDDER.COM

FOR LEASE

Center Dr Land

27820 CENTER DR, MISSION VIEJO, CA 92692

Property highlights

PARCEL SIZE ±80,586 SF

LEASABLE AREA
±40,000 SF (estimated)

APN 740-111-14 &
740-111-15

MARGUERITE PKWY at
Hillcrest/Center Dr

ZONING Business/Park
Industrial (BP)

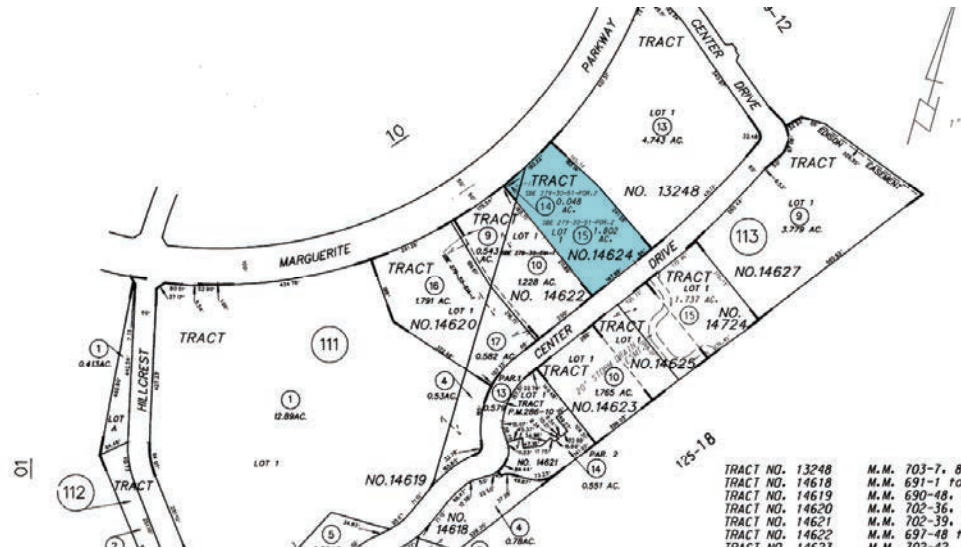
MULTIPLE commercial
possibilities

EXCELLENT freeway and
toll access

FLEXIBLE LEASE TERMS
including month to month
occupancy

PLEASE CONFIRM with the
City of Mission Viejo on use
suitability and approval

ERIC TSE
949.557.5018
eric.tse@kidder.com
LIC N° 01476614



KIDDER.COM

This information supplied herein is from sources we deem reliable. It is provided without any representation, warranty, or guarantee, expressed or implied as to its accuracy. Prospective Buyer or Tenant should conduct an independent investigation and verification of all matters deemed to be material, including, but not limited to, statements of income and expenses. Consult your attorney, accountant, or other professional advisor.

