

# AVAILABLE FOR LEASE

3853 TAYLOR ROAD | LOOMIS



## PROPERTY HIGHLIGHTS

- Flex Space in Downtown Loomis
- +/- 1,953 Total Square Feet
- Warehouse (1,338 SF) / Office (615 SF)
- 12' Clear Height in Warehouse
- \$1.25/SF Gross
- Located Behind StoneTree Plaza
- Common Area Restrooms
- Online Tour: [Click Here](#)

### COLE STROMBOM

650-302-3805

cole@strombom.com

LIC. #01953946

### OFFICE CONTACT

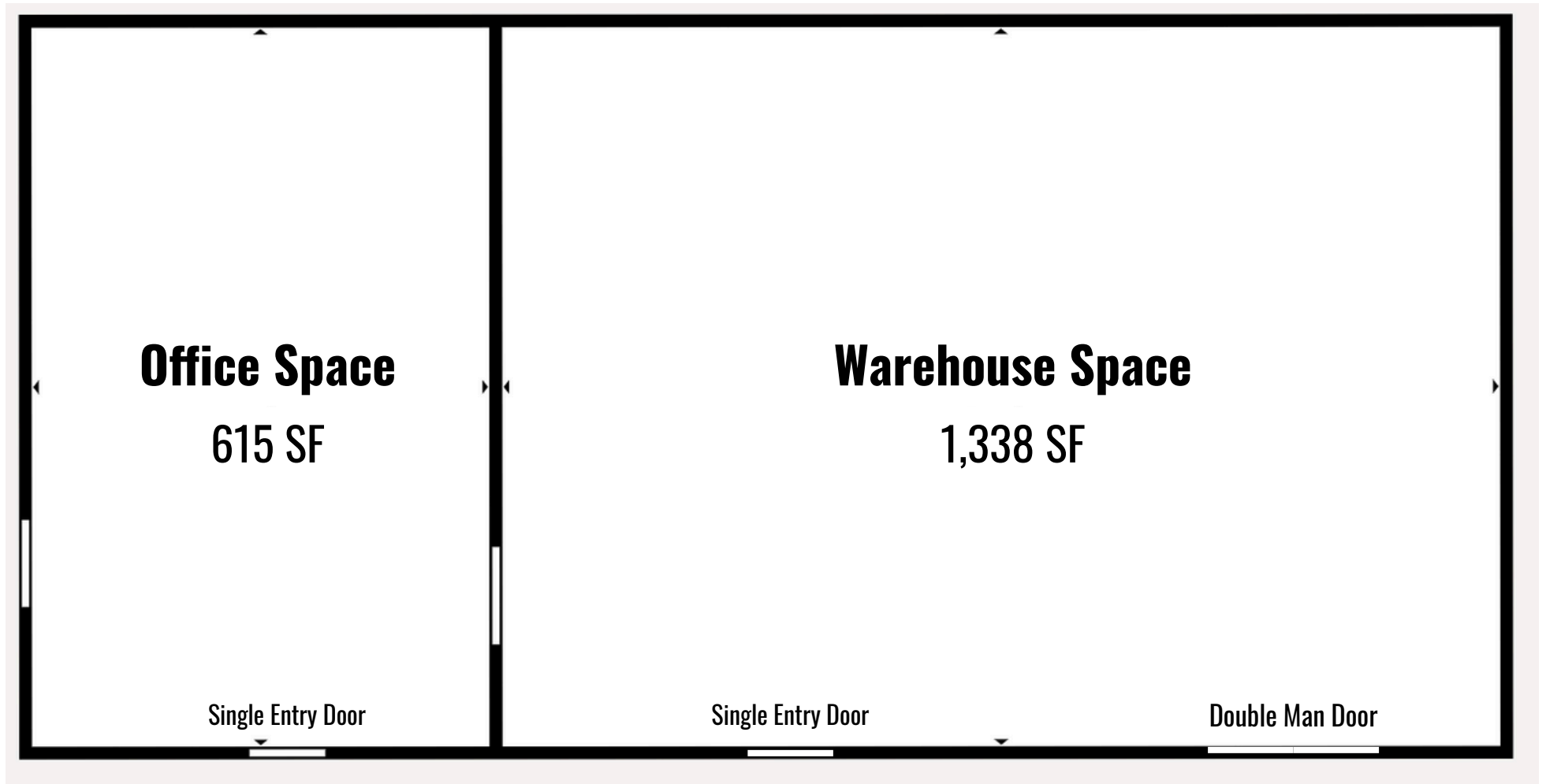
916-299-6698

www.strombom.com

LIC. #02155363



# FLOOR PLAN



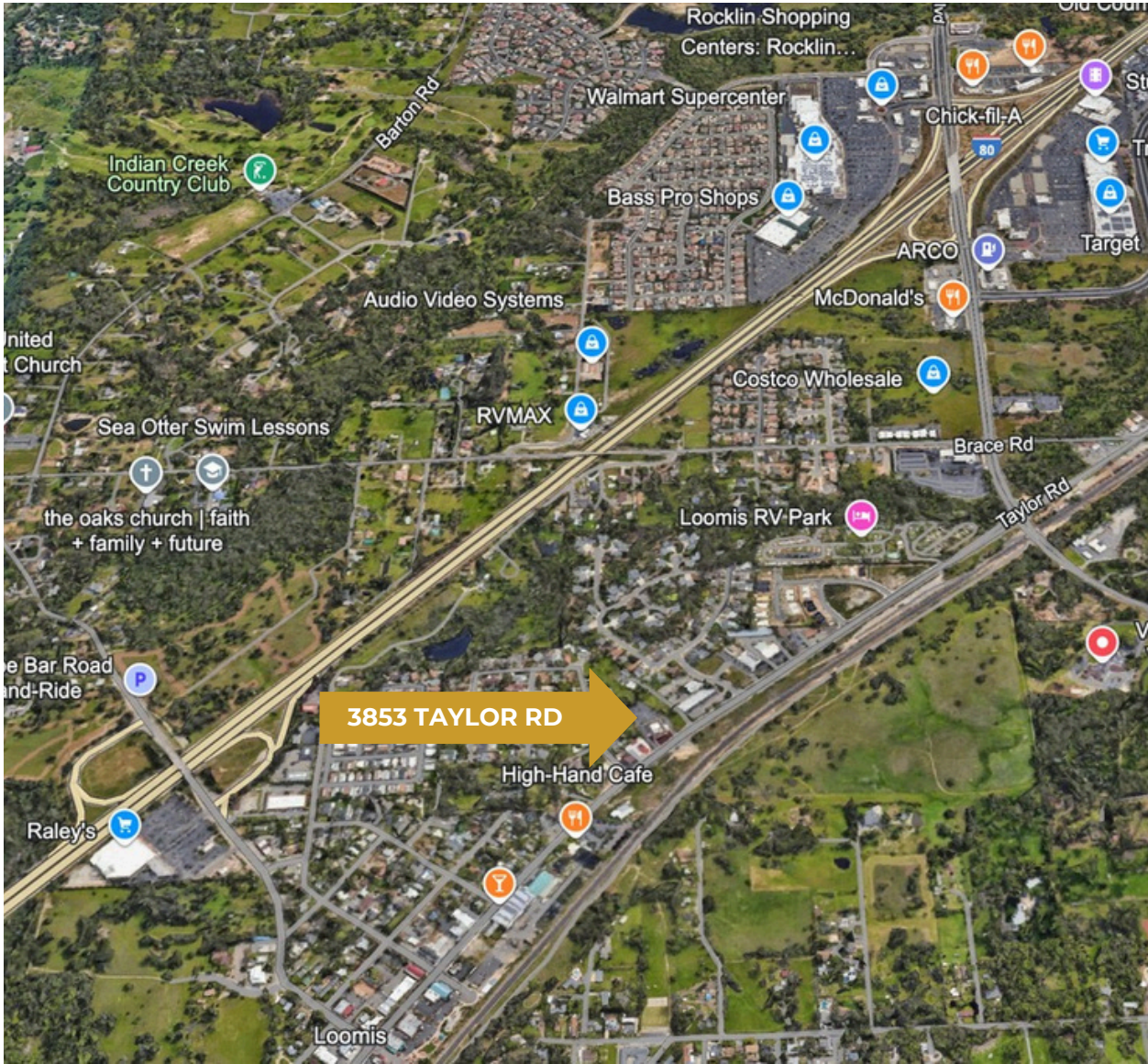
# SITE PLAN



# PICTURES

**\*Office to come with new carpet and paint\***





## NEARBY BUSINESSES

- Costco
- Target
- Trader Joe's
- Dutch Bros
- In-N-Out
- High Hand Cafe, Nursery, and Brewery
- Reds' Bistro
- LBB Gastro Pub
- Smithville & Co
- ACE Hardware
- US Post Office
- Wells Fargo
- US Bank
- Blue Goose Event Center
- Napa Auto Parts
- Valley Rock Landscape Material

### COLE STROMBOM

650-302-3805

cole@strombom.com

LIC. #01953946

### OFFICE CONTACT

916-299-6698

www.strombom.com

LIC. #02155363

