



For Sale

# Medical/Office Condominium

**Abigail K. Bachman**

Vice President  
+1 603 206 9644  
abby.bachman@colliers.com



210 Commerce Way, Suite 350  
Portsmouth, NH 03801  
+1 603 433 7100  
colliersnh.com

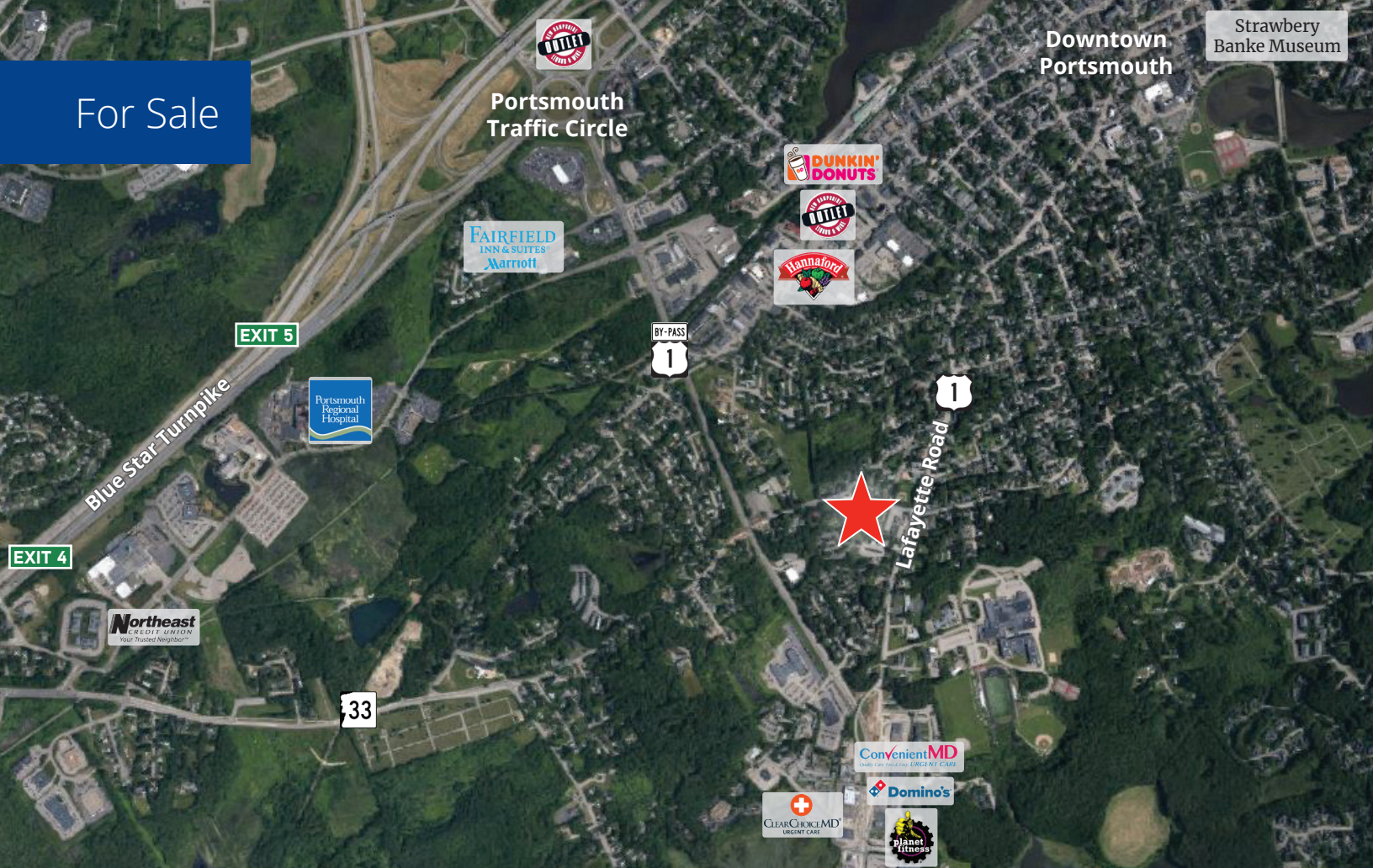
## 278 Lafayette Road Portsmouth, NH

### Property Highlights

- Well-maintained 1,275± SF first floor medical/office condominium available for sale in an established and professionally managed office park
- Ideally suited for medical, wellness, or professional office use
- Unit N-1-2 offers a functional and efficient layout featuring a reception area, 5 private offices, a kitchenette, 2 restrooms, and storage space
- Conveniently located with easy access to Route 1, I-95, and downtown Portsmouth, and near to Portsmouth Regional Hospital and many other medical and professional offices

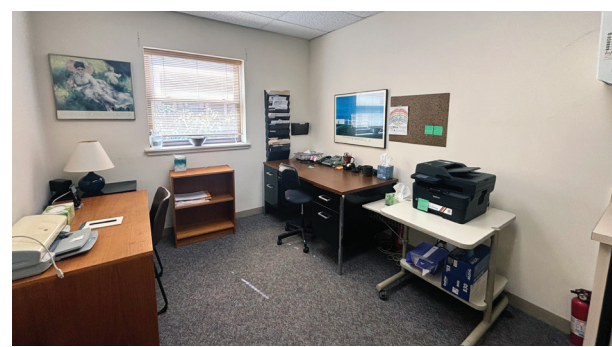
Information herein has been obtained from sources deemed reliable, however its accuracy cannot be guaranteed by Colliers International | New Hampshire & Maine. The user is required to conduct their own due diligence and verification. Colliers International | New Hampshire & Maine is independently owned and operated.

For Sale



## Specifications

Address:	278 Lafayette Road
Location:	Portsmouth, NH 03801
Building Type:	Medical/office condominium
Year Built:	1985
Condominium SF:	1,275±
Utilities:	Municipal water & sewer Natural gas
Zoning:	SRB
Parking:	Ample on-site
2026 Taxes:	\$2,405.59
Condominium Fees:	\$642.14
Accessibility:	Conveniently located with easy access to Route 1, I-95 & downtown Portsmouth
List Price:	\$300,000



210 Commerce Way, Suite 350, Portsmouth, NH 03801  
+1 603 433 7100 | colliersnh.com

# Floor Plan

