



Warehouse, Office Showroom, Flex Space

Avison Young is pleased to offer FOR LEASE 4,000 – 16,000 square feet of light industrial warehouse space, located in Ford Park of Commerce. Currently under construction, interior buildout may be tailored to tenant's needs. Building design is 80' x 200', with 4,000 square foot bays. Excellent opportunity located in close proximity to I-95.

Summary

Lot Acreage	2.76 Acres
Zoning	PUB FP-2
Parcel ID	046 070
Clearance/Eave Height	20'/18'
Parking	On-site
Floors/Stories	1

Get more information

Michael Bone

Senior Vice President
D 912 655 1507
michael.bone@avisonyoung.com

Industrial property for lease

80 Shelby Lane

Lease Information

Lease Type:	NNN
Total Space:	16,000 SF

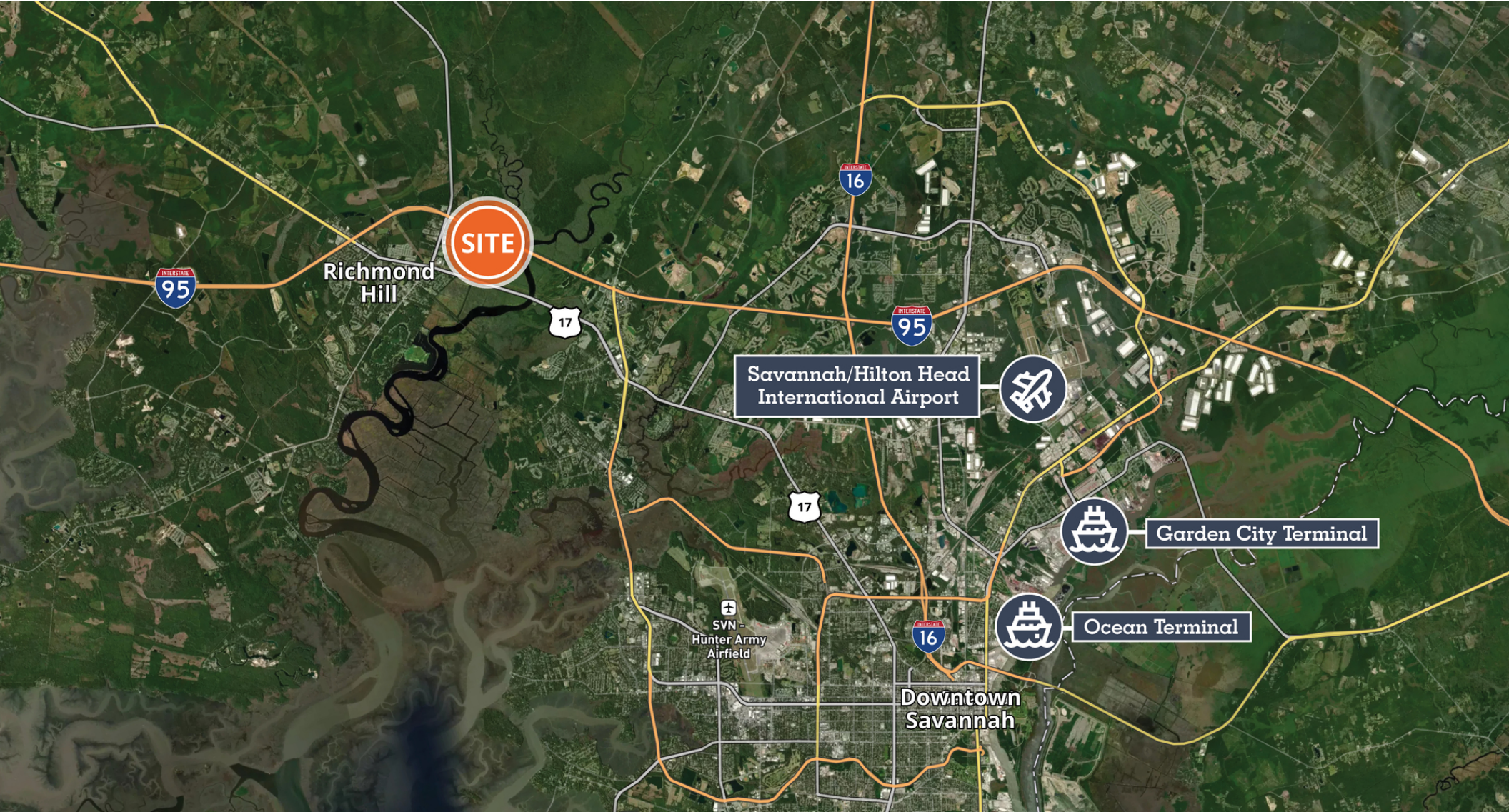
Lease Term:	Negotiable
Lease Rate:	Negotiable

Available Spaces

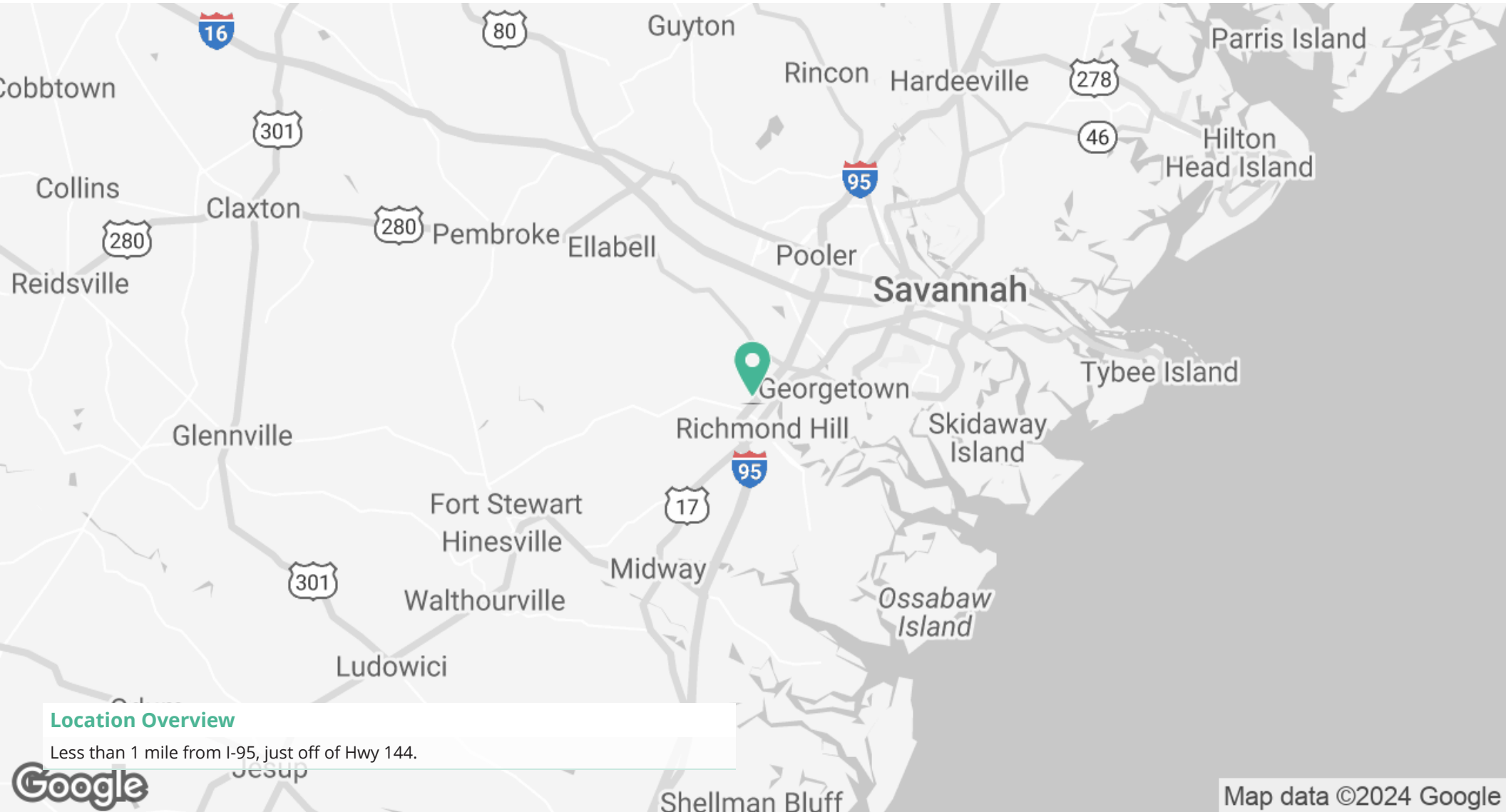
Suite	Date Available	Size (SF)	Lease Type	Drive-in Doors
Suite 101	Available	4,000 SF	NNN	1 Size 16'
Suite 102	Available	4,000 SF	NNN	1 Size 16'
Suite 103	Available	4,000 SF	NNN	1 Size 16'
Suite 104	Available	4,000 SF	NNN	1 Size 16'



Michael Bone
Senior Vice President
D 912 655 1507
michael.bone@avisonyoung.com



Michael Bone
Senior Vice President
D 912 655 1507
michael.bone@avisonyoung.com



Location Overview

Less than 1 mile from I-95, just off of Hwy 144.



Michael Bone
Senior Vice President
D 912 655 1507
michael.bone@avisonyoung.com