

FOR SALE > 1.47 ACRES OF LAND

BLUE VALLEY BUSINESS CENTER

16050-16068 METCALF AVENUE, OVERLAND PARK, KS



PEAK

Real Estate Partners

CONTACT US:



KIMBERLY TRANBARGER
 Vice President
 (913) 406-8875
 kimberly@peakrealestatepartners.com

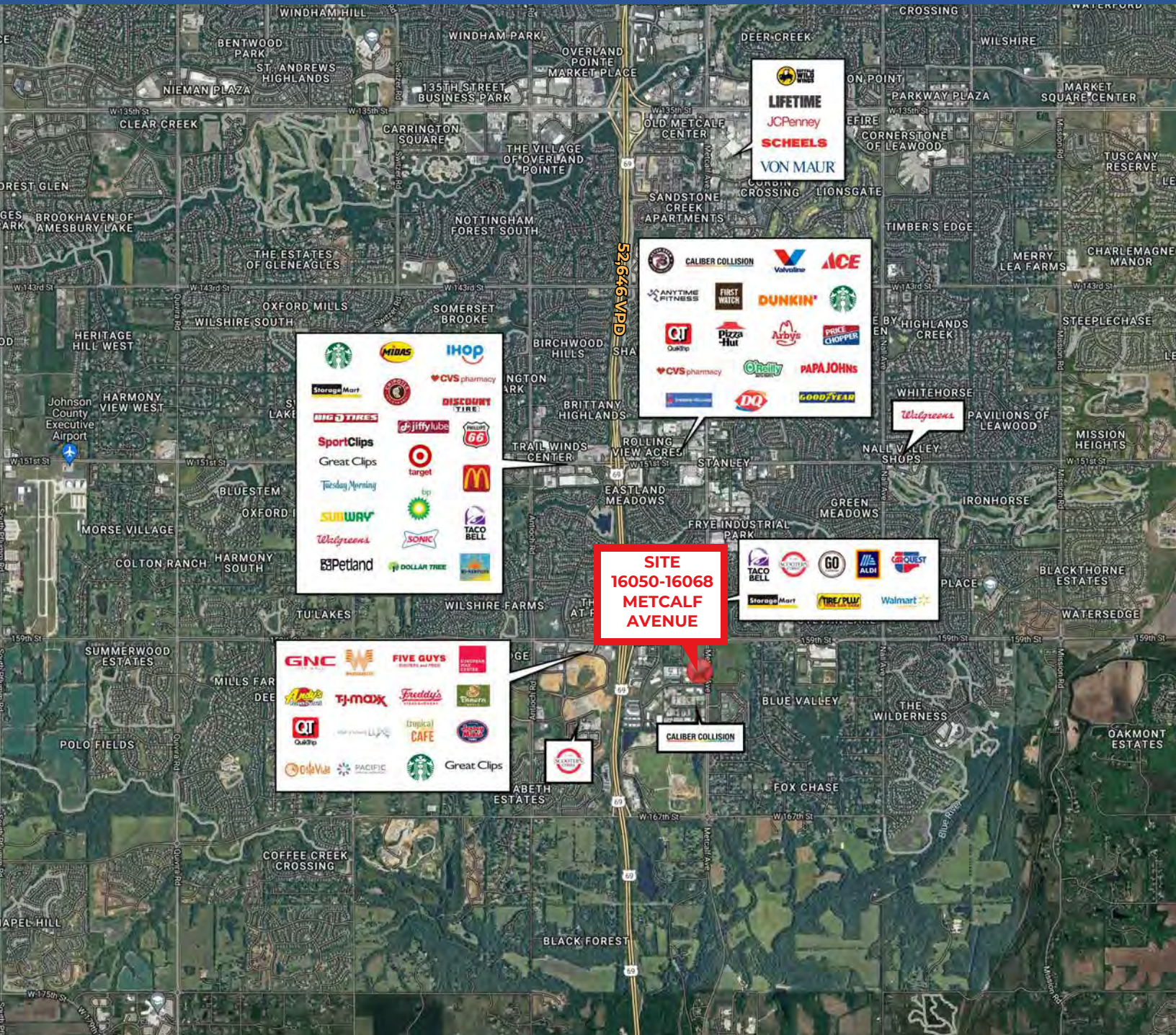
PROPERTY HIGHLIGHTS:

- 1.47 acres for sale (63,870 SF)
- Pad-ready
- Zoned: Commercial
- Excellent visibility and access to Metcalf Avenue
- Ideal for Retail or Office
- Utilities are to the site.
- High growth area near the new ALDI, Walmart, Price Chopper, AdventHealth South Overland Park, Quik Trip, and 270-unit Metcalf Village Apartments

AERIAL

16050-16068 METCALF AVENUE

PEAK
Real Estate Partners



TOTAL POPULATION

1-MILE	7,692
3-MILE	56,310
5-MILE	124,248



HOUSEHOLD INCOME (AVG)

1-MILE	\$150,196
3-MILE	\$213,688
5-MILE	\$204,429



MEDIAN AGE

1-MILE	40.3
3-MILE	38.8
5-MILE	40.3

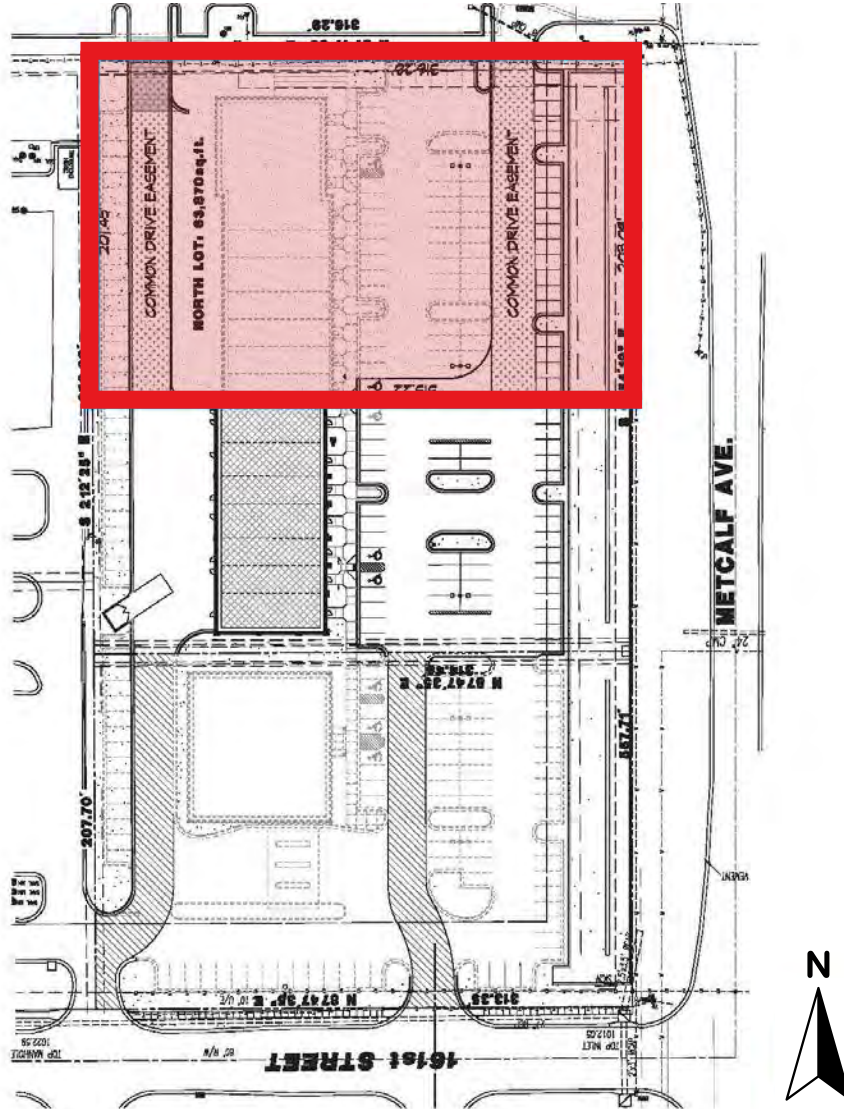


DAYTIME POPULATION

1-MILE	4,564
3-MILE	22,770
5-MILE	67,233

FLOOR PLAN

16050-16068 METCALF AVENUE



TOTAL POPULATION

1-MILE	7,692
3-MILE	56,310
5-MILE	124,248



HOUSEHOLD INCOME (AVG)

1-MILE	\$150,196
3-MILE	\$213,688
5-MILE	\$204,429



MEDIAN AGE

1-MILE	40.3
3-MILE	38.8
5-MILE	40.3



DAYTIME POPULATION

1-MILE	4,564
3-MILE	22,770
5-MILE	67,233