

**FOR LEASE**

**901 11<sup>th</sup> Street, NE**

Roanoke, Virginia

NE SON ROANOKE CORP.

**26,850 SF  
AVAILABLE**



**THALHIMER**

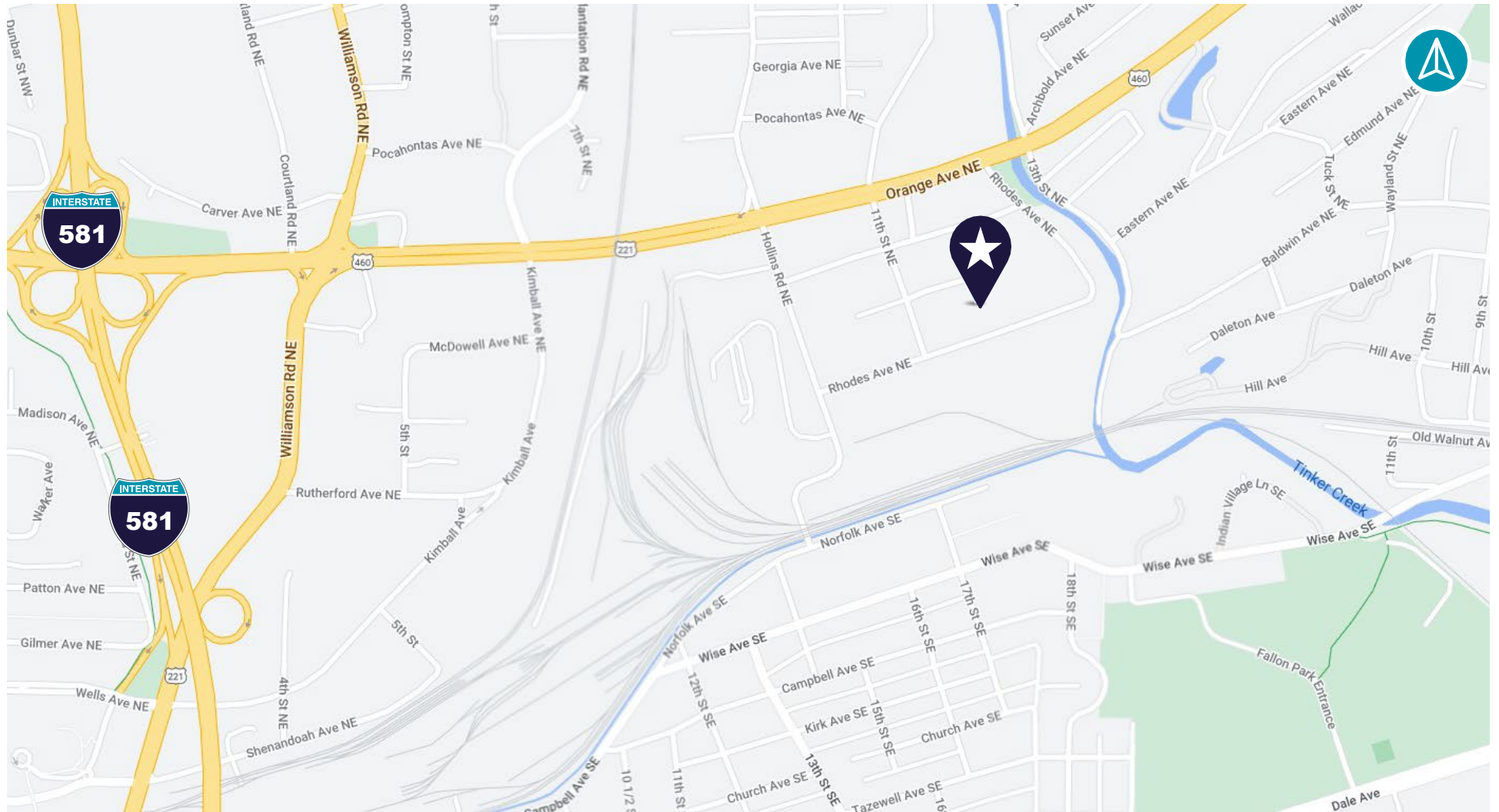
# PROPERTY FEATURES



<b>Property Type:</b>	Industrial
<b>Space Available:</b>	26,850 SF   Bay 2
<b>Lot Size:</b>	0.5 AC
<b>Zoning:</b>	I-1
<b>Loading Docks</b>	3
<b>Primary Use:</b>	Storage and Distribution
<b>Ceilings:</b>	High Ceilings
<b>Bathrooms:</b>	New Bathrooms
<b>Parking:</b>	10 Spaces
<b>Floor</b>	Concrete Flooring
<b>Lease Rate:</b>	\$3.60 PSF NNN

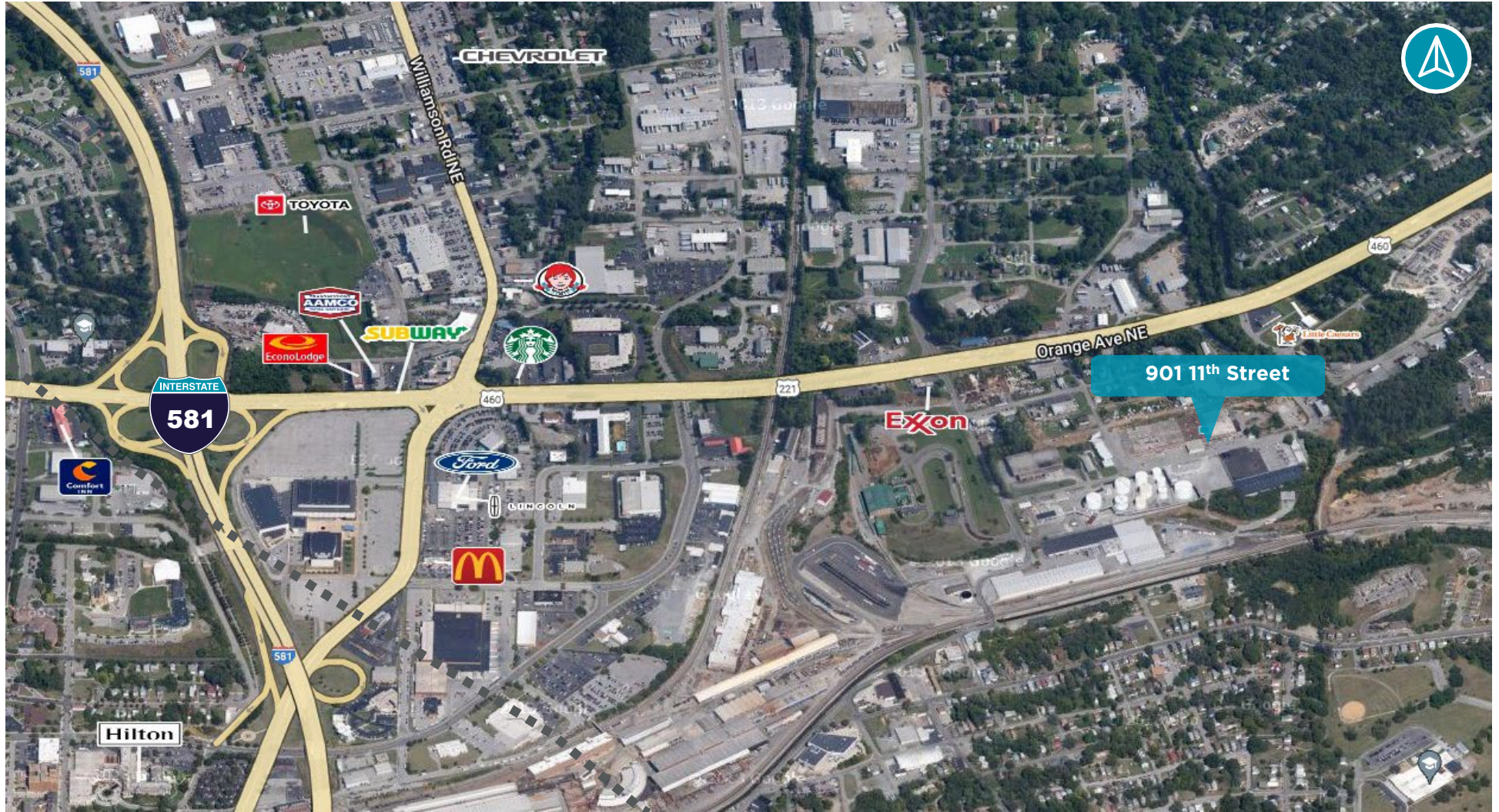
**STORAGE & DISTRIBUTION FOR LEASE | BAY 2**

# MAP



**901 11<sup>th</sup> Street, NE**  
**Roanoke, VA**

# AERIAL



901 11<sup>th</sup> Street, NE, Roanoke, VA



## CONTACT

BOYD JOHNSON  
Vice President  
540 767 3002  
[boyd.johnson@thalhimer.com](mailto:boyd.johnson@thalhimer.com)

Thalhimer  
310 First Street, Suite 300  
Roanoke, VA 24011  
[thalhimer.com](http://thalhimer.com)

A photograph of a single-story brick building with a sign that reads 'NE SON ROANOKE CORP.'. The building has several large windows and a red sign in front of the entrance. In the background, there are white storage tanks and a blue sky with white clouds. The foreground is a paved parking lot.

NE SON ROANOKE CORP.

Independently Owned and Operated / A Member of the Cushman & Wakefield Alliance

Cushman & Wakefield | Thalhimer © 2025. No warranty or representation, express or implied, is made to the accuracy or completeness of the information contained herein, and same is submitted subject to errors, omissions, change of price, rental or other conditions, withdrawal without notice, and to any special listing conditions imposed by the property owner(s). As applicable, we make no representation as to the condition of the property (or properties) in question.