

# FOR SALE

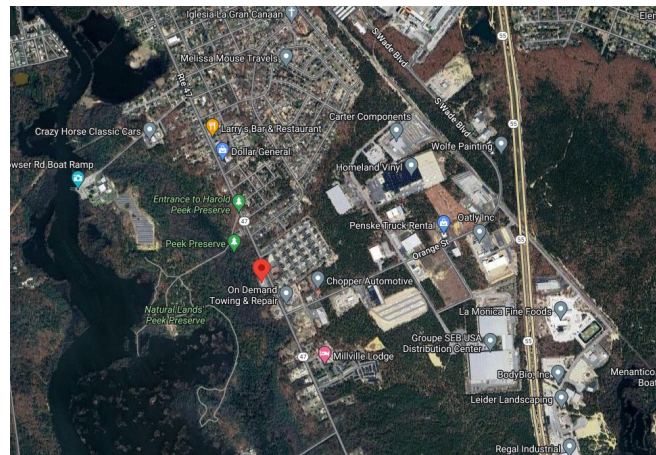


## 1900 S 2nd St, Millville, New Jersey 08332

*Building Size:* **5,400 ± SF**  
*Doors:* **(4) Grade**  
**(1) Dock**  
*Construction:* **Metal**  
*Land Area:* **1.61 ± Acres**  
*Year Built:* **1990**  
*Zoning :* **B-4**  
*2022 Taxes:* **\$12,950.06**

### *Additional Features:*

- **Freezer**
- **Fenced**



**John Mason**  
Sales Associate  
Mobile: (239) 919-2731  
John@mcnultygroupinc.com

Office Address:  
2315 Lynx Lane  
Suite # 6  
Orlando, Florida 32804  
www.mcnultygroupinc.com